

Incline Village General Improvement District Vol 10 Num 4

# IVGID Magazine

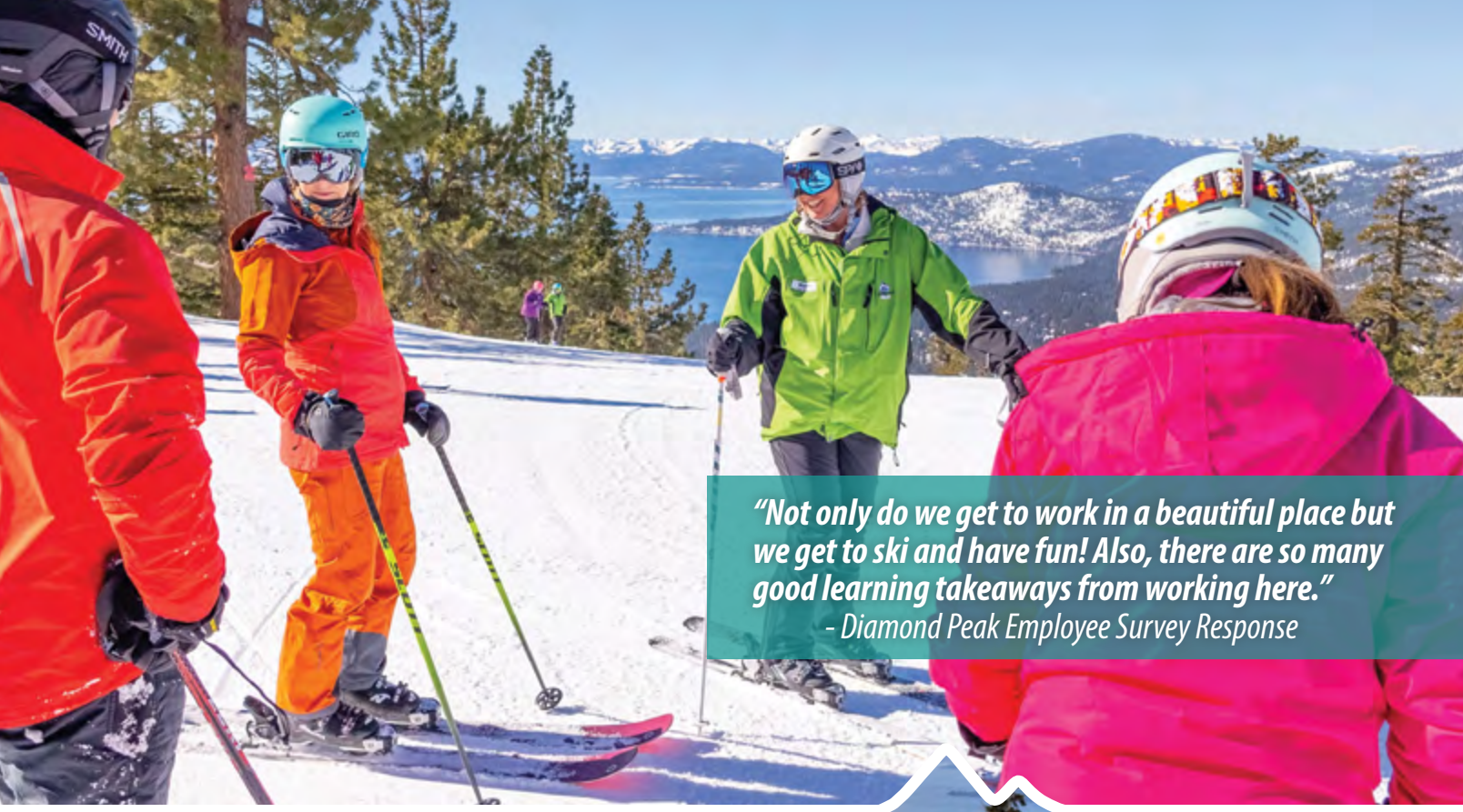
OCTOBER 2024 SPECIAL EDITION



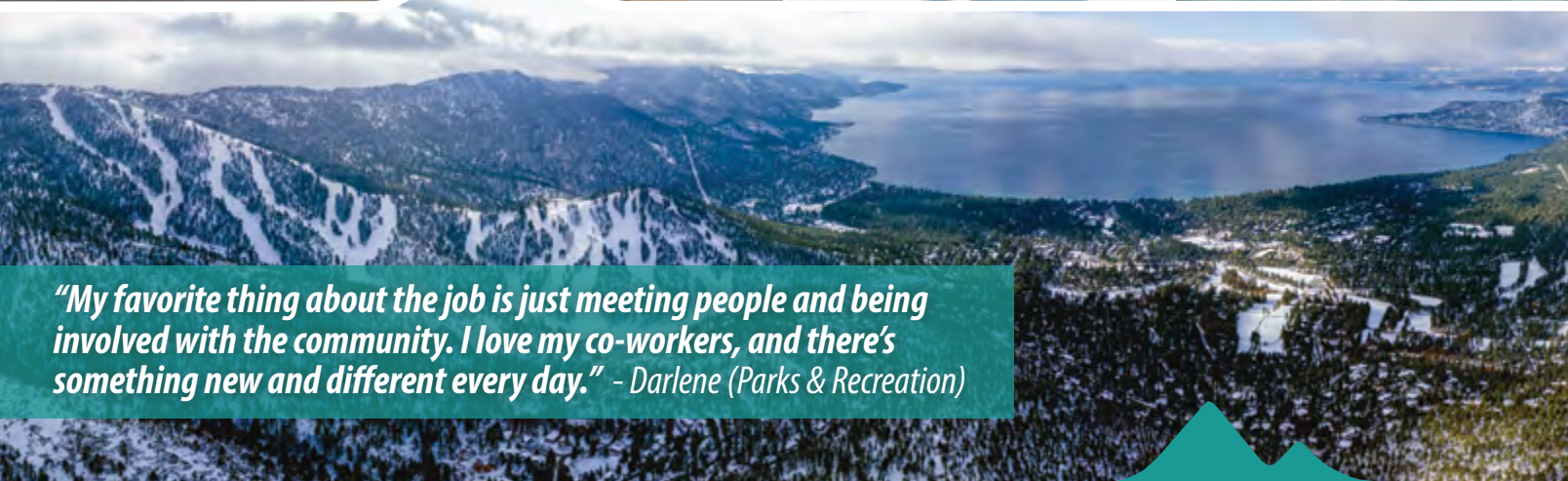
[www.yourtahoeplace.com](http://www.yourtahoeplace.com)







*“Not only do we get to work in a beautiful place but we get to ski and have fun! Also, there are so many good learning takeaways from working here.”  
- Diamond Peak Employee Survey Response*



*“My favorite thing about the job is just meeting people and being involved with the community. I love my co-workers, and there’s something new and different every day.” - Darlene (Parks & Recreation)*

**FULL-TIME, PART-TIME, SEASONAL AND ON CALL POSITIONS AVAILABLE**  
Create memories that will last a lifetime and make a positive contribution to our community by joining the IVGID team. View all open positions and apply online:

[YourTahoePlace.com/Jobs](http://YourTahoePlace.com/Jobs)





# WHAT'S INSIDE

- 05 Message from Karen Crocker, Interim GM
- 06 Effluent Export Pipeline Replacement Project update
- 14 Effluent Storage Tank Project update
- 16 Incline Skate Park Enhancement Project update
- 18 Incline Beach House Project update
- 20 Public Works Department Overview
- 22 IVGID Picture Passes and Punch Cards Overview
- 24 Parks & Recreation Counter Overview
- 26 District Website Resources
- 28 Rental Facilities of IVGID
- 30 IVGID Department Overviews
- 33 Incline Village Job Opportunities
- 34 IVGID Venues
- 36 IVGID's Board of Trustees
- 37 Incline Village/Crystal Bay Neighborhood Map
- 38 Heart of Incline Village Map

## IVGID FACILITIES & COMMUNITY INFO

Aspen Grove Community Center	960 Lakeshore Blvd.	775.832.1240
Burnt Cedar Beach	665 Lakeshore Blvd.	775.832.1232
Championship Golf Course	955 Fairway Blvd.	775.832.1146
Diamond Peak Ski Resort	1210 Ski Way	775.832.1177
Incline Beach	967 Lakeshore Blvd.	775.832.1233
Incline Elementary School	915 Northwood Blvd.	775.832.4250
Incline High School	499 Village Blvd.	775.832.4260
Incline Middle School	931 Southwood Blvd.	775.832.4220
Ridgeline Park Fields	939 Southwood Blvd.	775.832.1310
Incline Skate Park	Tahoe Blvd. & Southwood	775.832.1310
IVGID Administration	893 Southwood Blvd.	775.832.1100
Lake Tahoe School	995 Tahoe Blvd.	775.831.5828
Mountain Golf Course	690 Wilson Way	775.832.1150
Preston Field	700 Tahoe Blvd.	775.832.1310
Public Works	1220 Sweetwater Rd	775.832.1203
Recreation Center	980 Incline Way	775.832.1310
Sierra Nevada University	999 Tahoe Blvd.	775.831.1314
Ski Beach	967 Lakeshore Blvd.	775.832.1156
Tennis & Pickleball Center	964 Incline Way	775.832.1235
The Chateau at Incline Village™	955 Fairway Blvd.	775.832.1240
The Grille at the Chateau	955 Fairway Blvd.	775.832.1178
Village Green	960 Lakeshore Blvd.	775.832.1310

Volume 10, Number 4

### BOARD OF TRUSTEES

Chair  
Sara Schmitz  
schmitz\_trustee@ivgid.org

Vice Chair  
Matthew Dent  
dent\_trustee@ivgid.org

Treasurer  
Ray Tulloch  
tulloch\_trustee@ivgid.org

Secretary  
Michaela Tonking  
tonking\_trustee@ivgid.org

Trustee  
Dave Noble  
noble\_trustee@ivgid.org

### EDITORIAL STAFF

MANAGING EDITOR  
Kari Wingate

### CONTRIBUTORS

Paul Raymore  
Kate Nelson  
Hudson Klein  
Bree Waters  
Karen Crocker  
Chad Smith  
Mark Helleckson  
Sarah Vidra

### CONTACT US

893 Southwood Blvd.  
Incline Village, NV 89451  
775.832.1100  
info@ivgid.org

### PUBLISHING

Each Incline Village/Crystal Bay parcel owner receives one subscription to a domestic address.

### ADVERTISING SALES

CCMedia Publishing  
775.548.6562  
peggy@ccmpublishing.com  
www.cc.media

### COVER PHOTO

Michael Harrigan



Thank you for picking up a copy of our October edition of the IVGID Magazine. Regular readers of the magazine will likely notice that this iteration is slightly different than our standard editions, which focus more on what's happening at our IVGID recreation venues.

For this bonus fall edition of the magazine, we chose to focus our attention on some of the big picture projects, services and amenities that IVGID provides and/or is working on. We have a deep dive into the Effluent Export Pipeline Replacement and the Effluent Storage Tank Projects – two of the largest capital improvement projects this District has undertaken in its history.

We also wanted to include some of the basic information about IVGID Recreation Passes (aka Picture Passes) and Punch Cards here in print, as this is always a subject that can cause confusion in the community. The information included here details the current rules and regulations that pertain to recreation access and IVGID Passes, but keep in mind that

these policies could change if our elected Board of Trustees chooses to make updates. So, we recommend everyone in the community pay attention to the upcoming Board of Trustees Long-Range Calendar and look for chances to provide input on that update process going forward.

Read on and you'll also find articles with tips on finding information available on our District website, some background information about the various District departments and what they do, a list of different District-owned facilities that are available to rent for special events, and much more.

I would also like to take this opportunity to thank the IVGID Board of Trustees and each one of our staff members for their hard work and continuous dedication during challenging times while continuing to provide a high level of service to our residents and guests.

Lastly, thank you to the community for your overall support and commitment to making Incline Village and Crystal Bay such a fantastic place to live and recreate!

Sincerely,

*Karen Crocker*

Karen Crocker  
Interim IVGID General Manager

*Think pink...*

**Mammograms now available!**

Offering **Genius AI™ 3D Mammography™ Exams with Enhanced Detection Technology** — the most accurate technology available



**INCLINE VILLAGE  
COMMUNITY HOSPITAL**

**(530) 582-6510**  
**[inclinehospital.com](http://inclinehospital.com)**





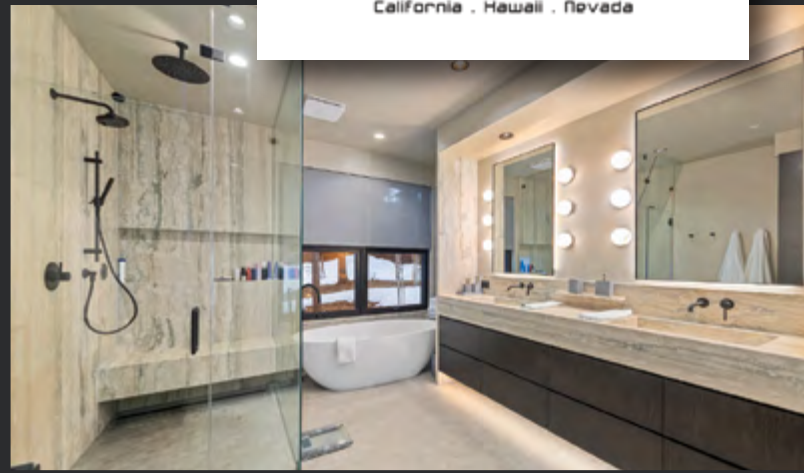
OUR TEAM COMBINES FINE INTERIOR DESIGN,  
SEAMLESS MANAGEMENT AND EXCEPTIONAL CRAFTSMANSHIP  
[GALLAGHERCONSTRUCTIONTAHOE.COM](http://GALLAGHERCONSTRUCTIONTAHOE.COM)

**GALLAGHER**



**CONSTRUCTION**

California · Hawaii · Nevada







## EFFLUENT EXPORT PIPELINE REPLACEMENT PROJECT UPDATE

One of the largest capital improvement projects in the history of IVGID, the Effluent Export Pipeline Replacement Project (CIP project # 2524SS1010) is a multi-year effort to replace the aging infrastructure that conveys the treated effluent from the District’s wastewater treatment plant out of the Lake Tahoe Basin, per federal requirements.

### Q: WHAT IS THE EFFLUENT EXPORT PIPELINE AND WHY DO WE NEED IT?

**A:** The Incline Village General Improvement District (IVGID) operates a wastewater collection, treatment, and effluent export system that serves the communities of Incline Village and Crystal Bay, Nevada, and the Nevada State Parks (Sand Harbor, Spooner and Memorial Point) located at Lake Tahoe.

The Wastewater Resource Recovery Facility (WRRF) – aka the sewage treatment plant – treats approximately 800,000 to 1.5 million gallons of wastewater each day. A critical component of this operation is the 20.5-mile effluent export pipeline, which protects Lake Tahoe’s water quality by exporting all wastewater effluent out of the Tahoe Basin.

To understand what the Effluent Export Pipeline is and why we need it, you need to know a bit about the history of Incline Village and Crystal Bay and the sewer system that serves it...

In 1961, the community of Incline Village was being developed by the Crystal Bay Development Company. In order to pay for improvements, The Incline Village General Improvement District (IVGID) was created by Washoe County on June 1, 1961, authorizing the newly created District to levy taxes to pay for improvements and for five elected Trustees to set up and run the District.

The District’s first job was to construct, maintain and operate the District’s sewer and potable water systems. In 1963 the District’s original wastewater treatment plant was completed and designed to handle wastewater originating from commercial and multi-family residential areas only. The original design of Incline Village was to permit each single-family residential lot to construct individual septic tank systems, therefore, capacity was not designed into the original plant for single family residential wastewater.

In 1969, Incline Village Inc. proposed to develop an additional 4,000 equivalent residential lots in Incline Village. The Incline Village General Improvement District commissioned an engineering study to determine the water and sewer system improvements to serve all of the present and planned development within the District. During the development by Incline Village Inc., the water and sewer system improvements were constructed according to the original plan to serve the developable lots.

A regulation that was passed in the late 1960s necessitated the construction of the effluent export system to pump treated effluent out of the Tahoe Basin. This was necessary because of a state and federal mandate that the use of septic tanks in the Tahoe Basin be discontinued, and that all treated effluent be exported out of the Basin.

By 1971, the District had complied with the federal mandate and the treated effluent was exported via pipeline to a ranch in Douglas County during the irrigation season and to the Carson River during the non-irrigation season.

New regulations on the disposal of wastewater required IVGID to either upgrade its treatment facility in order to continue disposing of the treated effluent in the Carson River or to have a year-round land-based disposal system. In 1983 IVGID completed the purchase of 900 acres in Douglas County to be used for development of a disposal site for its treated effluent. Construction of the effluent disposal facility was completed in 1984 with local and federal funding, and this is where the treated effluent is exported to this day – creating a wetland area in the Carson Valley that serves as wildlife habitat and open space.





The actual Effluent Export Pipeline is, at its most basic, just that – a big pipe in the ground that treated effluent flows through. The effluent flows by gravity from the east end of Incline Village to the Spooner Pump Station near Sand Harbor State Park. From there, the effluent is pumped over Spooner Summit on State Route 50, and then southeast down to the IVGID wetlands facility in the Carson Valley.

But as you can imagine, the design and engineering that go into that pipeline are complex given all the distance it must traverse, the nature of that terrain and environmental sensitivity of that zone.

**Q: WHAT HAPPENS TO THE TREATED EFFLUENT AFTER IT'S PUMPED OUT OF THE TAHOE BASIN?**

**A:** The treated effluent is ultimately released into IVGID's 900-acre effluent disposal facility – a man-made wetland located in Minden, Nevada.

This artificial wetland serves as a wildlife refuge and is also home to IVGID's Wetlands Waterfowl Hunting Program, which offers IVGID residents the opportunity to hunt on the property. The program follows the Nevada Department of Wildlife (NDOW) regulations for the hunting of waterfowl, and is operated through the IVGID Utility Department in conjunction with the IVGID Parks &

Recreation Department. You can find further information on the hunting program by searching for "wetlands hunting" on the District website.

**Q: WHY DOES THE EFFLUENT EXPORT PIPELINE NEED TO BE REPLACED?**

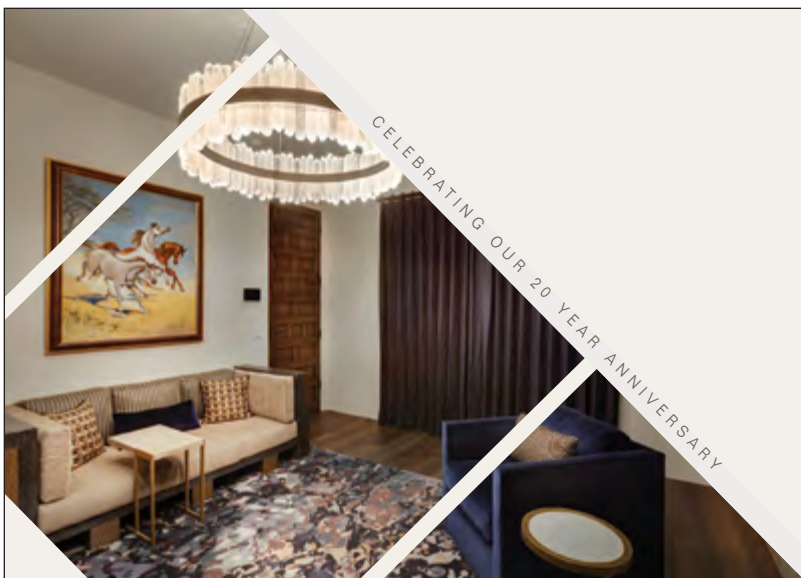
**A:** The original export line pipe, now over 50 years old, has reached the end of its useful life and ongoing corrosion has resulted in pipeline failures at multiple locations in recent years.

Early phases of the pipeline replacement project investigated the entire pipeline and prioritized the replacement schedule to maintain this critical infrastructure. This project represents an extraordinary infrastructure investment for a small utility district. This challenge is also unique to the Lake Tahoe Basin in that the pipeline replacement helps ensure the protection of a national environmental resource.

**Q: HOW LONG WILL THE PROJECT TAKE? WHAT ARE THE PHASES OF THE PROJECT?**

**A:** The project is scheduled to be finished by the end of the 2026 construction season.

*Continued on page 8*



**Professional Interior Design**

Aspen Leaf Interiors is a full-service design firm renowned for a unique approach that blends timeless elegance with modern sensibilities. We embrace each client's uniqueness to sculpt spaces with personalized sophistication and dedicated creativity. Our contemporary designs echo the beauty of natural surroundings and our passion for art, creating spaces that are not just visually appealing but also inviting.

www.AspenLeafInteriors.com  
 RESIDENTIAL + COMMERCIAL  
 design@alifirm.com | 530.338.1088  
 CID#6680 NCIDQ#38238







Within the Tahoe Basin, this pipe is divided into three “segments” underneath State Route 28:

- Segment 1 is the low-pressure supply pipe from the WRRF to a pump station near Sand Harbor.
- Segment 2 is welded-steel high-pressure discharge pipe exiting the pump station.
- Segment 3 is the remaining lower-pressure jointed-steel transmission pipeline within the Tahoe Basin running south to Spooner Summit.

Phase 1 of the Effluent Export Pipeline Replacement project began in 2003 and wrapped up in 2013. Phase 1 work replaced all four miles of Segment 1 pipe within Nevada Department of Transportation (NDOT) right-of-way, as well as two miles of Segment 3 pipeline that crossed through State Park lands at Spooner Lake. Phase 1 also included upgrades to the Spooner Pumping Station and converted two State Parks wastewater plants into raw wastewater pumping stations with installation of a new force main pipeline to deliver that sewage to the District’s WRRF plant for processing.

Phase 2 of the project – which we are currently in – will result in the replacement of the remaining six miles of aging pipeline within the Lake Tahoe Basin during the 2023, 2024, 2025 and 2026 summer construction seasons.

Phase 2 will replace all the remaining Segment 3 pipeline (approx. 13,700 linear feet) and all of Segment 2 pipeline (approx. 17,300 linear feet). Phase 2 work will be completed along State Route 28 using open-cut construction methodology to relocate the pipeline within the center of the southbound travel lane, or into the northbound travel lane, where required.

The short Tahoe Regional Planning Agency (TRPA)-mandated grading/earthwork season (Spring - Fall) dictates that IVGID’s Phase 2 pipeline work be completed as a multi-year project of approximately four years total.

Construction on Phase 2A was completed in 2023 with the installation of approximately 5,400 linear feet of pipe in both Segment 2 (3,300 linear feet) and Segment 3 (2,100 linear feet).

This summer’s construction on Phase 2B began with daytime-only work on April 22 to establish traffic management, survey control, and asphalt saw cutting for the trench. Limited excavation and pipeline installation started on May 1, with 24-hour construction beginning on May 5, with lane closures and construction underway continuously until Fridays at 12 p.m. This season’s construction will wrap up by November 1.

Phases 2C and 2D are currently scheduled to take place during the 2025 and 2026 construction seasons. See the project phasing chart on page 12 for more details.

**GEMME GROUP**



LUXURY REAL ESTATE  
LAKE TAHOE

**LISTING AND SELLING THE FINEST PROPERTIES IN LAKE TAHOE**

*We welcome the opportunity to help you or someone you love.*



**DAVID GEMME**  
Global Real Estate Advisor  
530.277.8881  
david@gemmegroup.com  
CA DRE 01371048 | NV S.0179228

Sierra  
**Sotheby's**  
INTERNATIONAL REALTY



© 2024 Sotheby's International Realty® is an Equal Opportunity Company. Each Office Is Independently Owned And Operated.

*Continued on page 10*



# WAYNE BRADY

**SATURDAY  
NOVEMBER 30, 2024**

**GRAND BALLROOM | 6 PM**

---

**TO PURCHASE TICKETS VISIT  
[ATLANTISCASINO.COM/WAYNE](https://atlantiscasino.com/wayne)**

---

***Atlantis***  
CASINO RESORT SPA • RENO™

Must be 21. Management reserves all rights.



### Q: WHAT IMPACTS DOES THE PROJECT HAVE ON TRAFFIC AND ROAD CONSTRUCTION?

**A:** During each of the construction seasons, the project will cause lane closures on Nevada State Route 28 between Sand Harbor and the Douglas County line. The construction travel impacts plan to be similar in 2025 and 2026 - the two remaining years of the Phase 2 construction. Traffic delays of up to 30 minutes are expected along this stretch of SR 28 during the construction seasons.

“IVGID Public Works will once again be impacting State Route 28 travel between Incline Village and Highway 50 with the Effluent Export Pipeline Replacement Project,” said IVGID’s Public Works Director Kate Nelson. “This is an extremely important project for IVGID as it ensures compliance with TRPA, state and federal regulations. We understand the frustrations with travel impacts and appreciate the public’s patience again this construction season. Travel safe.”

### Q: WHO IS THE CONTRACTOR AND HOW WERE THEY SELECTED?

**A:** Granite Construction is the contractor for Phase 2 of the Effluent Export Pipeline Replacement Project, and they are working on the project in a collaborative process known as “Construction Manager At Risk” or CMAR.

### HISTORY OF THE CMAR PROCESS FOR THIS PROJECT:

On May 6, 2020, the IVGID Board of Trustees approved Request for Qualifications (RFQ) documents to hire a qualified professional consulting firm for project review of the District’s Effluent Export Pipeline Project. The District did not receive an acceptable



proposal through this process. It was then decided to pursue the option of using a Construction Manager At Risk (CMAR) for the project.

On January 28, 2021, the IVGID Board of Trustees approved a contract with Granite Construction to provide pre-construction services as CMAR for the Effluent Pipeline project. CMAR selection was based upon scoring and evaluation by IVGID Staff and a member of the Board.

CMAR is an approach whereby the Owner procures a construction firm early in the design and planning process, but separately from the design firm. The intent is that the CMAR will construct the project upon completion of pre-construction services.

The CMAR process allows the opportunity to engage the expertise of the CMAR firm and leverage any existing third-party relationships (such as NDOT) in the pre-construction phase. The design and planning phase allows the owner, construction and design teams to create a collaborative project environment before entering the construction phase that carries through the project duration. This allows the entire team to work through design revisions to alleviate potential construction conflicts with the intent to reduce project risks and costs.

It is through this effort that the CMAR works closely with the design team to ensure the Guaranteed Maximum Price (GMP) is fully aligned with the design intent. To achieve this alignment, the CMAR is responsible for thoroughly reviewing all construction documents including drawings and specifications, and for ensuring all scopes of work and materials are included in the project estimating process.

Throughout pre-construction services, the CMAR revises Opinions of Probable Construction Costs (OPCC) based on design and specification milestones (typically at 30%, 60% and 90% design). The next step for the CMAR is to establish the construction budget as a GMP. The GMP becomes part of the CMAR contract along with all other project documentation (plans, specifications, etc.).

Upon completion of the pre-construction services, the CMAR acts as the general contractor during the construction phase to select, schedule, and sequence subcontractors to complete the required construction work as included in the GMP. The GMP can include general allowances for elevated costs that do not qualify as change orders. The Owners can require approval of allowance cost spending, ensuring thorough accounting.





The method is known as construction manager “at risk” because the Owner and CMAR negotiate a guaranteed maximum price GMP during the design phase. The intent is for the construction manager to be responsible for any costs that exceed the GMP.

However, the owner is not completely protected from risk in the construction project. For example, if any of the contract documents have inconsistencies or are missing anything important, the Owner may find themselves liable for those extra costs. For this reason, it is typical for the Owner to carry a pre-determined level of contingency funds within the contract, which is solely managed by the Owner.

While CMAR can be a complex process and the specifics of the delivery method will vary by jurisdiction, it will yield time and cost efficiencies by obtaining CMAR input during the design phase and beginning aspects of a construction project before the full design is complete. This is currently being realized by the collaborative efforts between IVGID, Granite and NDOT.

**Q: HOW MUCH IS ALL OF THIS COSTING? AND HOW DOES IVGID PAY FOR IT ALL?**

**A:** The project is paid for through a combination of sources. The primary funding mechanism is the Nevada State Revolving Fund (SRF) Loan (a state program that provides low-interest loans for infrastructure improvements).

The total loan amount is \$52M with an initial portion reduced via a principal forgiveness in the amount of \$608,300.

These loan funds have been offset partially by United States Army Corps of Engineers (USACE) 595 Program funds whereby 75% of a portion of work is covered by USACE programs funds, provided that a 25% match is met by IVGID funds (via the SRF loan and utility rates). The total grant to



date is \$4.8M, with additional increments currently in the application phase within the USACE process.

Lastly, U.S. Environmental Protection Agency Grant Funds of \$1.6M have been provided and applied as well.

Public Works Staff are continuing to work with our federal partners, IVGID’s lobbyist, and our Senate and Congressional delegation to secure more funding for this critical project.

*Continued on page 12*



## We hope we never work with you

When disaster strikes, 911 Restoration will be by your side to prepare for what’s coming, and to restore your home when it’s done. We hope you never need us. But if you do, we’ll be there fast—with communication that’s as good as our restoration.





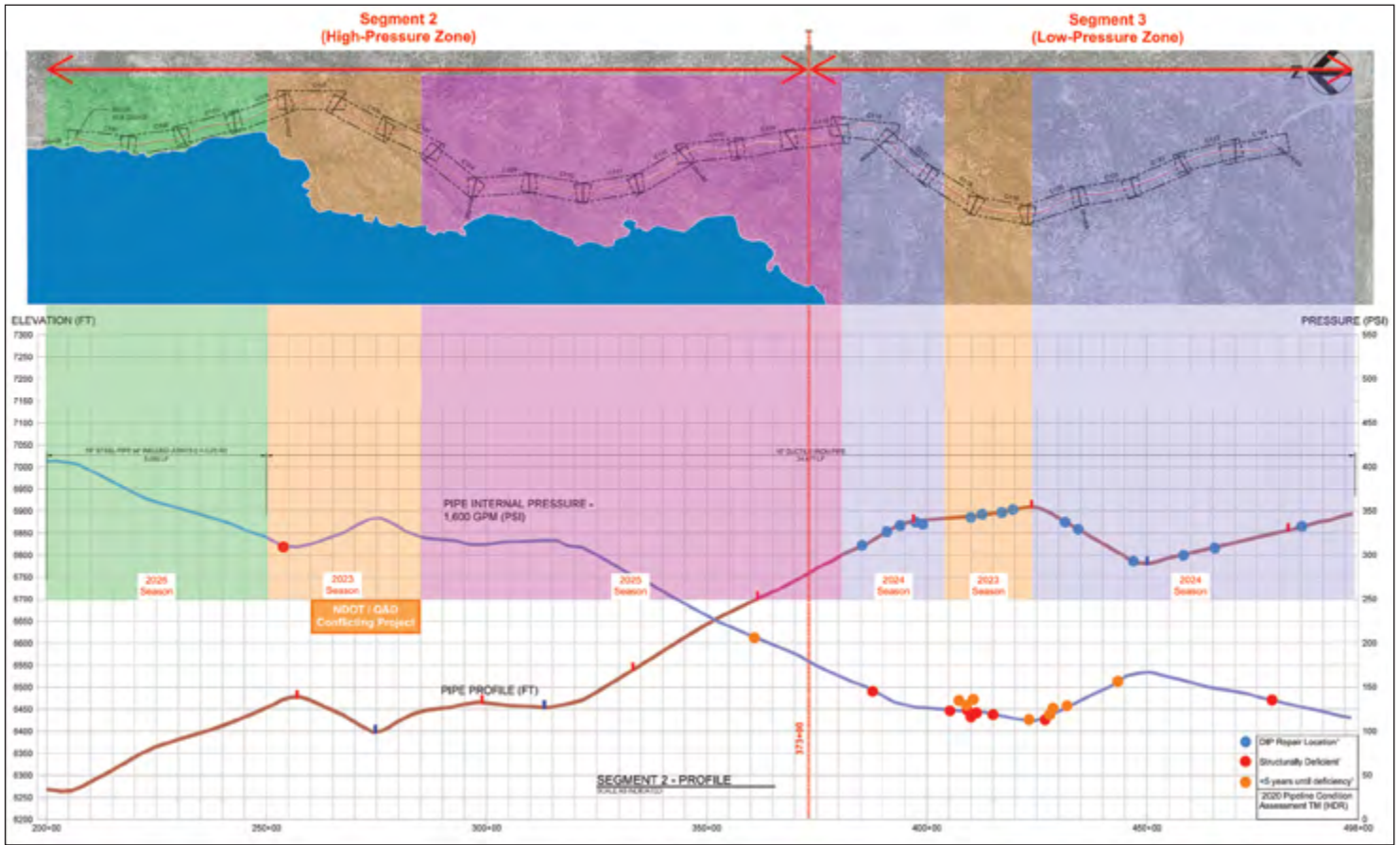
**888.243.6653**  
**911Restoration.com**

 WATER

 FIRE

 MOLD

**45 Minute Response Time**



**TRPA BEST IN BASIN AWARD**

IVGID's Effluent Export Pipeline Project has been selected as a 2024 Tahoe Regional Planning Agency "Best in Basin" award winner. IVGID and Granite Construction received this award on September 25, 2024, at the TRPA Governing Board meeting.

The Tahoe Regional Planning Agency's Jeff Cowan said, "Thank you for your work to protect and restore the Lake Tahoe Region!"

Lake Tahoe, Stateline, Nev. – The Tahoe Regional Planning Agency (TRPA) Governing Board today recognized nine projects and programs with Best in Basin awards for exceptional environmental design and stewardship of Lake Tahoe.

For more than 30 years, TRPA's Best in Basin award program has annually recognized projects that exhibit outstanding planning and execution and lead the way in regional collaboration and environmental stewardship. The award winners this year range from

forest health projects to citizen science monitoring.

"The Best in Basin award-winning projects provide outstanding environmental benefits for Lake Tahoe while also symbolizing what can be achieved when we work together to harmonize the human and natural environments," TRPA Executive Director Julie Regan said. "We applaud the hard work, innovation, and stewardship included in this year's winning projects."



# YOU, ONLY BETTER.

Multi-Specialty Orthopedics · Sports Medicine · Spine Services · Regenerative Medicine · Total Joint Care



Our team of orthopedic specialists work with you to get you back to what you love as quickly as possible.



**SKI &  
SNOWBOARD**  
OFFICIAL PARTNER



**Tahoe Orthopedics  
& Sports Medicine**

530.543.5554 | [bartonhealth.org](http://bartonhealth.org)

In partnership with Barton Health





## EFFLUENT STORAGE TANK PROJECT UPDATE

Another major capital improvement project the District is wrapping up as this magazine is going to press is the Effluent Storage Tank Project (CIP project # 2599SS2010), which provides for operational and emergency storage for up to 2 million gallons of treated effluent produced by the District’s sewage-treatment plant – otherwise known as the Wastewater Resource Recovery Facility (WRRF).

### Q: WHAT IS THE EFFLUENT STORAGE TANK AND WHY DO WE NEED IT?

**A:** Prior to construction of the new Effluent Storage Tank, the WRRF contained two unlined effluent storage ponds that were originally designed as the discharge point for the treated effluent from the WRRF. These ponds were used prior to enactment of federal regulations requiring all treated effluent be discharged outside of the Tahoe Basin, incorporated as part of the Porter-Cologne Act in the late 1960s. Since that time, the Mill Creek ponds remained to provide emergency effluent storage in the event where the capacity of the existing 500,000-gallon

effluent storage tank was exceeded – for example, if there was a leak in the Effluent Export Pipeline and pipeline operations needed to be shut down temporarily to fix the leak.

The WRRF operates under a discharge permit that is issued and monitored by the Nevada Department of Environmental Protection (NDEP). In order to best protect the Tahoe Basin environment, the recent and current NDEP discharge permits contain strict conditions that prevent the use of the emergency ponds unless they have been lined with an impermeable liner.

Initially, the IVGID Public Works Department investigated the cost and feasibility of lining the existing effluent storage ponds on the site to comply with NDEP standards; however, the Nevada Department of Water Resources (DWR) Dam Safety Department would not permit modifications to the existing Mill Creek dam(s) on the storage ponds without modernizing the entire dam to present-day construction standards, which would have drastically increased the cost associated with installing pond linings.

Once those requirements were determined, the Public Works

Department pivoted to building a new 2 million gallon freestanding Effluent Storage Tank next to the WRRF facility on the site of Mill Creek Pond 1. This new Effluent Storage Tank has enough storage capacity to handle an average day’s output of the WRRF without slowing or shutting down the facility.



Scan this QR code to see a video on this project.

### Q: WHAT DOES THE TANK LOOK LIKE?

**A:** Take a look at our Effluent Storage Tank Project video to see the tank site, get a sense of the scale of the project, and see a timelapse video of the tank being built. Scan the QR code above to view the video.

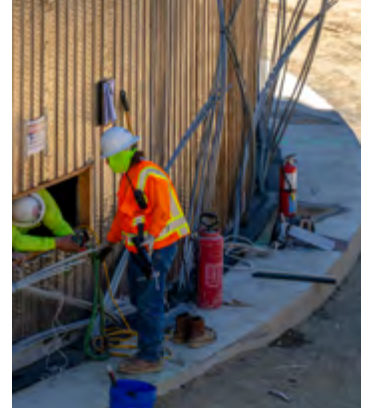
### Q: HOW LONG DID THE PROJECT TAKE?

**A:** The District began discussions about the Effluent Pond Lining Project in conjunction with the Effluent Export Pipeline Project back in July 2020 and pivoted to the current Effluent Storage Tank solution in 2022. Construction of the tank began in May 2024 with earthwork to remove the dam and construction of a new access road to facilitate tank construction.

While grading activities on site were underway, the lower Diamond Peak parking lot was utilized as a satellite yard to precast the reinforced concrete panels used to construct the tank walls and dome panels. These panels were then trucked to the tank site and erected in August 2024 with a series of on-site concrete pours to tie all the precast panels together.

As of press time, the Effluent Storage Tank is going through its final testing and certification process and is expected to





be operational and in service in late October 2024. However, the cool autumn temperatures are expected to delay final painting of the tank into the spring/summer of 2025.

**Q: WHO IS THE CONTRACTOR AND HOW WERE THEY SELECTED?**

**A:** Granite Construction is the contractor for the Effluent Storage Tank Project, and they are working on the project in a collaborative contract structure known as “Construction Manager At Risk” or CMAR contract. Find more information about the CMAR process in the article on the Effluent Export Pipeline Replacement Project in this magazine on page 10.



**ALL YOU NEED FOR LIFE IN THE MOUNTAINS**

Trust the experts at Mountain Hardware and Sports Incline Village, to have all you need, for any aspect of life in the mountains.







## INCLINE SKATE PARK ENHANCEMENT PROJECT UPDATE

### Q: WHAT IS THE INCLINE SKATE PARK ENHANCEMENT PROJECT?

**A:** In 2001 the community came together to build the Incline Skate Park. The primary purpose for the District to pursue the construction of the Incline Skate Park was to get local skateboarders off the streets, sidewalks, parking lots and other public and private spaces, where skateboarding is dangerous to skateboarders and the public. The skate park also provided positive opportunities for skaters to have fun and improve their skills in a safe environment.

### Q: WHY IS IVGID LOOKING TO ENHANCE THE SKATE PARK?

**A:** For over 20 years, the skate park has been a popular destination for skateboarders of all ages and skill levels; however, the current skate park no longer meets the needs of the skateboarders and the community.

The Incline Skate Park is undersized in relation to the surrounding area skate parks, and in addition, the existing park is limited, with very few beginner features and does not provide enough space or variety for skateboarders to practice and develop their skills.

The Incline Skate Park is one of the community's most used facilities, with summer camps in high demand that sell out days after opening.

The Community Services Master Plan (CSMP), updated in 2019, includes Top Tier and Second Tier Recommendations with the Skate Park Enhancement Project (CIP project # 4378BD2202) falling under the second tier of recommended projects.

The CSMP states, "The skate park has the potential to provide a better range of structures to meet both beginner and experienced user needs. The

current design is focused more towards experienced users, which reduces overall use. The skate park is adequate but is not designed for multiple age groups/ability levels. Incorporating a variety of elements for both beginners, young skaters and experienced skaters will enhance the facility. These enhancements have community support and could greatly increase the use of community resources."

Renovating and enhancing the skate park will benefit the community by providing a safe place for skateboards, which promotes physical activity and







a healthy lifestyle, especially for young people. By increasing and expanding the existing skate park, the enhancements will encourage beginners as well as more advanced skaters to use the park. The skate park is also open to the public, making it an affordable and accessible activity for all families in our community.

**Q: WHAT'S THE TIMELINE OF THE PROJECT?**

**A:** The Board Priority projects were discussed at the Jan. 12, 2022 Board Meeting and the Skate park Enhancement Project became a Board Priority Project. During the summer of 2022, staff applied for and received a grant from Washoe County for enhancement of the Incline Skate Park.

At the Dec. 14, 2022 Board Meeting, the Board moved to accept the Washoe County Notice of Subaward (Non-Competitive Grant) in the amount of \$250,000 for the purpose of enhancing the existing Skate Park.

During the May 25, 2023, Board Meeting (Item G.2), the Board approved a budgetary increase to the Skate Park Enhancement Project in an amount not to exceed \$500,000.

The Board directed staff to release a Request for Proposals (RFP) requesting Design-Build services for the 30% schematic design options for both a \$250,000 project (Design #1) and a \$500,000 project (Design #2). Once these schematic designs and estimates have been developed, the Board will determine which project will best meet the community's needs.

Two firms responded to the RFP and Spohn Ranch was awarded the 30% Design-Build contract. Staff is bringing the project back to the Board to ask for direction on the 100%

Design-Build. Staff has developed a construction schedule and intends to be finished with the construction in the fall of 2025.



**ORLANDO**  
 ENTERPRISES TAHOE, INC.  
**(775) 831-5567**  
**(530) 546-5567**  
 Building Quality Homes Since 1978  
 -Design Build-  
 -Competitive Pricing-  
 NV Lic # 0019856 - CA Lic # 876583  
[www.orlandoenterprises.com](http://www.orlandoenterprises.com)







## INCLINE BEACH HOUSE PROJECT UPDATE

The IVGID Board of Trustees, Staff and the community have been working toward enhancements to the existing snack bar, bar and bathroom structure at Incline Beach. At their January 12, 2022 meeting the IVGID Board identified the Incline Beach House Project as a Community Services Master Plan Priority project and a Top Tier Recommendation.

Staff brought the historical timeline of the project to the Board on July 27, 2022 and then again on February 8, 2023. At the February 8, 2023 Board meeting, the Board determined there

was a need for further community input and the community was surveyed using the FlashVote survey tool.

After FlashVote surveys were released and the results were made available, staff returned to the Board on July 26, 2023 to discuss these results and requested direction in order to release a Request for Qualification (RFQ). Staff also requested the Board clarify the delivery method to be used in this process, i.e. Design-Bid-Build, Construction Manager at Risk (CMAR) or Design-Build. The Board gave staff

direction to release an RFQ for the Project for a Design-Build team for the 30% schematic design.

The RFQ was a two-step process which was released on November 16, 2023, with a due date of December 19, 2023. Four Design-Build teams responded to the RFQ which were shortlisted by a selection committee to three final teams.

These three teams were given further technical documents and were asked to interview with the selection committee on February 1, 2024. The committee was made up of two members of the Board of Trustees, two members of the District's executive team, two members of the Public Works staff and one member of the Capital Investment Committee.

CORE Construction was chosen by committee as the Design-Build team and has completed the 30% design of the Incline Beach House and Incline Beach Access Projects. These two projects are planned to be combined for the 100% Design Phase and will be presented to the Board in its entirety at a future date.

Shop Local Small Businesses    Festive Food and Drinks    Give back to your Community!

**FRIDAY, DECEMBER 6<sup>TH</sup> AT 6:00 PM**

**LAKE TAHOE SCHOOL**  
Small School. Big Education.

SCAN FOR MORE INFO

995 Tahoe Boulevard, Incline Village, Nevada    775-831-5828    www.laketahoeschool.org



**Kelly Brothers**



20 YEARS OF PAINTING EXCELLENCE

**[kellybrotherspainting.com](http://kellybrotherspainting.com)**

CA Lic #822843 NV Lic #68238





## PUBLIC WORKS

The staff within the District’s Public Works department are honored to be frontline environmental stewards, ensuring the responsible use and protection of the natural resources that serve the communities of Incline Village and Crystal Bay.

The Public Works Department is comprised of six divisions:

**Administration** – Customer service, utility meter reading, customer billing, and administrative support.

**Engineering** – Design and project management in support of all IVGID departments, compliance inspection, and backflow program.

**Utility (Water & Sewer) Operations**– Pipeline, treatment, laboratory services, and snow removal for IVGID facilities.

**Waste Not** – Oversee the solid waste and recycling contracts, environmental education, sustainability, and Tahoe Water Suppliers Association membership.

**Fleet** – Equipment purchase and maintenance for all IVGID Departments' vehicles.

**Buildings** – Building maintenance of all IVGID facilities.

One of the most precious natural resources used daily by the community of Incline Village and Crystal Bay is the water we get directly from Lake Tahoe. Our water system is one of only 14 surface water systems out of a total of 592 systems throughout Nevada. Tahoe’s remarkably pure water is pumped directly out of the lake, tested, and treated at the Burnt Cedar Water Disinfection Plant. This plant is a state-of-the-art disinfection plant that utilizes ozone and ultraviolet disinfection technologies.

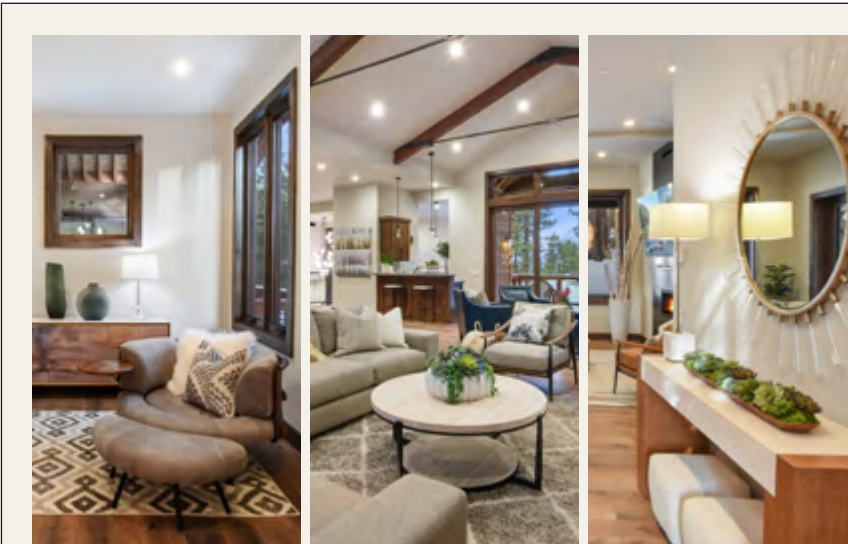
The rest of our water treatment system consists of approximately 100 miles of water mains plus multiple pump stations, reservoirs, and pressure zones, all working together to deliver delicious Tahoe Tap® water to our

community, and to ensure sufficient pressure and flow for fire suppression purposes.

Our Pipeline and Treatment staff continue to provide safe and reliable drinking water as well as maintain the wastewater treatment system to ensure the protection of the groundwater and Lake Tahoe.

In addition to all the daily work that goes into operating and maintaining the water and sewer systems, the Utilities crew keeps up with snow removal and defensible space at all the District’s venues. Both of these operations are often unseen by many as they occur as dawn’s early light, but their hard work is necessary and greatly appreciated by all.

Waste Not began as a community-driven effort to bring recycling collection and environmental education to Incline Village and Crystal Bay. Waste Not’s first community conservation programs were the establishment of source-separated recycling collection and school education programs to promote waste reduction. Over time, the recycling program was modified to the present



  
**Sierra Verde**  
HOME DESIGN

775.831.2204 | SierraVerdeGroup.com

SHOP THE SHOWROOM

**HunterDouglas**  **Gallery**

797 Southwood Blvd. Lower Level - Incline Village

single-stream cart collection system. Household Hazardous Waste and Electronic Waste collection was added in the mid-1990s and continues to date. From our bear awareness and trash enforcement duties to Drink Tahoe Tap messaging – all our programs focus on source water protection.

In 2002, Waste Not became the home agency for the Tahoe Water Suppliers Association (TWSA), now in its 22nd year. Waste Not’s role in source water protection in the Tahoe Basin now includes a presence at Tahoe’s regulatory and policy table; advocating for 10+ years on drinking water protection related to aquatic invasive species projects, impacts of tourism on the watershed, climate change, wildfire and other emerging topics such as microplastics.

All members of the Public Works team work together to ensure that when you turn on the tap, safe and reliable water is delivered; and when you send that water down the drain, the wastewater is treated in such a way as to reclaim almost 100% and return it to the environment to be reused again.



**AWARD RECOGNITION:  
MADONNA DUNBAR**

The entire district is celebrating Madonna Dunbar as she is the recipient of the 2024 Golden Pinecone Sustainability Award – Lifetime Achievement Award presented by the non-profit organization greenUP!

Madonna is a passionate leader within the Tahoe Basin. She

dedicated her professional life at IVGID to the education of sustainable living by promoting recycling, conservation, watershed protection, Drink Tahoe Tap, and living with wildlife. Thank you Madonna for your 17 years of dedicated service!

greenUP! was started in 2008 to pull together environmental non-profits in the Reno-Tahoe region to share information and promote common initiatives. greenUP! founded the Nevada Green Business Network and is a founding member of the Green Dining Nevada coalition

**HOUSEHOLD HAZARDOUS WASTE  
COLLECTION RECAP**

The Public Works Waste Not team hosted 18 special waste collection events during the 2024 season. The special waste program collects Household Hazardous Waste (HHW) and Electronic Waste (E-Waste) from Crystal Bay and Incline

Village residents. The Waste Management Franchise agreement funds the program. Waste Not conducts the HHW and E-Waste program by appointment from Memorial Day through Labor Day at no additional cost to participants. The 2024 season was extended through September to provide 430 customers with disposal of common HHW and E-Waste materials. The HHW is collected by staff, sorted, prepared, and stored on-site for monthly pickup by our hauler, Clean Earth. A Hero Environmental technician assisted the Waste Not team, and together, they collected 16 tons of materials during the 2024 season. The season landfill diversion consisted of 5 tons of E-Waste recycled through Intelligent Lifecycle Solutions, 250 pounds of Lithium-Ion Batteries recycled with Redwood Materials, and 238 lead acid batteries collected by Interstate Batteries. The community recycled 4.9 tons of latex paint, 170 pounds of fluorescent bulbs, and 1.3 tons of household batteries. All other waste streams were disposed of by destructive incineration, treatment, or fuel blending.

Waste Not Community Clean-up Events occur throughout the spring, summer and fall months.



**WELCOME FALL!**

Reliable local contact for your second home

Available 24/7, 365 days

Avoid fines

Professional full service caretaking for your home

Project Management • Contractors • House Cleaners

FREE  
ESTIMATE



SIMPLE. LOCAL. RELIABLE. READY

[www.managehome.net](http://www.managehome.net)

530.500.2777







Scan the QR code to view a 1-minute video highlighting the perks of having an IVGID Picture Pass.



## IVGID PASSES & PUNCH CARDS EXPLAINED

Each parcel and dwelling unit that is assessed a Recreation Facility Fee by the Incline Village General Improvement District is eligible to receive a combination of IVGID Recreation Passes (aka Picture Passes) and Punch Cards, totaling five (5), as suits their personal needs. These cards are paid for with the annual Recreation Facility Fee that is reflected on your Washoe County tax bill.

IVGID Picture Passes and Punch Cards allow the holder to pay a reduced rate at all IVGID facilities\* and provide access to the IVGID beaches\*\*.

## ADDITIONAL PASSES & PUNCH CARDS

A property owner may pay a fee (one-fifth of the current Recreation Facility Fee) for each additional IVGID Recreation Pass and/or Punch Card, up to a total of five (5) additional cards (with a maximum of three additional cards of either type). Any additional purchased passes may not be used for reduced rates at IVGID golf courses.

The same policy applies to those property owners who pay a reduced annual Recreation Facility Fee and who do not receive beach privileges - individuals who fall under this classification may also purchase additional passes and/or cards at one-fifth of their current Recreation Facility

Fee, but these passes/cards will exclude beach access and golf privileges.

For more detailed information on the Recreation Facility Fee and associated privileges please search for "IVGID Ordinance 7" on the YourTahoePlace.com website.

## WHERE TO PICK UP PASSES

IVGID Picture Passes and Punch Cards are issued at the Incline Village Parks & Recreation Department Counter (located inside the Recreation Center at 980 Incline Way, Incline Village) during regular business hours.

**Your IVGID Pass is your key to unlocking all the great benefits that come with being an IVGID Pass holder!**

## IVGID PICTURE PASSES

- May only be used by the person to whom it has been issued, similar to a driver's license.
- Has a photo of the person to whom it has been issued.

\*The Recreation Punch Card can be used to pay for any of the following privileges:

- For beach access parcels: The full cost of guest access to the beaches, Burnt Cedar pool and daily boat launching fees.
- For all parcels: The difference between the regular rate and IVGID Picture Pass holder daily or hourly rates at the Recreation Center, Tennis Center, Diamond Peak Ski Resort, and IVGID golf courses - the IVGID Picture Pass holder rate must still be paid. For example, if the regular rate for an adult lift ticket at Diamond Peak is \$170 and the Picture Pass holder rate is \$35, we would deduct \$135 from your Punch Card(s) and you would only have to pay \$35 via a credit card at the time of purchase. If you didn't

have \$135 on your Punch Card you would have to make up the difference with another Punch Card or your credit card. The Punch Card essentially buys down the rate to the IVGID Picture Pass holder rate. You or your guest will still have to pay the IVGID Picture Pass holder rate (\$35 in this example).

\*\* Punch Cards (except those classified as "no beach access") will provide access to the IVGID beaches presuming there is enough value on the Punch Card to purchase the access required for all members of the party. Punch Cards offer a convenient way to provide beach access to guests, without having to accompany them to the beach gates. Alternatively, Picture Pass holders can pay for their guests' beach access in-person at the beach gates via credit card.



## IVGID PASSES & PUNCH CARDS

- Issued for a term of six months to five years.
- \$15 replacement fee if lost or stolen.

### Beach Access Parcels

An IVGID Picture Pass with beach access offers the following privileges:

- Free admission to Incline Beach, Ski Beach and Burnt Cedar Beach and pool area for the pass holder.
- Ability to bring guests into IVGID beaches for a fee when Picture Pass holder accompanies guest(s).
- Boat ramp access at Ski Beach for a fee.
- Reduced rates for golf, ski, tennis and pickleball, hunting, recreational programs and the Recreation Center, on either a daily or seasonal basis.
- Reduced rates for rental of the Chateau at Incline Village, Aspen Grove community building and park area, and all athletic fields.

### No Beach Access Parcels

These are parcels for which property owners pay a reduced annual Recreation Facility Fee and as a result do not receive beach access privileges. A “No Beach” IVGID Picture Pass offers the following privileges:

- Reduced rates for golf, ski, tennis and pickleball, hunting, recreational programs and the Recreation Center, on either a daily or seasonal basis.
- Reduced rates for rental of the Chateau at Incline Village, Aspen Grove community building and park area, and all athletic fields.

### IVGID PUNCH CARDS

- Issued in lieu of an IVGID Picture Pass.
- Completely transferable - can be used by anyone who possesses it.
- Issued as an electronic scan card with an initial stored value equal to one-fifth of the annual Recreation Facility Fee (value is reduced with each use).

- Must be renewed annually after June 1.
- A Punch Card will expire the following May 31 regardless of when it is issued.
- \$15 replacement fee plus payment of any amount used if lost or stolen. Cannot be replaced if completely used.
- Additional Punch Cards can be purchased at one-fifth of the annual Recreation Facility Fee.
- Additional Punch Cards do not have golf privileges and some limitations apply.

Scan this QR code for details on IVGID Ordinance 7 - the ordinance establishing rates, rules and regulations for IVGID Picture Passes & Punch Cards.



### PICTURE PASS FAQ & TIPS

We'd like to remind all IVGID Picture Pass holders to please bring your Picture Pass with you every time you visit an IVGID-managed venue if you'd like to receive your special IVGID discounts. And please be courteous to our front-line staff when they ask to see your pass! They are simply doing the job our community and our Board of Trustees has requested of them by asking for your pass.

#### But can't you just look me up?

Our front-line staff at the venues (Beaches, Golf Courses, Tennis & Pickleball Center, Diamond Peak) often get asked why we can't just look Picture Pass holders up in our database. The short answer is that the check-in/check-out stations at our venues do not have access to our IVGID resident database, so they cannot see whether you have a Picture Pass and whether it's active.

And the extended answer is that, even if it was possible, looking up a resident and verifying privileges is a lengthy process that takes time and knowledge of Ordinance 7. This is a function only venue managers have access to, and if we were to look up even a few residents, it would significantly slow down our service to you and other guests looking to check-in/out.

#### I'm in there all the time and you know me. Do you really need to see my pass every time?

Yes. Even if you visit the same venue many times, please bring your Picture Pass with you for EVERY visit.

Picture Pass holder status and privileges can change on a daily basis, and our staff must verify that your privileges are active every time they provide a discount (or access at the beaches). In order to continue to offer discounts to IVGID Picture Pass holders, we need to ensure that only those who are entitled to the discounts are receiving them, and that means scanning your Picture Pass every time.

#### Pro Tip: Take a photo & store on your phone

We get it - it can be difficult to remember your pass when you're heading out to play. But what's the one thing we all carry around with us everywhere these days?

Yup, your smart phone! And guess what, it has a camera. So, take a photo of your Picture Pass and save it on your phone somewhere easily accessible. (While you're at it, take photos of all the Picture Passes in your family.) Then you can simply pull up the photo and our staff can scan the barcode as if it were your actual pass. Easy-peasy!

## PARKS & RECREATION COUNTER

We're delighted to be at your service at the IVGID Parks & Recreation Counter, acting as the central hub for our wonderful community, serving residents, visitors and guests alike. Our dedicated team is committed to providing a wide range of services, making us the heart of Incline Village.

### OUR OFFERINGS SPAN A MULTITUDE OF ESSENTIAL FUNCTIONS, INCLUDING

- Issuing IVGID Picture Passes
- Distributing IVGID Recreation Punch Cards
- Managing gym memberships
- Overseeing kayak and paddleboard storage
- Managing parks facility rentals

- Handling group picnic rental bookings at select locations
- Registering participants for activities and programs
- Providing clarification on Ordinance 7 and recreation privileges
- Dissemination of District information to the general public
- In essence, we're your go-to resource at the Recreation Center for information, assistance, and guidance on virtually anything related to IVGID.

### PARKS & RECREATION COUNTER DETAILS

We're here to assist you from 9am to 5pm, seven days a week.

### CONTACT INFORMATION

**Phone:** 775.832.1310

**Email:** Feel free to email us at [parksandrec@ivgid.org](mailto:parksandrec@ivgid.org)

**Location:** Incline Village Recreation Center, located at 980 Incline Way, Incline Village, NV.

To make your experience with us even more seamless, we work diligently to ensure that a wealth of information is readily available on our website, [www.YourTahoePlace.com](http://www.YourTahoePlace.com). We invite you to start your journey by visiting our website to find answers to your questions.

# The *Connections* You Make Matter.

Your Incline Village Experts



LUXURY PORTFOLIO INTERNATIONAL *Leading* REAL ESTATE COMPANIES IN THE WORLD



**Karen Bruno**  
(775) 232-4109  
[kbruno@dicksonrealty.com](mailto:kbruno@dicksonrealty.com)  
NV lic# S.37064



**Phil DeLone**  
(775) 224-5866  
[pdelone@dicksonrealty.com](mailto:pdelone@dicksonrealty.com)  
NV lic# S.198319



**Marianne Pearsall**  
(775) 742-2975  
[mpearsall@dicksonrealty.com](mailto:mpearsall@dicksonrealty.com)  
NV lic# S.28347



**Jackie Taormina**  
(775) 298-6571  
[jtaormina@dicksonrealty.com](mailto:jtaormina@dicksonrealty.com)  
NV lic# S.198635



**Jeffrey Loftin**  
(775) 468-7325  
[jloftin@dicksonrealty.com](mailto:jloftin@dicksonrealty.com)  
NV lic# BS.146214



**Mary Reimer**  
(775) 742-7020  
[mreimer@dicksonrealty.com](mailto:mreimer@dicksonrealty.com)  
NV lic# S.28491



930 Tahoe Blvd Suite 902, Incline Village, NV 89451

[DICKSONREALTY.COM](http://DICKSONREALTY.COM)





CONTACT ONE OF OUR GLOBAL REAL ESTATE ADVISORS TODAY



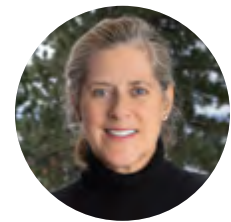
**TERRY BARBERY**

775.220.0686  
NV S.66337 | CA DRE 02092890



**JAMIE GOLDEN & KRISTI THORDARSON**

775.843.9891 | 775.843.9892  
NV BS.0031480 | NV BS.0033690



**YVETTE SHIPMAN**

775.298.1599  
NV S.066464 | CA DRE 01099340



**KHAL PLUCKHAN**

775.298.1196  
NV S.182170



**DENISE BREMER**

775.342.4660  
NV S.173035 | CA DRE 02120073



**MICHELLE SEELEY**

530.306.5450  
NV S.0200087 | CA DRE 02146860



**EDEE CAMPBELL**

775.232.5262  
NV BS.144750



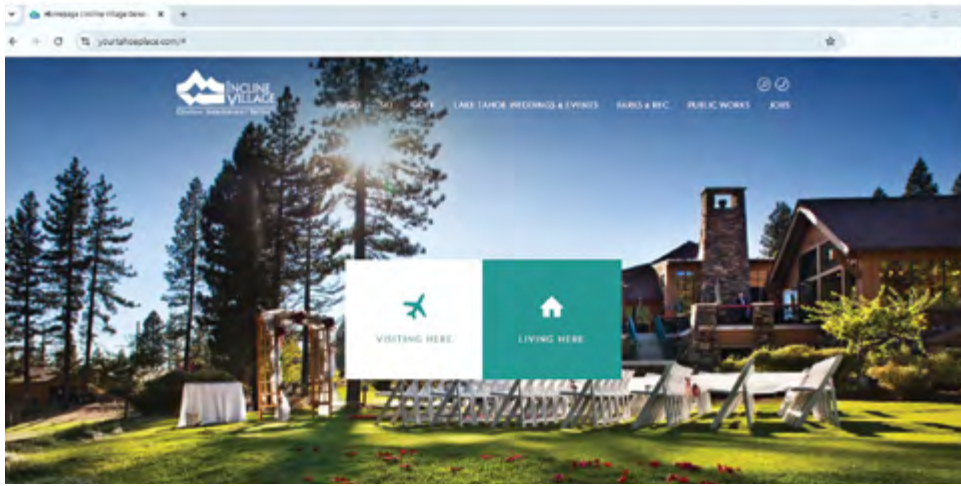
**GRETCHEN LANCASTER SPROEHNLE**

775.413.0112  
NV S.185892 | CA DRE 02041718



**ALEX MIN**

530.320.7232  
NV S.0169532 | CA DRE 01376026



### PRO TIP

If you're looking for specific information, try the website's search functionality first! Look for the little search icon in the top right hand corner of any page on the site. It's often faster and easier than clicking through the menu navigation to find the info you're looking for.

## WHAT YOU CAN FIND ON THE IVGID WEBSITE

The Incline Village General Improvement District does a lot of things for the community here in Incline Village and Crystal Bay.

It supplies clean, delicious Tahoe Tap® drinking water to our community via our Public Works/Utilities department. It collects and processes millions of gallons of sewage generated by the homes and businesses in our community, transporting it to our Incline Village treatment plant and then exporting the treated effluent out of Tahoe Basin via the Effluent Export Pipeline and down to the IVGID-maintained wetland in the Carson Valley.

It manages the solid waste (i.e. trash) service agreement with Waste Management for the community. And it operates a variety of community-owned recreation venues and facilities such as Diamond Peak Ski Resort, the two Incline Village golf courses, the Incline Village Tennis & Pickleball Center, the Incline Village Recreation Center, the restricted-access IVGID beaches, and various public parks and fields throughout the community.

Supporting all of that is an Administration team consisting of Human Resources, Finance/Accounting, Information Technology and Administrative Services that works behind

the scenes to ensure the District runs as smoothly and efficiently as possible.

Overseeing all of that is an elected five-member Board of Trustees who meet regularly to discuss District business.

As mentioned above, it's a lot!\*

So where do you go if you want to get more information about any/all of those IVGID services, departments and venues?

The best place to start is our District's website - [www.YourTahoePlace.com](http://www.YourTahoePlace.com).

On the District's website, you'll find links in the top navigation to all of the major aspects of IVGID's operations, from the water/sewer/trash services that fall under the purview of the IVGID Public Works department to the recreation venues, administrative functions, and Board of Trustees information.

Did you recently move to the Incline Village/Crystal Bay community? We have a dedicated landing page with links and resources to help you get to know IVGID and what the District does and does not do within the community here: <https://www.yourtahoeplace.com/ivgid/about-ivgid/new-residents>

\* But IVGID doesn't do everything. Washoe County and various other local agencies and special districts take care of things like road maintenance and snow removal, fire protection, law enforcement, wildlife issues, emergency services, local schools, power and natural gas service, public transportation, etc. There's a good list of links and resources on our "New Residents" page of the IVGID website: [www.yourtahoeplace.com/ivgid/about-ivgid/new-residents](http://www.yourtahoeplace.com/ivgid/about-ivgid/new-residents)



Do you have questions about your water, sewer or trash service? Use the search icon or navigate to the information under the “Public Works” menu in the navigation bar to find links and resources for most any question you might have, including all of the forms needed to establish/cancel/transfer service.

Are you looking to recreate at one of the IVGID owned venues in the community? You can find rates/prices, operating hours and seasons, membership information and more with just a few clicks. And if you’re an IVGID Picture Pass holder, be sure to look for the discounted rates that are offered for many of the programs and services that IVGID venues offer.

Do you want to follow what’s happening at the IVGID Board of Trustees meetings and learn more about the top-level decisions our elected Trustees are considering? You can search for “IVGID Board of Trustees” or start with the “IVGID” menu in the navigation bar. From there you’ll find dedicated pages that list who our Trustees are, upcoming meeting agendas and minutes, Board-appointed committee information, and even resources for folks who are considering running for IVGID Trustee themselves.

Do you want to throw a party or host a wedding? Our Weddings & Venues portion of the website has almost everything you need to know to figure out which venue might be perfect for your next gathering - whether that’s an informal beach gathering or a glamorous wedding reception at The Chateau with full-service catering and event planning support.

Are you interested in looking into IVGID’s budget and how the District spends its money? Look for the Financial Transparency section of the website under the “IVGID” navigation item for budgets, reports, the chart of accounts, audit reports and tools to dig into specific accounts for more details.

Maybe you’d like to get a job working here in the most beautiful place on earth? IVGID is always hiring for a wide range of seasonal and year-round positions. Whether you want to work outside, inside, full-time or part-time, seasonally or year-round, the Jobs portal has listings for many different opportunities that might fit the bill. Check out [www.yourtahoeplace.com/employment](http://www.yourtahoeplace.com/employment) to search jobs and apply.

Do you want to pay your water or sewer bill, or set up auto payment for those utilities? The Water & Sewer Bill Pay page is where you need to be.

So, as you can see, the YourTahoePlace.com website is a great resource for all of your IVGID-related information needs. And the search functionality is a great place to start if you’re looking to get information on a specific topic.

### OTHER WAYS TO GET INFORMATION

For those looking for specific account information related to your IVGID Picture Passes or Punch Cards, or questions regarding your family’s recreation privileges, the Recreation Counter inside the Incline Village Recreation Center can answer all of your questions. The Recreation Counter staff are also very knowledgeable about all of the IVGID recreation venues. Walk in during business hours, give them a call at 775.832.1310 or email [parksandrec@ivgid.org](mailto:parksandrec@ivgid.org).

If you need more information about your water or sewer accounts or bills, you’ll want to contact the Public Works Administration Desk at 775.832.1203 or [pw@ivgid.org](mailto:pw@ivgid.org).

For all other inquiries, the general IVGID phone number is 775.832.1100 and the general email address is [info@ivgid.org](mailto:info@ivgid.org) and they can direct your call/email to the appropriate person or department.



INSPIRED BY NATURE

CA 513623 | NV 33717B

**estate**  
LANDSCAPE

Luxury Landscapes, Expert Tree Care.

CA 513623 | NV 33717B

530.546.2042 • [estatelandscape.com](http://estatelandscape.com)



Incline Village has several venues available for your next party, family reunion, wedding, sporting event, or meeting in North Lake Tahoe.

### **INCLINE VILLAGE RECREATION CENTER & BOCCE PARK**

The Recreation Center offers year-round facilities for birthday parties including a group fitness room, indoor gymnasium and indoor pool. Adjacent to the Recreation Center, the new Bocce Park is a great outdoor space that is available for parties and rentals.

### **PARKS AND FIELDS IN OUR COMMUNITY**

On the west end of town, Preston Park and Ball Field is another great location for a family gathering, work outing or your child's birthday party. In addition, Village Green and Ridgeline Park offer wide open spaces for activities and have multi-use fields for your softball, baseball and soccer needs for tournaments, family reunions, or corporate events.

### **BEACH PICNIC AREAS**

For IVGID Picture Pass holders (with beach access), Incline and Burnt Cedar beaches have picnic areas to reserve for your spring or summer event. No need to arrive hours before your event to secure a spot for your group. The

designated beach sites include picnic tables offering you and your friends an area to picnic and enjoy the beach. The volleyball courts and bocce area is also now available for group rentals. Each guest is still responsible for beach access fees.

Reservations at all sites are taken on a first-come, first-serve basis at the Parks & Recreation Counter. Please call 775.832.1310 or stop by and see us for rates or more information. Payment is required with your application.

### **TENNIS & PICKLEBALL CENTER**

Sitting along a year-round creek, the Incline Village Tennis & Pickleball Center is a beautiful location for your private tennis or pickleball event, clinic, or tournament. Rent individual courts or rent the entire Pickleball Center (15 upper courts). The newly renovated deck can also be rented for events.

### **THE CHATEAU AT INCLINE VILLAGE**

The Chateau at Incline Village, radiating with Tahoe charm, is located at the Championship Golf Course at 955 Fairway Blvd. Vaulted ceilings, stacked rock fireplaces and expansive decks all enhance the beauty of the natural surroundings. Spectacular mountain,

golf course and lake views surround this 13,500-square-foot venue. Our professional food & beverage service has earned quite a reputation for itself as the provider of great food, outstanding service and a guaranteed wonderful experience. From a large formal wedding to a small meeting, the Chateau at Incline Village can be customized to fit your needs. Choose us for your next meeting, wedding and reception, party, fundraiser or special event. For reservations or more information, please call 775.832.1240 or visit [www.inclineweddings.com](http://www.inclineweddings.com).

### **ASPEN GROVE**

Given its name for its beautiful location, Aspen Grove is located across the street from Lake Tahoe and nestled among the aspens next to tranquil Third Creek. Aspen Grove is the perfect outdoor setting for your Tahoe wedding and reception or special event. Available for gatherings during the warmer months. Aspen Grove includes a quaint picnic tables amid the shady grove of mature aspen trees. The outdoor area can accommodate up to 150 guests. In-house catering and bartending services are available for your convenience. For reservations or more information, please call 775.832.1240 or visit the Aspen Grove page of the [YourTahoePlace.com](http://YourTahoePlace.com) website.

### **INCLINE VILLAGE GOLF COURSES TOURNAMENTS & GROUPS**

The Incline Village Golf Courses offers special rates for groups of 16 or more. The unique Robert Trent Jones, Jr. designed Mountain Course and the renowned Robert Trent Jones, Sr. designed Championship Course provide fun and challenging options for all levels of golfers. Fill out a tournament inquiry form and our staff will contact you with options.

**RENTAL APPLICATION FORMS & LINKS** To download rental application forms and links for all of these venues, please visit [www.yourtahoeplace.com/parks-recreation/about-recreation/group-rental-facilities](http://www.yourtahoeplace.com/parks-recreation/about-recreation/group-rental-facilities)



# **SAFETY IS A SHARED RESPONSIBILITY**

Explore the Mountain Safety Guide to learn everything you need to stay safe on the slopes



View the guide online and test your knowledge for a chance to win a Ski CA Gold Pass: [safety.skicalifornia.org](https://safety.skicalifornia.org)





## AQUATICS

The IVGID Aquatics team develops new and innovative programming throughout the years, adjusting to our community's needs. Today, the Aquatics team leads a group of about 60-70 staff including lifeguards, swim instructors and coaches. Our team conducts safety training for staff as well as community members including First Aid, CPR/AED, Lifeguarding and Aquatic Skills courses/training.

The Aquatics team also manages the District's swimming pools and beach

facilities. The Recreation Center Pool, built in 1992, is an indoor 25-yard competition pool that provides opportunities for year-round programming and recreational use. The Burnt Cedar Pool, built in 2022, is a seasonal community pool that sits overlooking Lake Tahoe at Burnt Cedar Beach.

Through our various summer camps, the Aquatics team teaches children ages 5 and up about pool and beach safety, as well as lifeguarding and paddling skills.



## BEACHES

During the summertime, the District's restricted-access beaches are one of the most popular venues for Incline residents to relax and spend their time. IVGID manages the following four beaches (listed from east to west): Hermit Beach, Ski Beach (and the Ski Beach boat ramp), Incline Beach, and Burnt Cedar Beach.

District staff manage beaches for residents and their guests and operate in accordance

with the beach access rules incorporated in Ordinance 7. Beach staff are also trained through the Tahoe Resource Conservation District (TRCD) regulations to help protect Lake Tahoe from invasive species by ensuring all watercraft entering Lake Tahoe via the Ski Beach Boat Ramp have proper intact inspection seals from an aquatic invasive species inspection point before launching.



## COMMUNICATIONS & MARKETING

IVGID's Communications and Marketing team evolves and adjusts our outreach efforts seasonally, with the goal of ensuring that all of our residents, visitors and community stakeholders get the information they want and need about District programs, services, events, venues, budgets and major projects.

We accomplish this via website updates, email newsletters, social media posting,

media and public relations outreach, and this magazine. In addition, we're constantly integrating new technologies into our outreach including text messaging updates from Diamond Peak and looking into new communications tools such as the Civic Plus Board Materials portal and potentially AI Chatbot customer support on our District websites.





## FACILITIES

The Chateau and Aspen Grove feature event space and catering service for all of life's special moments - weddings, rehearsal dinners, holiday celebrations, birthdays, baby showers, celebrations of life, golf events, fundraising events for non-profits benefiting Incline Village/Crystal Bay residents, and much more.

IVGID's Facilities department also hosts a number of corporate meetings for both local and non-local businesses.



## HUMAN RESOURCES

Our dedicated HR team administers the District's employment policies and benefit programs, including health insurance, retirement programs, time off benefits, etc. Our team works to ensure staffing needs are evaluated, employment-related issues are addressed and training programs are developed to ensure employee engagement and development continue.

We'd like to introduce the District's Human Resources team:

- Erin Feore, Director of Human Resources
- Curtis Trujillo, Senior HR Analyst/Safety Supervisor
- Lisa Hoopes, Talent Acquisition Specialist
- Lori Parsons, Senior Admin Receptionist/HR Clerk
- Kathy Fillmore, Payroll/Benefits Coordinator
- Kaitlin Banahan, HR recruiting Assistant
- Chris Easley, Safety Specialist



## PARKS DEPARTMENT

The Parks Department continues to pursue our mission of beautifying our community while providing recreational access year-round. Parks are essential outdoor spaces that are utilized by a wide range of community members - from the dog owners who congregate at Village Green for exercise and socializing, to the Fit Trail users getting a workout in, the Bocce Ball players enjoying some friendly competition, and

the sports teams that utilize Village Green, Preston Field and Ridgeline Park.

The Parks Department is proud to assist the Washoe County School District by helping maintain the High School stadium field and providing fields for the Incline Village High School baseball and softball teams.



## RECREATION CENTER

The Incline Village Recreation Center remains the heart of the community. It is the go-to source for all Parks & Recreation Department programming, services, and community events.

Recreation Center amenities and services include center memberships, a variety of cardiovascular and strength equipment, a

full size gymnasium, 40+ group and water fitness classes, and a 25-yard indoor pool. Additionally, the Recreation Center is the administrative home to all department programming, and the Parks and Recreation Counter that manages recreation privileges (Recreation Passes and Punch Cards), household updates, program registration, kayak storage rack and facility rentals, and so much more.



## SAFETY TEAM

The primary goal of the IVGID Safety Team is the safety of our employees, community and guests across all District venues. We work towards this goal through policy & procedure revision, ensuring compliance with regulatory agencies, employee safety training, engagement from the safety committee and responding to safety concerns as they arise.

IVGID's safety team is composed of Curtis Trujillo (Senior HR Analyst/Safety Supervisor), the District's Safety Specialist Chris Easley, and the Ski Patrol Director/

Safety Coordinator at Diamond Peak Kari Brandt.

Safety is a never-ending endeavor with constant modifications and reactions to incidents. We strive to continue evaluation of current policies and practices to ensure the safety of our employees and guests.

Safety across the District is not only driven by the three safety positions of the District, it is all members of the IVGID team that drive safe workplaces and venues.



## SENIOR PROGRAMS

IVGID's Senior Programs are geared to keep aging locals active, engaged, and living their best lives with friends and neighbors. Options include a range of 55+ group fitness classes, organized walking, hiking, biking, and bocce ball programming, plus seasonal classes and clinics including 55+ ski clinics and summer moonlight hikes.

In addition, the Senior Programs staff coordinates our 55+ Senior Transportation program, which provides options for seniors who don't drive anymore to get out and run errands around town and regionally. And our ever-popular Incliners and IVCB Veterans Club programming also falls under the Senior Programs department.





**Diamond Peak Winter Jobs**

Diamond Peak offers a huge range of fun jobs this winter, whether you want to work outside on the mountain, inside the lodge, in the parking lot, or acting as a host helping our guests wherever they might be. We've got great options for full-time, part-time, weekend-only jobs, plus great perks and a community oriented vibe that can't be beat.

View the full list of jobs and apply online at [DiamondPeak.com/Employment](http://DiamondPeak.com/Employment).

**Positions Available Include:**

- Maintenance Property Operations
- Rental Shop Supervisor
- Cashier/Tickets
- Food & Beverage (Cook, Cashier)
- Lift Operator
- Parking Attendant/Property
- Shuttle Driver (CDL)/Tram Driver
- Snowmaking/Grooming
- Rental Shop
- Ski/Snowboard Instructor
- Ski Patrol

**Job opportunities for ages 14+!**

**Ages 14+:** Jr. Busser, Jr. Child Ski Center Instructor, Jr. Rental Attendant

**Ages 15+:** Jr. Parking Attendant

**Ages 16+:** Child Ski Center Instructor, Dishwasher, Prep/Line Cook

**Ages 17+:** Ski/Snowboard Instructor

**STAFF SPOTLIGHTS**

**New & Promoted Staff**

IVGID would like to welcome these new staff members who've recently joined our team or returned to it, and congratulate those existing team members who have recently been promoted into new positions within the District. If you see any of these staff members' smiling faces around the District, please say hello and/or congratulations!

**Promotions**

Meagan Ballew  
Recreation Supervisor - Sports & Community Programming

**Seasonal Managers**

Congratulations on returning in your lead role!  
  
Kari Brandt as Ski Patrol Director/Safety Coordinator  
Jon Tekulve as Director of Skier Services  
James Pedersen as Assistant Director of Skier Services

EXPERIENCE A HIGHER LEVEL OF SERVICE



★★★★★

"Five Star Service"

"First-rate, knowledgeable, and professional"




**GERMAN IMPORT GARAGE**

Audi - BMW - Mercedes - Porsche  
Mini Cooper - Volkswagen

11183 Trails End, Truckee  
[www.GermanImportGarage.com](http://www.GermanImportGarage.com)  
530-414-7733

**QUALITY**

AUTOMOTIVE SERVICING

11500 Donner Pass Road, Truckee  
All makes & models  
[www.QualityAutomotiveServicing.com](http://www.QualityAutomotiveServicing.com)  
530-448-8532



## DIAMOND PEAK SKI RESORT

1210 Ski Way, Incline Village, NV 89451  
775.832.1177 | diamondpeak.com

Diamond Peak is the ultimate family and kid-friendly ski resort featuring spectacular Lake Tahoe views, uncrowded terrain and affordable lift tickets with a laid-back atmosphere. Learn to ski or snowboard, or improve your skills by taking a group or private lesson.



Photo by Joy Strotz Photography

## ASPEN GROVE

960 Lakeshore Drive, Incline Village, NV 89451  
775.832.1240 | inclineweddings.com

Aspen Grove is located across the street from Lake Tahoe and nestled among the aspen trees next to tranquil Third Creek. Outdoor amenities include picnic tables, grassy lawn and a deck. The outdoor area can accommodate up to 120 guests.

Catering and bartending services are available through our outstanding professional food service team for your convenience.

# INMOTION

## MECHANICAL

### IT'S TIME FOR YOUR ANNUAL HEATING SERVICE

"YOUR LOCAL HYDRONICS AND HVAC EXPERTS"

BOILERS  
HYDRONIC SYSTEMS  
HEAT PUMPS  
RADIANT HEAT  
MINI-SPLIT SYSTEM  
WIFI THERMOSTATS  
AIR CONDITIONING

SMART HOME SYSTEMS  
AUTO WATER SHUT OFFS  
GAS LINES  
FIRE PITS  
ANNUAL SERVICES  
FORCED AIR

[www.INMOTIONMECHANICAL.com](http://www.INMOTIONMECHANICAL.com)

NEVADA SIDE  
**775.686.3555**

NV LICENSE:  
0090640 & 0090393

CALIFORNIA SIDE  
**530.210.2275**

CA LICENSE:  
853502



*Ouch!* We're here to help.

## Incline Orthopedics & Sports Medicine

*Walk-in, same-day, or scheduled appointments*



**INCLINE VILLAGE  
COMMUNITY HOSPITAL**

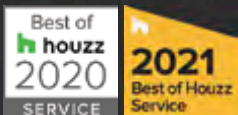
**(775) 831-6200 | [inclinehospital.com](http://inclinehospital.com)**



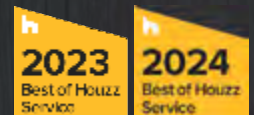
# BUILDING YOUR DREAMS

CALIFORNIA & NEVADA

RUBICON BAY - TAHOE CITY - INCLINE VILLAGE



LARGE RENOVATIONS, ADDITIONS AND NEW HOMES  
*Reinventing and Rejuvenating your Old Tahoe to Mountain Modern Home*







## THE CHATEAU AT INCLINE VILLAGE

955 Fairway Blvd., Incline Village, NV 89451  
775.832.1240 | inclineweddings.com

The Chateau at Incline Village features classic Tahoe stone and timber construction with a modern edge. This 13,500 square foot venue has vaulted timber ceilings, massive stone pillars, a spacious covered deck and offers expansive views of the mountains, the Championship Golf Course and Lake Tahoe. It is beautiful, multi-functional and flexible. It

is the perfect venue for large or small wedding ceremonies, receptions, meetings, golf events, and parties. You dream up the event and we'll make it happen! Our professional Food & Beverage team provides great food, outstanding service and a wonderful experience.

## IVGID BOARD OF TRUSTEES



**Sara Schmitz**  
Chair

932 Lakeshore Blvd.  
Incline Village, Nevada  
89451

925.858.4384  
schmitz\_trustee@ivgid.org

Term expires 2024



**Matthew Dent**  
Vice Chair

774 Mays Blvd. #10-573  
Incline Village, Nevada  
89451

775.298.1005  
dent\_trustee@ivgid.org

Term expires 2024



**Ray Tulloch**  
Treasurer

893 Southwood Blvd.  
Incline Village, Nevada  
89451

207.409.4872  
tulloch\_trustee@ivgid.org

Term expires 2026



**Michaela Tonking**  
Secretary

546 Lantern Ct.  
Incline Village, Nevada  
89451

775.225.0748  
tonking\_trustee@ivgid.org

Term expires 2024



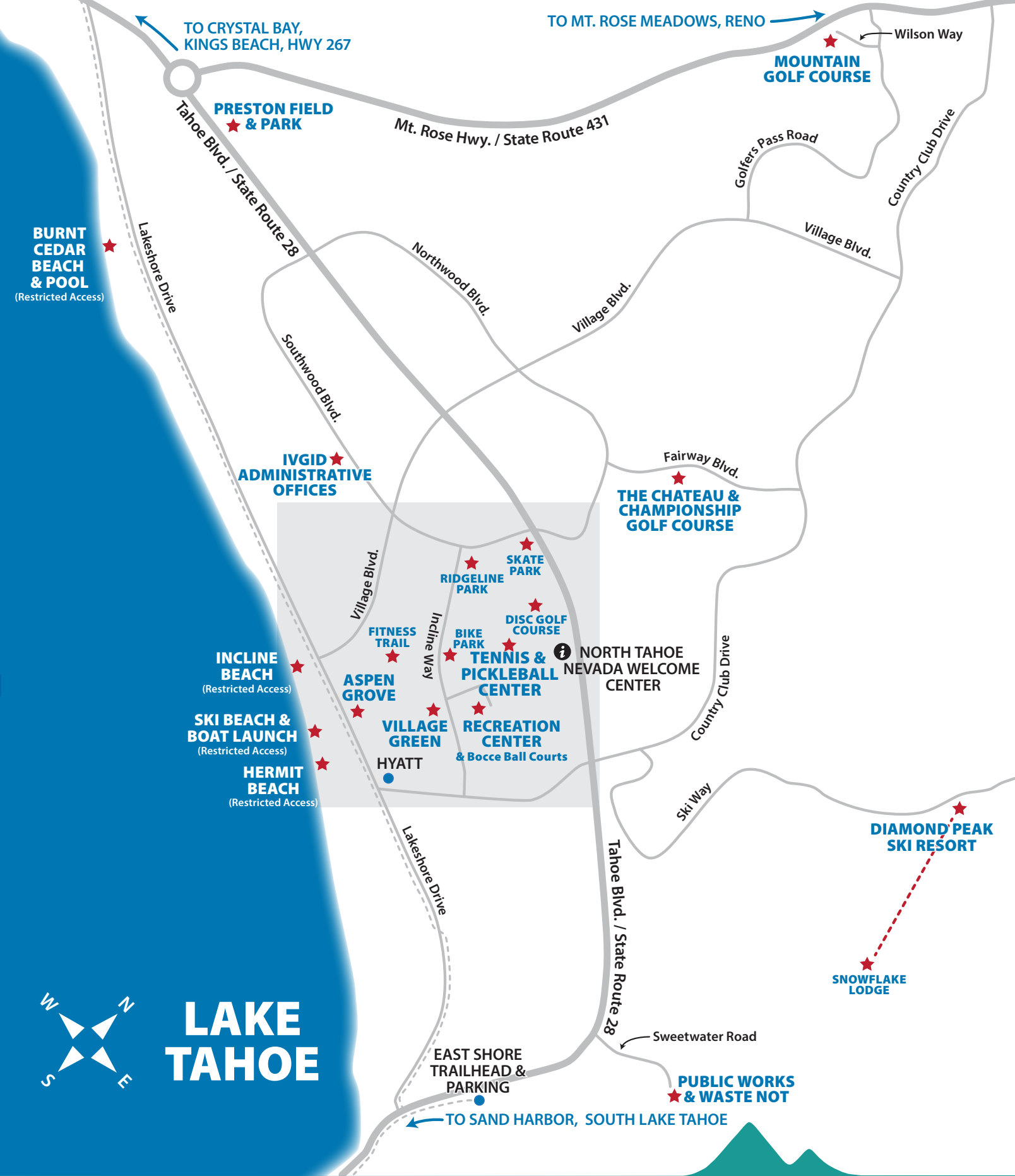
**Dave Noble**  
Trustee

893 Southwood Blvd.  
Incline Village, Nevada  
89451

775.813.1991  
noble\_trustee@ivgid.org

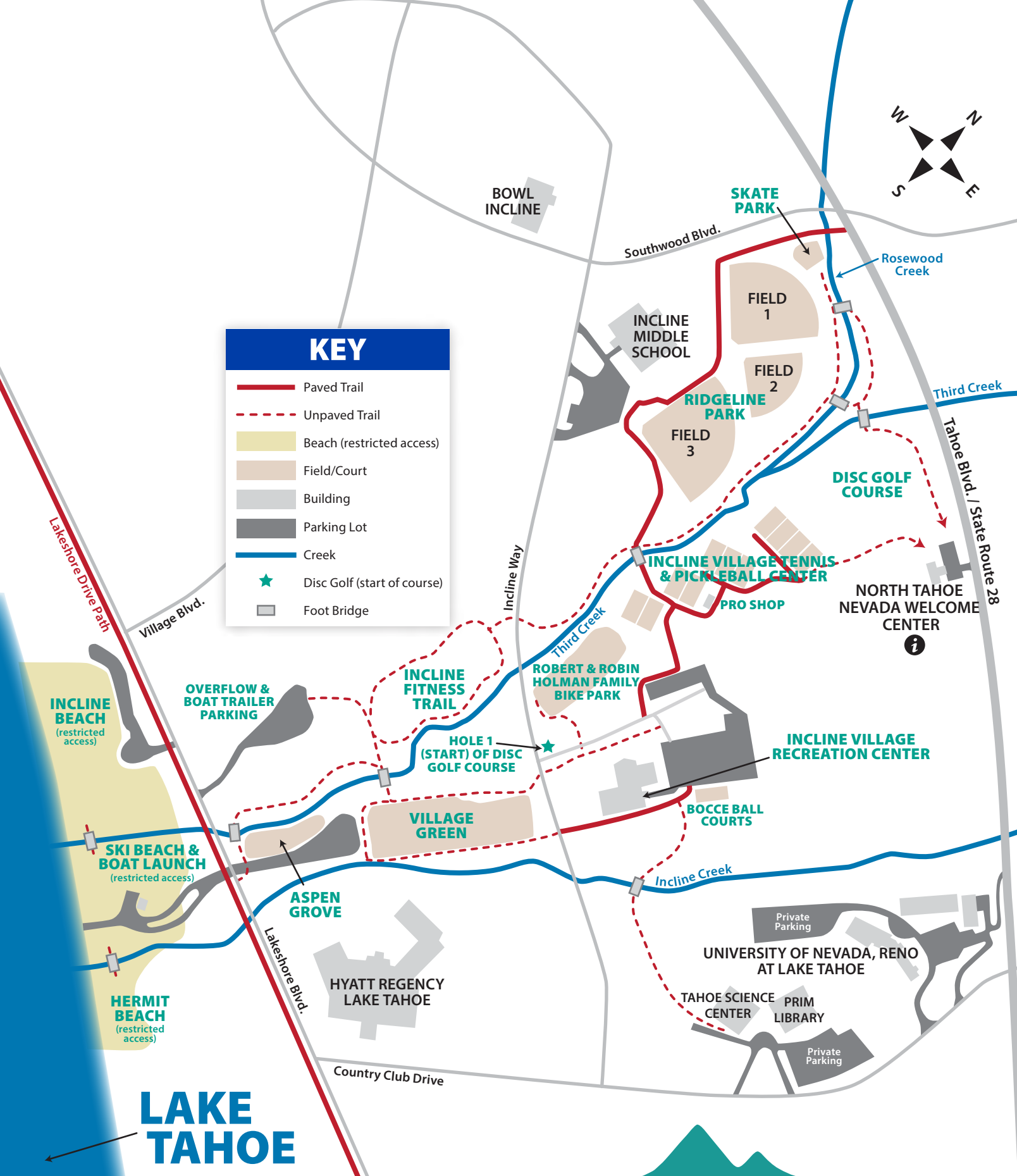
Term expires 2026





Access to IVGID Beaches (Ski Beach, Incline Beach, Hermit Beach and Burnt Cedar) is restricted to IVGID Recreation Pass holders, their guests, and Recreation Punch Card holders with beach access.

**LEARN MORE ABOUT IVGID PASSES AT [INLINERECREATION.COM](http://INLINERECREATION.COM)**



Access to IVGID Beaches (Ski Beach, Incline Beach, Hermit Beach and Burnt Cedar) is restricted to IVGID Recreation Pass holders, their guests, and Recreation Punch Card holders with beach access.

**LEARN MORE ABOUT IVGID PASSES AT [INCLINERECREATION.COM](http://INCLINERECREATION.COM)**





your *Tahoe*  
real estate experts



**KERRY DONOVAN**  
—  
775.750.2190  
Donovan Group  
Luxury Team  
NV BS.52696




**MEGAN PARR WARREN**  
—  
775.303.2672  
Donovan Group  
Luxury Team  
NV BS.143530




**KEVIN DONOVAN**  
—  
775.750.7339  
Donovan Group  
Luxury Team  
NV S.194609



**SUZIE MCSHERRY**  
—  
775.413.3106  
NV S.190396



**LAURA VITENCZ**  
—  
775.722.0005  
NV S.200037



**JANE RUBSAMÉN**  
—  
775.843.0312  
NV S.66076

**CHASE**  
INTERNATIONAL  
LUXURY LEADER





**INCLINE  
VILLAGE**

GENERAL IMPROVEMENT DISTRICT

893 Southwood Blvd.  
Incline Village, NV 89451

PRSR STD  
US POSTAGE  
PAID  
DENVER, CO  
PERMIT #5377

**75**  
YEARS



**TAHOE FOREST**  
HEALTH SYSTEM

**Your Community. Your Hospital.**



## Convenient access to high-quality health care:

- ✓ 24/7 Emergency Care
- ✓ Primary & Specialty Care
- ✓ Orthopedics & Sports Medicine
- ✓ Diagnostic Imaging
- ✓ Surgical & Laboratory Services
- ✓ Physical Therapy
- ✓ Hospice & Home Health



**INCLINE VILLAGE  
COMMUNITY HOSPITAL**



**(775) 833-4100 | [inclinehospital.com](http://inclinehospital.com)**