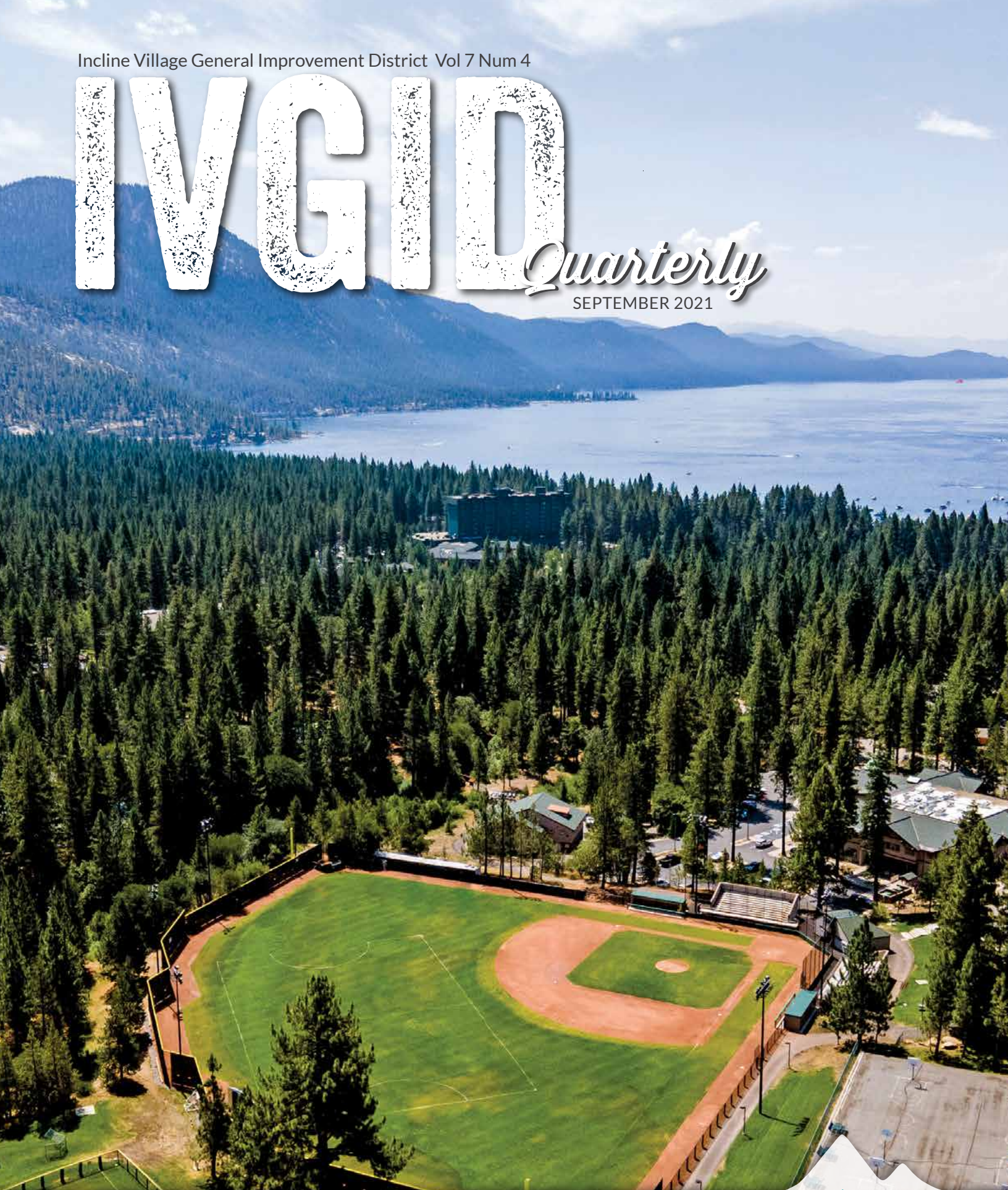


Incline Village General Improvement District Vol 7 Num 4

IVGID

Quarterly

SEPTEMBER 2021



**INCLINE
VILLAGE**

GENERAL IMPROVEMENT DISTRICT
ONE DISTRICT - ONE TEAM

www.yourtahoeplace.com



Elevate
your life.



Koch Elevator has several **residential products**, making it easy to purchase the best products that will meet your needs:

- HOME ELEVATORS
- DUMBWAITERS
- STAIR CHAIRS
- WHEELCHAIR LIFTS (INSIDE OR OUTSIDE)

**Local Family-Owned
Since 2001**

Cell: 775.247.8820

*Authorized dealers for
Inclinator of America, Savaria,
Thyssenkrupp Access, Waupaca,
Matot, Canton and Harmar.*

Off: 775.323-8822
nick@kochelevator.com



924 Incline Way, Suite C, Incline Village, NV
561 Sunshine Lane, Reno, NV

CA LIC 927006 NV LIC 054884

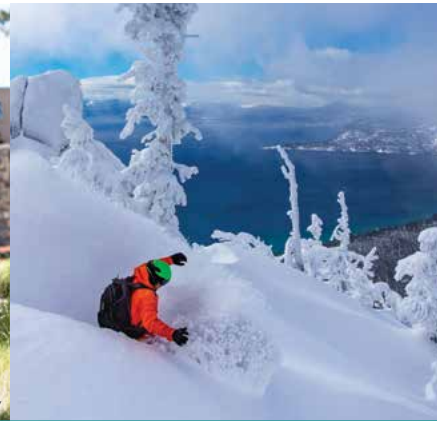
INCLINE VILLAGE TENNIS & PICKLEBALL CENTER

964 Incline Way • 775-832-1235

The newly renovated Incline Village Tennis & Pickleball Center is located in a picturesque alpine setting along a year-round creek. Our club-like facilities are open to the public with daily court fees or seasonal memberships. The center features tennis courts, pickleball courts, and a pro shop with demo rackets and paddles. Lessons, socials, tournaments and camps are offered during the summer. Find out more at InclineTennis.com and InclinePickleball.com.



Doug Miranda Photography



INCLINE VILLAGE PARKS & RECREATION

980 Incline Way • 775-832-1310

The Incline Village Recreation Center offers a holistic approach to fitness, health and wellness, including a range of specialty services. The center features an indoor pool, group and water fitness classes, a cardiovascular room, gymnasium and a variety of programs for the whole family.

Visit InclineRecreation.com for details about Recreation Center memberships and Parks & Recreation camps, programs and activities.

INCLINE VILLAGE GOLF COURSES

Championship Course • 955 Fairway Blvd
775-832-1146 (May-Oct)

A classic 18-hole public Lake Tahoe golf course featuring a Robert Trent Jones Sr. design and lake views. This par-72 course was listed "Best in State" 2012 - 2015 by Golf Digest magazine and ranked #8 in Nevada on Golfweek's "Best Courses You Can Play 2020" list.

Mountain Course • 690 Wilson Way
775-832-1150 (May-Oct)

Our 18-hole, par-58 course is fun, affordable, and quick to play with special 9-hole and twilight rates. Bring the family to enjoy the outdoors together.

Book tee times for both courses at GolfIncline.com.

INCLINE VILLAGE WEDDINGS & EVENTS

955 Fairway Blvd • 775-832-1240

Create an unforgettable experience for your Lake Tahoe wedding, meeting, celebration or golf event. Our facilities include The Chateau at Incline Village™, Aspen Grove, The Championship and Mountain Golf Courses, and Diamond Peak Ski Resort.

Let our team handle the logistics of planning for current health and safety requirements and enjoy your event. View rates and fill out an inquiry form at InclineFacilities.com.

DIAMOND PEAK SKI RESORT (DEC-APR)

1210 Ski Way • 775-832-1177

Enjoy acres of wide open spaces and fresh air, perfectly groomed trails, tree skiing and 1,840 feet of vertical. Easy access from parking lot to lifts, ski schools for all ages and the most breathtaking views of Lake Tahoe.

Purchase 2021-22 season passes online. Rates increase November 1st. Visit DiamondPeak.com for pricing and details.

Measures have been implemented at all IVGID venues to reduce touchpoints and adhere to state and local regulations. Please visit the Health & Safety sections on our websites prior to planning your visit to any IVGID venue so we can remain open and operate safely for our community. | YourTahoePlace.com



BOARD OF TRUSTEES

Chairman
Tim Callicrate
callicrate_trustee@ivgid.org

Vice Chairman
Matthew Dent
dent_trustee@ivgid.org

Secretary
Sara Schmitz
schmitz_trustee@ivgid.org

Treasurer
Michaela Tonking
tonking_trustee@ivgid.org

Trustee
Kendra Wong
wong_trustee@ivgid.org

EDITORIAL STAFF

MANAGING EDITOR
Paul Raymore

CONTRIBUTORS

Darren Howard
Madonna Dunbar
Jaclyn Ream
Tim Callicrate
Pandora Bahlman

Travis Hawks
Basia Phillips
Randy Berg
Bev Keil
Kate Nelson
IVCBA

COPY EDITOR

Kari Ferguson

CONTACT US

893 Southwood Blvd.
Incline Village, NV 89451
775.832.1100
info@ivgid.org

PUBLISHING

Each Incline Village/Crystal Bay parcel owner receives one subscription to a domestic address.

ADVERTISING SALES

CCMedia
Reno | Las Vegas
P | 775.327.4200
peggy@cc.media
www.cc.media

COVER PHOTO

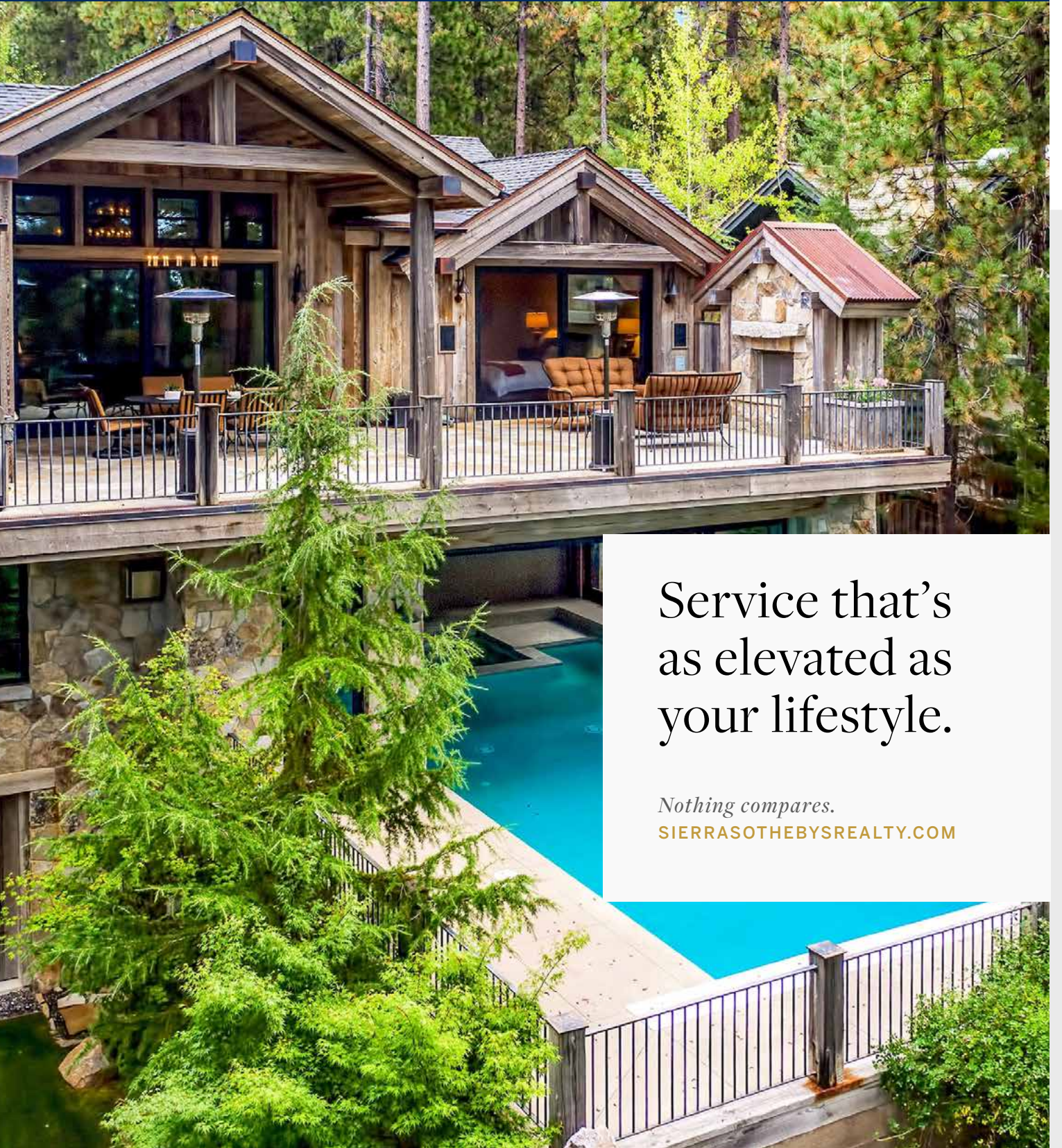
Photo by Jake Pollock

WHAT'S INSIDE

06	Welcome Message from Tim Callicrate
08	About The Parks & Recreation Counter
12	Aquatics Programs
13	Fall Sports
16	Senior Programs
19	Events You Won't Want To Miss
20	About the Incline Village Recreation Center
21	Recreation Center Update
22	Summer Camps & Sports Photo Review
24	Leave Only Footprints: Stream Zone Etiquette
26	Tennis & Pickleball
31	Incline Village Golf
36	Public Works Update
37	IVCBA Updates
38	Diamond Peak Ski Resort
42	Human Resources Update
42	IVGID's Board of Trustees
43	Incline Village Facilities
45	Incline Village/Crystal Bay Neighborhood Map
46	Heart of Incline Village/Crystal Bay

IVGID FACILITIES & COMMUNITY INFO

Aspen Grove Community Center	960 Lakeshore Blvd.	775.832.1240
Burnt Cedar Beach	665 Lakeshore Blvd.	775.832.1232
Championship Golf Course	955 Fairway Blvd.	775.832.1146
Diamond Peak Ski Resort	1210 Ski Way	775.832.1177
Incline Beach	967 Lakeshore Blvd.	775.832.1233
Incline Elementary School	915 Northwood Blvd.	775.832.4250
Incline High School	499 Village Blvd.	775.832.4260
Incline Middle School	931 Southwood Blvd.	775.832.4220
Incline Park	939 Southwood Blvd.	775.832.1310
Incline Skate Park	Tahoe Blvd. & Southwood	775.832.1310
IVGID Administration	893 Southwood Blvd.	775.832.1100
Lake Tahoe School	995 Tahoe Blvd.	775.831.5828
Mountain Golf Course	690 Wilson Way	775.832.1150
Preston Field	700 Tahoe Blvd.	775.832.1310
Public Works	1220 Sweetwater Rd	775.832.1203
Recreation Center	980 Incline Way	775.832.1310
Sierra Nevada University	999 Tahoe Blvd.	775.831.1314
Ski Beach	967 Lakeshore Blvd.	775.832.1156
Tennis & Pickleball Center	964 Incline Way	775.832.1235
The Chateau at Incline Village™	955 Fairway Blvd.	775.832.1240
The Grille at the Chateau	955 Fairway Blvd.	775.832.1178
Village Green	960 Lakeshore Blvd.	775.832.1310



Service that's
as elevated as
your lifestyle.

Nothing compares.

SIERRASOTHEBYSREALTY.COM

775.832.4900

RENO | SQUAW VALLEY | SOUTH LAKE TAHOE | TAHOE CITY | TRUCKEE | INCLINE VILLAGE



Greetings!

It seems incredible that as I write this column we are already approaching mid-August 2021! Where has the summer gone? Hopefully our property owners, residents and guests have been enjoying all of our community owned recreational amenities: the recently renovated Tennis & Pickleball Center and new bocce courts; our top flight golf courses and clubhouses; our beaches, ball fields and rec center and the entire area's hiking and biking trails. If you haven't yet been down to Burnt Cedar Beach to see the progress on the pool renovation, you're missing out! It will be a tremendous improvement to our aquatic facilities. Along with the addition of an overdue connector path between the east and west portions of the entire beach, Burnt Cedar will have greater flexibility in the use of its picnic and recreation opportunities.

Speaking of beaches, it's been discussed at the Board level that we revisit the Beaches Master Plan. This will give our Community the opportunity to openly discuss and prioritize much needed improvements at all four of our beaches:

- Burnt Cedar: Enhanced picnic sites, west end bathrooms/concessions, parking and access/egress points
- Incline Beach: New beach house, picnic areas, parking and access/egress points
- Ski Beach: Picnic areas, boat ramp and access/egress points
- Hermit Beach: Kayak/paddleboard storage

These are just some of the existing plans but there are certainly more options open for discussion.

So, as we move towards a change of seasons, the Board will continue to update the Community on Ordinance 7 changes and prioritizations, enhancements to the strategic plan,

funding for the Effluent Pipeline and pond lining projects as well as the successes of transitioning the district to Enterprise Fund accounting.

I would like to extend a heartfelt thank you to everyone for continued patience as we have navigated through some rough waters of transition and times as a result of the impacts of a worldwide pandemic! It is a challenge during normal times but has been extremely trying these past several months. Please join with me in extending a tremendous thank you to our dedicated employees who've been stalwart in their attention to safety, service and satisfaction to our Community. I also want to commend our District General Manager, Indra Winquest and his senior management team for continuing to show strong leadership and dedication through these adverse times.

It is quite a testament to the property owners, residents and guests of Incline Village/Crystal Bay that we have been able to maintain and even flourish during these very challenging and difficult times. .

What a great community!!



Tim Callicrate

Tim Callicrate,
Chairman of the
IVGID Board of Trustees

ATLANTIS PRESENTS

SETH COOK STEPHANIE QUAYLE

NASHVILLE *live!*

FRIDAY, OCTOBER 29

ATLANTISCASINO.COM/NASHVILLE



AtlantisTM
CASINO RESORT SPA • RENO

3800 S. Virginia Street | Reno NV 89502 | 775.825.4700 | atlantiscasino.com



**Parks & Rec
Counter Hours**

9am - 5pm, 7 days a week

775.832.1310
parksandrec@ivgid.org

Visit yourtahoeplace.com/parks-recreation
for holiday hours

Located inside the Rec
Center: 980 Incline Way,
Incline Village, NV 89451



ABOUT THE PARKS & RECREATION COUNTER

The Parks & Recreation Counter provides a multitude of services to residents, visitors and guests. The information and services provided by staff are so varied and comprehensive that their operation is often referred to as “the hub of Incline Village.”

Business transactions include many basics such as issuing IVGID Picture Passes and Recreation Punch Cards, managing gym memberships, maintaining kayak and paddleboard storage, facilities/rentals, booking group picnic rentals (select locations), registering participants for activities and programs, and clarifying information on Ordinance 7 and recreation privileges. In general, people call the front desk of the Recreation Center for information, help, and direction for just about anything they need to know or accomplish at IVGID.

Staff works hard to get as much information on the website as possible in order to expedite helping people get what they need. As a starting point, please check to see if your questions can be answered at inclinerecreation.com.

If you have your IVGID Passes, then you already have an account. Please call the front desk to verify. If you do not already have an account, you can set up an account and complete many routine transactions online. Once you complete the initial login and account creation you can access your account with these simple steps:

- ① Enter the primary household member’s email address on file. This email address will be the login username. Your initial password must be provided by the Recreation Counter staff.
- ② Once logged in, you will be prompted to change your password. The new password must be a minimum of 8 characters in length, contain a minimum of 1 numeric character, and a minimum of 1 special character.
- ③ Once this process has been completed, your account has been created, and you are able to register for programs and activities online.

Please contact the Parks & Recreation Counter for any assistance. Take advantage of this convenient online opportunity today.



STAFF SPOTLIGHT

Parks & Recreation Counter Staff And Recreation Center Greeters

You'll likely interact with the friendly folks at the Incline Village Recreation Center at least once a year, if not everyday. These are some of the most knowledgeable folks in the District, as they get asked all sorts of questions all day long. Whether you need to renew your Recreation Punch Cards, add a family member to your household, sign up for a Recreation Center membership, or just utilize the Recreation Center, you'll be in good hands with our incredible staff. We asked about what they like about their jobs, why they originally took the job, and what kinds of questions they get on a daily basis.



Darlene Bush
Parks & Recreation Clerk & Recreation Leader for Senior Programs (5 years with District)

What is your favorite aspect of working at the Recreation Counter?

"My favorite thing about the job is just meeting people and being involved with the community. I love my co-workers, and there's something new and different every day."



Kristen Ferrall
Parks & Recreation Clerk / Fitness Instructor (4.5 years with District)

What's the weirdest question you are asked?

"The weirdest question I am asked at the Recreation Desk is: Can I use my Recreation Punch Card at Raley's?"



Sue Jenkins
Personal Trainer / Fitness Instructor / Greeter (5 years with District)

What's the most common question you are asked?

"The most common question I get asked is: Are you from Texas? I am from London, England, originally."



LAKE TAHOE SCHOOL



Small School. Big Education.

PreK-8th Grade • Independent • Fully Accredited

Inquire now for the 2021-2022 academic school year.

775.831.5828 • www.laketahoeschool.org • knugent@laketahoeschool.org

995 TAHOE BOULEVARD, INCLINE VILLAGE, NEVADA 89451

PARKS & RECREATION STAFF SPOTLIGHT



Deon O'Leary
Parks & Recreation Clerk
(6 years with District)

What's the weirdest question you've ever been asked?

"One of the weirdest questions I've ever been asked is: How many gallons of water are in Lake Tahoe? And there are many many more... How much time do you have?"



Carol Buergin
Parks & Recreation Clerk
(15 years with District)

What's the strangest question you've ever been asked?

"The strangest question I've been asked is: Are there sharks in the lake?"



Tom Rosenthal
Senior Parks & Recreation Clerk
(10 years with District)

What's the weirdest question you've ever been asked?

"One that comes to mind is: What time do the whale watching tours go out every day?"



Kathy Fillmore
Senior Parks & Recreation Clerk
(3 years with District)

What's the one thing you wish everybody in the District knew?

"I wish everyone would read through Ordinance 7 to understand how their [IVGID Picture Pass and Punch Cards] worked; it would save us a lot of time explaining. Probably 90% of the questions we get are about how the passes work, especially the Recreation Punch Cards."



Barry Hanson
Parks & Recreation Clerk
(4 years with District)

Why did you want this job?

"I had lived here for a number of years, but didn't know many people in town. The one place everybody eventually comes to is the front desk at the Rec. Center. So I figured it was the best way to get to know people; and it worked - I can't go in to Raley's without people saying my name and stopping to chat."



Peter Salazar
Sports Instructor / Greeter
(3 years with District)

Why did you want this job?

"The reason I took this job is that I like to give back to the community, help kids stay out of trouble and work to develop their athletic abilities."

Expanding Access Improving Affordability



Outpatient MRI Now Open

Offering competitive pricing to regional outpatient MRI clinics

The Outpatient MRI Unit at Stateline Medical Center expands access, improves affordability and delivers the high-quality patient experience.

Specified Outpatient MRI services will cost \$1,125* and patients without insurance and choosing a cash pay option will receive a discount of 30% resulting in an **out-of-pocket cost of only \$787***.

*Radiologist fee will be additional. Price subject to change.

530.543.5850

165 Highway 50
Stateline, NV 89449

bartonhealth.org/medical-imaging





AQUATICS

Incline Village Learn to Swim Program: Fall 2021

Swim Lessons are offered for all ages and abilities. This fall, 30-minute classes will be held in the afternoons from 3:30 - 5:10 p.m. on Mondays and Wednesdays or Tuesdays and Thursdays for four weeks.

Fee: \$80, \$60 w/IVGID Pass (same day registration add \$10)

Register: Online at register.yourtahoepace.com; or by phone at 775.832.1310

Sessions:

- Fall Session I: Sept. 20 - Oct. 21 (no class Oct. 4 - 7) – registration opens Sept. 13
- Fall Session II: Nov. 1 - Dec. 6 (no class Nov. 11, Nov. 23 - 25) – registration opens Oct. 25

View the Swim Lesson level descriptions online at inclinerecreation.com. If your child is between two levels, please register for the lower level, the instructor can give them more advanced skills to work on. Register online, in person at the Recreation Center Counter or via phone at 775.832.1310.

Youth & Adult Private, Semi-Private Swim Lessons, Dive Lessons all ages

Private lessons are available with certified Water Safety Instructors, as well as stroke clinics with our swim coaches. To make a private lesson request, please email the Aquatics Office at aquaticschedule@ivgid.org. All private lessons are subject to availability of instructor staff. Lessons must be paid for in advance; payment must be made at the Recreation Center Counter.

Incline Aquatics Swim Team/ Northern Nevada Aquatics Swim Team (NNA)

Come join Incline's premier swim team for both competitive and novice swimmers. Our USA Swimming certified coaches will evaluate appropriate levels and practice times for each participant. For those who are participating in USA Swimming, the opportunity to travel to USA Swim meets is available. Swim team fees are due monthly. Please refer to the Swim Team level descriptions on the website. Ages 6+.

Swim Around Tahoe

Complete this program by swimming in the pool, the lake, or whatever facility you desire! Just record your yardage and we will track your progress. Upon completion of the 71-mile journey you will receive a T-shirt and your name on the "Finisher's Plaque" at the Incline Recreation Center pool. This is an ongoing program for all ages with annual registration. Fee: \$35, \$28 w/ IVGID Pass.

Splashes and Glasses

Swim, connect and indulge with other women on Thursday evenings. The program will focus on beginner, intermediate and advanced skills. Swim and then join the group for an optional apres swim outing at various locations around town.

Days: Thursdays

Time: 7-7:45pm

Location: Recreation Center Pool

Fees: \$12, \$10 w/IVGID Pass





YOUTH SPORTS

“Friday Night Lights” Youth Flag Football League

Our popular Youth Flag Football Program is open to all boys and girls in the 1st – 8th grades. Players will learn and develop fundamental football skills in a fun and non-contact way. In partnership with NFL Flag leagues nationally, our league focuses on proper attitude, work ethic, teamwork and sportsmanship. Every player will receive an official NFL reversible jersey and their own set of flags.

Fall Dates: Fridays from Aug. 27- Nov. 5

Location: All games will be played in Incline Village

Fee: \$150 per player, \$125 w/IVGID Pass.



Cabinet & Lighting Supply, a place where cabinet features and samples are plenty. From custom designed and made cabinets to fresh light fixtures all year around, find out why we're voted one of "The Best of Reno." If you can imagine it, our specialists can help make it happen.

www.cabinetandlighting.com

Visit us at 11355 S. Virginia Street | Reno, NV
Showroom Hours: Mon-Fri/8:30-5:00 | Sat/8:30-3:30





ADULT SPORTS

Adult sports leagues and programs are open to those who are age 18+. For more information, please call the Sports Office at 775.832.1322.

Adult Volleyball Leagues

Looking for some friendly competition? Here's your chance to test your skills and have some fun. Join other local volleyball enthusiasts and play in a great facility. Our leagues offer social opportunities and challenging competition for players of all abilities. These leagues are supervised and are self-officiated. All teams will play up to ten league games with the top four teams in each league advancing to the season ending playoffs.

Division: Recreational Coed 6 on 6

Fall Dates: Tuesdays from Oct. 5 - Dec. 14

Times: 6pm - 9pm

Fee: \$250/team

Location: Recreation Center Gym

Adult Coed Flag Football League

Our awesome adult flag football league is back for year two! Every Saturday morning come play some amazing coed flag football with your friends. Our 5 v 5 league is played on a small field where everyone is in the action!

Fall Dates: Saturday mornings from Aug. 28 - Nov. 6

Fee: \$250 per team

Location: All games will be played in Incline Village

Adult Basketball Open Gym Hours*

Tuesdays & Thursdays 12 - 2pm

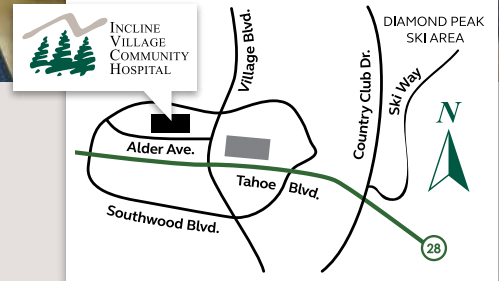
*Gym schedule is subject to change. Please call the Host Desk at 775.832.1300 to verify open gym hours.

Free Agent List: Anyone interested in participating in any of our adult sports programs should call the Parks & Recreation Department Sports Department at 775.832.1322. Contact information will be given to managers seeking players.



Open 7 Days a Week, 24 Hours a Day

Located in the heart of Incline Village, **Incline Village Community Hospital** offers year-round, 24/7 emergency care to the North Lake Tahoe area and a wide range of high-quality healthcare services.



- 24-Hour Emergency Care with Board Certified Physicians, Registered Nurses, and Medical Technicians
- Surgical Services
- Diagnostic Imaging and X-Ray, with state-of-the-art CT Scanner
- Incline Health Center, offering primary care, pediatrics, family medicine, orthopedics, cardiology, ear nose and throat, and behavioral health specialties, and primary care clinic with walk-in and same-day appointments
- Laboratory Services

- Physical Therapy and Medical Fitness
- Health, Wellness, and Community Education Programs
- Hospice and Home Health Services
- Charitable giving and volunteer opportunities available through the IVCH Foundation and Hospital Auxiliary

Your Community.
Your Hospital.  **INCLINE VILLAGE COMMUNITY HOSPITAL**

BUILDING YOUR DREAMS

CALIFORNIA & NEVADA

RUBICON BAY - TAHOE CITY - INCLINE VILLAGE



LARGE RENOVATIONS, ADDITIONS AND NEW HOMES
Reinventing and Rejuvenating your Old Tahoe to Mountain Modern Home





SENIOR PROGRAMS

Senior Transportation

The Senior Transportation Program is a collaborative effort provided by IVGID Senior Programs, Washoe County, NDOT and RTC. Services include regular transportation opportunities for shopping, errands, outings, and medical or personal appointments. This door-to-door, reliable, affordable service



Left to Right: Melissa Goodman, CSR; Tracie Chambers, CSR; Heather Shook, CSR; Larry Peyton, Agent; Michael Peyton, Agent; Stephanie Howat, CSR; Sarah Shulman, CSR/Office Manager; Tracy Peters, Administrative Assistant

PEYTON INSURANCE AGENCY LLC

775.831.6233 | mpeyton@farmersagent.com
 770 Northwood Boulevard #10
 Incline Village, NV 89451

<https://agents.farmers.com/nv/incline-village/michael-peyton>

Auto | Home | Commercial | Workers' Comp
 Life & Health | Bonds | & Much More!



NV LIC #935773 | CA LIC #0D72961

provides local seniors a way to get around, run errands, make appointments, and take care of business. Reservations are required. Please call the Transportation Hotline at 775.886.1020 and leave the requested information for local errands at least 24 hours in advance for the Wednesday and Friday services. Regular runs to Reno and Carson on Tuesdays is reinstated. The fee for regular Tuesday, Wednesday or Friday weekly transportation is \$5.

“On Demand” transportation is also available for other individual needs. \$35 per person includes a same-day round trip for errands, appointments, personal services, etc (additional fees apply after 3 hours). Airport transportation services, (drop-off or pick up), are \$45 per person.

Book “On Demand” transportation services at least 72 business hours in advance at 775-886-1020.

Transportation services may be subject to alteration or cancellation in extreme weather and are subject to driver and vehicle availability. Requested destinations are limited to Washoe County and adjacent communities (i.e. Carson City, Stateline, Truckee, and Kings Beach).

Conversation Café

Conversation Café is a drop-in forum hosted by the Senior Programs staff. Interact with people, share diverse views and a passion for engaging with others over interesting topics, local issues, and world news items. Candid discussions about selected topics elicit frank comments, and the dissemination of information, often with humorous anecdotes and interjections.

When: Thursdays, except holidays (no meeting Nov. 25), 10 - 11:15am.

Fee: FREE! A continental breakfast is provided for a small donation.

Incliners

“Incliners” is a community social group for locals aged 49+ years. Two monthly dinner events are held the 1st & 3rd Tuesdays of each month with seasonal themes and special events. Annual membership dues are \$20. Dinners include a no-host, 5:30pm happy hour with the meal served at 6:30pm. Reservations are required for catered dinners. Visit www.inclinerstahoe.com for current meeting themes, special event information, and membership applications.

Incline Village/Crystal Bay Veterans Club

Veterans, supporters and community members are always welcome to attend the meetings. Join this dynamic group for monthly lunch meetings with featured guest speakers. Participants enjoy involvement with special events and unique opportunities to honor and support local veterans, military service agencies, and special veteran support operations in the community, state, country and world. The IV/CB Veterans Club Mission: To promote the welfare of all veterans and their families.

Meetings are on the last Thursday of each month, 12 - 2pm, January - October* at the Chateau, in Incline Village.

* The August meeting is a BBQ in the backyard of Aspen Grove and there are no meetings held in November and December. Meetings resume the last Thursday of January.

Fee: \$30 Annual Membership dues includes all lunches.

55+ Hiking Series (Fall)

Keep hiking through September and October (maybe November) and stay in shape for upcoming snowshoe treks when the weather changes. Hike locations are outlined online and on flyers located in the foyer of the Recreation Center. Meet at the Recreation Center each Tuesday morning at 8:30am.. Bring lunch, water and sunscreen. (Hikes are weather dependent).

When: Tuesdays, 8:30am - 3pm*

Fee: \$14, \$10 w/IVGID pass

* Some hikes may take extra time depending on location and traffic.

Trips, Tours & Adventures

Join the fall fun and venture out! Travel to various destinations around Lake Tahoe and the surrounding areas. Visit places you've always wanted to see or see again. Check with IVGID Senior Programs for last minute trip additions. Trip ideas and requests are always welcome. Be on the look-out for new trips added to the line-up - watch for flyers and announcements.

Amador Winery Trip

Visit 4-5 different wineries. Enjoy the vineyards and tasting of a sampling from the 40+ wineries in the region. Additional tasting fees may apply at some venues. We'll grab a no host lunch for a picnic at one of the sites.

Date: Friday, Sept 10

Time: 8:30am - 6pm.

Fee: \$39, \$32 w/IVGID Pass (+ no host lunch).

Fall Shopping Spree

Gear up for fall. New fall wardrobe pieces, early holiday shopping, or just get out of town for the day. Ride to the Galleria in Roseville for browsing shops, partaking in some retail therapy, or just have lunch with your partners in crime.

Date: Monday, Oct 11

Time: 8:30am - 5pm

Fee: \$39, \$32 w/IVGID Pass (+ no host lunch).

Apple Hill

Join us for pre-holiday fun. Enjoy vendors, holiday gift shopping, apple products, and great food.

Date: Wednesday, November 17

Time: 9am - 4pm.

Fee: \$39, \$32 w/IVGID Pass (+ no host lunch).

Facial Rejuvenation

Transform Your Skin

Increase Collagen, Reduce Wrinkles, Shrink Pore Size, Decrease Acne Scars
Even Skin Tone, Improve Texture



Pamela Murphy Acupuncture

907 Tahoe Blvd #5, Incline Village, NV

(775) 799-5479 | www.pammurphyac.com

IVGID SENIOR PROGRAMS

Nevada City Victorian Christmas

Take part in this Nevada City holiday tradition with carols, gift shopping, a variety of vendors, and plenty of cheer.

Date: Sunday, December 5

Time: 11am - 6pm

Fee: \$39, \$32 w/IVGID Pass (+ no host lunch)

Dashing Through the Snow 55+ Snowshoe Hikes & Lunch

Trekkers of all abilities are welcome to join IVGID Senior Programs for weekly light to moderate level snowshoe hikes at various locations throughout the beautiful North Tahoe area. Following the hikes, relax and socialize with fellow snowshoers and enjoy a delicious lunch at a local eating establishment. Hikes are subject to current weather conditions. Bring your own gear.

When: Tuesdays, 10am – 2pm (November* – March)

Fee: \$21, \$17 w/IVGID pass. Fee includes staff guides, transportation & lunch.

** November dates are weather dependent - snow is required.*

55+ Ski/Snowboard Clinics At Diamond Peak

Don't miss this great opportunity to hone your skills, master safe skiing, and meet fellow skiers at Diamond Peak. PSIA Certified Instructors provide intermediate (Lakeview), and advanced (Crystal) level instruction in these weekly ski clinics. Novice skiers are welcome to attend, but should start with a lesson from Diamond Peak Ski School (group or private) until they can reasonably and comfortably get down a blue run (intermediate terrain) to join the program.

Instruction is designed to help skiers improve, adjust, or modify techniques plus encourage skills and habits that support lifelong skiing. Re-entry skiers are welcome! Learn about the latest equipment and skiing technology. Meet upstairs in the Loft Bar at Diamond Peak's Main Lodge. Skiers must have a Diamond Peak day pass or season pass. Bring your own equipment - rental equipment is available for a fee.

Dates: Wednesdays, January 5 - April 13 (No clinic the week of the President's Day holiday)

Time: 9:30am - 12pm

Fees: \$250/10 weeks or \$200/10 weeks; \$150/5 weeks or \$125/5 weeks w/IVGID pass; Drop-in rate \$45 per day or \$35 w/IVGID pass. YOU choose the weeks you want to attend!



AIM FOR THE FUTURE

The #1 College Prep Private School in the Reno Area Breaks Ground on
New Student Activity Center — Coming 2022

Grades 3–12 | Applications Open Now for 2022–2023

**SAGE
RIDGE**
S C H O O L



LEARN MORE
about our programs, enrollment
and Campaign
sageridge.org/AIM



EVENTS YOU WON'T WANT TO MISS

Trail of Treats and Terror

An event to provide a fun Halloween experience to the Incline Village/Crystal Bay community. Travel through the haunted forest, snap a family photo, and enjoy some spooky fun!

Date: Thursday, October 28

Location: Village Green & Fitness Trails (960 Lakeshore Blvd.)

Brunch with Santa

Join in the fun for a festive Brunch with Santa, Mrs. Claus and the elves. Held at The Chateau at Incline Village, this family event features many fun activities including a delicious brunch, a photo with Santa and Mrs. Claus and much more. This event is a collaboration with Tahoe Family Solutions.

Date: Saturday, December 11

Time: Multiple seatings

Location: The Chateau at Incline Village (955 Fairway Blvd.)

Santa Stop Drive Through

Join the holiday fun at this drive-through event at The Chateau. See Santa and Mrs. Claus, and bring along your pre-written letter for Santa to drop in the North Pole Express Mailbox!

Date: Sunday, December 12

Location: The Chateau at Incline Village (955 Fairway Blvd.)



Recreation Center Hours

(subject to change, please see inclinerecreation.com for current hours)

Monday - Friday: 6am – 7pm
Saturday & Sunday: 7am – 5pm

Holiday hours vary,
please call 775.832.1300

ABOUT THE INCLINE VILLAGE RECREATION CENTER

The Incline Village Recreation Center is among Lake Tahoe's finest fitness and recreation centers: a 37,000 square foot, first-class complex offering activities for all ages. Check out the complete selection of programs, activities and equipment for you and your family to enjoy throughout the year.

Recreation Center Memberships & Rates

The Incline Village Recreation Center offers memberships at affordable prices, with discounts offered for IVGID Picture Pass holders. You can pay annually or monthly to receive an additional discount. Rates available for singles, couples, families, seniors and students (ages 6-23). Please see inclinerecreation.com for rates, special offers, and COVID-19 restrictions.

Corporate Membership Program:

Keep your company's greatest assets (your employees) happy and healthy with a corporate membership. Research proves a healthy employee is a more productive employee. Check out corporate rates online at

inclinerecreation.com, stop by the Host Desk, or call 775.832.1300.

Cardiovascular Room

We offer 30 industry recognized cardiovascular machines including: LifeFitness Powermill stepper, elliptical cross-trainers and bikes, Precor elliptical cross-trainers, treadmills and recumbent bikes; Matrix treadmills and stepper, SciFit upper body ergometer and recumbent elliptical, a Versaclimber and a Concept II Rower. Most cardiovascular fitness equipment has a personal television or is connected to the Broadcast Vision Group Cardio Theater System.

Strength Area

This space includes individual Cybex Eagle and Matrix Strength Circuit machines, a LifeFitness Dual Pulley system and Synergy Strength system with multiple stations, Free Motion Squat machine, dumbbells up to 100 pounds, several fixed barbells, three flat bench stations and a variety of small equipment for resistance, balance, core, flexibility and agility training. Fitness equipment is maintained and serviced regularly.

Group and Water Fitness Classes

42 weekly group fitness classes are offered including: Cardio Cycle, Yoga, Zumba, Cardio/Strength, HIIT, Strength Conditioning, Flexibility/Balance/Core, TRX Blast, 55+ Fitness and Yoga, plus Liquid Cardio and Combo (deep & shallow water workout).

Lap Swim and Gymnasium use

Call 775.831.1300 or pick-up a pool and/or Gym schedule at the Rec Center.

Snack Bar/Pro Shop

Located in the main lobby, the Snack Bar and Pro Shop are your stops for disc golf sets, yoga mats, seasonal logo clothing, headphones, swim wear, goggles, ear plugs, socks, energy bars, nuts, sports drinks, water, various drinks, and snacks.

Kid Zone

This service is currently unavailable. Please check our website for any updates.

Totally Active (Ages 6-17)

The Totally Active program is modified and limited at this time. Call ahead for COVID-19 restrictions, gymnasium and pool schedules. Youth (ages 6-13) must be supervised by a parent or adult age 18 years or older. Totally Active participants can use the gymnasium to practice a sport and/or workout, and use the pool to swim laps. Free swim is unavailable at this time. Youth (ages 14-17), may be unsupervised for the above activities. To use fitness equipment in the cardio/strength workout area, users must be at least 12 years old, and trained by a staff member.

Daily: 12pm - 5pm; \$5/person



RECREATION CENTER UPDATE

Ready to get back to the gym? Ready to sweat somewhere other than your living room? Experts say that exercise can boost one's immune system.

If you took an extended break from the gym during the pandemic, and have noticed you've lost some muscle or gained a few pounds as a result, you're not alone. The Incline Village Recreation Center welcomes all temporary and full-membership users, as well as drop-in visitors, back to the facility. COVID-19 restrictions apply.

If you're not fully vaccinated, or have a health condition and have questions about what's safe for you, start by talking to your doctor. When you have the green light, the Incline Village Recreation Center is here for you. You'll find exercise opportunities to shore up the immune system, maintain an efficient cardiovascular system, and build muscle mass and restore balance. See you at the Rec. Center!

Pandora Bahlman

Pandora Bahlman,
Recreation Center Manager



Tahoe Adventure Company

Inspiring
High Sierra Adventures

- Kayak & SUP Tours
 - Mountain Bike Tours
 - Guided Hikes
 - Multisport Adventures
 - Team Building
 - Group & Corp Outings
 - Kayak & SUP Rentals
- 7010 N. Lake Blvd. Tahoe Vista

TahoeAdventureCompany.com

530.913.9212



SUMMER CAMPS & SPORTS





Parks & Rec



From the Incline Village Skate Park to the beaches, golf course, tennis and basketball courts, ball fields and soccer fields, IVGID's summer camps and sports have generated lots of fun, new skills and new friendships. Check out the fall lineup of sports and programs at inclinerecreation.com and get involved today! All photos by Jake Pollock



HEALTHY STREAMS EQUAL FISH

Over the past 15 years (20 if you count seasonal employment) in my official capacity as a regional fisheries biologist there are a handful of things that I have come to believe as absolute truths. Paramount of these truths is that healthy streams and riparian environments lead to healthy and productive fisheries. An area that is trending toward exemplifying a healthy stream and riparian environment is the Third Creek system that originates high above the Tahoe Basin, makes its way down through the populated areas of Incline Village, and eventually terminates into Lake Tahoe.

Unbeknownst to many in the area, Third Creek is an important stream to multiple species of fish that inhabit Lake Tahoe but rely on the streams around the basin to carry out their life cycle and spawn on an annual basis. While monitoring Third Creek over the past dozen or more years there has been a marked increase in the number of most species utilizing the streams during their respective spawning periods. While there are several environmental factors influencing these increases, the importance of the system health and water quality in Third Creek can not be understated.

The community and several individuals have worked to improve the system through restoration practices, stream environmental protection zones, and a general awareness of the importance of a healthy environment. Those efforts have translated to an ever improving and diverse system that may, one day, allow for the native Lahontan Cutthroat

Trout to return to some of its historic spawning grounds in a limited capacity.

Aside from the occasional physical litter (improperly disposed of pet waste bags and other small eyesores) the Third Creek water quality has improved from an unimpressive system to a level that is allowing for sensitive species of fish to persist, spawn, and rear juveniles year around. The system is monitored by several agencies and groups and by all indications is trending in the right direction.

The work done by all to achieve this should be commended. Continuing to value the stream and working to improve conditions further will not only benefit the fish and species that rely on the system but the community. Incline Village should be proud of Third Creek and the emphasis the community has placed on the stream. Third Creek's rebounding fish population is a testament to the success of the restoration projects.

ABOUT THE THIRD CREEK RESTORATION PROJECT

The Third and Incline Creek watershed was Nevada's highest priority restoration project in Lake Tahoe. It contributed more fine sediment that damaged the clarity of Lake Tahoe than any other watershed in Nevada. The first two phases of this collaborative inter-agency project were completed in 2009 and 2010 by the Incline Village General Improvement District (IVGID), the US Army Corps of Engineers, and the Nevada Division of State Lands. Portions of Third Creek were restored, culverts were replaced, and new bridges were built.

The final phase included stream restoration improvements on Third Creek from Lakeshore Blvd. to Lake Tahoe, and on Third and Incline Creeks from Incline Way to State Route 28. To allow for safe, stabilized foot traffic across both creeks, pedestrian bridges and stairs were included in the project design. The project has significantly improved water quality, fish passage, and provided a recreational amenity in the heart of Incline Village.

Travis Hawks is the Regional Fisheries Biologist with the Nevada Department of Wildlife, a partner with IVGID in environmental stewardship.

LAKE TAHOE | INCLINE VILLAGE, NEVADA



PANORAMIC LAKE VIEWS

Enjoy panoramic lake views from every level in this low-elevation Lake Tahoe home, in Incline Village, Nevada. Spanning almost 1/2 acre, meticulous grounds greet you on this street-to-street lot. Wood-encased steel beams lift high ceilings of magnificently designed and fully furnished home with style. Private house manager/au pair quarters offer separate entry. The second master suite accommodates main level living, and an elevator moves through each level. Home offices inspire working from home with lake views. Living and entertaining spaces flow from grand living room to movie theater, family/game room with bar, pool table, card table, and sauna. Radiant heated decks invite a BBQ and relaxation in a hot tub under the stars. Backyard oasis beckons with custom water features, fire pit, and bocce ball/corn hole courts. Heated drive, six fireplaces, generator, two new Lochinvar boilers, and a 4-car garage welcome you home during Tahoe winters. **\$13,000,000**

[Visit LivingTahoe.com](https://www.livingtahoe.com)

[Experience video tour](#) • [Walk 3D floor plans](#) • [Browse 2D floor plans](#) • [View additional photos](#)



TANYA SOULE

REALTOR® | CLHMS® | SRS® | ABR® | RSPS®
LUXURY HOME MARKETING SPECIALIST
INCLINE VILLAGE REAL ESTATE. ELEVATED.
NV S.0170786

775 690 2341

tanya@LivingTahoe.com | [LivingTahoe.com](https://www.livingtahoe.com)

Incline Village office: 917 Tahoe Boulevard

CHASE
INTERNATIONAL
LUXURY LEADER



TENNIS & PICKLEBALL UPDATES

We look forward to hitting the courts with you this fall. Our USPTA certified Teaching Pros are available for private and semi-private lessons.

The Incline Village Tennis & Pickleball Center, located next to the Recreation Center, offers 8 tennis courts and 12 pickleball courts in a picturesque alpine setting along a year-round creek. Tennis rackets, pickleball paddles and other products are available in the Pro Shop.

Daily Tennis Clinic

Days: Monday - Saturday
Time: 9am - 10am

Intro Adult Clinics (2.0 - 3.0)

Days: Monday, Wednesday, Saturday (through Sept.)
Time: 10am - 11am

Court Reservations
Call 775.832.1235 or stop by the Pro Shop to reserve your time. 6-pack court fee punch cards are available for both peak and afternoon times.



ManageHome
SIMPLE.LOCAL.RELIABLE.READY



Is your Short Term Rental (STR) Compliant?
ManageHome is the only locally owned firm that offers comprehensive solutions for STR compliance for DIY homeowners.

FREE QUOTE



Avoid STR fines for non-compliance!



12177 Business Park Dr. Ste. 2-125
Truckee, CA 96161



Tennis & Pickleball Center

Ladies Doubles Clinic (3.0+)

Come out for clinic and match plays with coaching, and finish up with a beverage and good conversation. Reservations required.

Days: Thursdays, 4pm - 5:30pm

Fees: \$35, \$30 w/IVGID Picture Pass

Extreme Drill and Play (4.0+)

High-paced drill for the top player, conditioning drills and points, serve and return practice and match play.

Days: Fridays, 10am - 12pm

Fees: \$45, \$40 w/IVGID Picture Pass

Drop-In Pickleball Play

Everyone is welcome but first-time players must participate in an Introduction to Pickleball Clinic before participating in drop-in play. Players will rotate into different games with others. Please use the paddle boxes to secure your place in the rotation. Registration is not required but all players must check in at the Pro Shop, even Tennis & Pickleball Center Membership Pass holders.

Days: Daily

Time: 9am - 12pm



Introduction to Pickleball Clinics

Have you always wanted to play but don't know where to begin? We can help you with the basics to get you started. New players must attend a clinic before joining drop-in play.

Days: Mondays & Saturdays

Time: 11:15am - 12:15pm

ADVANCED & *Compassionate* CANCER CARE

Leading the Way in Rural Cancer Treatment

Our goal is to provide the best rural cancer treatment in the country, and to do it in the most honest, supportive and compassionate way we know how.

- Highly-Skilled Care
- Advanced Technology and Treatments
- Extensive Support Programs

Offering Varian TrueBeam® Radiation Therapy



GENE UPSHAW
MEMORIAL
TAHOE FOREST
CANCER CENTER

10121 Pine Avenue
Truckee, CA

(530) 582-6450

tahoecancercenter.com





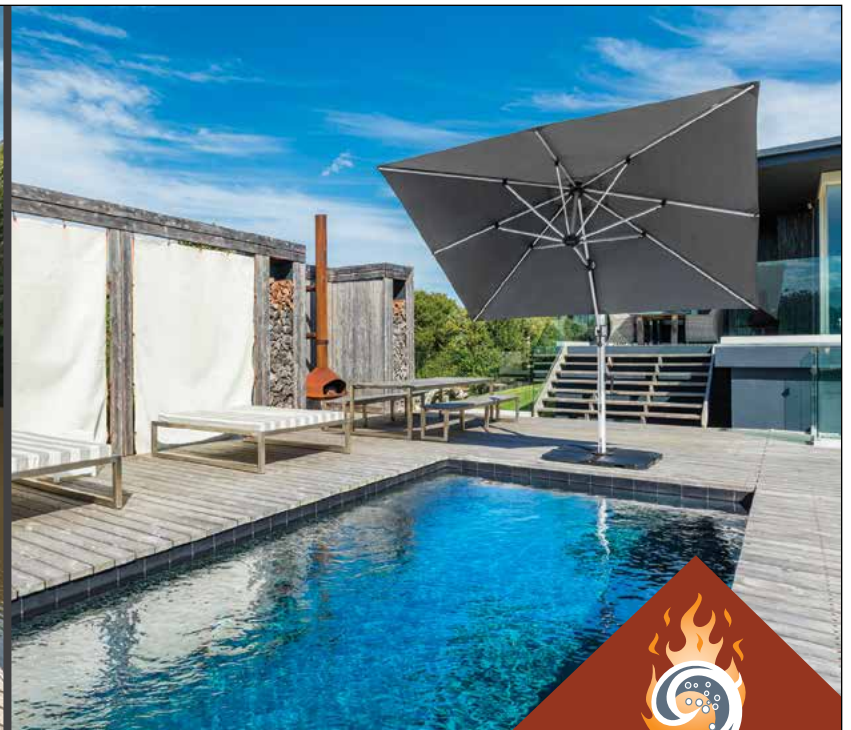
STAFF SPOTLIGHT

Basia Phillips - Tennis & Pickleball Center Supervisor

If you've spent any time at the Incline Village Tennis & Pickleball Center over the past few seasons, you've inevitably been welcomed by Basia - the always-smiling Tennis & Pickleball Center Supervisor. We asked Basia what she loves about her job and her life in the area...

Living, working and playing in Lake Tahoe is the perfect recipe for those activities that I love to do. Being very fortunate to have had access to a variety of sports in my life, many of us move to this area to do what we love. The cycle of life for me begins with the melting snow in spring that signals the start to a new tennis season, only to end with the first snow that points to the start to winter sports.

Tennis, alpine skiing, pickleball, snowshoeing, long hikes and cross-county skiing are a smorgasbord of physical and mental outlets that both my work life and personal time allow me to pursue. All of this is enriched with new friendships, seasonal reunions, competitive rivalries, enjoyable mixers and lots of giggles and chuckles along the way as I welcome our members daily at the Tennis & Pickleball Center.



EXCEPTIONAL SHADE FOR EVERY OUTDOOR SPACE.

Let our team help you select the perfect umbrella for your mountain home.



Main Showroom 11403 Brockway Road, Truckee, CA | 530.587.6681 | MountainHomeCenter.com



**MOUNTAIN
HOME
CENTER**



Tennis & Pickleball Center



TENNIS TIP: THE SPIN GAME

Almost all sports involving a ball use spin to control the ball. Baseball has the curve and slider, golf the slice and draw, soccer the “bend it like Beckham” shot to the goal or pass. Even Pickleball now has the slice for dinks or topspin/side spin for a number of shots.

Tennis is no exception and actually uses more spins than a lot of the other sports to control the ball, especially when serving. Here are the basic spins and their uses:

Topspin - the most common spin for tennis and taught to all kids learning tennis for the first time. It is the most important of all the spins since it enables the player to hit the ball hard and keep the ball in the court. Every intermediate and advanced player uses topspin for their groundstrokes, forehand and backhands. The player brushes up and out on the ball which causes the ball to rotate and drop into the court. Advanced players and pros swing as hard as they want knowing the ball will drop into the court due to the spin.

Slice - also called underspin, is used for a variety of strokes. Many players have a slice backhand which means they hit the ball with the bottom or leading edge of the racket to cause back spin. Volleys, lobs, drop shots and other special shots use slice to control the ball better for accuracy.

Serve / Spins - serves for advanced players use various types of spins, mostly for the second serve. Slice serves cause the ball to really curve just like a baseball, whereas kick serves clear the net and drop in the box then bounce high in the air. Both of these serves have lots of spin that causes the ball to move and make them hard to return.

Other ways to create spin are through your equipment and strings. Some rackets are designed to create more spin than other rackets and have wider spaces between the strings. This causes more grip or grab on the ball when struck.

Strings also play a huge role, mostly for the intermediate and advanced players. A multifilament string stretches more and doesn't grab the ball whereas poly strings are thick and rigid and really don't stretch at all, grabbing the ball better for spin.

For more details on all the above, visit the Incline Village Tennis & Pickleball Center and speak to our USPTA-certified Professional Tennis Instructors for instruction on not only how to hit spin, but what would be the best racket and string for your type of game.

Randy Berg is the Head Tennis Pro at the Incline Village Tennis & Pickleball Center.

EFA

ARCHITECTURE
+
ENGINEERING
+
INTERIOR DESIGN
+
TRPA CONSULTING

www.elisefell.com

Elise Fell & Associates

775-833-3388 NV, CA & HI LICENSED



Tennis & Pickleball Center



PICKLEBALL TIP: THE LOB— LOVE IT OR LOSE IT

The lob is a low percentage shot in pickleball. That’s because it is difficult to execute and so much can go wrong. Hitting a lob perfectly is like hitting a golf ball that must clear a tree in front of you but land on the other side of the tree in a small

grassy area before a creek. If you mess it up, watch out! You’ve just given your opponents a chance to slam a winner at your feet.

Sometimes you hit a lob because you are in trouble and looking for a way to buy some time. Other times you may think this is the smart shot to try. The best time to lob is when your opponents are both at the kitchen line, they are under 5 feet tall, and they are hot, tired and not able to move quickly. But how often does that happen?

A 6-foot tall opponent can reach his paddle about 9 feet without jumping. Add another foot or more if he does an Air Jordan. That’s a high hurdle to clear. If the opponent is at the kitchen line, your landing area is less than 15 feet behind him. Put him mid-court and your landing strip just shrunk to about 6 feet. And, the higher your lob shot, the longer it takes to descend, giving an agile opponent a good chance to get to the baseline for a tricky return.

Think of the risk/reward tradeoff. If you don’t hit the ball high enough, most opponents will slam a winner back at you. If you overhit, the ball will go out of bounds. Neither result helps you get ahead.

If you need to try a lob shot, open your paddle face in the same manner a wedge golf club has an open face. Move your paddle from low to high and extend your paddle after you connect with the ball for follow through. The open paddle face gets the ball up and the follow through helps control the landing. Practice this shot for greater consistency.

Bev Keil is the author of the Incline Pickleball newsletter and the book “Pickleball: The Bitchin’ Kitchen and Dinks For All” which is available for sale in the Incline Village Tennis & Pickleball Center Pro Shop.

Transformational Growth for Entrepreneurs.

Entrepreneurs Organization | Join Today
For more information email admin@eort.org

 **Reno Tahoe** eonetnetwork.org



LATE SUMMER GOLF SEASON IS UPON US

We made it through the peak of the summer golf season (July and August) and now we have some great fall golf to look forward to. The golf season this year got off to a great start, due mainly to the masterful job Jeff Clouthier and his staff did preparing both courses for the season. All 18 greens and the putting green opened at the Championship Course with no winter damage. The Mountain Course also had no ice damage and very minimal snow mold.

Because of the incredible condition of both courses, golf is experiencing higher than normal play (Championship Course 24% higher than last May/June and Mountain

Course 27% higher than last May/June) and we expect this to continue throughout the season.

Thank you to all the golfers who have been using cancelgolf@ivgid.org to cancel their unneeded tee times. Because of your diligence in canceling tee times, we have been able to fill almost all the cancellations with paying customers. The last thing we want to do is charge individuals who do not call or show-up for their tee time.

As a reminder, our cancellation policy is: Please call or email cancelgolf@ivgid.org to cancel tee time reservations at least 72 hours prior to your tee time for a full refund. 50% of

Kelly Brothers
Painting
INC.

BOOK NOW

EXTERIOR

PAINTING & STAINING

KellyBrothersPainting.com 530.550.0806
Bonded & Insured CA LIC #822843 | NV LIC #68238

What happens in the Photo Booth stays in the Photo booth

Unless you share the photos

Weddings · Parties
School Events
Corporate Events

Call: 775-846-3535

CARSON TAHOE RENO
CTR
PHOTO BOOTH

mike@ctrphotobooth.com
www.ctrphotobooth.com

INCLINE VILLAGE GOLF

green fees will be charged for cancellations made between 72 - 24 hours of tee time. Within 24 hours of tee time, full green fees will be charged for all golfers in your party.

The Resident Golf Associations have been experiencing great turnouts for their events, and as the golf season moves along, they have many more golf and social events coming up.

Chef Bill and his staff are working hard every day to keep up with the demand at all of our Food and Beverage outlets. We ask for your patience as they navigate their way through what has already been a difficult and challenging season of finding enough workers to continue our operations. Some venues and times of service may become limited so that our staff can adequately provide the best product and services possible.

Please note on your calendars the pending closure of the front nine at the Mountain Course on September 16 due to the golf cart path replacement project. The back nine will remain open as long as the weather permits, and we plan on staying open one week longer than normal.

Also, don't forget we have specialists for Ping, Titleist, Callaway, Mizuno and Cobra on our staff for all your custom club fitting needs. Just call the Golf Shop to set up a fitting time and we will be more than happy to accommodate.



Keep it Simple,

Darren Howard

Darren Howard,
Director of Golf
and Community Services

Limited Operations at The Grille

Due to extreme staffing shortages, menu and hours of operation may fluctuate and The Grille may experience periodic closures. Please visit The Grille Facebook page for announcements.

YOUR LUTRON AND SAVANT HOME AUTOMATION EXPERT



VERDI ENERGY[®]

NV LICENSE #0081880

www.verdienergyinc.com | 775.391.3111

 LUTRON[®] SAVANT



WATCH ON YOUTUBE
bit.ly/ivclubfitting

GOLF CLUB FITTING Did you know that Neil Gunn and the other PGA Professionals at the Incline Village Golf Academy offer professional club fitting services? Brands include TaylorMade, Callaway, PING, Titleist, Cobra and Mizuno. Check out the video on your phone or computer for more details.

Covering You and What You Value For Over 40 Years.

So thankful for the trust and dedication you have placed in us and the meaningful relationships we have formed.

Call Menath Insurance.

800-756-6507 | 775-831-3132
Local Experts | National Reach

Personal, Business & Health

menath.com



**MENATH
INSURANCE**
AN ALERA GROUP COMPANY

Serving Lake Tahoe Since 1981



NINE & WINE 2021

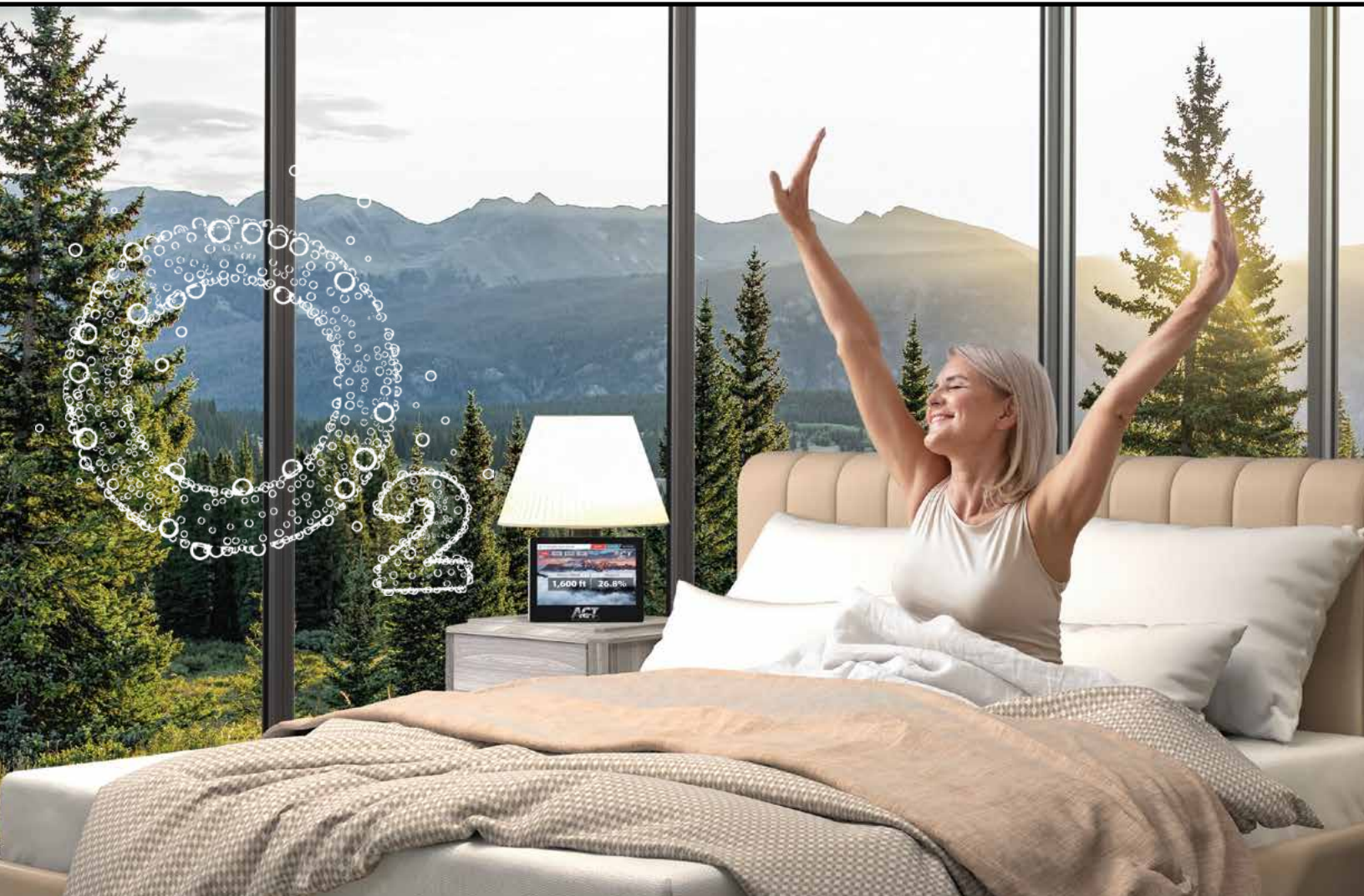
An incredibly fun and social event for golfers of all abilities, Nine & Wine golf and wine tastings are a great way to meet some new friends, find a new favorite wine, and enjoy the gorgeous new outdoor deck at the Mountain Golf Course. We hope to see you next season for another great season of Nine & Wines.



Ahhhhh... Oxygen!™

What a difference a good night's sleep makes!

ACT's award-winning technology lowers your effective altitude by as much as 7,000 feet. Let us oxygenate your mountain home for better sleep, more energy, and no altitude sickness.



Imagine how you'll feel tomorrow after sleeping in your oxygenated room tonight.™



For more information about what oxygenating your home can do for you, call:
(970) 528.1300 or visit ACT-O2.com



ACT is the world leader in altitude simulation. Clients include: Harvard Medical School • Mayo Clinic • University of Colorado School of Medicine • Federal Aviation Administration • U.S. Naval Air Systems Command • Olympic Training Centers in 14 countries • More than 50 medical schools and universities on five continents



Harvard Medical School



Mayo Clinic



University of Colorado



US Naval Air Systems Command



Nike



Federal Aviation Administration



Smithsonian



US Air Force Academy



Olympic Training Centers in 14 Countries

BURNT CEDAR SWIMMING POOL IMPROVEMENTS UPDATE

This project is a 2021 Capital Improvement Project and Board of Trustees Priority Project, which will reconstruct the two (2) pools (full size and toddler) that were built in 1968 at Burnt Cedar Beach. The renovations will provide a modern facility for residents to enjoy for many years to come. The project includes layout modifications, reorienting the pools, offering enhanced family-oriented amenities, providing a raised terrace for dining, and a new pedestrian path that connects the west parking area to the sandy beach and picnic areas.

The pool and pool deck have been and will be closed for the entire 2021 season, but residents can still enjoy use of the beach, picnic areas, and bar amenities at the site during construction.

Design of the pool was completed in early 2021. The design partners include TSK Architects, Aquatics Design Group, RCI, Inc., Design Workshop, Nelson-Wilcox Structural Engineers and MSA, Inc. CORE West, Inc. was selected as the Construction Manager at Risk (CMAR) and mobilized to the site to start work on May 3, 2021. The construction is scheduled to be completed by June 2022, just in time for residents to enjoy the updated facility for the summer season.

CORE West, Inc. had a lot of preparation work before any construction could begin. They installed all required temporary BMPs (Best Management Practices), altered the parking lot area to allow easy and safe access to the beach and picnic areas for use during construction, and then began demolition of the pool deck, pool, and toddler pool.

As you can imagine, some large boulders were encountered during the excavation for the new pool. There were a couple of days when the rock breaking operation was rather loud for the people enjoying the beach, and we are all thankful that work is complete! The new pool will be wider to accommodate an additional lane, making it a six lane pool. The orientation of the pool has been modified to provide incredible views of the lake. Kids are sure to spend hours enjoying the pool slide, and the wading pool will be very popular with its new fun water feature.

We are excited for residents to come enjoy this upgraded facility in 2022.



Before Construction



Rock Hammer



Pool Concrete Removal



Rock Pile



Pool Excavation



Old Pool Fill Compaction



New Pool Forms



Pool Piping



Shotcrete



Wading Pool After Demo



Landscape Area Before



Landscape Area After



STAFF SPOTLIGHT

Kate Nelson - Engineering Manager

IVGID is truly excited to have Kate Nelson join the District as the Engineering Manager.

Kate was born and raised in Reno and is excited to work in one of the most beautiful places on earth. She graduated from

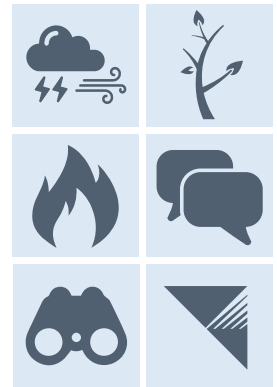
the University of Nevada, Reno with a Bachelor of Science degree in Civil Engineering, with a minor in Chemistry. She is both a licensed Civil Engineer and State Water Rights Surveyor. Kate has over 22 years of experience in water and wastewater design and project management.

Kate and her husband Mike enjoy spending time outdoors skiing, fishing, and camping. They have raised three boys who have set up their families relatively close to Reno. Kate is looking forward to teaching her grandchildren to ski at Diamond Peak this year.

Shutting Off Power
For Safety



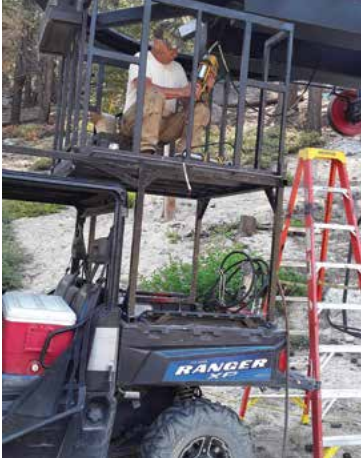
PUBLIC SAFETY OUTAGE MANAGEMENT



Be Prepared for Wildfire Season

Safety is our priority, especially during wildfire season. PSOM is a key measure of defense to protect our customers from the risk of wildfires. Visit [nvenergy.com/psom](https://www.nvenergy.com/psom) to learn more and sign up for outage alerts.





SUMMER ON THE SLOPES

If you've ever done the popular easy hike to Snowflake Lodge during the summertime (1.2 miles each way up a fairly mellow fire road), you may have witnessed our summertime maintenance crews out working on the lifts, prepping the snowmaking system, clearing brush, or one of the myriad other tasks that get done during the offseason to prepare the mountain for ski season. *Photos by Kristeen Humbert*



Check out our **NEW** expanded showroom in the Village Center!



PIROUETTE-WINDOWSHADINGS

Call for a **FREE** in home consultation!

(775) 831-2204

www.sierraverdegroupp.com

LOWER VILLAGE CENTER

**797 Southwood Blvd.
Incline Village, NV**



Home Design Center



JOIN THE SEASON PASS FAMILY

Diamond Peak season passes for the 2021-22 season are currently on sale at preseason rates through October 31, 2021. Season passes come with plenty of perks like on-mountain discounts, discounts on lift tickets for friends, bonus tickets to partner resorts and more. If you plan to ski multiple times (and don't want to wait in the ticket line), a season pass is the way to go.

Don't just take our word for it though, ask your friends and other locals who choose to support their community-owned

resort and make Diamond Peak their home mountain. Below are just some of the reasons our pass holders choose to buy a Diamond Peak season pass:

"This is a gem of a ski resort: it has a true neighborhood feel as it is mostly frequented by locals, who know the terrain like the back of their hand, many of them having grown up skiing the slopes here. I love that on a usual day you can ski right up to a chair and there is usually no wait. Also, the folks who work here are super friendly. Having said that, it can get busier on holidays and some weekends, but the lines are usually not longer than 15 minutes." – Gen M. (Yelp review)

"Well after skiing 89 days so far this year what more can I ask for?? Greatest ski year of my LIFE!!!" – Survey Taker

"We've skied Diamond Peak with my now 6.5 year old twins for the past three seasons (we had season passes for the past two seasons). As an avid skier pre-kids, I had always stuck to the bigger

Continued on page 40

PAIN RELIEF

Acupuncture, Cupping, E-Stim, Herbs

Relieve Pain Caused By:

Injury - Arthritis - Peripheral Neuropathy

Muscle Soreness - Menstrual Cramps

Sciatica - Pinched Nerve

CRPS - Anxiety - Depression



Pamela Murphy Acupuncture

907 Tahoe Blvd #5, Incline Village, NV

(775) 799-5479 | www.pammurphyac.com



HOLM
Interior & Exterior Work
We make your home better.

775.298.2727 | HolmConstructionTahoe.com

NV #81893
CA #941072

Tahoe resorts and only discovered Diamond Peak when my kids were ready to ski. This really is an ideal place for families with young children. The runs are short but just right for the stamina of the younger kids. They do have a nice progression of runs (greens, blues, blacks) accessed off lifts nearby to each other, so it's easy to find your group again if you decide to separate for a run or two. The view of Lake Tahoe on the blue run off Crystal Express is amazing (definitely among the best of any Tahoe resort)...” – Michelle J (Yelp review)

“Diamond Peak is the best. We honestly kind of regret getting the Epic pass because we enjoy DP so much and spend most of our days there. The staff is always so nice, the slopes are great, and the food is even better and Tony is our favorite!” – Survey Taker

If you have not already hopped online to purchase a new 2021-22 season pass or renew your existing pass, we hope you do so soon. We always look forward to welcoming back our loyal pass holders and inviting new members to the pass holder family.

TIPS FOR PASSHOLDERS: LOAD PASSCASH ONTO YOUR PASS

Did you know that you could load funds onto your Diamond Peak season pass to use at the resort? PassCash is a convenient option for children or those who don't like to carry their credit card with them on the slopes.

How to add PassCash: Login to the online store using the same account you used to purchase your season pass. Click “My Account” in the top right then select “Stored Value (aka PassCash).” Type in the amount you want to add to each family member and then click “Add to Cart” to proceed to the checkout process.

How to use PassCash: Just let our cashiers know that you would like to use your PassCash when you are paying for food, drinks and other products at the resort. You will have to scan your pass at the register so make sure you have it handy at checkout.

Purchase 2021-21 season passes online at DiamondPeak.com.



ORLANDO
ENTERPRISES TAHOE, INC.
(775) 831-5567
(530) 546-5567
Building Quality Homes Since 1978
-Design Build-
-Competitive Pricing-
NV Lic # 0019856 - CA Lic # 876583
www.orlandoenterprises.com



OPEN HOUSE
OCTOBER 23
#1 Private School in Northern Nevada
-serving Grades 3-12.
Where scholarship cultivates community.



LEARN MORE & RSVP TODAY
sageridge.org/openhouse

SCHOLARSHIP • RESPECT • INTEGRITY • COURAGE • COMMUNITY



This past spring, a group of individuals, businessmen, and women launched the Incline Village Crystal Bay Community & Business Association (IVCBA). From day one, the IVCBA has not stopped its energetic passion and persistence from building community by supporting our local businesses, nonprofit organizations, and co-hosting seasonal community events for all to enjoy. So what have we been up to?

Everyone loved the parade, and then some

This past July 4th holiday we saw the first success of the fruits of everyone’s labor as we joined hands with numerous local agencies to celebrate our Independence in grand style. The Local Heroes Parade, in conjunction with the Rotary Club of Tahoe-Incline brought back the camaraderie in our community which is exactly what IVCBA is all about. Also, cheers to the kids in the community who kicked-off the fanfare and participated in the Kids Parade organized by the Incline Village General Improvement District.

After the parade, the Washoe County Sheriff’s “Meet & Greet” at Sierra Nevada University was a grand success as well. We are thrilled to have a fully staffed team watching out over our community once again.

A big shout out goes to the Veterans Club and the North Lake Tahoe Fire Prevention District for resuming their annual pancake breakfasts.

Be “In the Know” 24/7

Throughout the rest of 2021, we encourage you to click into our website at IVCBA.org. Within the website you will find themed and detailed pages that overflow with information, directions, and details to help you live a full life here on Lake Tahoe’s Nevada side of the North Shore. Also on the IVCBA.org website is an extensive presentation about all the businesses and services that are here for you.

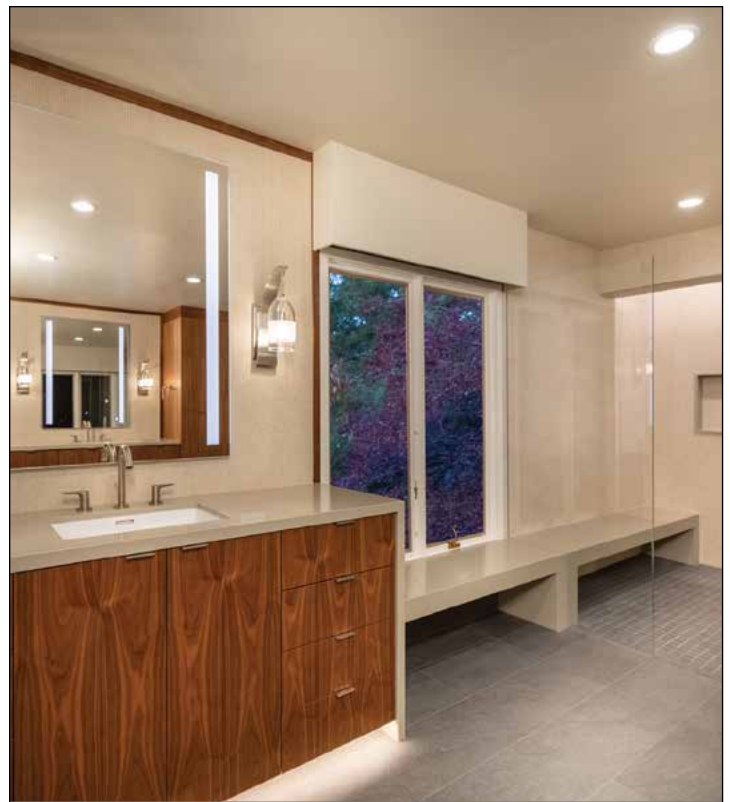


Save the date

With the website and our newsletters get updates about what’s happening in your community. Highlights for the fall season include:

September

- 06** Duck Drop (Fundraiser sponsored by Rotary Club of Incline Village)
- 09** IVCBA Inclined To Meet monthly program with Alexis Hill
- 10** Gratitude Party and Auction, Tahoe Chocolate and Wine Festival Reimagined (a benefit for Sierra Community House)
- 18** Siebens-Binz SNU Tahoe Forum with Sir Richard Branson
- 19** Beach Boys Concert (a benefit for Incline Village Community Hospital)
- 25** Best Ball for a Cause Tournament (fundraiser sponsored by Rotary Club of Tahoe-Incline)



www.AspenLeafInteriors.com | 530.338.1088 | design@alifirm.com | CID#6680





CHOOSE YOUR PLACE TO WORK Incline Golf | Parks & Recreation | Diamond Peak Ski Resort

Seasonal & Year-Round Jobs

Part-Time, Full-Time, Flexible options

Both Indoor & Outdoor Jobs with Great Locations & Perks!

Free/discounted venue access & food beverage discounts

Championship & Mountain Golf Courses

- Facilities Ops. Staff (Events)
- Food & Beverage (Cook)
- Golf Shop
- Grounds Maintenance
- Outside Services

Parks & Recreation

- Food & Beverage (Cook)
- Lifeguards
- Parks Maintenance
- Swim Instructor

Diamond Peak Ski Resort (winter is on the way...)

- Cashier/Tickets
- Food & Beverage (Cook, Cashier)
- Lift Operator
- Parking Attendant/Property Operations
- Rental Shop

- Shuttle Driver (CDL)/Tram Driver
- Ski/Snowboard Instructor (Child Ski & Ski Ride Center)
- Ski Patrol
- Snowmaking/Grooming

View the full list of available jobs online at www.YourTahoePlace.com/jobs

Or contact jobs@yourtahoepace.com, call 775.832.1100 (EOE)

IVGID BOARD OF TRUSTEES



Tim Callicrate
Chairman

PO Box 5663
Incline Village, Nevada
89450

775.336.9925
callicrate_trustee@ivgid.org

Term expires 2022



Matthew Dent
Vice Chairman

774 Mays Blvd. #10-573
Incline Village, Nevada
89451

775.298.1005
dent_trustee@ivgid.org

Term expires 2024



Michaela Tonking
Treasurer

546 Lantern Ct.
Incline Village, Nevada
89451

775.225.0748
tonking_trustee@ivgid.org

Term expires 2024



Sara Schmitz
Secretary

932 Lakeshore Blvd.
Incline Village, Nevada
89451

925.858.4384
schmitz_trustee@ivgid.org

Term expires 2024



Kendra Wong
Trustee

774 Mays Blvd. #10-294
Incline Village, Nevada
89451

916.251.9664
wong_trustee@ivgid.org

Term expires 2022



TENNIS & PICKLEBALL CENTER

964 Incline Way,
Incline Village, NV 89451
775.832.1235
inclinetenis.com

The Incline Village Tennis Center, located next to the Recreation Center, offers 8 tennis and 12 pickleball courts in a picturesque alpine setting along a year-round creek. Tennis rackets, pickleball paddles, balls, shoes, apparel and logowear are available in the Pro Shop. Racket stringing is available on site by our staff, with a wide variety of synthetic and natural gut string available.



CHAMPIONSHIP & MOUNTAIN GOLF COURSES

955 Fairway Blvd. & 690 Wilson Way,
Incline Village, NV 89451
775.832.1146
golfIncline.com

The Incline Village Golf Courses offer complete facilities to meet your golfing needs. Our facilities include two 18-hole golf courses, driving range, putting and chipping greens, food and beverage and special event facilities. The golf shops are stocked with full lines of men's, ladies' and kids' apparel as well as the top club, golf ball products and shoes. PGA teaching professionals are available for private and group instruction. Incline Village and Crystal Bay Residents with a valid IVGID Picture Pass can receive a discount on green fees, passes and most merchandise at the golf shop.



Photo By Ciprian Photography

THE CHATEAU AT INCLINE VILLAGE™

955 Fairway Blvd.,
Incline Village, NV 89451
775.832.1240
inclineweddings.com

The Chateau at Incline Village™ features classic Tahoe stone and timber construction with a modern edge. This 13,500 square foot venue has vaulted timber ceilings, massive stone pillars, a spacious covered deck and offers expansive views of the mountains, the Championship Golf Course and Lake Tahoe. It is beautiful, multi-functional and flexible. It is the perfect venue for large or small wedding ceremonies, receptions, meetings, golf events, and parties. You dream up the event and we'll make it happen! Our professional Food & Beverage team provides great food, outstanding service and a wonderful experience.



Photo by Joy Strotz Photography

ASPEN GROVE

960 Lakeshore Drive,
Incline Village, NV 89451
775.832.1240
inlineweddings.com

Named for its beautiful location, Aspen Grove is located across the street from the stunning Lake Tahoe beaches and nestled among the Aspen trees next to tranquil Third Creek. Outdoor amenities include picnic tables, grassy lawn and a deck. The outdoor area can accommodate up to 150 guests; inside can comfortably seat up to 50 guests.

Catering and bartending services are available through our outstanding professional food service team for your convenience. With its stunning mountain and forest views, Aspen Grove is one of the most affordable venues on the North Shore and perfect location for spring, summer and fall events.



DIAMOND PEAK SKI RESORT

1210 Ski Way,
Incline Village, NV 89451
775.832.1177
diamondpeak.com

Diamond Peak is the ultimate family and kid-friendly ski resort featuring spectacular Lake Tahoe views, uncrowded terrain and affordable lift tickets with a laid-back atmosphere. Learn to ski or snowboard or improve by taking a group or private lesson. The Child Ski Center (ages 3-6) offers both one-on-one private instruction and small group lessons (ages 4-6) with no more than five children per instructor. The Ski and Snowboard School is known for the popular Sierra Scout All day Adventure Package for ages 7-14 that includes morning and afternoon group lessons, rental equipment, lift ticket and a supervised lunch. Families can also take a Private “Family and Friends” Lesson special if they want to learn together.



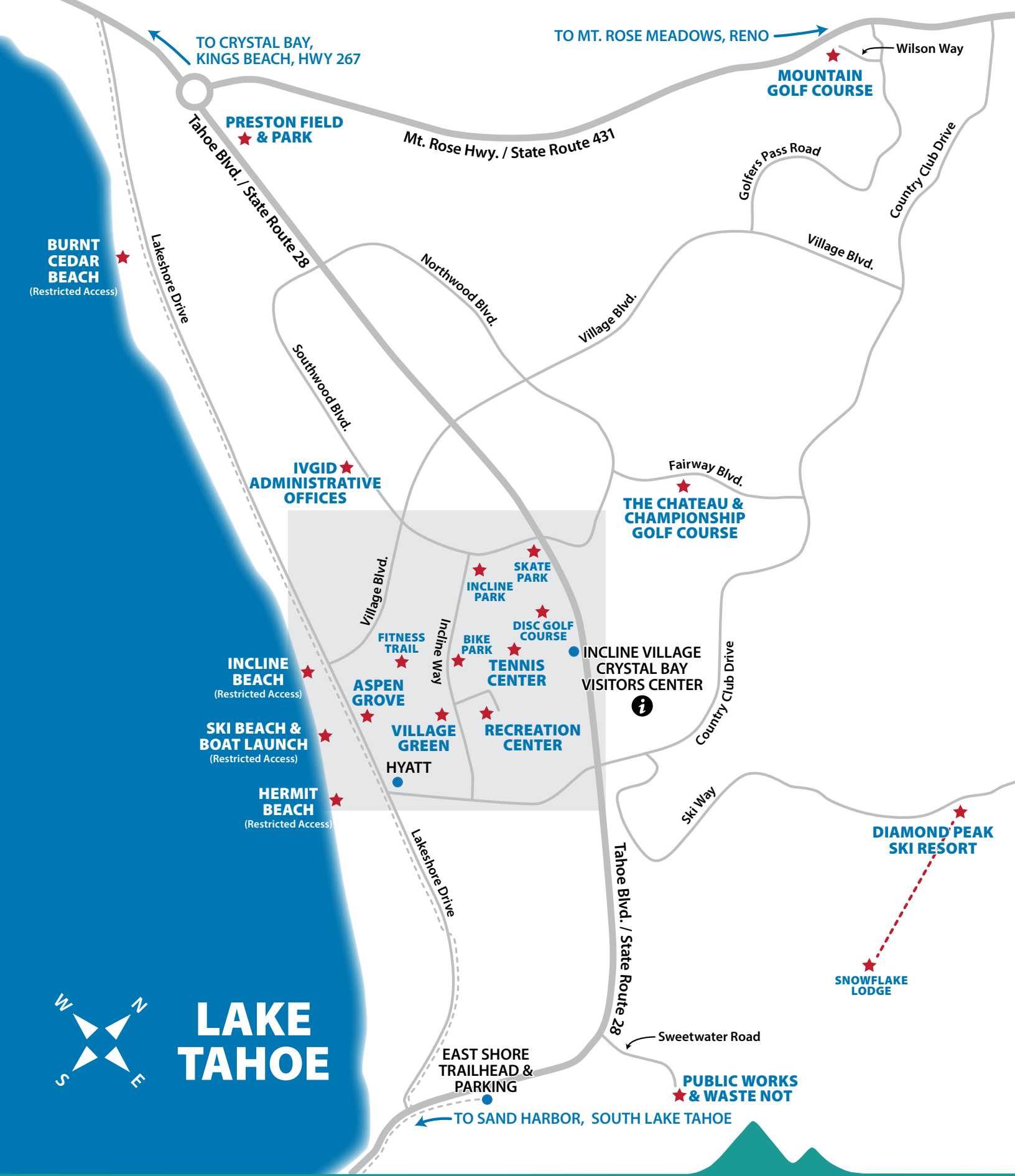
THE ROBERT & ROBIN HOLMAN FAMILY BIKE PARK

980 Incline Way
Incline Village, NV 89451
inlinerecreation.com

The Incline Village Parks & Recreation, the Incline Tahoe Foundation, and Incline Bike Project collaborated to develop and maintain the Robert & Robin Holman Family Community Bike Park. This park offers a pump track; beginner and intermediate flow lines, and was funded through generous donations by community members and in large part by a grant from the Holman Family Philanthropies Fund held at Parasol Tahoe Community Foundation.

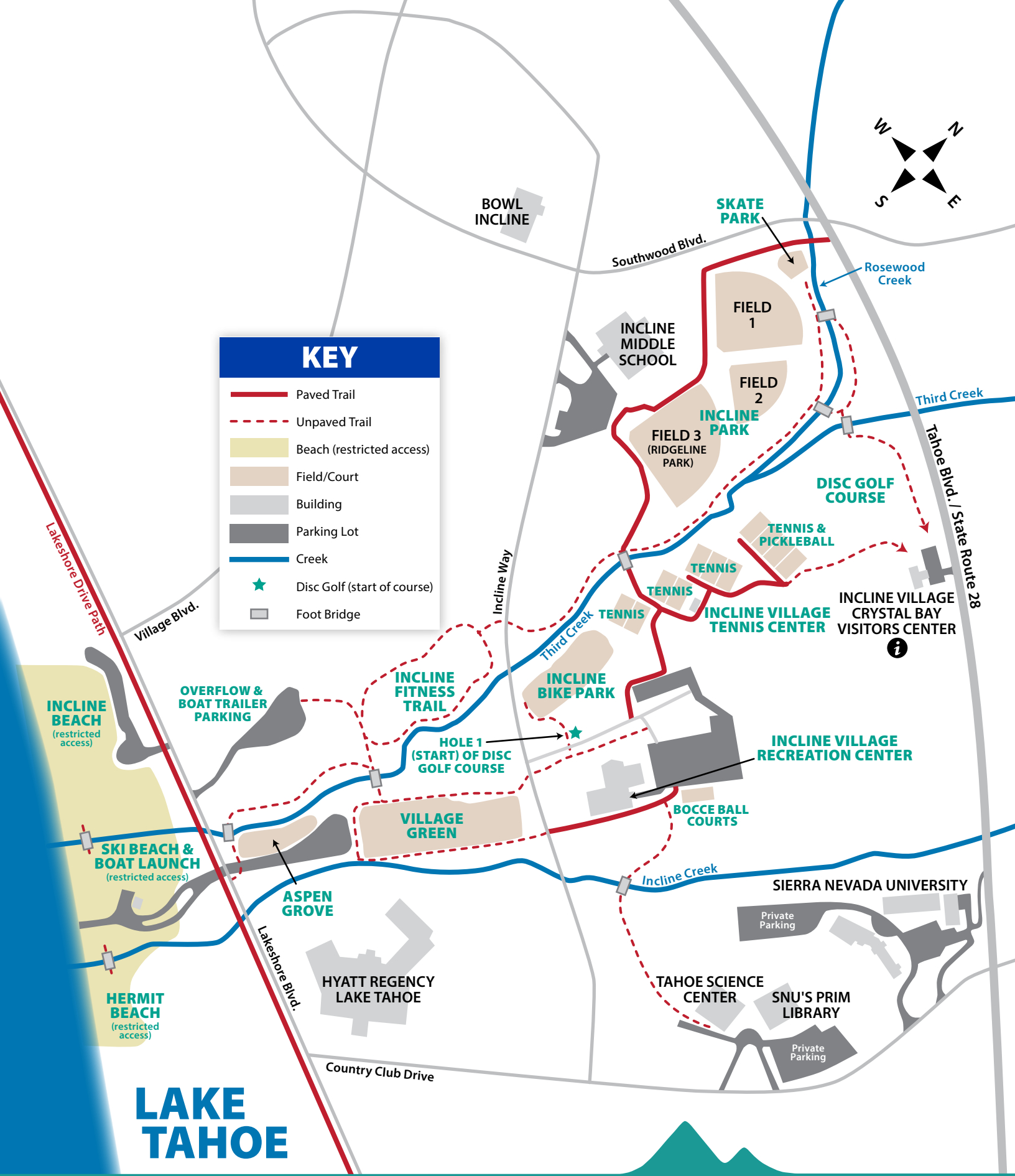
The Incline Bike Park Project’s mission is to provide a free-to-use bike park facility that welcomes all ages and skill levels to a safe, outdoor, healthy, family friendly community-gathering venue.

For information on Phase 2, check out www.facebook.com/InclineBikeProject/



Access to IVGID Beaches (Ski Beach, Incline Beach, Hermit Beach and Burnt Cedar) is restricted to IVGID Picture Pass and Recreation Punch Card holders with beach access.

LEARN MORE ABOUT IVGID PASSES AT INCLINERECREATION.COM



LAKE TAHOE

Access to IVGID Beaches (Ski Beach, Incline Beach, Hermit Beach and Burnt Cedar) is restricted to IVGID Picture Pass and Recreation Punch Card holders with beach access.

LEARN MORE ABOUT IVGID PASSES AT INCLINERECREATION.COM

YOUR GUIDES TO TAHOE REAL ESTATE

 <p>JENNIFER BULLARD — 530.545.2187 NV S.0062427 CA 01440019</p>	 <p>DAVE MCKNEELY — MCKNEELY PINNACLE GROUP 650.219.6481 NV BS.0146231</p>	 <p>GABRIELA MCKNEELY — MCKNEELY PINNACLE GROUP 775.636.3361 NV BS.0146156</p>
 <p>MIKE YOUNG — 775.771.2391 NV BS.0029150 CA 0784148</p>	 <p>JANE RUBSAMÉN — 775.843.0312 NV S.0066076</p>	 <p>DONNA TONKING — 775.722.6726 NV S.0016096</p>
 <p>SUZIE MCSHERRY — 775.413.3106 NV S.0190396</p>	 <p>MEGAN PARR WARREN — DONOVAN GROUP LUXURY TEAM 775.303.2672 NV BS.0143530</p>	 <p>KERRY DONOVAN — DONOVAN GROUP LUXURY TEAM 775.750.2190 NV BS.0052696</p>
 <p>TANYA SOULE — 775.690.2341 NV S.0170786</p>	 <p>JUDY RICHARDSON — 916.870.4003 NV S.0190300 CA 01098101</p>	 <p>STACEY HANNA — 775.690.7078 NV BS.0145845 CA 01991991</p>

TAKE YOUR CAREER TO
THE NEXT LEVEL,
CALL JENNY JOHNSON
775 691 4382

CHASE
INTERNATIONAL
LUXURY LEADER



GENERAL IMPROVEMENT DISTRICT
893 Southwood Blvd.
Incline Village, NV 89451

Specialized Care Where *you* Need it.

- Concussion Management
- Elbow
- Foot & Ankle
- Hand & Wrist
- Hip
- Joint Replacement & Revision
- Knee - Iovera^o Pain Treatment Available
- Orthopedic Trauma
- Pediatric Orthopedics
- Shoulder
- Sports Medicine



TAHOE FOREST
ORTHOPEDICS &
SPORTS MEDICINE

(530) 213-0225 | www.tahoeorthopedicsandsports.com