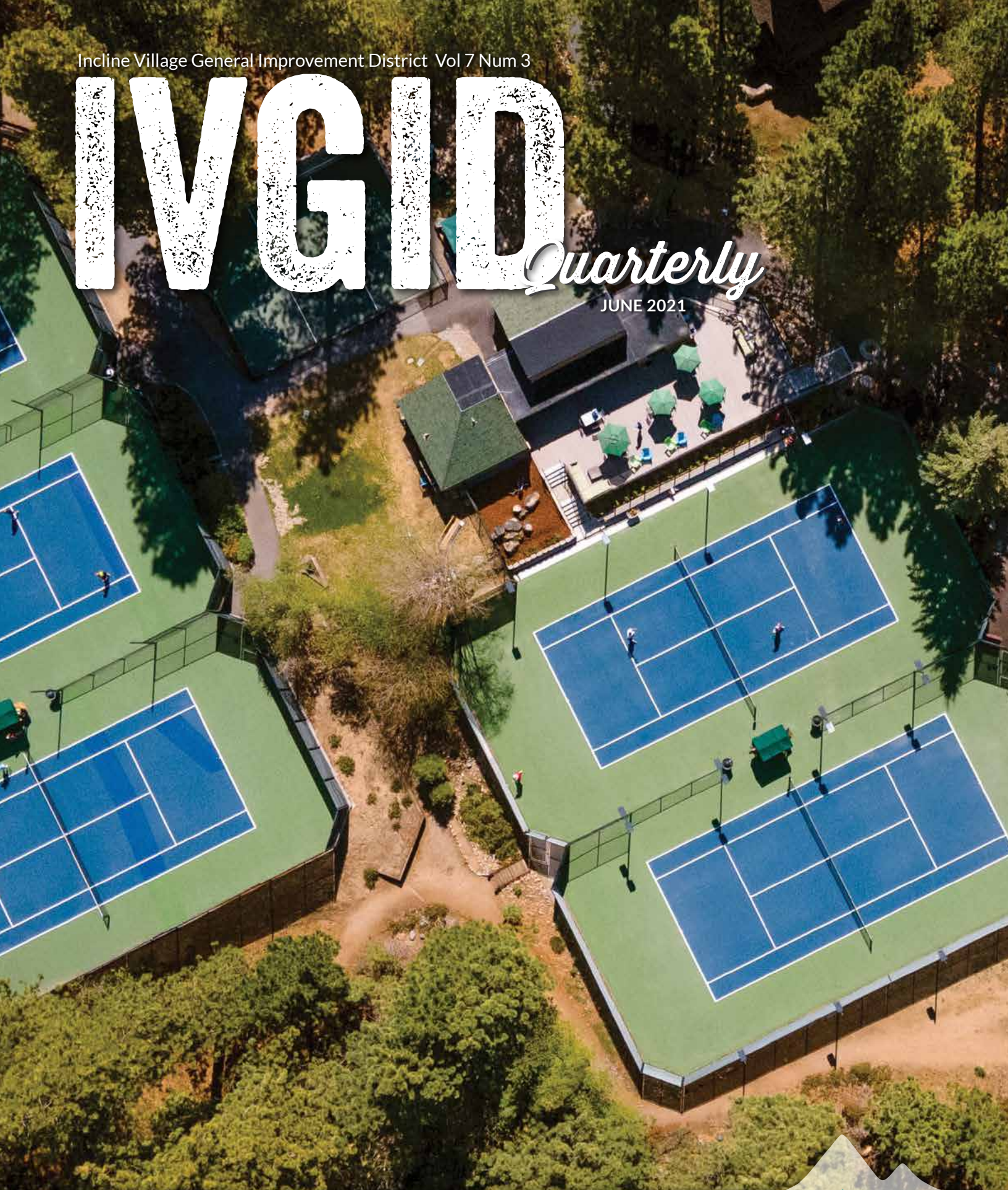


Incline Village General Improvement District Vol 7 Num 3

# IVGID

*Quarterly*

JUNE 2021





# 30%

## CORMAN GROUP

**We waive the buyer-side commission**  
for our clients with active Corman Group listings  
when a Corman Group agent is the buyer's representative.\*

Nearly \$80 million in sales in 2020, yet the real success  
80% of those transactions were new clients referred to us and returning clients.

COMMUNICATION. CONFIDENCE. SAGACIOUS NEGOTIATORS. TRUST.



### SELLER REVIEWS

"The market is off the hook, so managing our transaction is very difficult especially when other necessary entities in the complex process were busy and missing key factors. The Cormans stayed on point and made sure all were focused on us when they needed to be. Kirstin and Jeffrey drove us to a quick, clean, stress-free close. When avoidable situations arose, the Cormans stepped in, and held all, including themselves, accountable. A rare personal quality which speaks volumes about how they conduct business. They instill trust because they are trustworthy. They take responsibility because they are responsible and ethical. They work hard for their clients. Old fashion traits I value. They are committed to your success 100%." — R.L. Incline Village, NV

"When we went to Corman Group, we went to 'first' from worst...firing the previous agent who tried to take advantage of our elderly parents and fire-sale their property for a quick commission. Thankfully, we found Jeffrey and Kirstin and their dedicated team! Jeff was consultative, professional, and embraced all involved in the transaction for a win-win outcome. You will not find more responsive Realtors in the area or anywhere in my opinion. Simply THE best."  
— D.B. Boston, MA



**CORMAN GROUP | KIRSTIN & JEFFREY CORMAN**

CONCIERGE REALTOR®/ADVISOR

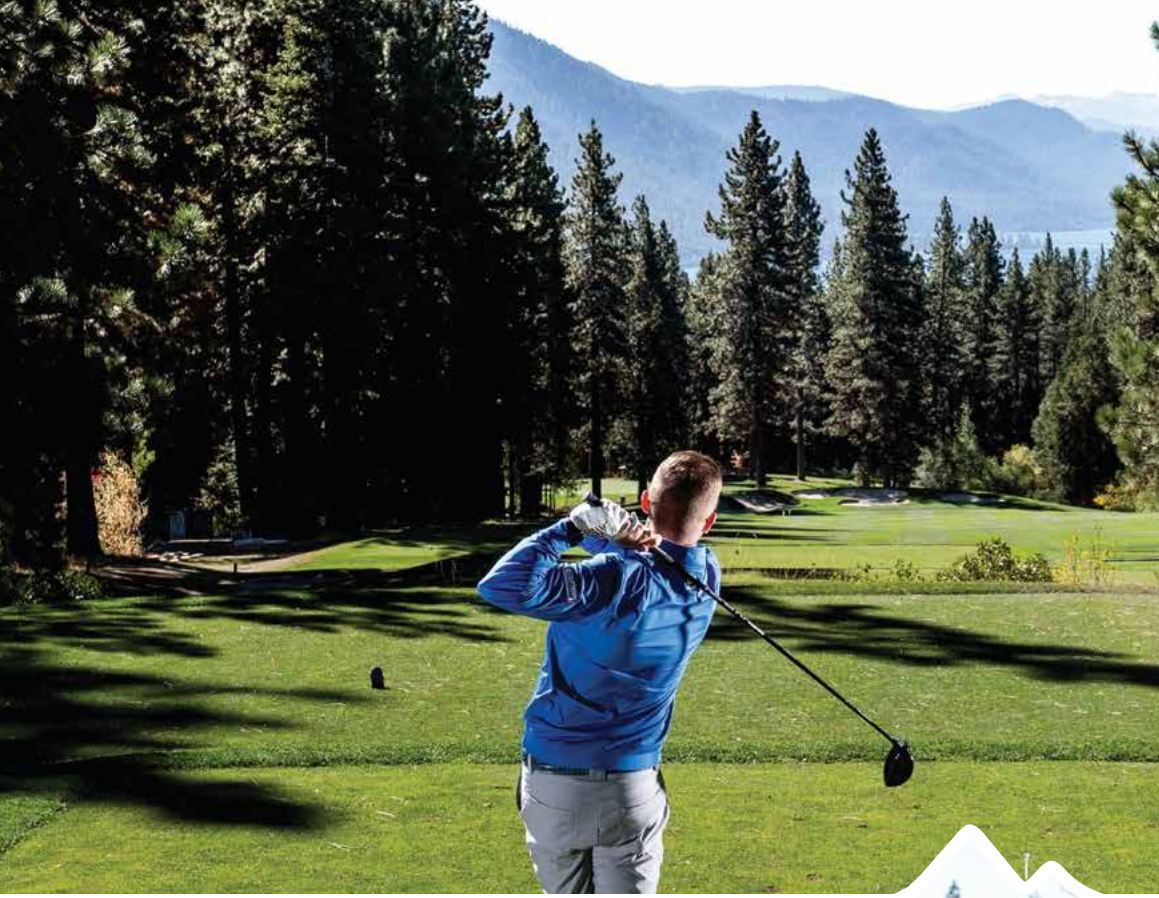
775.339.1144 | [Jeff@eXpIncline.com](mailto:Jeff@eXpIncline.com)  
[www.liveincline.com](http://www.liveincline.com)

901 Tahoe Blvd. Suite 5  
Incline Village, Nevada 89451

NRED S174475 | S181092



\*Please contact The Corman Group for conditions and for more information.



### INCLINE VILLAGE GOLF COURSES

*Championship Course*

955 Fairway Blvd • 775-832-1146

A classic 18-hole public Lake Tahoe golf course featuring a Robert Trent Jones Sr. design and lake views. This par-72 course was listed "Best in State" 2012 - 2015 by Golf Digest magazine and ranked #8 in Nevada on Golfweek's "Best Courses You Can Play 2020" list.

*Mountain Course*

690 Wilson Way • 775-832-1150

Our 18-hole, par-58 course is fun, affordable, and quick to play with special 9-hole and twilight rates. Bring the family to enjoy the outdoors together.

Book tee times for both courses at [GolfIncline.com](http://GolfIncline.com).



*Doug Miranda Photography*



### INCLINE VILLAGE PARKS & RECREATION

980 Incline Way • 775-832-1310

The Incline Village Recreation Center offers a holistic approach to fitness, health and wellness, including a range of specialty services. The center features an indoor pool, group and water fitness classes, a cardiovascular room, gymnasium and a variety of programs for the whole family.

Visit [InclineRecreation.com](http://InclineRecreation.com) for details about Recreation Center memberships and Parks & Recreation camps, programs and activities.

### THE GRILLE AT THE CHATEAU

955 Fairway Blvd • 775-832-1146

Located on The Championship Golf Course, The Grille is open to the public and offers a beautiful view of the 18th green, mountains, trees and Lake Tahoe from the dining room and our outdoor seating area. The Grille serves quality, fresh, wholesome ingredients with thoughtful service every day during the golf season (May through October).

Join us for lunch, our extended happy hour or order takeout. View menus, make a reservation, or order online at [TheGrilleAtTheChateau.com](http://TheGrilleAtTheChateau.com).

### INCLINE VILLAGE WEDDINGS & EVENTS

955 Fairway Blvd • 775-832-1240

Create an unforgettable experience for your Lake Tahoe wedding, meeting, celebration or golf event. Our facilities include The Chateau at Incline Village™, Aspen Grove, The Championship and Mountain Golf Courses, and Diamond Peak Ski Resort.

Let our team handle the logistics of planning for current health and safety requirements and enjoy your event. View rates and fill out an inquiry form at [InclineFacilities.com](http://InclineFacilities.com).

### INCLINE VILLAGE TENNIS & PICKLEBALL CENTER

964 Incline Way • 775-832-1235

The Incline Village Tennis & Pickleball Center is located in a picturesque alpine setting along a year-round creek. Our club-like facilities are open to the public with daily court fees or seasonal memberships. The center features tennis courts, pickleball courts, and a pro shop with demo rackets and paddles. Lessons, socials, tournaments and camps are offered during the summer. Find out more at [InclineTennis.com](http://InclineTennis.com).

Measures have been implemented at all IVGID venues to reduce touchpoints and adhere to state and local regulations. Please visit the Health & Safety sections on our websites prior to planning your visit to any IVGID venue so we can remain open and operate safely for our community. | [YourTahoePlace.com](http://YourTahoePlace.com)





**BOARD OF TRUSTEES**

Chairman  
Tim Callicrate  
callicrate\_trustee@ivgid.org

Vice Chairman  
Matthew Dent  
dent\_trustee@ivgid.org

Secretary  
Sara Schmitz  
schmitz\_trustee@ivgid.org

Treasurer  
Michaela Tonking  
tonking\_trustee@ivgid.org

Trustee  
Kendra Wong  
wong\_trustee@ivgid.org

**EDITORIAL STAFF**

MANAGING EDITOR  
Paul Raymore

CONTRIBUTORS

Darren Howard  
Kyle Thornburg  
Ashley Wood  
Neil Gunn  
Genevieve Hoffee  
Kerrie Tonking  
Shelia Leijon  
Madonna Dunbar  
Brad Underwood  
Marty Williams  
Brooke Smith La Fata  
Pandora Bahlman  
Jaclyn Ream

COPY EDITOR

Kari Ferguson

**CONTACT US**

893 Southwood Blvd.  
Incline Village, NV 89451  
775.832.1100  
info@ivgid.org

**PUBLISHING**

Each Incline Village/Crystal Bay parcel owner receives one subscription to a domestic address.

ADVERTISING SALES

CCMedia  
Reno | Las Vegas  
P | 775.327.4200  
peggy@cc.media  
www.cc.media

**COVER PHOTO**

Photo by Jake Pollock

# WHAT'S INSIDE

06	Welcome Message from Darren Howard
08	Incline Village Recreation Center Updates
10	Youth Specialty Camps
12	Adult Sports
14	Aquatics Summer Programs
16	Senior Programs
20	Guide to IVGID Passes
22	Beaches & Watercraft Information
24	Tennis & Pickleball Center Updates
30	Incline Village Golf Updates
35	New Staff Spotlights
36	Outdoor Fun: Venue Users Testimonials
38	Venue Spotlight: Aspen Grove
40	Public Works Update
41	Local Heroes 4th of July Parade
42	Leave Only Your Footprint
44	IVGID's Board of Trustees
45	Incline Village/Crystal Bay Neighborhood Map
46	Heart of Incline Village/Crystal Bay Map

## IVGID FACILITIES & COMMUNITY INFO

Aspen Grove Community Center	960 Lakeshore Blvd.	775.832.1240
Burnt Cedar Beach	665 Lakeshore Blvd.	775.832.1232
Championship Golf Course	955 Fairway Blvd.	775.832.1146
Diamond Peak Ski Resort	1210 Ski Way	775.832.1177
Incline Beach	967 Lakeshore Blvd.	775.832.1233
Incline Elementary School	915 Northwood Blvd.	775.832.4250
Incline High School	499 Village Blvd.	775.832.4260
Incline Middle School	931 Southwood Blvd.	775.832.4220
Incline Park	939 Southwood Blvd.	775.832.1310
Incline Skate Park	Tahoe Blvd. & Southwood	775.832.1310
IVGID Administration	893 Southwood Blvd.	775.832.1100
Lake Tahoe School	995 Tahoe Blvd.	775.831.5828
Mountain Golf Course	690 Wilson Way	775.832.1150
Preston Field	700 Tahoe Blvd.	775.832.1310
Public Works	1220 Sweetwater Rd	775.832.1203
Recreation Center	980 Incline Way	775.832.1310
Sierra Nevada University	999 Tahoe Blvd.	775.831.1314
Ski Beach	967 Lakeshore Blvd.	775.832.1156
Tennis & Pickleball Center	964 Incline Way	775.832.1235
The Chateau at Incline Village™	955 Fairway Blvd.	775.832.1240
The Grille at the Chateau	955 Fairway Blvd.	775.832.1178
Village Green	960 Lakeshore Blvd.	775.832.1310



# BUILDING YOUR DREAMS

CALIFORNIA & NEVADA

RUBICON BAY - TAHOE CITY - INCLINE VILLAGE



LARGE RENOVATIONS, ADDITIONS AND NEW HOMES  
*Reinventing and Rejuvenating your Old Tahoe to Mountain Modern Home*





## Time To Get Back To Normal

Spring has arrived and it's time to start getting out and enjoying all that Incline Village and Crystal Bay have to offer. One of the great summer enjoyments comes from golf and we have two great options here. The Championship Course for those who like a challenge and the Mountain Course for those who like great views and shorter shots, but don't be fooled as this course is also challenging!

Jeff Clouthier and his staff worked hard over the off-season and I think everyone will be pleasantly surprised at how good the courses are after a very challenging winter.

Senior Head Professional, Kyle Thornburg and Mountain Course Head Professional, Ashley Wood were also busy planning for what we hope will be a closer to normal golf season. Most of you will notice some new smiling, friendly faces this season and our management staff is busy training them on how to deliver the best possible customer service to you and your guests.

This spring, our plans were to open as close as possible to normal operations including:

- Regular tee times with 12 minute intervals at the Championship Course.
- Two golfers to a cart (carts with dividers are available upon request).
- Coolers available on the golf carts.
- Staff is available to load your golf bags on the carts and unload and clean your clubs following the round.
- Beverage cart service is fully reinstated. (Championship Course)
- Normal tee time bookings as in years past.
- All players will be required to guarantee their tee time with a credit card. This will only be required the first time you book.

Please check [www.GolfIncline.com](http://www.GolfIncline.com) for updates and changes that may occur throughout the season.

Food and beverage operations are up and running at the snack bars and The Grille at The Chateau. Reservations at The Grille are currently not required but are strongly recommended. The Grille is also offering curbside takeout during lunch (11am-4pm) for those who want to limit contact.

Some health and safety restrictions will still remain this summer, such as smaller class sizes for Get Golf Ready, Junior golf programming and specialty clinics. Please refer to [www.GolfIncline.com](http://www.GolfIncline.com) and/or subscribe to our golf email newsletter for more details.

Lastly, I'm not sure how many people realize this, but the Incline Village General Improvement District will be celebrating 60 years of being a GID this summer. This will be a year of celebration and reflecting on all that has been accomplished at IVGID over the last 60 years.

I hope to see you out enjoying the golf courses, beaches, parks, Recreation Center, newly-remodeled Tennis & Pickleball Center, hiking trails, and everything else this amazing place has to offer.

Keep it Simple,



Darren Howard  
Director of Golf  
and Community Services



## Facial Rejuvenation

### Transform Your Skin

Increase Collagen, Reduce Wrinkles, Shrink Pore Size, Decrease Acne Scars  
Even Skin Tone, Improve Texture



Pamela Murphy Acupuncture

907 Tahoe Blvd #5, Incline Village, NV

(775) 799-5479 | [www.pammurphyac.com](http://www.pammurphyac.com)





THANK YOU FOR MAKING OUR  
**RESTAURANTS TOP-RANKED**  
ON  **tripadvisor**<sup>®</sup>

We have the recipe to what foodies expect in culinary excellence.  
We are so thankful for our guests who have ranked us  
#1 in dining experiences and service.

**Atlantis**<sup>™</sup>

CASINO RESORT SPA • RENO

[atlantiscasino.com](http://atlantiscasino.com)

Every Foodie's Paradise

*Bistro Napa*

ATLANTIS  
STEAKHOUSE



*Sushi Bar*  
on the sky terrace

PURPLE PARROT

Manhattan **deli**

Toucan **Charlie's**  
BUFFET & GRILLE

*Oyster Bar*  
on the sky terrace





## THE INCLINE VILLAGE RECREATION CENTER

Lake Tahoe's finest fitness and recreation center for you and your family, the Incline Village Recreation Center is a 37,000-square-foot, first rate complex offering activities for all ages.

A variety of membership options are available including family, couple, corporate memberships and flex passes. Inquire at the Parks and Recreation Counter or call 775.832.1300 for details. Membership rates can be found on the Recreation Center website at [www.InclineRecreation.com](http://www.InclineRecreation.com).

Your membership includes lap swim, group and aqua fitness classes, limited gymnasium use, and use of the cardiovascular/strength conditioning room.

### Cardiovascular Area

We offer 30 popular cardiovascular machines including: LifeFitness Powermill, Matrix Climbmill, cross-trainers and upright bikes, Precor elliptical cross-trainers, treadmills and recumbent bikes, StarTrac stepper and bikes, Cybex Arc Trainers, SciFit upper body ergometer and recumbent elliptical, and a Versaclimber and Concept II Rower. Most of the cardiovascular machines have personal televisions or are connected to the Broadcast Vision Group Cardio Theater System.

### Strength Area

Includes a mixture of 12 individual circuit machines from Cybex Eagle Strength and Matrix, a LifeFitness Dual Pulley System, Cybex Modular Strength System with six strength stations, Free Motion Squat Machine, dumbbells up to 100 pounds, several fixed barbells, and four flat bench stations. Fitness equipment is maintained and serviced regularly.

### Group Fitness Classes

Group and Aqua Fitness Classes are included in your membership. We offer: Cardio Cycle, Yoga, HIIT, Zumba, Cardio/Strength, Strength Conditioning, Sports Conditioning, Flexibility/Core/Balance, 55+ Fitness, Combo Aqua Fitness, and Liquid Cardio. See the Group Fitness/Aqua Fitness Class Schedule at [InclineRecreation.com](http://InclineRecreation.com).

### Recreation Center Tours & Fitness Room Orientation

Are unavailable at this time; however, you can take a virtual tour of the Recreation Center at [www.yourtahoeplace.com/parks-recreation/rec-center/services-amenities](http://www.yourtahoeplace.com/parks-recreation/rec-center/services-amenities). If you are interested in a membership you may come to the Recreation Center and observe several areas.



**Corporate Membership Program**

A Corporate Membership Program is available to keep your company’s greatest assets happy and healthy. Research proves a healthy employee is a more productive employee. Find details online at [www.InclineRecreation.com](http://www.InclineRecreation.com), stop by the Parks & Recreation Counter, or call 775.832.1300.

**Snack Bar/ Pro Shop**

Located in the main lobby, the Snack Bar and Pro Shop are your stops for disc golf sets, yoga mats, logo wear, seasonal clothing, headphones, swimwear, goggles, energy bars, nuts, sports drinks, on-the-go meals, coffee, soda, juices and other items.



**Parks & Rec Counter Hours**

9am to 5pm Daily

Holiday hours are online at [www.inclinercreation.com](http://www.inclinercreation.com)  
775.832.1310

[parksandrec@ivgid.org](mailto:parksandrec@ivgid.org)

Located inside the Rec Center, 980 Incline Way



Left to Right: Melissa Goodman, CSR; Tracie Chambers, CSR; Heather Shook, CSR; Larry Peyton, Agent; Michael Peyton, Agent; Stephanie Howat, CSR; Sarah Shulman, CSR / Office Manager; Tracy Peters, Administrative Assistant

**PEYTON INSURANCE AGENCY LLC**

775.831.6233 | [mpeyton@farmersagent.com](mailto:mpeyton@farmersagent.com)

770 Northwood Boulevard #10

Incline Village, NV 89451

<https://agents.farmers.com/nv/incline-village/michael-peyton>

Auto | Home | Commercial | Workers’ Comp  
Life & Health | Bonds | & Much More!

NV LIC #935773 | CA LIC #0D72961



775-833-3388 NV, CA & HI LICENSED





## YOUTH SPECIALTY SUMMER CAMPS

Specialty enrichment camps provide campers with an opportunity for hands-on, in-depth exploration and fun. Some sessions and waitlists may already be full. Check availability on the online registration page or inquire with the Recreation Counter.

### Summer Paddle Camp

Participants will engage in both land and water-based games and exercises that increase stand-up paddleboarding (SUP) knowledge and skills to improve overall fitness level. Learn the proper fundamentals of paddle boarding, prone paddling and surfing, all while emphasizing water safety awareness. Participants must be able to swim! SUP board, paddle, Personal Flotation Device (PFD) and leash all provided. This camp is for IVGID Picture Pass holders with beach access.

**Ages:** 8 - 14 years

**Sessions Run:** July 12 - July 30

**Location:** Ski Beach

### Junior Lifeguard Training Program

The Junior Lifeguard Program is offered to IVGID Picture Pass holders with beach access. This program provides instruction in beach safety, swimming, paddling and encourages teamwork, safety and leadership. Students will have the opportunity to swim, paddle and run, and will also have the opportunity to shadow a lifeguard on the beach.

**Ages:** 9 - 14 years

**Sessions Run:** July 12 - August 12

**Location:** Incline Beach

### Mini Guard Camp

An introduction to aquatic safety through discovery and play both in and out of the water. This camp is offered to IVGID Picture Pass holders with beach access.

**Ages:** 6 - 8 years

**Sessions Run:** July 12 - August 12

**Location:** Burnt Cedar Beach

### Mountain Bike Camp

Join Scott and Michelle Vaughan for a week-long camp of bike handling skills. Campers/Riders must have a mountain bike (can rent one from Village Ski Loft), bike helmet, and water bottle. Participants will ride the Robert & Robin Holman Family Bike Park as well as local trails.

**Ages:** 10 - 17 years

### Girls Volleyball Skills Camp

Camp is designed to teach players the overall basics of volleyball, (passing, serving, attacking, blocking and defense) and how those skills relate to team volleyball. Instructor: Tony Graeber.

**Dates:** June 21 - June 24

**Time:** 10am - 2pm

**Location:** Incline Village Recreation Center

### Invasion Soccer Camp

Expert coaching by Peter Salazar & summer fun by the lake. A top-class camp in beautiful Lake Tahoe, focusing on technical skills development for all levels, along with a fun and accepting atmosphere. Hablamos español.

**Ages:** 8 - 17 years

**Session I:** June 28 - July 2, 8:30am - 12:30pm

**Location:** Incline Park 1

**What happens in the Photo Booth stays in the Photo booth**

**Unless you share the photos**

**Weddings · Parties  
School Events  
Corporate Events**

**Call: 775-846-3535**

**CARSON TAHOE RECREATION CENTER PHOTO BOOTH**

**mike@ctrphotobooth.com  
www.ctrphotobooth.com**



**Summer Youth Skateboarding Camp with Village Skate School**

Incline Village Parks & Rec is excited to start our Summer Youth Skateboarding Camps. Led by Village Skate School directors; Cedar Gateley and Clayton Green, we will have 3 amazing skateboarding sessions this Summer. Held at the Incline Skate Park, these

camp are for skaters of all abilities. Whether you want to learn how to skate or you want to improve your skills these camps are for you!

**Ages:** 6 - 14 years  
**Time:** 8:30am - 11:30am

**TK Basketball Camps**

The youth basketball camp at the Incline Village Recreation Center is designed to teach the skills needed to become an all-around basketball player. Coached by Incline High School's Varsity Boy's Head Coach, Tim Kelly.

**Ages:** 8 - 14 years  
**Time:** 1pm - 4pm

**Lake Tahoe Science Camp**

Join U.C. Davis at the Tahoe Environmental Research Center to learn science-based information about the Lake Tahoe region. This camp is designed to increase student excitement and interest in science

through interactive, hand-on activities, games, and demonstrations.

**Ages:** 3rd - 8th grade  
**Location:** Sierra Nevada University

**Boys & Girls Club Of North Lake Tahoe**

**Duffield Youth Program Summer Day Camp In Partnership with IVGID**

The Boys & Girls Club of North Lake Tahoe, Duffield Youth Program and Incline Village Parks & Recreation have teamed up to bring an amazing summer camp program to the Boys & Girls Club Incline Village site. Participants must be Boys & Girls Club of North Lake Tahoe members. For more information or to register for camp visit [www.bgcnl.org](http://www.bgcnl.org).



TUUCI CA Lic #775721 NV Lic #075078



**MOUNTAIN HOME CENTER**

**RESORT LIVING IN YOUR OWN BACKYARD.**

Let our team help design the ideal shade solution for your space.

Main Showroom 11403 Brockway Road, Truckee, CA | 530.587.6681 | [MountainHomeCenter.com](http://MountainHomeCenter.com)  
 Tuuci | Frankford | Treasure Garden





### Men's Softball League

Teams play a total of 8-10 league games. The top four teams from each division qualify for playoffs. Games will be played at Incline Park.

**Ages:** 18+

**Days:** Tuesdays, early June through late August

**Time:** 6pm - 10pm

### Spikeball League

Grab a partner and get in on the sport that is sweeping the nation! The sport of roundnet, aka "that yellow trampoline game" aka "if volleyball and foursquare had a baby," is played 2 vs. 2. The league will culminate in a tournament hosted by the Utah Roundnet Association.

## ADULT SPORTS

The Incline Village Parks & Recreation department offers a variety of adult sports programs throughout the spring, summer and fall. An abbreviated list is below, but you can find more details on all of these programs online at [InclineRecreation.com](http://InclineRecreation.com).

### Coed Soccer League

Come kick it with us in outdoor adult coed soccer! Teams play a total of 8-10 league games. The top four teams from each division qualify for playoffs.

**Ages:** 18+

**Days:** Wednesdays, early June through late August

**Time:** 6pm - 10pm.

### Men's Soccer League

Looking for more soccer time? Join us for our debut Men's Soccer League! Teams play a total of 8-10 league games. The top teams from each division qualify for playoffs.

**Ages:** 18+

**Days:** Mondays, early June through late August

**Time:** 6pm - 10pm

### Coed Softball Leagues

Teams play a total of 8-10 league games. The top four teams from each division qualify for playoffs. Games will be played at Incline Park and Preston Field.

**Ages:** 18+

**Days:** Coed "D" & "E" - Wednesdays & Thursdays, early June through late August

**Time:** 6pm - 10pm

**Be a PART of the Community.**

**Join [IVCBA.org](http://IVCBA.org)**

# Expanding Access Improving Affordability



## Outpatient MRI Now Open

Offering competitive pricing to regional outpatient MRI clinics

The Outpatient MRI Unit at Stateline Medical Center expands access, improves affordability and delivers the high-quality patient experience.

Specified Outpatient MRI services will cost \$1,125\* and patients without insurance and choosing a cash pay option will receive a discount of 30% resulting in an **out-of-pocket cost of only \$787\***.

\*Radiologist fee will be additional. Price subject to change.

**530.543.5850**

165 Highway 50  
Stateline, NV 89449

**[bartonhealth.org/medical-imaging](http://bartonhealth.org/medical-imaging)**







## AQUATICS SUMMER PROGRAMS

### Group Swim Lessons

Join us for afternoon group swim lessons at the Recreation Center Pool this summer. Youth ages 6 months to 17 years are welcome. Programs follow the American Red Cross Learn-to-Swim Guidelines and all instructors are water safety instructor certified. Please refer to the swim lesson level descriptions online at [www.inclinerecreation.com](http://www.inclinerecreation.com). If your child is between two levels, please register them for the lower level (the instructor can give them more advanced skills to work on, if needed).

Registration can be done online, in person at the Recreation Center counter, or by calling 775.832.1310. To register online, visit [register.yourtahoepace.com](http://register.yourtahoepace.com). If you have any questions or comments about swim lessons, please feel free to email the Aquatics Office at [Aquaticschedule@ivgid.org](mailto:Aquaticschedule@ivgid.org).

### Youth & Adult Private, Semi-Private Swim Lessons, Dive Lessons

Private lessons as well as stroke clinics, are available for all ages and abilities with certified water safety instructors, and swim coaches. To make a private lesson request, please email the Aquatics Office at [aquaticschedule@ivgid.org](mailto:aquaticschedule@ivgid.org). All private lessons are subject to availability of instructors. Lessons must be paid for in advance; payment must be made at the Recreation Center Counter.

### Junior Aid Training Class

This course will teach you everything you need to know to be an assistant in swim lessons. We will train you to work alongside our swim instructors. Junior Aids may also receive perks for helping with our swim lessons. Ages 13-15 years.

**When:** Saturday, June 19, 2021, 11am - 2pm

**Where:** Recreation Center pool

**Fee:** \$31, \$25 w/IVGID Pass.

**Deadline to register:** June 18, 2021

### Pre-Swim Team/Northern Nevada Aquatics Swim Team (NNA)

Come join Incline's premier swim teams for both competitive and novice swimmers. Our USA Swimming certified coaches will evaluate appropriate levels and practice times for each participant. For those who are participating in USA Swimming competitions, the opportunity to travel to USA Swim meets is available. Swim team fees are due monthly. Please refer to the swim team level descriptions on the website. Ages 6+.

### Swim Around Tahoe

Complete this program by swimming in the pool, the lake, or whatever facility you desire! Just record your yardage and we will track your progress. Upon completion of the 71-mile journey you will receive a T-shirt and your name on the Finisher's Plaque at the Recreation Center Pool. This is an ongoing program for all ages with annual registration.

**Fee:** \$35, \$28 w/IVGID Pass.

### Junior Lifeguard Camp

The Junior Lifeguard Camp is offered to residents of Incline Village (participants must have beach access). This program provides instruction into beach safety, swimming and paddling, and encourages teamwork, safety and leadership. Students will have the opportunity to swim, paddle, run and shadow a lifeguard on the beach. Ages 9-14.

**When:** Monday-Thursday, 9am - 12pm

**Where:** Incline Beach (participants must have beach access)

**Fee:** \$135 per week plus a one-time uniform fee of \$20

**Session 1:** July 12-15

**Session 4:** August 2-5

**Session 2:** July 19-22

**Session 5:** August 9-12

**Session 3:** July 26-29

*\* participation in multiple sessions is encouraged*

### Program Requirements:

- Must be registered prior to the start date
- Must complete our Junior Lifeguard swim requirement (100 yard swim in under 2 minutes; 10 yard underwater swim; 5 minute tread)
- Wear required uniform



## SENIOR PROGRAMS

Please check [www.inclinerecreation.com](http://www.inclinerecreation.com) for current health & safety rules and regulations.

### 55+ Hiking Series

Join IVGID Senior Programs every Tuesday for guided hikes to beautiful Lake Tahoe locations. Meet in the Recreation Center Lobby when program transportation is reinstated. Until then, meet in the back of the parking lot at the Recreation Center. Bring water, lunch and sunscreen (camera and hiking poles recommended). Wear appropriate shoes and clothing.

**When:** Tuesdays through Oct. 26, 8:30am – 3:30pm\*

**Fee:** \$13, \$10 w/IVGID Pass

\* Some hikes require more/less time. Check the hike destination flyer for updates.

### 55+ Mountain/E-Biking Series

Ride with friends on beautiful local trails. Join fellow bikers on pre-planned routes, researched and selected by Senior Programs staff. Following these morning rides, join the group for an optional no-host lunch at one of a variety of local restaurants. Mountain bikes or E-Bikes are welcome. Bring water, helmet, sunscreen and snacks. Please bring/ wear appropriate clothing and gear. Meet at 9:15am in the Recreation Center parking lot.

**When:** Wednesdays through Oct. 27, 9:30am – 12:00 noon\*

**Fee:** \$13, \$10 w/IVGID pass

\* Some trails may require more time. Check the published schedule for timing updates.

### Conversation Café

Conversation Café is a drop-in forum hosted by the Senior Programs staff. Interact with people, share diverse views and a passion for engaging with others over interesting topics, local issues, and world news items. Candid discussions about selected topics elicit frank comments, and the dissemination of information, often with humorous anecdotes and interjections.

**Where:** Aspen Grove, 960 Lakeshore Blvd.

**When:** Thursdays, except holidays, 10am - 11:15am

**Fee:** FREE! Donations accepted for coffee and snacks.

### Incline Village/Crystal Bay Veterans Club

Veterans, supporters and community members are always welcome to join the Veterans Club at the monthly lunchtime meetings. General Membership meetings are held the last Thursday of the month, January through October, from 12pm - 2pm at The Chateau (955 Fairway Blvd., Incline Village). Join this dynamic group and be involved with special events and unique opportunities to honor and support local veterans, military service agencies, and special veterans support groups. Lunches are free for dues-paying members.

**Fee:** \$30 Annual Membership, \$7 drop-in fee for non-members and guests.

**THOROUGH AND  
COMPASSIONATE  
REPRESENTATION.**

**Estate Planning, Probate, and Trust Litigation**

**STEPHANIE K. FUNK**

Partner



**775.284.8888**

327 CALIFORNIA AVENUE  
RENO, NV 89509

[renonvlaw.com](http://renonvlaw.com)





**Veterans Club Warrior Cane Project**

Join fellow veterans for this special seminar. Cane Self-Defense will show you how to defend yourself with a simple walking cane (should you ever find yourself using one). Instruction includes stretching, balance, kicking, punching, joint locks, plus gun and knife disarming skills... all with a cane. Class is free for veterans and includes a complimentary \$225 custom wood cane.

**Incliners**

The Incliners have resumed their Tuesday gatherings! Any dues payments made in 2020 have been carried over and are valid for 2021. Please encourage any friends to join the group! Fun times and social gatherings are here again.

**Moonlight Hikes with Wine & Cheese Social**

These mile-long, paved-road hikes to the Crystal Bay lookout site, sponsored in collaboration with the National Forest Service, usually include a spectacular sunset and ensuing moonrise. Participants are encouraged to wear warm clothing and bring a flashlight. The outing includes transportation, wine, cheese and snacks provided by IVGID Senior Programs. Sign up and enjoy the views, friends, refreshments and fun. If you would like to participate, but are unable to hike either or both ways, you may ride in the van to join the group at the top and enjoy the views and the fun. Meet at the Recreation Center for prompt departure.

**Fee:** \$24, \$18 w/IVGID Pass.

**Dates:**

June 24: The Strawberry Moon – Depart 5pm

July 23 : The Buck Moon – Depart 5pm

August 23: The Sturgeon Moon – Depart 5pm

September 20: the Harvest Moon – Depart 5pm

**TAHOE FOREST HOSPICE**

*Gift & Thrift*

**893 Tahoe Blvd, Ste 1500, Incline Village, NV**

*On the corner of Tanager Street and Enterprise Street next to the underground parking lot.*

**Shop:** Mon - Sat, 10am - 5pm (closed 1 - 1:30 pm)

**Donate:** Mon - Sat, 10am - 12:30pm (space permitting)

We accept clean, cared for clothing, shoes, accessories, household goods, and current books. We are unable to accept furniture or large items.

**Contact:** (775) 298-7901

**Volunteer:** Interested in volunteering?

Email us at VolunteerServices@tfhd.com



**TAHOE FOREST HEALTH SYSTEM**

**tfhd.com**  
**Store: (775) 298-7901**



**Trips, Tours & Adventures**

A summer lineup of programs, activities and outings will be published when COVID-19 mandates are lifted sufficiently to allow for safe group transportation with socializing and mingling at scheduled destinations. Check for trip updates at the Recreation Counter or online at [InclineRecreation.com](http://InclineRecreation.com)

**Bocce Ball & Sunset Socials**

Join players at the new Bocce Complex for friendly competition bocce ball, wine, music, light appetizers and fun. Open to all adults and seniors ages 21+. Stay afterwards for the optional post-bocce potluck. Please bring items to share, your favorite beverage, and

personal picnic supplies if you plan to stay for dinner.

**When:** Thursdays through Sept. 2, 4pm - 6pm (dinner following)

**Fee:** \$8, \$6 w/IVGID Pass (per week)

**Senior Transportation**

The Senior Transportation Program is a collaborative effort provided by IVGID Senior Programs, Washoe County, NDOT and RTC. Services include regular transportation opportunities for shopping, errands, outings, and medical or personal appointments. This door-to-door, reliable, affordable service provides local seniors a way to get around, run errands, make appointments, and take care of business. Reservations are

required. Please call the Transportation Hotline at 775.886.1020 and leave the requested information for local errands at least 24 hours in advance for the Wednesday and Friday services. Regular runs to Reno and Carson on Tuesdays will be reinstated June 1. The fee for regular Tuesday, Wednesday or Friday weekly transportation is \$5.

“On Demand” transportation is also available for other individual needs. \$35 per person includes a same-day round trip for errands, appointments, personal services, etc (additional fees apply after 3 hours). Airport transportation services, (drop-off or pick up), are \$45 per person.

Book “On Demand” transportation services at least 72 business hours in advance at 775.886.1020.

Transportation services may be subject to alteration or cancellation in extreme weather and are subject to driver and vehicle availability. Requested destinations are limited to Washoe County and adjacent communities (i.e. Carson City, Stateline, Truckee, and Kings Beach).



**BOBOS SKI & PATIO**

Serving Reno & the Truckee Meadows since 1969

475 E. MOANA LN, RENO NV (775) 826-9096  
OPEN 7 DAYS 9AM-6PM WE DELIVER!

OW Lee • Tropitone • Patio Renaissance • Berlin Gardens • Hanamint • Pawley's Island • Treasure Gardens • Goldcrest • Napoleon





# WHAT'S NEW IN THE COMMUNITY FOR SUMMER

The Incline Village Crystal Bay Community & Business Association (IVCBA) is the newly formed community and business association dedicated to supporting businesses and nonprofits, and bringing community events to Incline Village Crystal Bay. Go to [IVCBA.org](http://IVCBA.org) to find local news, a directory and calendar. It offers several programs and events:

- **Local Heroes** 4th of July Weekend and Parade this year. (See page 41 for details.)
- **Tap Into Tahoe** Welcome Program for new residents brings all the community information together in a reusable canvas bag for free.

Incline's favorite way to get together in the summer (aside from hiking and relaxing at the Lake) is to enjoy outdoor concerts. The Lake Tahoe Shakespeare Festival offers live performances and Monday night concerts through its Showcase Series. Enjoy the Reno Phil, the Reno Jazz

Orchestra and the Sierra Nevada Ballet to name just a few. Classical Tahoe and TOCCATA both have a full lineup of concerts this summer. Go to St. Patrick's Episcopal Church's new amphitheater to see Mark Twain's Tales of Tahoe by McAvoy Layne. Ready for something a little more chill? Head down to Incline Beach for Friday night concerts by local bands at the Barefoot Bar set up by Incline Spirits.

Getting around Incline Village Crystal Bay and the Tahoe Basin can be challenging. There are a number of innovative public transport options this summer. TART Connect is a micro-transit shuttle service sponsored by the IV/CB Visitors Bureau. RTC Flex RIDE offers service to Reno Summit Mall from about a dozen stops in Incline. If you want to guarantee your admission to Sand Harbor, take the East Shore Express from 771 Southwood that runs daily. For more information, go to [IVCBA.org/Transportation](http://IVCBA.org/Transportation).



**Visit us at**  
 11355 S. Virginia Street  
 Reno, NV

**Showroom Hours:**  
 Mon-Fri/8:30-5:00  
 Sat/8:30-3:30



Come to **Cabinet & Lighting Supply** and let our cabinet designers show you amazing work. You will have the privilege of working with the 2nd top showroom for Crystal Cabinet Works in the country. See hundreds of light fixtures firsthand for size, finishes and material amongst the latest trends. "Enjoy Customer Service With Us"



## GUIDE TO PASSES

This Guide to Passes is a simplified, one page sheet that covers the important points of interest from Ordinance 7 and is designed as a quick reference for our residents. Please refer to IVGID's Ordinance 7 for the complete information regarding all passes.

### Resident Passes

Property owners receive up to a maximum of five (5) resident passes per assessed single family dwelling, assuming the fees are current. Resident passes can be assigned only by the listed property owner or the authorized agent for the property. Signing Agents must have a completed Agent Authorization form on file with the Parks & Recreation Department.

### Resident passes are issued in two forms:

#### IVGID Picture Pass

An IVGID Picture Pass is valid for the pass holder only. It allows the pass holder free access\* to District-owned beaches, and entitles the cardholder to the current resident rates at the Incline Village Golf Courses, Tennis Center, Recreation Center, Diamond Peak Ski Resort and the Wetlands Hunting Program.

Persons eligible for an IVGID Picture Pass include first and second degree family members of the property owner and long-term leasing renters/tenants.

Family members receiving passes must have a completed Assignment of Recreation Privileges green form on file at the Parks & Recreation Department in order to be eligible for an IVGID Picture Pass. An IVGID Picture Pass is issued for a minimum term of six (6) months up to a maximum term of five (5) years. The desired term must be specified by the property owner or authorized agent on the Assignment of Recreation Privileges form. If no expiration date is specified, the minimum term\*\* shall apply. Pass holders will receive a renewal letter to notify them when their pass is about to expire, as well as renewal instructions.

A Renter/Tenant applying for an IVGID Picture Pass must present a current, valid lease agreement in their name and a completed Assignment of Recreation Privileges yellow form to the Parks & Recreation Department in order to receive an IVGID Picture Pass. The expiration date for a Renter/Tenant IVGID Picture Pass is determined by the property owner or authorized agent, not to be extended past the valid term of the lease agreement, and must be indicated on the Assignment of Recreation Privileges form. If no expiration date is specified, the minimum term\*\* shall apply.

*A lost IVGID Picture Pass can be replaced for a \$15 fee.*

### Recreation Punch Card

A Recreation Punch Card is a transferable, non-picture card with a specific dollar value, which can be used by the resident's guests. Recreation Punch Cards are valid June 1 through the following May 31 and are issued annually. The holder of the Recreation Punch Card will gain access to District-owned beaches\*, and is eligible for the daily resident rate at the Incline Village Golf Courses, Tennis Center, Recreation Center and Diamond Peak Ski Resort. IVGID will deduct the full entrance fee to the beaches, and the difference between the regular and IVGID Picture Pass holder rates will be deducted from the card for all other facilities. Resident fees will not be deducted from the card. Residents may use a Recreation Punch Card to pay for a daily boat launch.

*A lost or stolen Recreation Punch Card can be replaced for a \$15 fee.*

### Additional Passes

Additional IVGID Picture Passes can be purchased by a property owner or person(s) authorized by a property owner and are valid for one year from the date of purchase. Up to five (5) additional Recreation Punch Cards can be purchased by the property owner or person(s) authorized by a property owner and are valid until the May 31 expiration date. Any additional pass (IVGID Picture Pass or Recreation Punch Card) will have no golf privileges and will be labeled NO GOLF (and NO BEACH if applicable). These passes cannot be used to obtain resident rates at the Incline Village golf courses.

Visit [www.inclinerecreation.com](http://www.inclinerecreation.com) for more on recreation privileges. The Assignment of Recreation Privilege Form is available online.

You can find full details on IVGID passes - both Picture Passes and Punch Cards - on our website at [www.yourtahoeplace.com](http://www.yourtahoeplace.com).

\*No Beach Parcels: If your parcel has been assessed as "No Beach," your IVGID Picture Pass or Recreation Punch Card will not grant you beach access, but does retain all other IVGID privileges. \*\*The minimum term is equal to six (6) months OR the expiration date of the lease agreement.





## BEACHES & WATERCRAFT INFORMATION

Pool and beach schedules are available for all facilities on the first of each month on our website or can be picked up at the Recreation Center or the beach gates. Snack bars are available at Incline beach and carry a variety of refreshments and beach items.

**Snack Bar Hours:** 11am – 5pm  
 May 28 - June 20 Open Friday - Sunday  
 June 21 - Aug. 20 Open Daily  
 Aug. 21 - Sept. 5 Open Friday - Sunday  
 Sept. 6 Open for Labor Day

Snack bar hours are subject to change without notice.

Beach access requires each individual 6 years and older to present a valid IVGID Pass with beach access or a Recreation Punch Card with beach access at the beach gate. For an additional fee, boat ramp access at Ski Beach is available (see Watercraft Launch Passes on this page). If an IVGID Picture Pass is lost, a new one must be obtained at the Parks & Recreation Department Counter for a fee. If an IVGID Picture Pass or Recreation Punch Card has expired, property owners or authorized agents must complete the appropriate forms with the Parks & Recreation Department Counter during operating hours.

Guests must present one of the following to enter the beaches:

- A valid IVGID Picture Pass with beach access
- A valid Recreation Punch Card with beach access

For more information regarding Recreation Privileges and our policies, please visit our website: [inclinerecreation.com](http://inclinerecreation.com). For group picnic area reservations and other IVGID facility rental information, please call 775.832.1310.

### 2021 Beach Rates & Schedule

Incline Villages Beaches are tentatively scheduled to be open from May 1 - November 1, 2021.

2021 Beach Admission Rates Punch Card or Credit Card Transactions only	
Adult (18+)	\$15
Child (6-17)	\$5
Children (0-5)	FREE
Picture Pass Holder	FREE
Boat Launching	\$22
Annual Watercraft Launch Pass	
May 1 - April 30	\$225
* Fees are subject to change	

**Ski Beach** - Boat launching facility, picnic area, volleyball & bocce ball courts. Parking and swimming is NOT allowed at this beach.

**Incline Beach** - Beach area, picnic areas, snack bar and playground.

**Burnt Cedar** - Beach area, picnic areas, playground, snack bar-TBD

### Make sure your IVGID Picture Passes are valid

Please don't wait until the day you want to visit the beaches to update or acquire your IVGID Picture Pass.

### Recreation Punch Cards

Recreation Punch Cards can be renewed online starting June 1 by visiting [inclinerecreation.com](http://inclinerecreation.com) (click the IVGID Passes & Punch Cards button in the center of the home page). You may also visit the Parks & Recreation Counter inside the Incline Recreation Center to renew your IVGID Recreation Picture Passes or Punch Cards to prevent any issues at the beach gates.

### Thanks for joining us!

In the spirit of creating a memorable experience for you and yours, please adhere to the following:

- Smoking or vaping of tobacco products is only allowed in designated areas on IVGID-managed beaches and other facilities. Please check with District staff for designated areas. Absolutely no smoking or vaping of marijuana products are allowed at all District-owned and operated facilities. For more information and to read the full resolution, see [www.yourtahoeplace.com/news/incline-village-trustees-ban-smoking-at-all-district-facilities](http://www.yourtahoeplace.com/news/incline-village-trustees-ban-smoking-at-all-district-facilities).
- Please practice respectful beach etiquette. Be present at the beach property to enjoy your reserved space. Our beaches get extremely crowded. Be mindful of the amount of space you need on the beach. Share the beach and be kind to your neighbors.
- Glass bottles and containers are not allowed at the beach.
- Your lovable pets are welcome at the Village Green. Pet play on the **Ski Beach** is available seasonally from October 15 to April 15 only.
- Keep a close watch on your little ones!



### Watercraft Launch Passes

Daily watercraft launch passes for boats and jet skis are available to valid IVGID Picture Pass and Recreation Punch Card holder with beach access at the Ski Beach gate. Season passes are available at the Parks & Recreation Department Counter or Ski Beach. A current vessel registration is required with a launch pass application. Please call 775.832.1310 for more information.

### Annual Watercraft Launch Pass

In order to purchase an annual pass (valid from May 1 - April 30) please go to the Parks & Recreation Department Counter or Ski Beach. Bring your valid beach access IVGID Pass, current vessel registration in the Resident's name, current driver's license and complete an application.

For watercraft rules and regulations, please search for "Boat Launching & Watercraft Information" on [www.InclineRecreation.com](http://www.InclineRecreation.com).

**Off-Season Boating:** During the off-season (October 1 - April 29), 24-hour advanced reservations are required to launch a watercraft. Call the Parks & Rec Counter to make reservations, 775.832.1310.

### Tahoe Boat Inspections Move to Roadside Stations

The 2021 boating season officially began May 1, 2021 and Tahoe boat inspections are streamlining the program.

- ALL Tahoe In & Out and full inspections will take place at Roadside Inspection Stations ONLY.
- Remember to keep your blue Tahoe Only inspection seal from 2021 intact to streamline your launch at the ramp.
- Plan ahead before coming to ensure you are aware of all new requirements and inspection locations.
- Remember to clean, drain, and dry your boat and equipment to protect your boat and the waters you enjoy!

Hotline: 888.824.6267  
[www.TahoeBoatInspections.com](http://www.TahoeBoatInspections.com)



## Tahoe Adventure Company

### Inspiring High Sierra Adventures

- Kayak & SUP Tours
  - Mountain Bike Tours
  - Guided Hikes
  - Multisport Adventures
  - Team Building
  - Group & Corp Outings
  - Kayak & SUP Rentals
- 7010 N. Lake Blvd. Tahoe Vista

[TahoeAdventureCompany.com](http://TahoeAdventureCompany.com)

**530.913.9212**







# Tennis & Pickleball Center

## TENNIS & PICKLEBALL CENTER UPDATE

It is going to be a bustling summer at the Incline Village Tennis & Pickleball Center. The renovation is coming to a close, and the center looks fantastic! Make sure to carve out some time after your match to enjoy some sun and good conversation on our spacious new deck.

This season, expect to see many familiar faces, as most of our outstanding teaching and Pro Shop staff will be returning. The Pro Shop is open, and is fully stocked with brands including Wilson, Head, Lucky in Love, Under Armour, and many more. The beginning of the season is the perfect time to get your racket restrung and regripped by one of our professionals on staff. Or, if you are in the market for a new racket, we have a great selection hanging and available to demo.

If you prefer a paddle to the racket, or like to dabble in both tennis and pickleball, we have great news: In April, the IVGID Board of Trustees voted to convert Court 9 to pickleball, so the center now sports 12 permanent pickleball courts. Open play is happening every day and I have to warn you, it is addicting.

We are thrilled that our youth programs are returning this summer! The teaching staff is excited to meet and coach your kids. We also offer exceptional adult instruction through a wide array of clinics, mixers, tournaments, and private lessons for both tennis and pickleball players.

The whole staff is delighted to welcome you back to the Tennis & Pickleball Center and we cannot wait to see you on the courts.



## SUMMER SOCIAL MIXERS & TOURNAMENTS

Please visit [InclineTennis.com](http://InclineTennis.com) for registration details for these summer programs.

### Breakfast at Wimbledon Mixer

Wear your tennis whites in the Wimbledon tradition and join us for a fun doubles round robin!

**Date:** Saturday, July 10

### Incline Tennis Open & Incline Pickleball Open

These are THE local tournaments of the year. Win bragging rights as the best player in town as well as great prizes. The Incline Opens are fun-filled competitions for players of all skill levels. Men's, Women's, and Mixed, with Singles and Doubles divisions for players levels 3.0 - 5.0.

**Tennis Open:** August 6 - 8 (Friday - Sunday)

**Pickleball Open:** August 13 - August 15 (Friday - Sunday)



*Kerrie Tonking*

Kerrie Tonking,  
Operations Supervisor,  
Tennis & Pickleball Center







# PUBLIC SAFETY OUTAGE MANAGEMENT

## Be Prepared for Wildfire Season

Safety is our priority, especially during wildfire season. PSOM is a last resort to protect our customers from the risk of wildfires. Visit [nvenergy.com/psom](https://www.nvenergy.com/psom) to learn more and sign up for outage alerts.

## NO SINGLE FACTOR DRIVES A PSOM EVENT



**WEATHER CONDITIONS**  
Temperature, wind gusts, humidity levels, etc.



**DRY VEGETATION AS FUEL AND ASSOCIATED ENERGY**



**FIELD OBSERVATIONS**



**LOCATION OF ANY EXISTING FIRES**



**INFORMATION FROM FIRST RESPONDERS**







# Tennis & Pickleball Center



## NEWLY-REMODELED TENNIS & PICKLEBALL CENTER

Sitting along a year-round babbling creek, the newly-remodeled Incline Village Tennis & Pickleball Center offers eight tennis courts, 12 permanent pickleball courts, and a fully-stocked Pro Shop. The center is located adjacent to the Recreation Center off of Incline Way.

Last fall and winter, the Tennis & Pickleball Center underwent a major renovation, with a brand-new patio area, upgraded restroom facilities, and a much-improved customer experience. We'd like to invite the entire community to come see what the new facilities are like.

Clinics, socials, mixers, tournaments, and youth camps are offered throughout the summer months, welcoming locals and visitors alike. Our professional and friendly staff is available to arrange your next game, find you a perfect hitting partner, or answer any racket, stringing or tennis/pickleball gear questions that you may have. We look forward to hitting the courts with you this season!

### Season-Long Membership Passes

Season-long Tennis & Pickleball Membership Passes are available. Membership passes are available for purchase at the Tennis & Pickleball Center or Recreation Center. Call the Pro Shop at 775.832.1235, or visit [InclineTennis.com](http://InclineTennis.com) for more information.

*Note: There are days the courts will be limited or unavailable due to tournaments and other events. Please take that into consideration when purchasing your membership pass. All membership passes include Pickleball play.*

**Court Reservations: Call 775.832.1235**

**or stop by the Tennis & Pickleball Center to reserve your time.**

# HIGHEST *Quality* CANCER CARE

**Leading the way in rural cancer treatment through highly-skilled, compassionate care**

*The very latest technology, the most current treatment options, and extensive support programs, offering a whole-person approach.*



Offering Varian TrueBeam



GENE UPSHAW MEMORIAL  
TAHOE FOREST CANCER CENTER

10121 Pine Avenue  
Truckee, CA  
(530) 582-6450  
[tahoeccancercenter.com](http://tahoeccancercenter.com)





# Sold HOMES IN LAKE TAHOE, NEVADA



## CRYSTAL BAY LAKEFRONT

Exquisitely remodeled Crystal Bay home on .40 acres with 102' of lakefront, a shared pier with adjustable catwalk, two buoys, and beach area.

**LivingTahoe.com Represented Buyer | SOLD by Tanya \$6,350,000**



## WALK TO BURNT CEDAR BEACH

Filtered lake views and single level living design and luxury in the highly desirable Lakeview Subdivision of Incline Village.

**LivingTahoe.com Represented Buyer | SOLD by Tanya \$5,250,000**



## PANORAMIC LAKE VIEWS

Majestic mountain location. Retro modern vibe makes this home incredibly unique and offers high quality construction and custom finishes throughout.

**LivingTahoe.com Represented Buyer | SOLD by Tanya \$2,562,500**



## WORK FROM HOME IN TAHOE

Enjoy today's Tahoe's Lifestyle, with beauty, form and function in Incline Village.

**LivingTahoe.com Represented Buyer | SOLD by Tanya \$1,323,000**



## LAKE AND MOUNTAIN VIEWS

Turn-key, remodeled home in Incline Village with luxurious master suite and lush landscaping. Steps to hiking trails.

**LivingTahoe.com Represented Buyer | SOLD by Tanya \$1,700,000**

*"We've worked with Tanya through 3 real estate transactions and each time it has been a seamless process...we were in escrow in the first day on the MLS and closed within 14 days. Her negotiation skills are remarkable and we couldn't recommend Tanya more. She's an outstanding agent. Thank you!"*

**- Kelly K., Incline Village, Lake Tahoe, NV**



## TANYA SOULE

REALTOR® | CLHMS® | SRS® | ABR® | RSPS®  
LUXURY HOME MARKETING SPECIALIST  
INCLINE VILLAGE REAL ESTATE. ELEVATED.  
NV S.0170786

775 690 2341

[tanya@LivingTahoe.com](mailto:tanya@LivingTahoe.com)

[LivingTahoe.com](http://LivingTahoe.com)

Incline Village office: 917 Tahoe Blvd., Ste. 100

**CHASE**  
INTERNATIONAL  
LUXURY LEADER





# TENNIS LESSONS & DAILY ADULT TENNIS CLINICS

## Private & Group Lessons

Private, semi-private, group and clinic lessons are available seven days a week. All teaching professionals are USPTA certified. Please call the Pro Shop at 775.832.1235 for appointments, pricing, and information.

## Beginner Tennis Clinics

Have you always wanted to play but don't know where to begin? We can help you with the basics to get you started.

**Days:** Monday & Saturday, 11am - 12pm

## Extreme Drill and Play 4.0+

High-paced drill for the top player, conditioning drills and points, serve and return practice and match play.

**Days:** Fridays, 10am - 12pm

## Cardio Tennis Clinic

This clinic combines aerobic activity with tennis fundamentals. Guaranteed to get the heart-rate up!

**Days:** Tuesdays, 10am - 11am

## Ladies Doubles Clinic (3.0+)

Come out for a clinic and match play with coaching and finish up with a beverage and good conversation. Reservations required.

**Days:** Thursdays, 5 - 6:30pm

## Mens' Day Doubles Round Robin (3.0+)

This program is designed to bring members and guests together in a competitive and social session of round robin doubles play. All levels of play are welcome.

**Days:** Thursdays, 10 - 12pm

## Wednesday Night Mixed Doubles

Come play a friendly round robin with a different partner every time you switch. Stay after the game for a social drink! Reservations required.

**Days:** Wednesdays (June 2 - August 25), 5pm - 7pm

# YOUTH TENNIS & PICKLEBALL PROGRAMS

## Junior Afternoon Clinics

A perfect opportunity to develop the aspiring tennis player! Check our website for session dates. Enrollment is available in monthly sessions. Drop-ins are permitted if space is available.

## Mini-Munchkins

**Ages:** 4-6

**Days:** Monday & Thursday, 3 - 3:30pm or 3:30 - 4pm

## Munchkins

**Ages:** 6-7

**Days:** Monday & Thursdays 4:15 - 5pm



**HOLM**  
 Interior & Exterior Work  
*We make your home better.*

775.298.2727 | [HolmConstructionTahoe.com](http://HolmConstructionTahoe.com) NV #81893 CA #941072



# Tennis & Pickleball Center



## USTA Quick Start Youth Tennis Camps

Weekly tennis camps focus on stroke production, techniques, match play and tennis rules through specialized activities and drills. The camp also promotes teamwork, sportsmanship and a high emphasis on fun! Camps are taught by certified USPTA instructors. Other activities in the camp may include other fun games and activities. Daily drop-ins allowed based upon availability. One week sessions. Sessions run June 21 - August 19.

**Ages:** 6 - 12

**Days:** Mondays - Thursdays

## Competitive Junior Tennis Academy

This high powered, intense program is designed for the athlete looking to take their game to the next level. Players seeking to compete in tournaments as well as high school and college tennis will find this program is exactly what they need! Daily drop-ins allowed upon availability. One week sessions. Sessions run June 21 - August 19.

**Ages:** 8 - 11 & 12+

**Days:** Mondays - Thursdays

## Youth Pickleball Skills League

New this year, this program is designed to teach pickleball strategy, techniques, and rules through drills and lots of gameplay. Players will compete against other teams in this fun and competitive program.

See [inclinepickleball.com](http://inclinepickleball.com) for details.



## CUSTOM HAT BAR

Come in and make your own custom hat! With over 120 labels, 45 flags, 30 embroidery colors and 30 hats the possibilities are endless!

Located at the Rock in Truckee and in the Village at Northstar

Mention this ad for **20% off your purchase** at either of our hat bar locations

Making a Difference

**VILORIA, OLIPHANT, OSTER & AMAN** L.L.P.  
Attorneys and Counselors at Law

SERIOUS PERSONAL INJURY  
WRONGFUL DEATH

OVER 100 YEARS OF COMBINED LEGAL EXCELLENCE

Martindale-Hubbell: AV Preeminent Peer Review Rated

775.284.8888  
327 CALIFORNIA AVENUE  
RENO, NV 89509

[renonvlaw.com](http://renonvlaw.com)





# Tennis & Pickleball Center

## SUMMER PICKLEBALL

Pickleball is the fastest growing sport in Incline Village. It is easy to learn but difficult to master. It is fun and moderate exercise at all levels of play. Drop in to rotate into games with new and experienced players.

Pickleball paddles are available in the pro shop to buy. First time players must take an Introduction to Pickleball Clinic before attending drop-in play. Coaching and player development clinics are also available. Adult Drop-In Play Times are available. Visit [InclinePickleball.com](http://InclinePickleball.com) for more details.

### Adult Drop-In Play

Daily at 9am; plus Tuesdays & Thursdays at 4:30pm.

### Beginner Pickleball Clinic

Have you always wanted to play but don't know where to begin? We can help you with the basics to get you started.

**Days:** Monday & Saturday, 12:15 - 1:15pm

### Weekly Pickleball Clinic

All clinics consist of a combination of demonstration of technique, cooperative drills, and play situations. Topics covered will include serving, footwork, blocking, dinks, drop shots and more.

**Days:** Tuesdays, 8 - 9am & 6 - 7pm

### Pickleball for Tennis Players

Pickleball ISN'T mini-tennis. However, your tennis skills give you a unique advantage in this game if you know how and when to use them. This session is designed for tennis players who have at least hit a pickleball before.

**Dates:** TBD, see [www.inclinepickleball.com](http://www.inclinepickleball.com)

### Save the Date:

Aug. 28-30: Engage Pickleball Camp

Sept. 7-9: Fall Camp with Tony Roig

Sept. 11: Cal-Neva Cup



Discover.  
Explore.  
Join.

Entrepreneurs Organization  
For more information email [admin@eort.org](mailto:admin@eort.org)



Reno Tahoe [eonetnetwork.org](http://eonetnetwork.org)



**BOOK NOW**  
**EXTERIOR**  
PAINTING & STAINING



**KellyBrothersPainting.com 530.550.0806**  
Bonded & Insured CA LIC #822843 | NV LIC #68238

# 2021 SUMMER JOBS

## *Experience Your True Tahoe*

### *Great Locations & Perks!*

*Perks may include free or discounted access to our venues plus discounts on food and beverages.*

#### **PARKS & RECREATION:**

- Lifeguards & Swim Instructors
- Beach Hosts & Parking/Boat Ramp
- Parks Maintenance Staff
- Tennis Hosts

#### **FOOD & BEVERAGE:**

- Dishwashers
- Prep Cooks & Cooks
- Golf & Beach Snack Bar Attendants
- Servers

#### **GOLF COURSES:**

- Golf Shop & Merchandise Staff
- Outside Services Staff
- Starter/Rangers
- Grounds Maintenance Staff

**VIEW FULL LIST OF AVAILABLE POSITIONS ONLINE. (EOE)**



*Apply online:*

**YOURTAHOEPLACE.COM/JOBS**

IVGID • 893 Southwood Blvd, Incline Village, NV 89451

Contact: [jobs@yourtahoepace.com](mailto:jobs@yourtahoepace.com) • 775-832-1100



**GENERAL IMPROVEMENT DISTRICT  
ONE DISTRICT ~ ONE TEAM**





## MOUNTAIN GOLF COURSE

### Welcome Letter From Ashley Wood, Head Golf Pro

The 2021 golf season is finally here and I am looking forward to all the great things this year has to offer. As a young player and during my college years, I was always told how lucky I was to have picked up this sport, as it was going to provide me with many opportunities: I would meet wonderful and influential people along the way, and would be able to enjoy playing golf for a lifetime. And this last year has really allowed me to appreciate those aspects of the game.

I am very grateful that golf has brought us together in times where we were told it's only safe to be apart. My family knew I was going to be a golfer when I beat them all at mini golf at the age of 2, but I don't think they knew how impactful this game would be on my personal well-being, and how much I'd enjoy being a part of growing the game and increasing others' happiness and wellness through the game of golf.

This winter in Tahoe happened to be one of my favorite winters yet. It probably has to do with the fact I recently adopted a puppy from the Pet Network Humane Society here

in Incline Village; but snowshoeing and hiking, doing some road trips to play golf, camping and exploring with the puppy, building fires and having the quiet nights at home, and enjoying skiing and snowboarding at Diamond Peak ended up being a GREAT alternative to all the traveling I had planned for this last off-season. Now that summer is here, I can't wait to see more people and get back out in the community.

I'm happy to announce we will be bringing a lot of our fun social events back to the Mountain Course (with some modifications), and we can finally enjoy the renovated clubhouse. As mentioned last year, I think the deck at the Mountain Course is one of the best places in Incline Village to hang out - whether you're looking forward to some golf fitness classes, the return of our famous Nine & Wine events, or the great happy hour specials after a round of golf. I hope to see you all enjoying this wonderful newly-remodeled facility this summer!

My golf tip I'll leave you with is about balance - finding balance in your life, diet, on your paddleboard, and in your golf swing will bring strength to your body and mind. Without balance, you won't be able to find the center of the clubface, and you'll likely find yourself precariously trying to balance on a rock while trying to retrieve your ball from one of the creeks running through the Mountain Course.

No one wants that feeling, so start each swing by engaging your core at set up and holding your club with a loose grip. As you swing down towards the ball, transfer your weight to your forward foot and hold the finish like someone is going to be taking your picture. (And if you see Jake - our Video & Photo Coordinator - on the course this summer, be sure to smile as well!)

For more in-depth golf tips, please check out our Golf Courses of Incline YouTube channel! And if you have a tip you'd like to see our golf pros explain for you, send us a note!

I hope to see you on the course, happy and healthy!

*Ashley Wood*

Ashley Wood, PGA  
Head Golf Professional

The Mountain Course at Incline Village



### Ashley Wood

Ashley Wood is the Head Golf Professional at the Incline Village Mountain Golf Course and a certified fitness professional. Ashley grew up in Lake Tahoe and learned to play golf at the Incline Golf Courses. She previously served as the Head PGA Professional and Director of Fitness at the prestigious Presidio Golf & Concordia Club in San Francisco, from 2016-2019. She played golf at San Diego State University and attended graduate school there earning a Master's Degree in Kinesiology with emphasis in athletic development and sports and exercise psychology. Ashley has a passion for helping others live a happy and healthy lifestyle through the game of golf. To contact Ashley, email [aew@ivgid.org](mailto:aew@ivgid.org) or call 775.832.1339.



## CHAMPIONSHIP GOLF COURSE

### Welcome Letter From Kyle Thornburg, Senior Head Golf Pro

The 2021 Golf season is here and we couldn't be more excited! Golf has been a great avenue for people to get out of their houses and we've seen new golfers, returning golfers and our core golfers all enjoy more of the sport than ever before. We expect this trend to continue in the 2021 golf season.

Grounds Superintendent Jeff Clouthier and his team have been working

throughout the spring and early summer to get our beautiful golf courses in the best possible shape. We're happy to have returners along with some new faces on our maintenance crew for 2021.

We are excited to welcome back our PGA Professionals. Mountain Course Head Golf Professional, Ashley Wood, PGA ; Director of Instruction, Neil Gunn, PGA; 1st Assistant Golf Professional, Rob Bruce, PGA; and our newly-inducted PGA Member and returning Golf Shop Lead, Ryan Konrad, PGA. All of our PGA Professionals on staff are always here to help with any questions or concerns our residents may have. Ryan Konrad will be leading our newly revamped Junior Golf Program.

We are looking forward to seeing all of our returning golfers and meeting some new golfers this year as well! For all of our new residents or new golfers, feel free to give us a call or stop by the golf shop with any questions you may have.

Lastly, a PGA tip: Don't forget to smile when you're playing golf.

*Kyle Thornburg*

Kyle Thornburg, PGA  
Senior Head Golf Professional



### Kyle Thornburg

Kyle Thornburg joined the Incline Village Golf Team in 2013 as the Tournament Coordinator/ Assistant Golf Professional. Kyle played four years of high school varsity golf, then two years at the collegiate level while attending Monterey Peninsula College. Kyle has worked for some of the top golf courses in the world, including Cypress Point Golf Club and The Arizona Country Club. Kyle graduated from The Golf Academy of America in 2011 and received his Class A, PGA Membership, in 2015. To contact Kyle please email [kwt@ivgid.org](mailto:kwt@ivgid.org) or call 775.832.2981.



Check out our NEW expanded showroom in the Village Center!



Call for a FREE in home consultation!

**(775) 831 -2204**

[www.sierraverdegroupp.com](http://www.sierraverdegroupp.com)

LOWER VILLAGE CENTER

797 Southwood Blvd.  
Incline Village, NV



Home Design Center



## 2021 GOLF PRACTICE FACILITIES

The Championship Course offers excellent facilities to practice your swing or your short game including a driving range, chipping green and putting green. We recommend getting to the course early to warm up at each practice station and relax before hitting the course.

### Driving Range Rates

<b>2021 Driving Range Rates</b> Purchase tokens inside the Championship Golf Shop	
Small Bucket/22 balls w/IVGID pass	\$7 \$5
Medium Bucket/44 balls w/IVGID pass	\$12 \$10
Large Bucket/66 balls w/IVGID pass	\$17 \$15
<b>Driving Range Passes are also available with bonus credit</b>	
\$100 for \$110 credit	
\$200 for \$230 credit	
\$300 for \$360 credit	

Golf Season Range Hours: 45 minutes before first tee time - 5:30pm  
*(Note: The range closes every other Wednesday at 5pm for maintenance)*



hybrids, fairway woods, driving, course etiquette, and rules. Get Golf Ready Level 1 is for those who are new to golf or returning after many years.

Get Golf Ready Level 2 is available for Get Golf Ready 1 graduates or golfers who have played two or more years. View current schedule, pricing and details on the Get Golf Ready Page on GolfIncline.com.

### Junior Get Golf Ready Clinics

We are excited to be able to offer Junior Get Golf Ready Clinics for the 2021 golf season, focusing on the same fundamentals that the regular Get Golf Ready series covers. The new format of our summer Junior programs will include smaller groups and more focused golf training for beginner to intermediate golfers. Please see [www.golfincline.com](http://www.golfincline.com) for full details and pricing.

If this program fills up or does not fit the needs of your child, individual private lessons are also available. All registrations must be made by calling the Golf Shop at the Championship Course at 775.832.1146.

### PGA Junior League

PGA Jr. League brings friends and family together around fun, team golf experiences with expert coaching from PGA and LPGA Professionals. The program is a healthy activity that gets kids outdoors, and its scramble format builds confidence and encourages sportsmanship among boys and girls of all skill levels.

For more information about the PGA Junior League, visit the PGA Junior League page at [GolfIncline.com](http://GolfIncline.com). The 2021 program has already begun. Look out for 2022 registration next May.

## 2021 GOLF CLINICS, LESSONS, & PROMOS

### Golf Academy Clinics & Lessons

Some programs and lesson options may be modified or canceled for the 2021 season due to current restrictions.

### Private Lesson Options

- Half Hour Lesson
- Three (3) 1-Hour Lesson Package

### Custom Clinic Series

Create your own clinic with a group or friends, coworkers, etc. These clinics are designed for groups of 4 to 8 people. Can be a one-time event or weekly with topics agreed upon prior to clinic.

### Get Golf Ready Clinics

Meet other players with similar playing levels while learning the fundamentals of golf in a fun and non intimidating environment. Get Golf Ready is a series designed to teach everything you'll need to play golf in five lessons. Each lesson will focus on essential golf skills. Topics covered include putting, chipping, short iron shots, long irons,



## EASING INTO THE 2021 GOLF SEASON

### Welcome letter from Neil Gunn

There are many things you need to do at the start of the golf season in order to make it a successful year. First of all you need to evaluate your equipment. This step involves determining if it is time to get some new golf clubs, maybe some new wedges, irons, a driver, or a complete set, because there is no better time to update your clubs than the beginning of the golf season. If you need help with an evaluation or how to make a purchase, the golf professionals at the Championship Course Golf Shop can help you get the correct equipment for you.

Maybe you just need to get new grips for your existing clubs. Also part of your equipment is your golf attire, and you need to be prepared for the cool weather we often experience in the mountains. You don't want lots of layers and heavy coats. These days, many companies have light thermal wear to keep you warm while not restricting your flexibility. There are warm weather gloves you can wear as well. A new bag might also be needed or just nice to have.

Next you should set some goals for your play this season, whether that means overall game improvement, getting better in specific situations (e.g. putting from distance), or even fitness goals that will allow you to enjoy the game more. The teaching professionals here at the Incline Village Golf Courses are dedicated to helping you improve your game through private instruction and/or clinics. Maybe you want to join a local golf club as a way to play more golf and meet new friends.

Preparing your body early will help with your flexibility and also helps avoid injury. Get in the habit of doing some golf-specific warm ups and stretching exercises before every practice session and round of golf this year. Yoga and Pilates are also excellent for your golf swing efficiency and overall health.

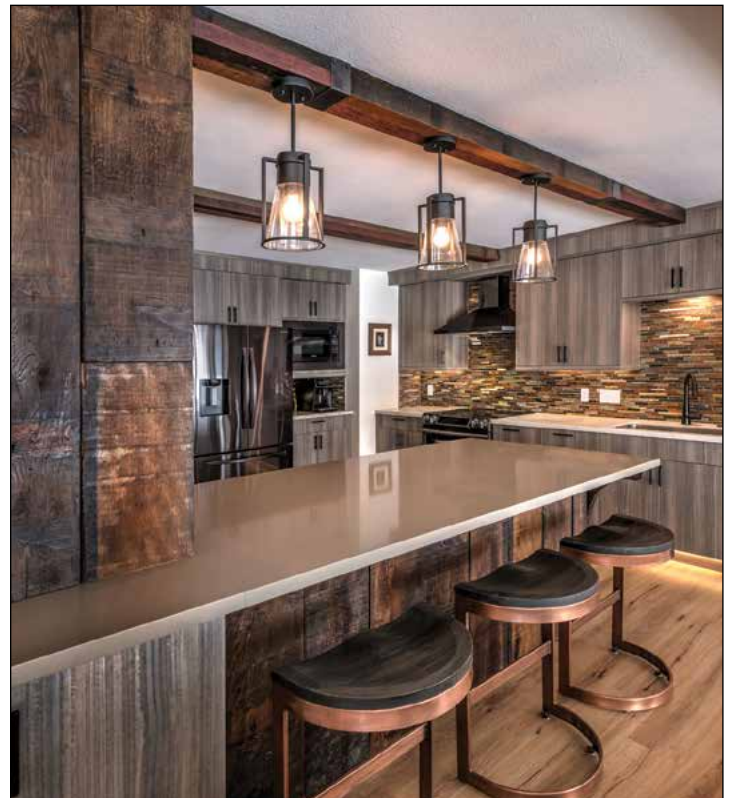
Set aside time to practice your golf swing. Just playing golf doesn't make your swing better. Dedicated positive practice time helps you improve your technique, which gives you more confidence on the course. Remember that 70% of the game is within 100 yards to the pin so that should be 70% of your practice time. By taking these steps you can enjoy a great 2021 season.

See you on the courses!

*Neil Gunn*

Neil Gunn,

Teaching Professional, Incline Village Golf Academy



[www.AspenLeafInteriors.com](http://www.AspenLeafInteriors.com) | 530.338.1088 | [design@alifirm.com](mailto:design@alifirm.com) | CID#6680



ASPEN LEAF  
INTERIORS  
BY MARIO DECKER





## WHAT'S HOT IN THE GOLF SHOP

Our Golf Shop Merchandiser, Genevieve Hoffee, offers a few thoughts on what's new and exciting in the world of golf merchandise and apparel for the 2021 golf season.

**Golf ball tech keeps getting better:** Titleist released new balls this year, and the Championship Course Golf Shop now carries Titleist golf balls exclusively. Come check out the selection of Pro V1, Pro V1x, Pro V1 Left Dash and other great Titleist balls with specific performance characteristics that our Golf Pros can match to your needs. Come in and have a conversation about which ball will help you play better golf today!

**Walking accessories are hot:** Walking the golf course is a trend that we're seeing more and more. What better way to get some exercise and enjoy the walking experience than with a new push cart? Come see the new offerings from Sun Mountain and MGI push carts in the shop.

**Golf bags are in stock:** Golfers may have heard that there is a national shortage of golf bags, with many companies back ordered until late fall. But the Golf Shop has many different

bags in stock right now, so come shop while we have great inventory from Titleist, Ping, TaylorMade and Glove-it.

**Golf club sets are hard to find as well:** If you are looking for a complete set of golf clubs this season you could have issues finding brands that are not sold out or on back order. We have Cobra complete sets in stock now.

We're excited to offer these featured apparel brands this season:

### Men's Apparel

- Criquet
- FootJoy
- Greg Norman
- Nike
- Peter Millar
- Travis Mathews

### Women's apparel

- Swing Control
- San Soleil
- Lucky in Love
- FootJoy
- Foray
- Nivo
- GGBLue

NOW OPEN IN INCLINE VILLAGE

FASCIA LAB Tahoe

FACE & BODY ENDERMOLOGIE®

slim your body and tone your skin wherever you want!

NON-INVASIVE, ZERO DOWNTIME  
ELIMINATES CREPEY SKIN  
SPOT REDUCES UNWANTED BODY FAT

Mention this ad for discount

Text 858.663.1090 for appointment  
913 Tahoe Blvd. #11, Incline Village

FASCIA LAB TAHOE

ORLANDO ENTERPRISES TAHOE, INC.

(775) 831-5567  
(530) 546-5567

Building Quality Homes Since 1978

-Design Build-  
-Competitive Pricing-

NV Lic # 0019856 - CA Lic # 876563

www.orlandoenterprises.com



**BRAD UNDERWOOD**  
 Director of Public Works

Our new Director of Public Works, Brad Underwood, started working for IVGID on March 15, 2021. "I am

looking forward to further engaging with the IVGID team and getting to know the community," Brad said.

He is also excited about working on the many infrastructure projects, including key projects such as the Burnt Cedar pool and the Effluent Export line.

Brad brings a great deal of experience to the District after serving three different California cities: Bakersfield, Foster City and San Mateo, over a total of 34+ years. He served as Director of Public Works in San Mateo for 6+ years, and prior to that in Foster City for 21 months. His Public Works career began in Bakersfield where he worked in various capacities throughout the Department in both engineering and maintenance over a 26+ year period, lastly serving as Assistant Public Works Director. Prior to his public career Brad worked for a small construction company and then a small engineering firm.

Brad has a passion for Public Works, working as a team, mentoring staff and serving communities. A member of the American Public Works Association for his entire career, he has served on boards at the local level and on a committee at the national level.

He earned his bachelor's degree from Cal Poly, San Luis Obispo and is both a licensed Civil Engineer and Land Surveyor in the State of California. While at Cal Poly he also competed on the Track and Field team in the hurdles and relays and is a two-time All-American.

Brad met Vickie, his best friend, wife and travel partner while at Cal Poly. Traveling is a passion of theirs, visiting faraway places in the South Pacific, Caribbean, Europe and Africa. Together they raised two daughters, Krystal and Sarena. Krystal lives in Kenya with her husband Chris, serving as missionaries; they have two boys, Elijah and Liam. Sarena, a middle school math teacher and athletic coach, lives in Waco, Texas with her husband Cory, a doctor in residency, and their daughter, Hazel. Family is important to Brad and Vickie, especially with the grandkids, and they try to get together whenever possible. When not at work, he enjoys running, camping, golfing, hiking, snow and water skiing and paddleboarding.



**MARTY WILLIAMS**  
 Controller

Marty Williams, our new Controller, came to IVGID in January. Marty has over 25 years of accounting experience, including more

than 10 years of governmental finance experience. He is a Certified Public Accountant and a Certified Governmental Financial Manager.

His last position was with Washoe County where he assisted with the Comprehensive Annual Financial Reports, managed the fixed assets, and provided his accounting experience to the departments he was assigned to assist.

Marty lives in south Reno with his wife and two daughters. He enjoys skiing, hiking, camping, traveling, and driving his ATV. He is excited to be part of the team here at IVGID and to learn more about the community and how he can help in IVGID's continuing success.

**PAIN RELIEF**

Acupuncture, Cupping, E-Stim, Herbs

Relieve Pain Caused By:

- Injury - Arthritis - Peripheral Neuropathy
- Muscle Soreness - Menstrual Cramps
- Sciatica - Pinched Nerve
- CRPS - Anxiety - Depression



Pamela Murphy Acupuncture

907 Tahoe Blvd #5, Incline Village, NV

(775) 799-5479 | [www.pammurphyac.com](http://www.pammurphyac.com)



## OUTDOOR FUN

Are you new in town or looking for new outdoor activities to enjoy with family and friends this summer? Incline Village has some amazing outdoor venues that are free and open to the public, thanks to partnerships with organizations and locals who are passionate about recreation. We reached out to residents who frequent our outdoor spaces in the heart of Incline including the new Bocce Ball Park, North Tahoe Lions Club Disc Golf Course, Robert & Robin Holman Family Bike Park, Incline Village Fitness Trail, Incline Skate Park and more. Read why they love these venues and then plan on adding some of these activities to your “Summer Bucket List.”

Visit the Outdoor Recreation section on [InclineRecreation.com](http://InclineRecreation.com) for more information about these venues.



“The Incline Village Disc Golf Course offers a great way to recreate outside and enjoy fresh mountain air and nature most of the year, free of charge. Have fun with friends and families, regardless of age or skill levels, while improving eye hand brain coordination and working toward your personal best.”  
 - David “Fez” Duffié  
*(Founding Member of the Incline Disc Golf Association)*



“As Incline Village locals, we are so incredibly grateful to have access to the amazing IVGID recreation venues. One of our favorites is the Robert & Robin Holman Family Bike Park – which caters to all levels, especially the smallest of riders. My 4-year-old gained confidence and balance on his strider bike last summer, and we look forward to taking him again this summer now that he is on a pedal bike. Between the shaded picnic tables, and bike park features that cater to all levels, the Incline Bike Park is one of our family’s top choices for where to spend the day.” - Aly Nugent



“We have been enjoying the new bocce courts by the Rec Center. It is a nice place to hang out after work, we bring snacks and drinks and play a few games in the evening during the summer. We like that it is less crowded there than the court at the beach.”  
 - Jon Tekulve



## LAKE TAHOE SCHOOL



**Small School. Big Education.**

PreK-8th Grade • Independent • Fully Accredited

**Inquire now for the 2021-2022 academic school year.**

775.831.5828 • [www.laketahoeschool.org](http://www.laketahoeschool.org) • [knugent@laketahoeschool.org](mailto:knugent@laketahoeschool.org)

995 TAHOE BOULEVARD, INCLINE VILLAGE, NEVADA 89451

## TESTIMONIALS FROM VENUE USERS



"IVGID Parks takes our small town to the next level from disc golf to the new pump track. Never short of something active to do with my friends or with the youth group."  
- Gabe Cheadle



"I want to thank IVGID for the new bocce courts located at the Rec Center. They are outstanding. I also give the members of the Bocce Boyz club a shoutout for their continued support of the project." - Jim Brockman



"From afar, the skate park seems to be just concrete and metal in the shape of a swimming pool. While this may be true, there is a lot more going on behind the scenes. From young ones getting the thrill of their inaugural tricks, to adults who enjoy the sense of community and friendship. There is something for everyone at the Incline Skate Park." - Cedar Gately  
(Coach Cedar, Village Skate School)

"The new bocce courts by the Incline Village Rec Center are a much appreciated addition. Thank you IVGID. Last summer/fall 2020 I would meet friends on Friday evenings after work to play a few games. There was always a gathering of several groups. It was quite fun to meet new people who love bocce as much as I do. Someone would play music and everyone would bring drinks. A great ending to the work week. I can't wait for it to start up again. The courts are in a perfect location and well kept. They even provide rakes so we can get the course ready for play." - Wendy Hummer

## CORMAN GROUP



### NEW CONSTRUCTION IN MILL CREEK

**135 Selby Drive | \$9,950,000**

6037 square feet on .44 Acres. 6 bedroom, 6.5 bath. 3-story, ultra contemporary mountain modern design with extensive use of glass and steel. Walk-in refrigerator. Tahoe toy garage. See 135Selby.com for more.

*Photos are artist renderings.*

### UPDATED COZY TREEHOUSE

**981 Wander Way | \$2,495,000**

Professionally decorated "turn-key" home with South facing filtered Lake Tahoe and sunrise/sunset mountain views. Surrounded by forest service land, year round creek, hiking trails and waterfalls. Offered fully furnished.



### CORMAN GROUP | JEFFREY CORMAN

CONCIERGE REALTOR®/ADVISOR

775.339.1144 | Jeff@eXpIncline.com  
www.liveincline.com

901 Tahoe Blvd. Suite 5  
Incline Village, Nevada 89451



NRED S174475





# IDEAS WE ADORE AT ASPEN GROVE

For summer weddings and special events, Aspen Grove offers a one-of-a-kind venue along a year-round creek, with mature aspen trees that offer numerous decorating options. We've highlighted a few of our favorite accents from recent weddings held at Aspen Grove.

- Show your personality (and your guests to their seats) with unique table numbers.
- Consider vintage touches to display your wedding cake.
- Make your special day memorable with unique wedding favors.
- Share your journey together by displaying your favorite pictures.

If you have any questions or would like to plan a wedding or event at Aspen Grove this summer or next, please give us a call at 775.832.1240 or visit [InclineWeddings.com](http://InclineWeddings.com).



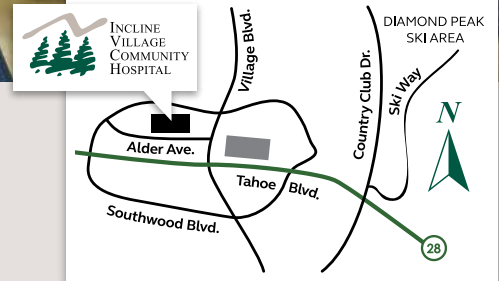
Photos courtesy of Bourdon and Co. Photography, Calvin Hobson Photography



## Open 7 Days a Week, 24 Hours a Day

Located in the heart of Incline Village, **Incline Village Community Hospital** offers year-round, 24/7 emergency care to the North Lake Tahoe area and a wide range of high-quality healthcare services.

- 24-Hour Emergency Care with Board Certified Physicians, Registered Nurses, and Medical Technicians
- Surgical Services
- Diagnostic Imaging and X-Ray, with state-of-the-art CT Scanner
- Incline Health Center, offering primary care, pediatrics, family medicine, orthopedics, cardiology, ear nose and throat, and behavioral health specialties, and primary care clinic with walk-in and same-day appointments
- Laboratory Services



- Physical Therapy and Medical Fitness
- Health, Wellness, and Community Education Programs
- Hospice and Home Health Services
- Charitable giving and volunteer opportunities available through the IVCH Foundation and Hospital Auxiliary

Your Community.  
Your Hospital.



**INCLINE VILLAGE COMMUNITY HOSPITAL**





# EPICS

---

## PHOTO BOOTH

---



*Ready when you are!*

**WHEN YOU'RE READY TO CELEBRATE, WE'LL BE READY TOO.**

**MAKE YOUR NEXT PARTY OR CELEBRATION AN EPICS EVENT!**

ADD A PHOTO BOOTH TO YOUR NEXT PARTY, WEDDING, OR EVENT.  
[WWW.EPICSPHOTOBOOTH.COM](http://WWW.EPICSPHOTOBOOTH.COM) - 530-536-0455





- Solidifies paint for proper disposal
- Use on water or oil-based paint, stain & solvents
- Simple to use: just add to the can and stir
- Solidifies within minutes



www.spillhero.com

IVGID Public Works is now offering free packets of Xsorb Rock Solid Paint Hardener. It is a powder you add to latex and acrylic house paint, which accelerates the process of drying out the leftover paint in the can. Once dry, the hardened paint can be disposed of in the trash.

Latex paint is not technically a hazardous waste, but it can destroy the biological processes happening in the District's wastewater treatment plant if dumped down the home plumbing drain.

## HOUSEHOLD HAZARDOUS WASTE PROGRAM UPDATE

IVGID Public Works' Household Hazardous Waste (HHW) and Electronic Waste Program is open to residents on Tuesdays, by appointment only; now to mid-November.

Got unwanted paint? We've got free paint hardener to ease disposal! As an alternative to latex/acrylic paint drop-off,

Latex paint recycling is only successful with full containers and is a significant program cost for the community's Household Hazardous Waste program. So save yourself the hassle of scheduling an appointment to drop off half-empty paint cans, and come get the free paint hardener packets.

Oil based paints and paint solvents are flammable and toxic, so these should always be brought in (by appointment) for proper disposal. Schedule an appointment at [www.IVGIDHHW.org](http://www.IVGIDHHW.org) or call 775.832.1284.



Book our mobile bar for your next event, Anywhere!



**DUSTY BOTTLE**  
 AIRSTREAM MOBILE BAR CATERING

.....

**CONTACT US**  
 (775) 525-1406  
[WWW.DUSTYBOTTLEBAR.COM](http://WWW.DUSTYBOTTLEBAR.COM)  
[INFO@DUSTYBOTTLEBAR.COM](mailto:INFO@DUSTYBOTTLEBAR.COM)



## LOCAL HEROES 4TH OF JULY WEEKEND & PARADE

Although there are no fireworks this year, Incline Village will still be celebrating the 4th of July weekend with the theme of “Local Heroes.”

The Local’s Heroes Parade on July 3 will feature traditional heroes like veterans, firefighters, and Washoe County Sheriff peace officers, as well as the health care workers,

educators, and service workers. In addition to floats, there will be a bike parade, classic cars, dogs, and an assortment of fire and rescue vehicles. It is a collaboration between the Incline Village Community and Business Association, Rotary Club of Tahoe-Incline, and Washoe Sheriff’s Office. The parade will run along Incline Way, starting at Bowl Incline and ending at Sierra Nevada University on Country Club Drive.

The Washoe Sheriff’s Office is holding a Meet and Greet directly after the parade at Sierra Nevada University, complete with parade vehicles and deputies from the Incline Substation.

Other events in the “Local Heroes 4th of July Weekend” include two pancake breakfasts and a 10k race. The North Lake Tahoe Fire Protection District is hosting its annual pancake breakfast on July 3 at the Incline Station. The Veterans Club is hosting its annual Pancake Breakfast on July 4 at Aspen Gove. The Firecracker Race on July 4 is a fundraiser for the Cross-Country Team at SNU.

For more information, visit the News and Community Bulletin pages on IVCBA.org.



# AIM FOR THE FUTURE

The #1 College Prep Private School in the Reno Area Announces  
New Student Activity Center — Opening Winter 2021

Grades 3-12 | Applications Open Now for 2021-2022

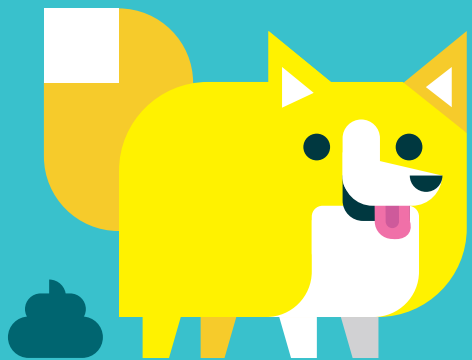
**SAGE  
RIDGE**  
S C H O O L



**LEARN MORE**  
about our programs  
and Campaign  
[sageridge.org/AIM](https://sageridge.org/AIM)



Be #1 at picking up #2.



Take care.

More pointers at [takecaretahoe.org](http://takecaretahoe.org) #takecaretahoe

### THE SCOOP ON DOG POOP

In 1972, The Porter Cologne act triggered the requirement for all sanitary sewer waste to be exported out of the Tahoe Basin (and banned the use of septic systems). This was done to reduce nutrient and pathogen loading from human fecal waste in the basin. That took care of the human impacts, but domestic animal waste, especially dog waste, remains a concern.

Tahoe is a dog’s paradise, with endless trails and cool fresh water. But dog waste has potential harmful impacts on the watershed, if not collected and disposed of properly. With additional full-time residents and visitors around the region this summer, dog numbers have increased and with them comes more poop.

Proper disposal of pet waste is important to protect Tahoe’s watershed. Dog waste poses a threat to waterways because it

carries nitrogen and phosphorus, which can create algae, and also spreads diseases that are dangerous to humans. When freshly produced, dog poop can host a number of pathogens including giardia and salmonella, fecal coliform bacteria, e. coli, and other contaminants. Picking it up and properly disposing of it directly protects our water and watershed.

IVGID’s Waste Not team maintains a water quality sampling program at select Incline Village creeks and beach areas. The good news is that water sampling at these sites doesn’t show any tremendous impacts from dog or wildlife waste, according to Madonna Dunbar, Tahoe Water Suppliers Association executive director.

“But this doesn’t mean people shouldn’t be responsible about it,” Dunbar said. “We have a lot of dogs. As a community we need to think on a community level about dogs. We are talking about tens of thousands of pounds of dog waste in the Basin.”

To promote responsible pet ownership, the Tahoe Water Suppliers Association (TWSA) has sponsored 100 dog waste bag stations, targeting trails, stream zones and neighborhood hot spots, throughout communities in the Tahoe Basin.

IVGID’s Parks Department has placed dozens of dog waste bag dispensers throughout our community properties. It’s a dog owner’s responsibility (per Washoe County ordinance) to clean up after your dog. These efforts really help keep our community properties clean. IVGID’s Parks staff makes every effort to get what is missed, but staff resources are limited.

Want to know more? Local news outlet Moonshine Ink recently published an extensive research story on this topic at: [www.moonshineink.com/tahoe-news/clash-of-the-leashes/](http://www.moonshineink.com/tahoe-news/clash-of-the-leashes/)

**Is Your Home IGNITION RESISTANT?**

Get a free defensible space inspection to know for sure.  
[nltfpd.org/defensible-space](http://nltfpd.org/defensible-space)

Curbside chipping is also free.  
[nltfpd.org/curbside-chipping](http://nltfpd.org/curbside-chipping)

Learn more at [livingwithfire.com](http://livingwithfire.com)

An EEO/AA Institution | Funding provided by BLM - Nevada



## TAKE THE TRAVELER RESPONSIBILITY PLEDGE FOR TAHOE RESIDENTS & VISITORS

To protect and preserve vulnerable ecosystems and residential communities, regional visitor bureaus have joined forces to focus on educational tactics that reinforce the importance of mindful, responsible travel.

“The Traveler Responsibility Pledge” was developed so residents and visitors can enjoy the unique culture and natural beauty of our region responsibly.

“Tourists and hotel guests and their destination decisions play a huge part in the sustainability of our region,” said Madonna Dunbar, Resource Conservationist for IVGID and Executive Director of the Tahoe Water Suppliers Association. “Tahoe

residents and guests can become environmental stewards, offering contributions towards making Tahoe a clean destination for this millennium and the next.”

As Lake Tahoe has always been a popular destination and as more people continue to visit or call the Sierra home, it is important for everyone to acknowledge the community's expectations to leave it better than they found it.

Designed to offer specific actions that visitors and residents can take to help protect Lake Tahoe, local wildlife and the environment, the new Traveler Responsibility Pledge is composed of six tenets that align with primary sustainability initiatives of the region.

### 1. Become a Steward of Lake Tahoe

Commit to exploring the Lake Tahoe region responsibly and help preserve our treasured spaces by leaving them better than you found them. Adhere to instructions and signage, rules are in place for your safety and the wellbeing of our environment. Lend a hand during one of our community clean-up days and volunteer through North Lake Tahoe's Ambassador program. Think like a local! Ride public transportation and support small businesses and events.

Continued on page 44

# CRIMINAL DEFENSE WITH DIGNITY.

DUI, Drug Offenses,  
Crimes of Violence, Sex Offenses

**THOMAS E. VILORIA**  
Managing Partner

AVVO 10 Rating.  
30+ Years Experience.

775.284.8888  
327 CALIFORNIA AVENUE  
RENO, NV 89509

[renonvlaw.com](http://renonvlaw.com)

- PAVING & PATCHING
- SEALCOATING
- CRACK SEALING
- STRIPING
- SIGNAGE
- COMMERCIAL & RESIDENTIAL

**Full Service Parking Lot & Driveway Specialists**  
**FREE Estimates!**

# LAKESIDE

## Paving & Sealing, Inc.

### 530.583.3600

LakesidePaving.com Tahoe City, CA

CA Lic. #829462  
NV Lic. #69490



**2. Respect the Environment**

Do your part to preserve Lake Tahoe's natural beauty. Make sure to leave no trace by packing out what you brought in. Dispose of trash in designated receptacles, stay on trails so you don't disturb the landscape and be mindful of your actions (and your pets!) to reduce your ecological footprint. Say no to plastic and bring your own reusable water bottle (and utensils!). Tahoe Tap is the best way to stay hydrated.

**3. Stay Educated**

Check weather conditions and operational modifications by state ahead of your visit and prepare in advance for outdoor experiences you plan to partake in to stay safe. Check out the "Know Before You Go" informational guides on GoTahoeNorth.com for travel tips, itinerary recommendations, safety protocols and more. Sign up for county and state text alerts and stay connected to travel advisories and emergency updates while you're here.

**4. Keep Wildlife Wild**

Observe wildlife from a respectful distance to ensure their safety (and yours) and never feed wildlife. Feeding wildlife can be as direct as offering a bit of your lunch, to leaving your food or garbage exposed for animals to find. It may take just one experience for an animal to learn people = food. Wild animals depend on natural behavior for survival. Once a wild animal becomes food-conditioned it loses its natural fear of people and public places. Not feeding wild animals keeps you safe and the wildlife wild.

**5. Be Fire Safe**

Get prepared, informed and involved! Consult fire restrictions before lighting a campfire or starting a grill and know the permitting rules ahead of burning anything outdoors. Fireworks are not permitted in the Lake Tahoe Basin. When cooking outdoors, plan on propane or gas, as there is a Basin-wide ban on charcoal and wood fires in effect this summer. Please maintain your vigilance and be prepared in the event

of an emergency. Sign up for county and state text alerts and stay connected to travel advisories and emergency updates while you're here.

**6. Demonstrate Mindful Travel**

Kindness goes a long way in our community. Locally-owned businesses appreciate your patience and commitment to following health and safety protocols in their establishments. If an outdoor area looks too crowded, move on and explore a new location. Speak kindly to people you encounter on public lands and remember to be a good neighbor by keeping noise down and parking in designated areas. If you aren't feeling well, please stay home. Travel with awareness and observe the impact of your actions – it takes all of us working together to create a healthy and positive Tahoe experience.

The pledge outlines actions we can all do to reduce travel related impacts. More information is available at [www.gotahoenorth.com/Sustainable-Travel-Pledge/](http://www.gotahoenorth.com/Sustainable-Travel-Pledge/)

IVGID BOARD OF TRUSTEES



**Tim Callicrate**  
Chairman  
PO Box 5663  
Incline Village, Nevada  
89450  
775.336.9925  
callicrate\_trustee@ivgid.org  
Term expires 2022



**Matthew Dent**  
Vice Chairman  
774 Mays Blvd. #10-573  
Incline Village, Nevada  
89451  
775.298.1005  
dent\_trustee@ivgid.org  
Term expires 2024



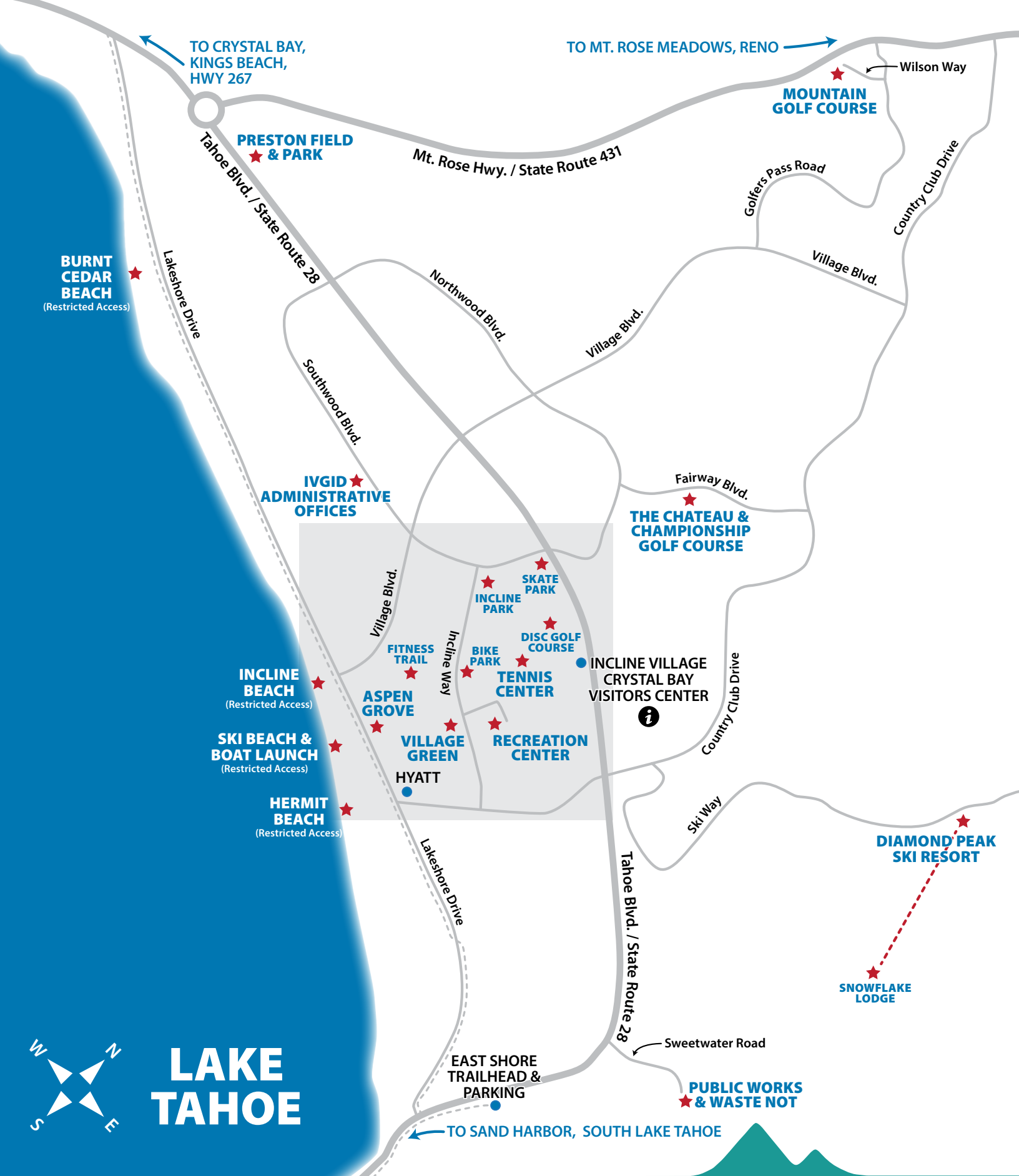
**Michaela Tonking**  
Treasurer  
546 Lantern Ct.  
Incline Village, Nevada  
89451  
775.225.0748  
tonking\_trustee@ivgid.org  
Term expires 2024



**Sara Schmitz**  
Secretary  
932 Lakeshore Blvd.  
Incline Village, Nevada  
89451  
925.858.4384  
schmitz\_trustee@ivgid.org  
Term expires 2024



**Kendra Wong**  
Trustee  
774 Mays Blvd. #10-294  
Incline Village, Nevada  
89451  
916.251.9664  
wong\_trustee@ivgid.org  
Term expires 2022



TO CRYSTAL BAY,  
KINGS BEACH,  
HWY 267

TO MT. ROSE MEADOWS, RENO

**MOUNTAIN  
GOLF COURSE**

**PRESTON FIELD  
& PARK**

Mt. Rose Hwy. / State Route 431

Golfers Pass Road

Country Club Drive

**BURNT  
CEDAR  
BEACH**  
(Restricted Access)

Lakeshore Drive

Tahoe Blvd. / State Route 28

Northwood Blvd.

Village Blvd.

Village Blvd.

Southwood Blvd.

**IVGID  
ADMINISTRATIVE  
OFFICES**

Fairway Blvd.

**THE CHATEAU &  
CHAMPIONSHIP  
GOLF COURSE**

Village Blvd.

**INCLINE  
PARK**

**SKATE  
PARK**

**FITNESS  
TRAIL**

**BIKE  
PARK**

**DISC GOLF  
COURSE**

**INCLINE  
BEACH**  
(Restricted Access)

**TENNIS  
CENTER**

**INCLINE VILLAGE  
CRYSTAL BAY  
VISITORS CENTER**

**SKI BEACH &  
BOAT LAUNCH**  
(Restricted Access)

**ASPEN  
GROVE**

**VILLAGE  
GREEN**

**RECREATION  
CENTER**

**HYATT**

Country Club Drive

**HERMIT  
BEACH**  
(Restricted Access)

Lakeshore Drive

Ski Way

**DIAMOND PEAK  
SKI RESORT**

**SNOWFLAKE  
LODGE**



**LAKE  
TAHOE**

**EAST SHORE  
TRAILHEAD &  
PARKING**

Sweetwater Road

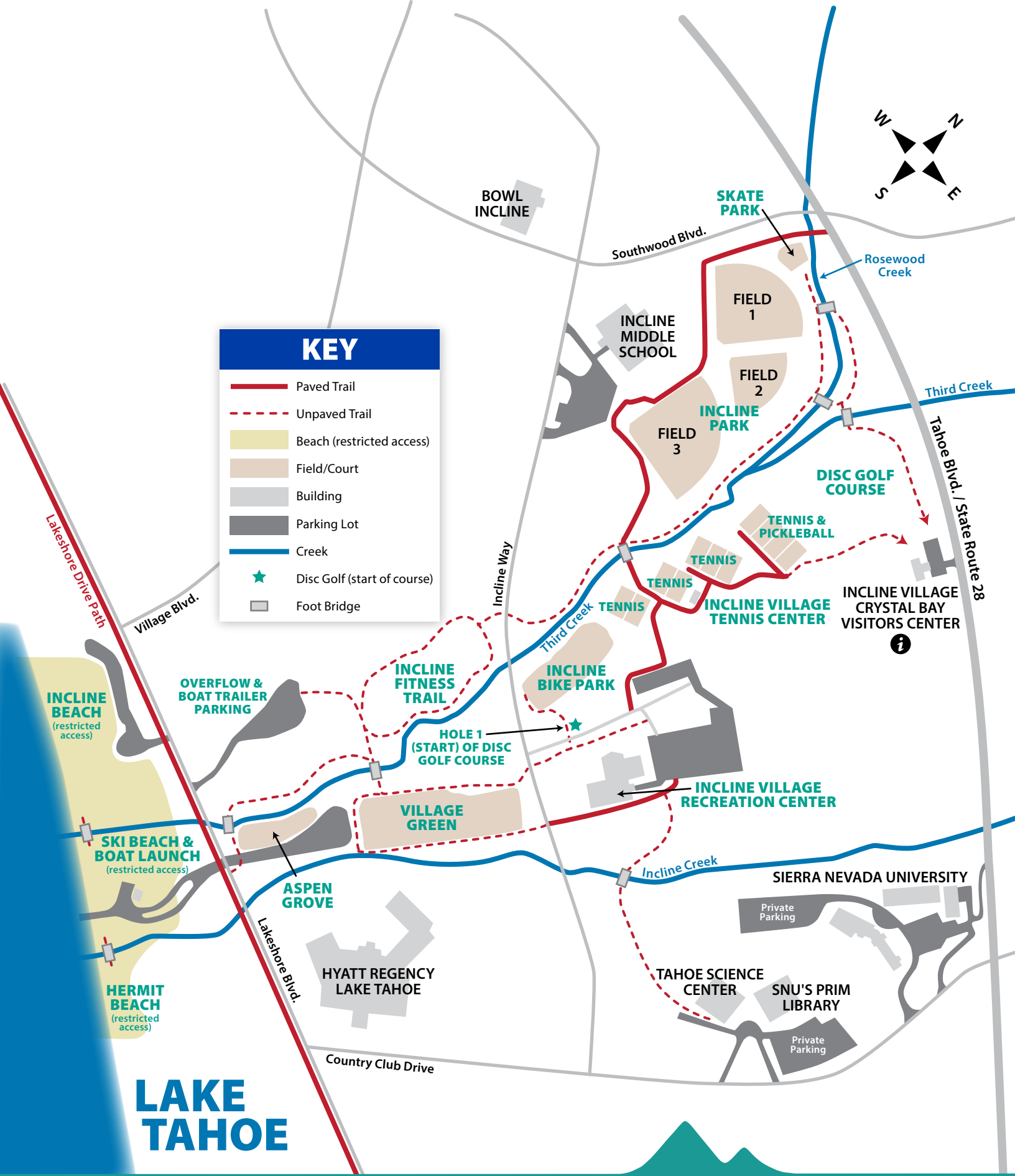
**PUBLIC WORKS  
& WASTE NOT**

TO SAND HARBOR, SOUTH LAKE TAHOE

Access to IVGID Beaches (Ski Beach, Incline Beach, Hermit Beach and Burnt Cedar) is restricted to IVGID pass holders with beach access.

**LEARN MORE ABOUT IVGID PASSES AT [INCLINERECREATION.COM](http://INCLINERECREATION.COM)**






Access to IVGID Beaches (Ski Beach, Incline Beach, Hermit Beach and Burnt Cedar) is restricted to IVGID pass holders with beach access.

LEARN MORE ABOUT IVGID PASSES AT [INCLINERECREATION.COM](http://INCLINERECREATION.COM)

# YOUR GUIDES TO TAHOE REAL ESTATE

 <p><b>KERRY DONOVAN</b> DONOVAN GROUP 775.750.2190 NV BS.0052696</p>	 <p><b>MEGAN PARR WARREN</b> DONOVAN GROUP 775.303.2672 NV BS.0143530</p>	 <p><b>TANYA SOULE</b> 775.690.2341 NV S.0170786</p>
 <p><b>GABRIELA MCKNEELY</b> 775.636.3361 NV BS.0146156</p>	 <p><b>MARY KLEINGARTNER</b> 206.604.1200 NV S.0173864</p>	 <p><b>MIKE YOUNG</b> 775.771.2391 NV BS.0029150 CA 0784148</p>
 <p><b>DONNA TONKING</b> 775.722.6726 NV S.0016096</p>	 <p><b>JANE RUBSAMEN</b> 775.843.0312 NV S.0066076</p>	 <p><b>JENNIFER BULLARD</b> 530.545.2187 NV S.0062427 CA 01440019</p>
 <p><b>STACEY HANNA</b> 775.690.7078 NV BS.0145845 CA 01991991</p>	 <p><b>KAITLYN MCCABE</b> 775.772.1191 NV S.0182107 CA 02105125</p>	 <p><b>SUZIE MCSHERRY</b> 775.413.3106 NV S.0190396</p>

TAKE YOUR CAREER TO  
THE NEXT LEVEL,  
CALL JENNY JOHNSON  
775 691 4382

**CHASE**  
INTERNATIONAL  
LUXURY LEADER





GENERAL IMPROVEMENT DISTRICT  
893 Southwood Blvd.  
Incline Village, NV 89451

# **Specialized Care Where *you* Need it.**

- **Concussion Management**
- **Elbow**
- **Foot & Ankle**
- **Hand & Wrist**
- **Hip**
- **Joint Replacement & Revision**
- **Knee - Iovera<sup>®</sup> Pain Treatment Available**
- **Orthopedic Trauma**
- **Pediatric Orthopedics**
- **Shoulder**
- **Sports Medicine**



**TAHOE FOREST  
ORTHOPEDICS &  
SPORTS MEDICINE**

**(530) 213-0225 | [www.tahoeorthopedicsandsports.com](http://www.tahoeorthopedicsandsports.com)**