

Incline Village General Improvement District Vol 6 Num 1

IVGID

Quarterly
FEBRUARY 2020



www.yourtahoepace.com



DIAMOND PEAK SKI RESORT (Dec-Apr)

1210 Ski Way • 775-832-1177

Explore miles of welcoming, perfectly groomed trails, tree skiing and 1,840 feet of vertical. Enjoy easy access from parking lot to lifts, ski schools for all ages, the best value for lift tickets and the most breathtaking views of Lake Tahoe. *DiamondPeak.com*



Ciprian Photography



INCLINE VILLAGE PARKS & RECREATION

980 Incline Way • 775-832-1300

Community members and visitors can enjoy our beautiful parks, athletic fields, trails, and a wide range of outdoor/indoor activities. Our public Recreation Center includes an indoor pool, sauna, group & water fitness classes, a cardiovascular room, gymnasium, childcare and a variety of programs and services.

Skip the line and register for programs online at register.yourtahoeplace.com.

INCLINE VILLAGE GOLF COURSES

*Championship Course • 955 Fairway Blvd
775-832-1146 (May-Oct)*

A classic 18-hole public Lake Tahoe golf course featuring a Robert Trent Jones Sr. design and lake views. This par-72 course was listed "Best in State" 2012 - 2015 by Golf Digest magazine and ranked #9 in Nevada on Golfweek's "Best Courses You Can Play 2018" list.

*Mountain Course • 690 Wilson Way
775-832-1150 (May-Oct)*

Our 18-hole, par-58 course is fun, affordable, & quick to play with special 9-hole and twilight rates. Bring the family out for fun programs and events like golf leagues, Nine & Wine and Sunday Family Fun Days.

INCLINE VILLAGE WEDDINGS & EVENTS

955 Fairway Blvd • 775-832-1240

Create an unforgettable experience for your Lake Tahoe wedding, meeting, celebration or golf event. Our facilities include The Chateau at Incline Village™, Aspen Grove, The Championship and Mountain Golf Courses, and Diamond Peak Ski Resort.

The Chateau features a 5,200 sq. ft. ballroom that can be divided for large or small meetings and events. Aspen Grove is the perfect outdoor venue for up to 150 people.

INCLINE VILLAGE TENNIS CENTER

964 Incline Way • 775-832-1235

The Incline Village Tennis Center is located in a picturesque alpine setting along a year-round creek. Our club-like facilities are open to the public with daily court fees or seasonal memberships. The Tennis Center offers ten courts, eight pickleball courts, and a pro shop with demo rackets. Lessons, socials, tournaments and camps are offered during the summer. *(Pro Shop open May-Oct)* Pickleball is now available at the Rec Center during the winter months.

IVGID PICTURE PASS HOLDERS RECEIVE DISCOUNTS AT ALL THESE VENUES
(877) GO-VIEWS • 893 Southwood Blvd, Incline Village, NV 89451
YOURTAHOEPLACE.COM



A NEW DECADE
DEMANDS

A NEW APPROACH

INTRODUCING
THE MOST ADVANCED
SELLER STRATEGY
THAT INCLINE VILLAGE
HAS EVER SEEN.

“

ONCE YOU **SEE** WHAT
CORMAN GROUP NOW OFFERS,
YOU WILL NEVER SETTLE
FOR ANYTHING LESS!”



CORMAN GROUP



LUXURY COLLECTION

JEFFREY CORMAN &
KIRSTIN BURBANK CORMAN

INCLINE VILLAGE CONCIERGE REALTOR®

775.339.1144

JEFF@EXPINCLINE.COM

901 TAHOE BLVD., INCLINE VILLAGE

BOARD OF TRUSTEES

Chairman

Tim Callicrate

callicrate_trustee@ivgid.org

Vice Chairman

Matthew Dent

dent_trustee@ivgid.org

Secretary

Kendra Wong

wong_trustee@ivgid.org

Treasurer

Sara Schmitz

schmitz_trustee@ivgid.org

Trustee

Peter Morris

morris_trustee@ivgid.org

EDITORIAL STAFF

Managing Editor

Paul Raymore

Contributors

John Crockett

Madonna Dunbar

Joseph Hill

Samantha Kurashewich

Shelia Leijon

Joe Pomroy

Jaclyn Ream

Kerrie Tonking

Ashley Wood

Copy Editor

Kari Ferguson

CONTACT US

893 Southwood Blvd.

Incline Village, NV 89451

775.832.1100

info@ivgid.org

PUBLISHING

Each Incline Village/Crystal

Bay parcel owner receives one

subscription to a domestic

address.

ADVERTISING SALES

CCMedia

Reno | Las Vegas

P | 775.327.4200

peggy@cc.media

www.cc.media

COVER PHOTO

Philip England Photography

WHAT'S INSIDE

- 06 Public Works - From Our Management
- 08 Microplastics Focus
- 12 Capital Projects Update
- 14 Waste Not Team
- 15 Sustainability Programs
- 20 Diamond Peak Ski Resort
- 26 Recreation Winter Programs & News
- 31 Incline Village Golf Courses
- 33 Weddings & Events - Staff Spotlight
- 33 Safety Information from Southwest Gas
- 34 Incline Village Library Programs & Events
- 36 Incline Village/Crystal Bay Map
- 37 Heart of Incline Recreation Map
- 38 Incline Village/Crystal Bay Winter Calendar of Events
- 38 Board of Trustees

IVGID FACILITIES & COMMUNITY INFO

Aspen Grove Community Center	960 Lakeshore Blvd.	775.832.1240
Burnt Cedar Beach	665 Lakeshore Blvd.	775.832.1232
Championship Golf Course	955 Fairway Blvd.	775.832.1146
Diamond Peak Ski Resort	1210 Ski Way	775.832.1177
Incline Beach	967 Lakeshore Blvd.	775.832.1233
Incline Elementary School	915 Northwood Blvd.	775.832.4250
Incline High School	499 Village Blvd.	775.832.4260
Incline Middle School	931 Southwood Blvd.	775.832.4220
Incline Park	939 Southwood Blvd.	775.832.1310
Incline Skate Park	Tahoe Blvd. & Southwood	775.832.1310
IVGID Administration	893 Southwood Blvd.	775.832.1100
Lake Tahoe School	995 Tahoe Blvd.	775.831.5828
Mountain Golf Course	690 Wilson Way	775.832.1150
Preston Field	700 Tahoe Blvd.	775.832.1310
Public Works	1220 Sweetwater Rd	775.832.1203
Recreation Center	980 Incline Way	775.832.1310
Sierra Nevada College	999 Tahoe Blvd.	775.831.1314
Ski Beach	967 Lakeshore Blvd.	775.832.1156
Tennis Center	964 Incline Way	775.832.1235
The Chateau at Incline Village™	955 Fairway Blvd.	775.832.1240
The Grille at the Chateau	955 Fairway Blvd.	775.832.1178
Village Green	960 Lakeshore Blvd.	775.832.1310



Elevate
your life.



Koch Elevator has several **residential products**, making it easy to purchase the best products that will meet your needs:

HOME ELEVATORS

DUMBWAITERS

STAIR CHAIRS

WHEELCHAIR LIFTS (INSIDE OR OUTSIDE)

**Local Family-Owned
Since 2001**

Cell: 775.247.8820

*Authorized dealers for
Inclinor of America, Savaria,
Thyssenkrupp Access, Waupaca,
Matot, Canton and Harmar.*

Off: 775.323-8822
nick@kochelevator.com

**KOCH
ELEVATOR**

924 Incline Way, Suite C, Incline Village, NV
561 Sunshine Lane, Reno, NV

CA LIC 927006 NV LIC 054884



LOTS OF EXCITING PROJECTS AHEAD

Joseph J. Pomroy, IVGID Director of Public Works

Public Works has another busy year ahead. In this issue we will share some of the important things we will be working on in the coming year.

The Water Efficiency Rebate for residential homeowners, which started on July 1, 2019, has been well utilized by customers to make updates to old model toilets and washing machines. Make sure to take advantage of this program before we hit the limit of 100 rebates issued to customers.

Waste Not will be working on many exciting projects this summer. They

have started a project with the Nevada Division of Environmental Protection (NDEP) on grant funded work for analyzing microplastics in Lake Tahoe, are rolling out a water fill station rebate and tap water app so people can find refill stations for water, and continue work on District sustainability tracking and reporting.

Our Engineering department has many facility improvements and projects that they will be overseeing this year. We are excited that the Incline Park Ball Field improvements are completed and

ready for the upcoming sport seasons. The Mountain Golf Course Clubhouse repairs and updates are underway and making good progress for customers to use this summer. There are also some much-needed sewer and water infrastructure projects that will be completed at the Water Resource Recovery Facility (WRRF) and water pump stations and tanks.

The annual rate study will be presented to the Board of Trustees in February 2020. This annual study gives us a detailed look into our rates to make sure they are fair and equitable for all of our customers.

Throughout the summer we will continue to have our Walk and Learn events. These detailed tours give the community a chance to explore our water and sewer facilities to gain a better understanding of all the things we oversee in order to protect District customers. I look forward to seeing you at one (or all) of these tours.

I hope you find the information in this issue helpful.



Mountain Bounty Farm

Growing food for our community with love and care since 1997

Weekly CSA Boxes

Local, organic produce, delivered weekly, year-round

MountainBountyFarm.com

(530) 292-3776

Join anytime!





1680 PINECONE CIRCLE
INCLINE VILLAGE, NV

\$6,950,000 | 5 BD | 6 BA | 4,934 SF

Elegant lake view home with exquisite attention to detail in a lakefront community of homes with a coveted, sandy shared beach offering a pier and one assigned boat buoy. Easy access to exterior deck, patios and lush gardens.



955 FORTH GREEN DRIVE
INCLINE VILLAGE, NV

\$2,875,000 | 4 BD | 6 BA | 5,711 SF

Undiscovered Elegance on the Championship Golf Course. The finest low elevation home setting in Incline Village surrounded on three sides by the golf course while subtly filtered to keep its privacy.



554 LANTERN COURT
INCLINE VILLAGE, NV

\$1,600,000 | 4 BD | 3 BA | 3,555 SF

Fantastic setting at the end of a cul-de-sac with views of Lake Tahoe and lots of privacy. Great room living area with stone fireplace and wet bar, opening to the dining area and remodeled kitchen. Tall, wood beamed ceilings and the open floor plan concept add to the great flow and feel of this home.



517 SILVERTIP DRIVE
INCLINE VILLAGE, NV

\$1,585,000 | 3 BD | 4 BA | 2,412 SF

Completely remodeled home with meticulous attention to detail and custom design elements throughout. This low elevation, little gem of a mountain home is low maintenance and ready for you to move right in. Enjoy filtered lake views from many rooms and a spacious upper deck with built-in Vermont Castings BBQ and no maintenance metal decking.

Combining a passionate enthusiasm for the Tahoe lifestyle and a unique understanding of the robust and dynamic Tahoe real estate climate, Team Soli has established themselves as market leaders in representing buyers and sellers in the Lake Tahoe real estate market. If you are interested in more information, or curious to know what the value of your home is, please contact us.



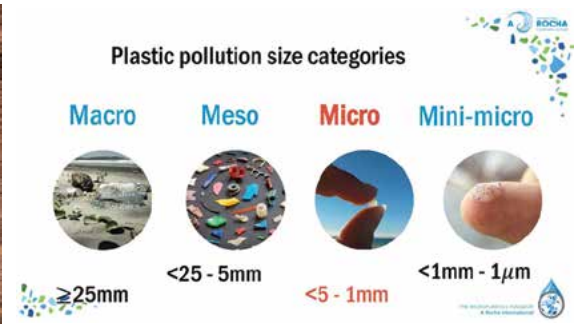
TEAM SOLI

Engel & Volkers Incline Village
+1 775-298-5066
inquiry@solirealestate.com
www.solirealestate.com

CRS, CLHMS, CDPE
NV RED # BS.145530 / S.63581 / S.185416
CA DRE # 1497824 / 1768524

ENGEL & VÖLKERS®
TEAM SOLI

Engel & Völkers Incline Village • 214 Village Boulevard • Incline Village, NV 89451



GROWING CONCERN OVER MICROPLASTICS IN THE TAHOE ENVIRONMENT

Microplastics are a subcategory of plastic pollution that has a widespread effect on the environment. The small size of these contaminants makes them prevalent in all segments of the watershed.

Defined as small pieces of plastic, less than 5 mm (0.2 inch) in length, microplastics can be found throughout the environment. Microplastics come in many forms including fibers, pellets, films, fragments, foam and microbeads. Microplastics do not biodegrade, they break into smaller and smaller pieces, which cause them instead to accumulate and persist in the environment.

Microplastic pollution enters the environment through many pathways including residential and industrial use. The most common source of residential microplastic pollution is clothes washing of synthetic fabrics including nylon, fleece, and polyester. Additional residential microplastic inputs into the environment are tire abrasion while driving, single use plastic bags and bottles, dumping of paint, cigarette butts and personal care products. In 2015, the Microbead-free Waters Act was passed which prohibits the manufacturing and distribution of rinse-off plastic microbead products.

Microplastics pollution can be found in terrestrial and aquatic environments. Microplastics enter through multiple conduits, including municipal wastewater and nonpoint source pollution pathways such as stormwater runoff, wind action, and litter.

With the prevalent spread of microplastics throughout our environment, should you be concerned?

The World Health Organization (WHO) recently published the *Microplastics in Drinking Water (2019) Report*, an in-depth literature review on the known effects of microplastics. "Overall, there does not seem to be any reliable information

at this time that would suggest any overt health concerns associated with microplastic particles."

There are currently no epidemiological or human studies on ingested microplastics. The effects of microplastic on the human system is unknown at this time, but humans have been ingesting microplastics for decades and no correlation to adverse health effects have been made.

Here is what we do know about the relationship with microplastic and the environment, including the influence on freshwater systems, similar to our source water, Lake Tahoe.

At this time, there are no standardized methods for analyzing microplastics in the environment. Currently there are several movements to standardize methodologies for analysis and sample collection, including California legislation to finalize a microplastic definition, and adopt a standard methodology to be used in a subsequent four-year study on the amount of microplastics in drinking water.

Once there are quality assured methods to determine the number, shape, size and composition of microplastic particles, additional studies can be done on the toxicological effects.

Microplastic pollution is abundant in the environment; the chemical composition of plastic includes carbon-to-carbon bonds that are extremely difficult to break, and nearly impossible for bacteria to biodegrade in nature. As mentioned before, all plastics can and will become microplastics during the process of degradation. You can assume that anywhere a plastic is, microplastics will soon be found there too.

A plastic cup left on the beach, ski resort, or park will breakdown into microplastic, and enter the ecosystem,

Continued on page 10

PINK



HEAVENLY



TEAM UP WITH BARTON TO GIVE CANCER THE BOOT

100% OF PROCEEDS GO TO PROVIDING COMPLIMENTARY CANCER SUPPORT SERVICES FOR THOSE IN OUR COMMUNITY LIVING WITH CANCER



**MARCH
21, 2020**
HEAVENLY MOUNTAIN RESORT'S
CALIFORNIA BASE LODGE

REGISTER NOW PinkHeavenly.com

THANK YOU TO OUR SPONSORS



Sierra Windows and Doors

it can then be introduced into the air via wind, or into a watershed via rain or snowmelt.

- Microplastics are found in freshwater ecosystems including creeks, rivers, ponds, and lakes.
- Microplastic can be found in all the earth's oceans and seas.
- Microplastics have been found in the polar ice caps.
- Microplastics have been found in remote mountain environments where known sources of plastic are at least 60 miles away. These microplastics have undergone atmospheric transport.

Microplastics are also found in terrestrial ecosystems, including our homes. Synthetic materials, such as fleece, shed microplastic fibers that can be found in indoor dust particles. Synthetic fibers also release microplastics when they go through the clothes washers. The grey water from washing machines is processed at the local treatment facility. These microplastics get separated out with the biosolids, which are later applied onto farmland as fertilizer. At other facilities, even smaller particles remain in the wastewater effluent and are discharged with the effluent water into rivers, lakes and oceans.

Studies are currently underway here at Lake Tahoe to understand the amount of microplastic pollution that is present on our beaches, and future studies will look lakeward.

Tahoe's emerging microplastics research and education projects

The Desert Research Institute in Reno is conducting analyses of water samples from regional storm drains, and soil samples from the shoreline, looking for the presence of microplastics. Initial sampling has revealed the presence of particles of synthetic fiber and bits of plastic in Lake Tahoe. The team has since been examining the particles to identify its origin and is scheduled to present its findings in 2020.

At the same time, The UC Davis Tahoe Environmental Research Center (TERC) is also conducting research under a separate Nevada Division of Environmental Protection (NDEP) grant. This *Snapshot Study on the Fate and Type of Plastics in Lake Tahoe* will include sampling and analysis for micro-plastics from both the mid-lake waters of Lake Tahoe, and intake water from Nevada Tahoe water suppliers.

The Tahoe Water Suppliers Association has also teamed up with the UC Davis Tahoe Environmental Research Center to develop a "Reducing Single Use Plastics" education

campaign in 2020-2021, focused on the simple "re-use and refill" action. Micro plastics are non-point source (NPS) contaminants, meaning they enter the watershed from multiple, non-distinct, non-repeating locations.

Common non-point sources are litter, road debris and tire erosion. This education and outreach project aims to raise the level of public awareness about NPS pollution and its effects on water quality by specifically addressing the emerging issue of microplastic pollution and sourcewater protection at Lake Tahoe. The project includes education and public outreach to drive a behavior change in the region with the goal of raising awareness of plastic pollution, increasing the public understanding of the different types of plastics, and the impacts of consumer choices. By reducing the use of single-use plastics, behavior change may reduce the presence of plastics in Tahoe's waters and beaches.



HOLM
Interior & Exterior Work
We make your home better.

775.298.2727 | HolmConstructionTahoe.com NV #81893 CA #941072



AMERICA'S ART NEVADA'S CHOICE

Community Selections from the Smithsonian American Art Museum

ON VIEW THROUGH APRIL 19, 2020

N NEVADA | **MUS** | **OF**
ADA | EUM | ART

Donald W. Reynolds Center for the Visual Arts | E. L. Wiegand Gallery
160 West Liberty Street in downtown Reno | nevadaart.org

Art Bridges + **TERRA** + **SAAM** Smithsonian American Art Museum
FOUNDATION FOR AMERICAN ART

This is one in a series of American art exhibitions created through a multi-year, multi-institutional partnership formed by the Smithsonian American Art Museum as part of the Art Bridges + Terra Foundation Initiative.

W. E. L. Wiegand Foundation

America's Art, Nevada's Choice at the Nevada Museum of Art is exclusively sponsored by the Art Bridges + Terra Foundation Initiative and the E. L. Wiegand Foundation.

Childe Hassam, *The South Ledges, Appledore*, 1913, oil on canvas, Smithsonian American Art Museum, Gift of John Gellatly, 1929.6.62; Edward Hopper, *Ryder's House*, 1933, oil on canvas, Smithsonian American Art Museum, Bequest of Henry Ward Ranger through the National Academy of Design, 1981.76 © 2019 Artists Rights Society (ARS), New York; Georgia O'Keeffe, *Hibiscus with Plumeria*, 1939, oil on canvas, Smithsonian American Art Museum, Gift of Sam Rose and Julie Walters, 2004.30.6 © 2019 Georgia O'Keeffe Museum / Artists Rights Society (ARS), New York.



Incline Park Ballfield Renovations



Incline Creek Restoration Project

CAPITAL IMPROVEMENT PROJECTS AROUND THE DISTRICT

Incline Park Ballfield Renovation

This project has been completed except for a few minor remaining pieces. Some highlights of the project include: new baseball turf, improved drainage and irrigation, new scoreboard, new batting cages with retaining/seating wall, new foul poles, expansion of outfield dimensions, fencing replacement, renovated outfield warning track, new backstop, new enclosed dugouts with equipment storage and site signage improvements.

2019 Incline Creek Restoration Project

IVGID and the Nevada Division of State Lands identified an opportunity to continue the successful work to restore the valuable aquatic habitat in Incline Village and address a piece of failing District infrastructure. Between the fourteenth and fifteenth holes on the Championship Golf Course, the District maintains a crossing to facilitate customers as well as maintenance staff and equipment movement across Incline Creek. This project corrected two failing culverts, limited bank erosion and improved fish passage. This

project was completed in the fall of 2019.

Tennis Center Renovation


This project is in the design phase. The key project objectives are to renovate aging restrooms, expand the pro-shop by enclosing outdoor kitchenette area, expand and enhance the deck area, and to improve wayfinding and flow of traffic through the Tennis Center. Engineering will complete design, submit for permits, and bring the final design back to the Board prior to advertising for bids.

WRRF Aeration System Improvements


The aeration process of wastewater treatment supplies oxygen to facilitate the biological activity that converts raw sewage into treated wastewater effluent. This project funds the design and replacement of the aeration system equipment at the Water Resources Reclamation Facility. The Board awarded the contract on December 11, 2019 and construction will commence soon.

Water Reservoir Safety and Security Improvements


This project is underway replacing the ladders that access the top of the water reservoirs, installing intermediate access platforms, protective railings and new fall protection devices. The reservoir ladders, fall protection,



MENATH INSURANCE
AN ALERA GROUP COMPANY
Serving Lake Tahoe Since 1981



Are you properly insured for Tahoe living?



800-756-6507 | 775-831-3132
LOCAL EXPERTS | NATIONAL REACH
Personal, Business and Health

MENATH.COM



Mountain Golf Course Clubhouse Renovation

requirements for Arc Flash safety, are at the end of their service life and are no longer supported by the manufacturers. The Board awarded the contract in August 2019 and project completion is scheduled for April 2020.

Mountain Golf Course Clubhouse Renovation

In August 2018, a fire occurred in the Mountain Course Clubhouse which led to the closing of the kitchen area. The Board approved renovation plans which include a revised allocation of floor space, changes to access, substantial improvements to customer flow, ADA accessibility to the lower level for food service, construction of a new and expanded deck and installation of new windows and doors. The Board awarded the construction contract in August 2019. The project is currently in construction with grading, utilities, decking and paving complete. Winter work will include the interior renovation.

platforms, and protective railings will meet the current Occupational Safety and Health Administration (OSHA) safety standards. The Board awarded the contract in April 2019 and the project will be complete in June 2020.

Water Pump Station 2-1

This pump station distributes the disinfected potable water into the water distribution system to serve Incline Village and Crystal Bay. The current motor controls and switchgear does not meet modern OSHA

HIGHEST *Quality* CANCER CARE

Leading the way in rural cancer treatment through highly-skilled, compassionate care

The very latest technology, the most current treatment options, and extensive support programs, offering a whole-person approach.



Offering Varian TrueBeam



GENE UPSHAW MEMORIAL
TAHOE FOREST CANCER CENTER

10121 Pine Avenue
Truckee, CA
(530) 582-6450
tahoecancercenter.com





Madonna Dunbar, Resource Conservationist and Executive Director of the TWSA; Sarah Vidra, Public Works Program Coordinator II; and Joseph Hill, Public Works Technician.

STAFF SPOTLIGHT

Meet your Waste Not Team

Waste Not is the Incline Village General Improvement District's Conservation Program. Established in 2002, Waste Not provides a variety of services in the community, from environmental education to technical support on conservation projects.

Our mission is to empower sustainable living by providing information and services in the areas of: watershed protection, water conservation, recycling, household hazardous waste, living with wildlife and the Tahoe environment. Waste Not is part of IVGID's Public Works Department, it also serves as the home agency for the Tahoe Water Suppliers Association (TWSA).

Our staff includes:

- Madonna Dunbar, Resource Conservationist and Executive Director of the TWSA
- Sarah Vidra, Public Works Program Coordinator II
- Joseph Hill, Public Works Technician

Over time, our programs have evolved to meet changing needs in environmental education and services. In 2020, we are collaborative partners with multiple peer agencies, on a variety of projects, in the Lake Tahoe Basin.

Some of these projects include:

- Membership in the working group on Aquatic Invasive Species Management at Lake Tahoe.
- Developing a micro-plastics awareness campaign with the Tahoe Environmental Research Center (TERC) focused on reducing single-use plastics – encouraging residents and visitors to refill and reuse plastic water bottles.
- Working with TERC on the monitoring of drinking water for potential micro-plastics.
- Working with the Tahoe Fund on a network of water refill stations around the Basin.
- Technical support for Diamond Peak's STOKe Sustainability Certification. STOKe is the Sustainable Tourism and Outdoors Kit for Evaluation. It is the world's first sustainability certification

body with standards built specifically for ski tourism operators.

- Supporting Diamond Peak's Protect Our Winters (POW) Membership.
- Annual Self-evaluation of the Public Works (PW) Water and Wastewater Services on energy use, services provided, compared to industry standards, with publication of annual PW Sustainability Reports.
- Watershed Monitoring and Watershed Protection programs such as our collaboration with the League to Save Lake Tahoe to distributing metal cigarette bins in the Basin.
- Events, Events, Events: Snapshot Day, Earth Day, and other regional events.
- Coordination of community clean-up events and Incline's Tahoe Blue Crew.
- Incline/Crystal Bay liaison for GreenUP Nevada's new Green Business Program.
- Providing BEAR SMART education and solid waste compliance in the community.

There is a lot of work to be done, so we are grateful for the involvement of passionate and motivated volunteers for cleanup events, water quality sampling and neighbor-to-neighbor outreach. The Waste Not team encourages you to join us as we continue to provide conservation services for our community.

Visit the Waste Not section on ivgidpublicworks.com, email wastenot@ivgid.org or call us at 775.832.1284 for more information about our programs and events.





Water fill station at Diamond Peak



Tour Wastewater Treatment Plant

WHAT IS SUSTAINABILITY?

Sustainability relates to how IVGID operates to meet our customers' service requirements indefinitely (sustainably) while ensuring the availability of high-quality natural systems that our community relies on (fresh water, clean air, seasonal climate, etc.). The purpose of operating in a more sustainable manner is not to add more work, cost, or complexity to the organization, but rather to encourage the understanding that our agency is a significant part of the local economy and society, which is a part of an even bigger system – the environment. For our organization to thrive, all of these systems must be healthy.

There are many variables that affect sustainability from reduction of single-use plastic to the cars that people choose to drive. However, sustainability is less about finding perfect solutions and more about recognizing that organizational decisions concern more than the economic bottom line. We need to consider the environmental and societal impacts of our operations as well.

Living Sustainably In Our Community

Making sustainability work for the community of Incline Village and Crystal Bay is not a simple task. Our community faces many challenges related to drought, fires, snowpack, temperature increases, growing population and invasive species to name a few.

Some challenges are easy to act on, such as cleaning up litter and preventing garbage from entering the lake. Beyond these necessary tasks, significant projects must be implemented in order to reduce our dependence on natural resources and the associated greenhouse gases that are emitted into our atmosphere.

Technology must adapt and become more accessible for some sustainability ideas to become practical, but progress is made by those who have the resources to accomplish it despite the barriers.

Continued on page 16



ASPEN LEAF
INTERIORS
BY MARCIO DECKER

www.AspenLeafInteriors.com | 530.338.1088 | design@alifirm.com | CID#6680

IVGID's Sustainability Program

The purpose of the IVGID Sustainability Program is to responsibly manage resources under IVGID's care, protect public health, and balance our social and environmental duties to the citizens and community, all while providing cost-effective services to ratepayers. Sustainability holds importance to Incline Village Public Works in terms of environmental, social and economic security. This importance is highlighted by Lake Tahoe, the place where we live, work, invest, and play.

Public Works has been evaluating its sustainability footprint for the past several years. The Department follows sustainability indicators recommended by the Tahoe Regional Planning Agency (TRPA), the American Water Works Association (AWWA) and the Water Education Foundation (WEF) to benchmark and evaluate performance.

According to the Water Environment Federation (WEF), implementing sustainability initiatives helps:

- Unify the management system within the organization
- Reinforce organizational commitments and demonstrate progress
- Focus on energy, water and materials management
- Improve internal governance
- Document direct cost savings that result from more efficient operations
- Integrate long-term social, environmental and economic objectives within the organization
- Set an example for other organizations or public agencies - thereby gaining recognition
- Enhance the organization's profile and reputation
- Promote transparency and accountability
- Encourage stakeholder involvement
- Improve investment options and value

Action Items

The IVGID Board of Trustees approved Resolution Number 1836 in 2015 to direct District staff to consider sustainability and the environment in District operations, policies and planning. Long Range Principle Number One within IVGID's Strategic Plan includes protecting the environment as a strategic goal when considering overarching plans within the District.

The IVGID Sustainability Program would like to achieve the following goals within the next five years:

- Increase staff, resident and visitor participation and awareness in sustainable activities, energy efficiency, waste reduction and recycling activities.
- Serve as a model for the region to influence waste prevention, recycling, and procurement efforts among other public agencies, businesses, contractors, residents and visitors.
- Participate as the facilitator for a green business program in Incline Village and Crystal Bay.
- Document all sustainability data from 2010 to 2019 to use as a baseline while developing a long-term sustainability strategy and waste reduction policy.
- Request an Energy Efficiency Audit from NV Energy for applicable venues and implement recommendations.

Moving Forward

Our community is on a sustainable track thanks to our proximity to pristine natural resources and community design. It is up to us as citizens who live, work, invest and play in this community to find ways to reduce our negative impacts and emissions further.

Solutions are still being developed, but if we don't invest in sustainable technology and infrastructure, it will never become accessible to every member of our community. We have the resources to act now, so we shouldn't just sit on the mountainside and wait to see what happens.

The Incline Village General Improvement District recognizes that the community of Incline Village and Crystal Bay is a system of built, natural, and human networks. IVGID also realizes that we must plan from a regional perspective while implementing local projects and initiatives. Sustainability is an essential behavior in managing a community-wide system.

Our environmental resources are pristine; yet growing populations, drought and climate change all challenge the resiliency of our community. This challenge demands that organizations and communities within the Lake Tahoe Basin make plans with sustainability as a key strategic element.

To read the most recent sustainability report, please visit: www.yourtahoeplace.com/public-works/waste-not/sustainability

IVGID Sustainability Tips Anyone Can Do

- One day this week, try your best to avoid any single-use plastic items as you go about your daily routine. At the end of the day, pick at least one single-use item to replace with your own reusable method. Reusable coffee mugs, water bottles, straws, utensils, grocery bags, and food storage options can easily be found in most local stores or online.
- When purchasing products that you use frequently, avoid purchasing items that come in plastic. Aluminum, steel, tin, paper, and cardboard are much easier to recycle in today's economic markets and do not leave behind micro-plastic particles that could damage the environment and cause harm to aquatic and terrestrial life.
- Conserving natural resources at home is easy to do in Incline Village and Crystal Bay. Simply limit water consumption, eliminate plumbing leaks, reduce reliance on natural gas systems and choose to go up to 100% renewable on your electricity bills (<https://www.nvenergy.com/account-services/energy-pricing-plans/green-energy>).
- It is possible to walk cautiously, ride your bike safely and combine errand runs to reduce fuel consumption. The Diamond Peak Shuttles are always free to catch a ride to the mountain and all Tahoe-Truckee Area Regional Transit (TART) bus operations are now free to everyone!
- Invest in a bear shed for your trash storage needs. Bear sheds offer the lowest monthly service rate from Waste Management and no additional action is required once you lock your garbage away in the shed. WM operators simply walk up to the bear shed and empty it on your trash day, so you do not even need to be there. Wildlife conflicts can be avoided as well as nasty trash spills and associated fines. Location and access restrictions apply; please visit www.bearmartinclinevillage.org for more information.
- Drink Tahoe Tap® and skip the straw. Your local tap water is high quality, so there is no need to purchase bottled water when you are here. Annual Consumer Confidence Reports can be found online www.yourtahoeplace.com/public-works/water/water-quality and at the Public Works front office. At-home filters can be purchased to remove additional minerals if there is a concern. If tap water is not an option, try to find an alternative to plastic bottles or purchase the largest container available. Always ask for no straw when ordering any beverage at a restaurant or bar. Water coolers are a great tool to use when carrying water with you on a road trip!
- Be number one at picking up number two! Dog waste can leach bacteria and other chemicals into the soil and

waterways, especially when it is wet. Dog waste baggies are available free at the Public Works front office but are also available for purchase at local stores and online. Public Works offers free dog waste bag stations for dedicated volunteers who have time and resources to pick up, install, and maintain a supply of bags in the unit for the neighborhood to utilize. Contact wastenot@ivgid.org or call 775.832.1284 for additional information. Never leave bagged dog waste behind! The bag adds litter to the environment, and even well-trained humans can forget to grab it on the way off the trail.

- The Energy Star Portfolio Manager is an online tool provided by the Environmental Protection Agency available to any individual households and commercial/industrial properties that wish to document resource consumption. The website offers many helpful links, hints, calculators, and tips to encourage anyone to get a firm grasp on the impact of the resources that they consume. Simply create an account at www.energystar.gov, upload your utility consumption data from your bills and learn more about your greenhouse gas impact and consumption intensity per square foot among other informative statistics.



Left to Right: Melissa Goodman, CSR; Tracie Chambers, CSR; Heather Shook, CSR; Larry Peyton, Agent; Michael Peyton, Agent; Stephanie Howat, CSR; Sarah Shulman, CSR / Office Manager; Tracy Peters, Administrative Assistant

PEYTON INSURANCE AGENCY LLC

775.831.6233 | mpeyton@farmersagent.com
770 Northwood Boulevard #10
Incline Village, NV 89451
<https://agents.farmers.com/nv/incline-village/michael-peyton>

Auto | Home | Commercial | Workers' Comp
Life & Health | Bonds | & Much More!

NV LIC #935773 | CA LIC #0D72961





DRINK TAHOE TAP®

Make Your Business A Tahoe Tap Water Bottle Filling Station—Grants Available!

Plastic litter is emerging as an issue in the Tahoe region and a simple solution is reducing plastic-bottled water use. In 2020, the Tahoe Water Suppliers Association (TWSA) and Tahoe Fund are encouraging residents and visitors to reduce their use of single-use plastics, such as plastic-bottled water with a business grant program for water filling stations.

We are currently organizing the Drink Tahoe Tap® water refill network as a regional water refilling service for locals and visitors. Using the power of the national Tap app resource, this network will provide an opportunity to promote your business simply by making tap water accessible to people who carry a reusable bottle. This idea has been successful with cafes, restaurants and other businesses in many major U.S. cities including San Francisco, New York City, Boston, Portland and other locations.

By joining the Drink Tahoe Tap® water refill network - your business will be able to draw in potential customers simply

by offering a free water fill-up. All you need is a faucet or a soda machine that dispenses water. There is no cost for participation. Forty \$500 grants are being offered on a first-come basis to Tahoe area businesses interested in promoting water refilling. Interested companies such as non-profits, schools, resorts, restaurants, lodging facilities, recreation facilities should pre-apply by submitting a grant application, before installing an approved water fill station. Grant applications can be found at <https://www.yourtahoeplace.com/news/twsa-water-bottle-refill-station-grant-program>.

“With 99.994% purity, Tahoe tap water is some of the best tasting water in the country and we want everyone to know that,” said Madonna Dunbar, Incline Village General Improvement District Resource Conservationist and Executive Director of Tahoe Water Suppliers Association. “Tahoe tap is award winning water, having received multiple state and national awards over the past few years. Refilling is a simple yet effective way to reduce the use of single-use plastic-bottles. Everyone can do it. We need to move towards refilling, it’s an easy way to slow the impacts of plastics in the watershed.”

Refill stations will be listed on the Tap app, a national database of water filling stations, downloadable at www.findtap.com. For more information on participating, contact drinktahoetap@ivgid.org or call 775.832.1284.

The Best Reasons To Drink Tahoe Tap®

The Tahoe Water Suppliers’ Association takes pride in bringing you some of the finest drinking water in the world. Drink local, Drink Tahoe Tap®!

Here’s why...

The Quality: Fed solely by rain and snowmelt, Tahoe’s water is considered a pristine source, so much so, that many area water providers are required to disinfect, but not filter the water. Your local tap waters are strictly regulated by the United States Environmental Protection Agency to protect public health. The EPA requires extensive and frequent testing, with lab results sent to state and federal water quality regulators every month.

Compare that to bottled water, which is regulated by the United States Food and Drug Administration. The FDA testing requirements are nowhere near the stringency of tap water testing. Sometimes test reporting is not even required to a state or local official. There is only one person at the FDA who spends half their time looking at the limited bottled water test results, for the entire United States!

Did you know that 40% of the standard bottled water on the market is simply drawn from a municipal tap, re-filtered, packaged and transported hundreds of miles? Why pay for a process that is expensive and bad for the environment? You can easily buy a water filter for your home or travels. Water filters will address concerns about taste or odor, or if you have old pipes in your home. Simple water filters will remove many contaminants.

The Price: Your local tap water is a great value. A gallon of local tap water costs less than half a cent. Compare that to bottled water at \$2 to \$10 per gallon. That's 240 to over 10,000 times more per gallon for bottled water!

The Impact on Solid Waste: Americans consume bottled water at the rate of 1,500 bottles per second! That's 1.3 million bottles a day! Only 20% of these bottles ever get recycled. Our communities then have to deal with increased costs because of the flood of single-use bottles entering the waste stream. Fill a glass with Tahoe Tap and you will have none of this waste.

So it's pretty simple to LOVE YOUR LOCAL WATER. You can take action today:

- Don't buy bottled water except for emergency needs.
- Refill, Refill, Refill with a reuseable bottle or tumbler.
- Encourage guests and visitors to DRINK TAHOE TAP®
- Do everything you can to protect Lake Tahoe's watershed. This means things like: supporting the boat inspection process to keep invasive species out, finishing the required BMPs on your property, never dumping anything hazardous on the ground, taking fewer car trips, being water wise in your home and your home landscaping, ditching the garden fertilizers, picking up after you dog, and other simple measures.

Protecting the purity of Tahoe drinking water was one of the reasons behind the formation of the Tahoe Water Suppliers Association (TWSA) in 2003. The members of TWSA are the municipal water providers in the Basin who source their tap water from Lake Tahoe. TWSA takes providing safe, delicious and minimally treated tap water very seriously. Every December, the "Tahoe Water Suppliers Association Annual Report" is published, outlining collective watershed protection efforts and the ongoing high water quality we provide to your tap. Visit www.Tahoeh2O.org or call 775.832.1284 for more information.



WALK TO INCLINE

Turn-key, updated, low elevation corner unit has an oversized 2-car garage and guest studio.

\$600,000 | RoyalPines53.com

TESTIMONIAL

“We've worked with Tanya through three real estate transactions and each time it has been a seamless process...we went into escrow in the first day on the MLS and closed within 14 days. Her negotiation skills are remarkable and we couldn't recommend Tanya more. She's an outstanding agent. Thank you!

- Happy Incline Village Seller



FORESTED LAKEVIEW

Enjoy the tax-friendly side of Tahoe. 4-bedroom, 3.5 bath cul-de-sac home accommodates in-law quarters. **\$1,095,000** | 784ida.com



TANYA SOULE

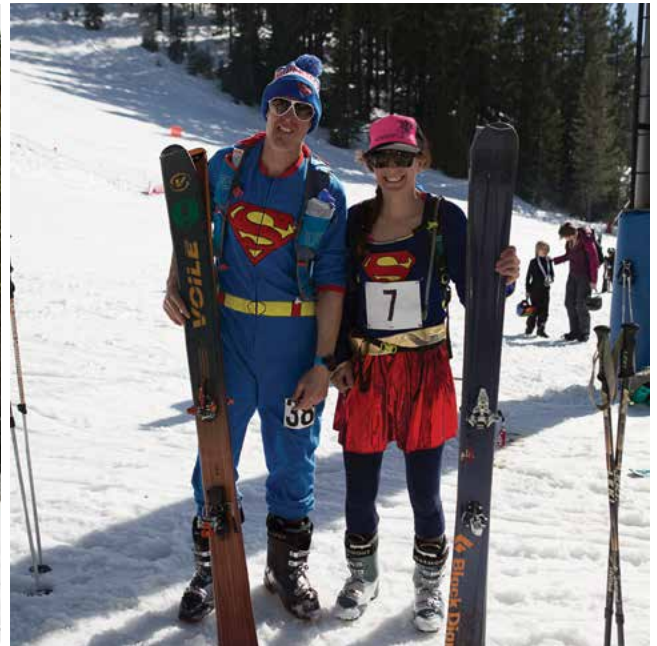
REALTOR®, CLHMS®, SRS®, ABR®, RSPS®
NV S.0170786

775 690 2341
tanya@LivingTahoe.com
LivingTahoe.com

Incline Village office: 917 Tahoe Blvd., Ste. 100

CHASE
INTERNATIONAL
LUXURY LEADER

THE LEADER IN LUXURY REAL ESTATE



3RD ANNUAL LUGGI FOEGER UPHILL/DOWNHILL FESTIVAL MARCH 28-29, 2020

The Luggi Foeger Uphill/Downhill Festival and SkiMo Race will take place on Saturday, March 28, 2020. Competitors race to the top of the mountain using whatever human-powered method you prefer - skins, snowshoes, running shoes, etc. - then ski, snowboard, snowshoe, or run back down to the finish line. For those of a less competitive nature, a recreational course will be available.

Winners are awarded for all categories - Elite (2 laps to the top), Long Course (1 lap to the top), or Recreational Short Course (1 lap to mid-mountain). The weekend will also include fun activities in the base area including ski boot races, live music, fun relays, and more! Costumes are strongly encouraged.

Mark your calendars today!

Diamond Peak will also feature uphill demo equipment trials on Saturday, March 28. Come out and see some of the latest AT and SkiMo race gear available from Tahoe Mountain Sports all day long.

Volunteers Needed

We need your help to make this event a big success. Maybe you don't want to hike a mountain but you can volunteer to take photos or help with registration and prizes. Volunteers will receive a lift ticket for Sunday and the satisfaction of helping their local, community-owned resort. Sign up online by March 26. Details at: <https://www.diamondpeak.com/events/details/luggi-foeger-uphill-downhill-festival>

**YOUR LUTRON
HOME AUTOMATION
EXPERT**



VERDI ENERGY[®]

775-391-3111

SAVANT  **LUTRON**  **GENERAC**[®]

Authorized Dealer / Installer

VERDI ENERGY, INC | CA LICENSE #1014888 NV LICENSE #0081880



TOP RANKED TAHOE SKI RESORT

*In Condé Nast Traveler's 2019
Readers' Choice Awards*

Every year, the editors of Condé Nast Traveler magazine poll their readers for their favorite places to visit, stay and play around the world. This year, Diamond Peak Ski Resort landed at #27 on their list of "The Best Ski Resorts in the U.S.

& Canada" - a great honor because it reflects the votes of real skiers and snowboarders. We are also the top-ranked Lake Tahoe resort on the list!

According to Condé Nast Traveler magazine:

"For our 32nd annual Readers' Choice Awards survey—yes, more than three decades—a record 600,000 registered voters weighed in. They were hot to share their thoughts on the best hotels in the world and best cities in the world, but also on the best skiing. From Montana to New Hampshire, Nevada to Quebec, these ski resorts were picked by our readers as the best in the world for their trails, lifts and lines, and spots for après-ski. Whether you consider yourself an expert on the moguls or someone just there for the scene, these ski resorts ticked all the boxes for you."

Read the full list on Condé Nast Traveler's website:

<https://www.cntraveler.com/galleries/2014-12-05/america-s-best-ski-resorts-readers-choice-awards-2014>

RENOAXE.COM



BUST OUT THE FLANNEL & BOOTS COME BE A LUMBERJACK FOR A DAY!

10% OFF COUPON CODE: AXEFUN

- SPECIAL EVENTS
- TEAM BUILDING
- PRIVATE PARTIES WELCOME

- GIFT CARDS AVAILABLE
- FULL-SERVICE BAR
- RESERVATIONS RECOMMENDED

100 NORTH SIERRA ST. RENO • 775.235.5658 • OPEN DAILY 10AM - 9PM



OPENING DAY



KICKOFF & PASSHOLDER PARTY



HOLIDAY FUN



UPCOMING SIGNATURE EVENTS

Through March 15: Submissions for Diamond Cut Video Competition - Diamond Peak's video edit contest is back for a second year of community-generated stoke. Last year's inaugural video edit contest highlighted the incredible local talent we have right here at Diamond Peak, and year two looks to be bigger and better. So grab your GoPro or video camera, get your crew of friends together, and go film yourself having fun at Diamond Peak. You just might win some fabulous prizes.

Video submissions will be accepted from January 1 through March 15, 2020. Prizes will be awarded to the top submissions in the following categories:

- All Mountain - Capture what makes Diamond Peak special with amazing views, steeps, stashes and more!
- Terrain Park - Show off some style and class in the new Village Terrain Park and around the hill.
- Grom (15 years old & under) - Kids and teens, this is your chance to show off your skills and get noticed.
- Mini-Grom (6 years old & under) - The youngest rippers get to show off their skills too.
- Viewers' Choice Award: Audience choice of any entry that did not win one of the other grand prizes. Voting will also be open to the public the week prior to the event.



For full details, rules and tips on creating a great edit, please see DiamondPeak.com/events/details/diamond-cut

February 7 & March 6: Moonlight Snowshoe Hikes to Snowflake Lodge - Hosted by the Incline Village Parks & Recreation Department, this award winning event encourages exercising in an intergenerational social setting for ages 9+. There will be light fare available for those who would like to purchase dinner at the top. Meet at Diamond Peak's upper parking lot at 5:30pm. The group will return around 9 p.m. Visit our website or call 775.832.1310 for information. Pre-registration is required.

March 8: Spring Demo Day by Village Ski Loft - If you're interested in trying out the latest ski and snowboard equipment before you buy, or if you just want to see what's new for 2020-21, this is your chance to do it for free. It is free to demo equipment, but you must have a valid Diamond Peak season pass or lift ticket for the day.

March 8: Retro Ski Day & Pass Holder BBQ - Break out your retro gear to help us celebrate spring skiing in style. Whether you have old wooden skis and woolen outerwear, 1970s stretch pants, or neon onesies from the 1980s, we'd love to see you on the slopes and in the lodge for the Retro Ski Day at Diamond Peak. Celebrate with live music on the deck or inside if it's chilly. We will also have a free barbecue lunch for season passholders (please present your season pass at the check-in table in the Base Lodge).

March 14: Pi Day & International Fanny Pack Day - Celebrate Pi Day with us at Diamond Peak! It's your opportunity to try to recite the infinite digits of Pi (3.14159.....) and to eat pie. We will be passing out mini fruit pies around the mountain and there may be some special prizes for those who can recite the most digits of Pi. In 2020, Pi Day also happens to fall on the same day as International Fanny Pack Day so sport those fanny packs on the slopes... it's the perfect way to carry around some extra pies!

March 22: 20th Annual Dummy Downhill - Join us for the 20th Annual Dummy Downhill where participants build a dummy on skis or snowboards that get launched off of a big jump and watch as unique characters fly down the hill or crash hard. This is Diamond Peak's signature spring event and biggest party of the year. Even non-skiers will want to come watch the madness! Dummies will be judged on creativity on the Base Lodge deck, followed by the jumping and an awards ceremony. Prizes and certificates will be awarded for creativity, best crash, furthest distance, and more.

April 3: Diamond Cut Video Competition Awards Ceremony & Screening - The top videos from each category (All Mountain, Terrain Park, and Grom/15 & Under) will be shown at the Awards Ceremony on Friday, April 3, 2020 at The Chateau at Incline Village (955 Fairway Blvd., Incline Village). All attendees will have the opportunity to vote for the Viewers' Choice award at the event.

POW RESORT ALLIANCE

In accordance with IVGID's Long Range Principle #1 (Resources and Environment) and with the assistance of the IVGID Waste Not team, Diamond Peak is excited to be joining the POW Resort Alliance. As the newest member of the POW Resort Alliance, Diamond Peak will work with Protect Our Winters to mobilize the community to be a part of the solution to the climate crisis. The POW Resort Alliance is a network of resorts from around the world leveraging their businesses to create a carbon neutral future - one full of powder days. Through the Alliance, POW will provide the tools and opportunities to take meaningful action against climate change while helping Diamond Peak engage guests. Together we will build an emotional connection with the core of the snow sports culture who truly care about climate change.



The future of the ski industry depends on a stable climate, in order to create lasting action we need to not only reduce emissions at the resort but amplify the voices of the business, the employees and the customers to help protect these places we love to work and play. POW is excited to welcome Diamond Peak to the Alliance and looks forward to leveraging this incredible opportunity to ensure the employees' and customers' voices are heard. Ski resorts can make a difference and protect their bottom lines at the same time!

February 29: POW Mixer & Panel

Learn more about POW, Tahoe's changing winters and how you can help at Diamond Peak's Loft Bar from 4:30-6pm.

Founded in 2007 by professional snowboarder Jeremy Jones, Protect Our Winters activates outdoor athletes, creatives, scientists and responsible business leaders to advance non-partisan policies that turn a passion for the outdoors into action for climate.

TAHOE FOREST HOSPICE

Gift & Thrift

893 Tahoe Blvd, Ste 1500, Incline Village, NV

On the corner of Tanager Street and Enterprise Street next to the underground parking lot.

Shop: Mon - Sat, 10am - 5pm (closed 1-1:30pm)

Donate: Mon - Sat, 10am-4pm (space permitting)

We accept clean, cared for clothing, shoes, accessories, household goods, and current books. We are unable to accept furniture or large items.

Contact: (775) 298-7901

Volunteer: Interested in volunteering?

Contact Ann Mazzini at (530) 582-3518.



**TAHOE FOREST
HEALTH SYSTEM**

tfhd.com

Store: (775) 298-7901



VILLAGE TERRAIN PARK

Following the Village Terrain Park's inaugural season last winter, the Diamond Peak park crew is back with even more innovative ideas for features to fill the Village this year. Hard work from our snowmaking team and an assist from Mother Nature allowed us to open the full Village Terrain Park on Dec. 28 with a huge selection of jumps, rails, boxes, wall rides and other unique features.

And the progression we've seen from local riders has been incredible to witness!

Brand new this winter is our Jump Start Zone in the Village Terrain Park - the ideal first terrain park experience for young kids and anyone else interested in exploring what a terrain park is all about. Build your confidence and learn the basics of terrain park riding in the Jump Start Zone, located at the bottom of Popular. Features are low to the ground with gentle landings, and there's a mellow vibe focused on fun. Hike along the edges to session the Jump Start Zone again and again to hone your park skills. After mastering these features, you can step up to The Village South on Wiggle and then work your way up to the other Village Terrain Park Zones.

Join The Village Community

There are many ways to be a part of what we are building with the Village Terrain Park...



- Follow @villageterrainpark on Instagram
- Tag us on your own Instagram posts and stories
- Share the stoke on your favorite ski/snowboard forums
- Come out and ride all the new features, over and over again
- Submit an edit in the Diamond Cut Video Competition
- Hit up one of the park crew for a Village Terrain Park sticker



ORLANDO
ENTERPRISES TAHOE, INC.
(775) 831-5567
(530) 546-5567
Building Quality Homes Since 1978
-Design Build-
-Competitive Pricing-
NV Lic # 0019856 - CA Lic # 876583
www.orlandoenterprises.com





- Feb. 10, 4:30-6pm
"Know Before You Go"
- Feb. 24, 4:30-6pm
"The Daily Flow"
- March 2, 4:30-6pm
"The Daily Flow -
Terrain and Conditions"
- March 9, 4:30-6pm
TBD

NEW FREE AVY SAVVY CLASSES

We are excited to announce the kick-off of "Avy Savvy" - a workshop series focused on increasing avalanche awareness as well as decision making in backcountry scenarios. The Parks and Recreation team, Sierra Nevada College, Diamond Peak Ski Education Foundation, and Sierra Avalanche Center are all working together to make this a program you will not want to miss.

Join us at the Diamond Peak Loft Bar and Fireside Room on select Mondays in February and March to grab a drink, meet

fellow backcountry enthusiasts, and learn something new.

Avy Savvy is going to be an exciting way to slide into our new Lake Tahoe Living Series - programs focused on giving you information, tools and skills to fully enjoy our amazing backyard.

For more information on the topics covered in the Avy Savvy workshops visit inclinerecreation.com.

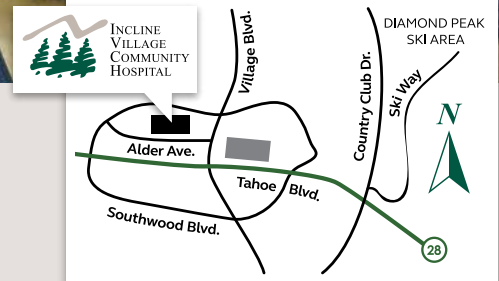


Open 7 Days a Week, 24 Hours a Day

Located in the heart of Incline Village, **Incline Village Community Hospital** offers year-round, 24/7 emergency care to the North Lake Tahoe area and a wide range of high-quality healthcare services.

- 24-Hour Emergency Care with Board Certified Physicians, Registered Nurses, and Medical Technicians
- Surgical Services
- Diagnostic Imaging and X-Ray, with state-of-the-art CT Scanner
- Incline Health Center, offering primary care, pediatrics, family medicine, orthopedics, cardiology, and ear nose and throat specialties, and 7-day a week primary care clinic with walk-in and same-day appointments
- Laboratory Services

- Physical Therapy and Medical Fitness
- Sleep Disorder Center
- Health, Wellness, and Community Education Programs
- Hospice and Home Health Services
- Charitable giving and volunteer opportunities available through the IVCH Foundation and Hospital Auxiliary



Your Community.
Your Hospital.



**INCLINE
VILLAGE
COMMUNITY
HOSPITAL**

BUILDING YOUR DREAMS

CALIFORNIA & NEVADA



Remodels/Additions » New Construction » Repairs/Maintenance
Old Tahoe to Mountain Modern » Highest Standards of Professional Construction Techniques



530.581.4000 CA » 775.831.2300 NV » tjgliddenconstruction.com » CSL#799507-NSL#54288A

ELITE WELLNESS SERVICES

The Incline Village Recreation Center offers a holistic approach to fitness, health and wellness, including a range of elite services you won't find at your ordinary gym or recreation center.

By adopting a holistic approach to wellness, Incline Village Fitness, Health & Wellness will take you on the journey to reach YOUR ultimate wellness destination. Complete wellness is more than counting calories, logging hours on the treadmill or monitoring daily steps. It involves mindful activities and actions that provide the balance needed for you to prosper in every area of your life.

Through our Elite Wellness Services we can create a plan to achieve your fitness, health & wellness goals. Our qualified coaches and trainers will introduce you to healthy, informed lifestyle choices that support overall wellbeing. Step up your fitness, health & wellness game and begin or continue to stay the course of a lifetime journey of personal wellness and prosperity.

Metabolic Testing & VO2 Max Testing

Until recently, metabolic testing, such as Resting Metabolic Rate (RMR) and Vo2 Max testing, was conducted in laboratories for elite athletes. These tests were performed to create training formulas, unique to the individual athlete's results, designed to maximize performance.

Research has found that everyone can benefit from a better understanding of how their body functions. How many calories do you burn? Does your body burn carbohydrates or fats? At what intensity levels does your body use oxygen (and burn fat) most efficiently?

Coupled with Personal Training, Nutrition Counseling and Wellness Coaching, the answers to these questions provides you with valuable information to embark on the most efficient, effective fitness, health & wellness plan of your life.

Personal Training

An investment in personal training is an investment in you. While today's fitness apps and videos can prove to be motivating, they are designed to train the masses and are, therefore, limited to a "one size fits all" approach to fitness. By engaging a personal trainer in your fitness journey, you will enjoy a workout plan tailored to your specific wellness needs. You can expect your workouts to be personal, safe, creative and focused, providing lasting maximum results.

"Trevor is wonderful. He builds a personalized routine to structure my goals each session. He inspires and gives focus to my training. I appreciate his accountability and support! I appreciate his "state of the art" approach to training." —Clint Peetz

Registered Dietitian Nutrition Counseling

Between what you hear on TV and read in the news, eating right can seem like a challenge, but it doesn't have to be. Add a comprehensive nutrition plan to your wellness journey by scheduling counseling sessions with our on-staff Registered Dietitian (RD). Develop mindful eating habits and a safe and realistic eating plan to address your specific wellness needs.

Wellness Coaching

Become more self-aware, empowered, confident, and accountable. Facilitate positive change by meeting with a Wellness Coach. A Wellness Coach helps you discover and remove the barriers that are preventing you from losing weight, getting in shape or changing your life. Wellness coaching is a process that promotes a healthy lifestyle through individual empowerment and motivation.

A Wellness Coach partners with you to identify your health and wellness goals and helps you achieve sustainable behavior changes by: uncovering your motivation, identifying your goals, and discovering mindsets, emotions and triggers that act as obstacles keeping you from reaching your potential.

Massage Therapy

While many people associate massage as a self-indulgent luxury, the truth is that massage therapy improves health, wellness and fitness, and is an essential component of a holistic wellness regimen.

The Integrated Therapeutic Massage offered by our certified massage therapists releases myofascial tissues, encourages relaxation and aids in stress reduction. Massage improves circulation and posture, facilitates better flexibility and range of motion and strengthens one's immune system.

How to book

All Elite Wellness Services are available by appointment only. Appointments can be made at the Host Desk of the Rec. Center or by calling 775.832.1310. Elite Services packages are also available.

PERSONAL TRAINERS ON STAFF



TREVER LOJKA

NASM Certified Personal Trainer;
NASM Performance Enhancement
Specialist, Metaboliq RMR & VO2
Max/SUB-Max testing

Trever grew up in Salt Lake City and graduated from the University of Utah with a BS in Organizational

Speech Communication. Fitness has always been a passion that drove the pursuit of boating, scuba diving, skiing, backpacking, and numerous other activities that eventually led to becoming a certified personal trainer and nutrition consultant. After moving back and forth, across the country, in pursuit of personal growth, Trever found himself here in Incline Village in 2013 and is very pleased to call this community home. Throughout his years of training both personally and professionally, Trever has employed a variety of training styles and is comfortable working with clients ranging from those looking to lose weight, gain weight, post-surgery, corrective programing, and athletes looking to push their boundaries.



JILL WHISLER

Registered Dietitian Nutritionist,
certified in Adult and Pediatric
Weight Management, Certified
Health & Wellness Coach -
Wellcoaches, Health & Fitness
Trainer - American College of Sports
Medicine, and mom of three.

Jill's nutrition philosophy is simple - no one "diet" fits all, but a healthy, nutritional regime is built upon whole, fresh, minimally-processed foods. Nourishment is getting the right balance. Cooking, eating patterns, timing of meals, exercise, sleep and stress management all play a role in your health. Jill creatively looks at the big picture to your health. As a working mom of three, she knows how busy life can get, so she can help share tips to help you succeed and set you up for success.



Warming Trend Ahead...

Warm weather is right around the corner and now is the time to plot, plan and place your outdoor living space. Visit Mountain Home Center today for the latest in custom outdoor trends and create an outdoor retreat perfect for lounging, entertaining and memory making.

CUSTOM ORDERS • FREE LOCAL DELIVERY & SET UP • EXCELLENT CUSTOMER SERVICE • Main Showroom: 11403 Brockway Road, Truckee, CA • 530.587.6681 • www.MountainHomeCenter.com





"I recently took some Foam Rolling, Myofascial and Flexibility classes with Trish. What an incredible experience! I have taken many classes, most that beat my body down but this class makes me feel so good after. Every muscle is warmed and fired. This class is a triple threat because you leave stretched, muscles fired and with unbelievable energy. I highly recommend it, it's worth every penny." —Patty

Foam Rolling, Myofascial & Flexibility Release

Foam Rolling is a form of self-myofascial release, or self-massage, that gets rid of adhesions in your muscles and connective tissue. Foam Rolling increases blood flow to your muscles and creates better mobility, helping with recovery and improve performance.

Call 775.832.1310 to make an appointment with certified Personal Trainer Trish McKowen for a personalized foam rolling session, and learn how to "roll" to a better you.



NEW PROGRAMS

Brazilian Jiu-Jitsu

Brazilian Jiu-Jitsu (BJJ) is a martial art sport that focuses on grappling, with particular emphasis on ground fighting. BJJ advocates the concept that a smaller, weaker person can successfully defend themselves against a bigger, stronger, heavier opponent by using technique, leverage, and most notably, taking the fight to the ground. BJJ training can be used for overall fitness, sport grappling, and in self-defense situations. BJJ is considered a martial art, a sport, a method for promoting physical fitness and building character, and a way of life.

Mondays, Thursdays & Fridays
 6pm - 7pm - Kids age 4+
 7pm - 8:30pm - Adults

Fees:

Unlimited Monthly Pass: \$185 or \$165 w/IVGID pass/Rec. Center members

Drop-ins welcome: \$16 or \$14 w/IVGID Pass & Rec. Center members

Register at the Rec Center or at register.yourtahoeplace.com.



EASEL & WINE PARTIES AT THE GOLF SHOP

Get your creative juices flowing at our Easel and Wine painting parties at the Incline Village Championship Golf Shop this winter. You don't have to be artistic to have fun and walk away with an amazing masterpiece because an Easel and Wine artist will walk you through the painting process, step-by-step.

Various local artists will lead these painting parties with their personal expressive style of painting. Register at easelandwine.com or call 775.843.1981. Select Wednesdays, 5:30pm-7:30pm at the Championship Golf Shop (955 Fairway Blvd)

February 19: "Winter Tahoe Bear"
March 25: Masterpiece TBD
April 15: "Paint your Pet"
May 6: "The Golf Course"

Cost: \$40 (includes apron, painting supplies, instruction, a glass of wine (ages 21+) and cheese appetizer. Additional wine available for purchase at the event. The "Paint Your Pet" event will be \$60 and also includes a pre-sketched canvas of your favorite pet's photo.



We love Lake Tahoe,
but there is a big world
out there to explore!

Goldring Travel will deliver YOUR Luxury whether it be sipping champagne while lounging on the deck of an ultra-luxury, all-suite, boutique Seabourn ship or exploring the wilds of Antarctica, Alaska, Asia or more on one of its Seabourn Ventures zodiacs, kayaks or hikes. Is Your Luxury delving into UNESCO Heritage Sites? Dining at The Grill by Thomas Keller? Extraordinary Spa Treatments? Because it is Seabourn, you can have it all...on the same cruise!

SEVEN CONTINENTS. FIVE SHIPS. ALL SUITES.
OPEN BAR. NO GRATUITIES. AND NEVER MORE
THAN 600 PAMPERED GUESTS.



SEABOURN®



Goldring Travel

Be Treated by Your Travel Agent as You Will be Onboard

(877) 2GO-LUXURY

Call Seabourn's World No. 1 selling agent,
Eric Goldring, at (877) 2GO-LUXURY
or email info@goldringtravel.com.

GOLDRING TRAVEL, LLC, 12177 BUSINESS PARK DRIVE, SUITE 6, TRUCKEE, CALIFORNIA 96161 | CALIFORNIA SELLER OF TRAVEL NO. 2127458-40



"I knew I'd need help with more than my swing when I started playing golf again after a 10 year break. I didn't want to pick up any of my old bad habits and wanted to stay healthy when I played. Fortunately, a friend recommended Ashley's golf fit class. The stretching and strength training exercises were easily adaptable to people with different fitness levels. I quickly noticed the benefit of a stronger core and made new friends as well. I've been taking both golf lessons and fitness classes from Ashley since July and highly recommend both." — Incline golfer Laura Cunitz

VISIT THE GOLF SHOP THIS WINTER

The golf season may be over, but the Championship Golf Shop is open year-round and our virtual golf simulator is available to keep your game up to par all year long. Golf Staff is here to assist you with your swing and will help you find that right gift for your special golfer during our great sales. Golf Shop hours are 10am-5pm Monday-Friday (non-holiday).

Sales

Presidents Sale: February 13-17 - 40% off select apparel and all accessories. New clearance product added to 60% off rack.

March Mayhem Sale: March 16-27 - Super clearance on all products in the golf shop (excludes golf balls and clubs).

Indoor Golf

Our FlightScope X2 Elite launch monitor and indoor hitting net are set up in the Championship Golf Shop for the off-season. There are a variety of courses to choose from and 18 holes only takes about an hour. Rates are \$35 per hour (\$25 w/IVGID Pass) or \$20 for 30 minutes (\$15 w/IVGID Pass).

The FlightScope also captures an accurate reading of your swing with Doppler radar, which provides feedback regarding ball flight, swing path and launch angles. Our PGA golf pros Darren Howard, Kyle Thornburg, and Ashley Wood can analyze results from the flight scope and give swing lessons based on those results. Call 775.832.1146 to book winter tee times and lessons.



TITLEIST BALL PROMO

It may still be the middle of winter, but die-hard golfers are already dreaming of spring and the start of golf season in Tahoe. To get your season off to a proper start, we have again partnered with Titleist to offer the Spring Loyalty Rewarded Program this year. **Details will be coming soon and announced via email and the Golf Incline website.**



GET GOLF FIT FOR SPRING

Get a full golf and fitness assessment this spring with PGA Golf Professional and NASM Certified Personal Trainer Ashley Wood. The Gol-Fit Spring Training program will help ward off stiffness, inflexibility, lack of motion, fatigue and possible injury and get your golf game in shape for the 2020 season. Small group sessions will take place at The Chateau March 10th through April 30th. Private personal training is also available.

Tuesdays 10am & Thursdays 8:30am.

Fees: \$30/session (\$25 w/IVGID Pass)

Pre-registration is required. Register at the Golf Shop, call 775.832.1339 or e-mail aew@golfincline.com.



STAFF SPOTLIGHT

Brook Smith La Fata

The Chateau and Aspen Grove's new Events Coordinator Brooke Smith La Fata began working with the District in October 2019. Brooke comes to IVGID with more than 19 years of experience in weddings and events.

Her career began in Las Vegas where she held various food and beverage positions fast tracking to Catering Director for American Golf Corporation. When Brooke moved back to Northern Nevada she worked with Genoa Lakes Golf Club as Catering Sales Director and moved on as Membership Director to Thunder Canyon Golf Club. At Thunder Canyon

she started as Membership Director moving to Event Sales and ultimately Director of Marketing. She has spent the last 9 years leading a private wedding coordination firm and wedding planning resource center in Reno.

As an accomplished events professional she is fully committed to providing an exceptional experience for the community and groups hosting events at The Chateau and Aspen Grove.

Brooke, her husband Dave and their daughter Ruby reside in Carson City, Nevada.

Contact Brooke or Lauren in the Weddings & Special Events department to plan your next function at The Chateau, Aspen Grove, or any of the District's other venues. Call 775.832.1240.

Protect Your Natural Gas Meter This Winter

Heavy snow and ice can damage natural gas meters or create hazardous leaks.

While the best option is to protect your meter with a snow shelter, there are other easy ways to keep an unsheltered meter safe:

Be aware of overhead snow and ice

Allow vents to exhaust properly

Don't bury your meter and vents

Keep meters free of snow and ice by using a broom and not a shovel

Maintain a clear path to meter

If you suspect a natural gas leak, leave the area immediately and call **911** and Southwest Gas at **877-860-6020**. Visit swgas.com/safety for more tips.





GET TO KNOW OUR INCLINE VILLAGE LIBRARY

There is so much to love about Incline Village but did you know that it is also home to an award-winning library? Part of the 12-branch Washoe County Library System, Incline Village Library offers library cards to residents and visitors alike, educational and cultural programs, and access to ideas, information, and entertainment, all in a relaxed, non-commercial environment.

Washoe County Library System supports growing young readers and Incline Village Library offers a welcoming children's area with new children's books for all ages, STEM manipulatives, and early literacy computers. Drop in for the weekly Baby Lapsit Storytime (newborn to 18 months), Toddler Time (18 months to 3 years), or the monthly Pajama Storytime and Stuffed Animal Sleepover (all ages). Once a month the library goes to the dogs with Paws2Read where beginner readers gain confidence by reading to therapy dogs.

Library programs are free, open to everyone, and truly designed for all ages from Baby Lapsit Storytime to Teen Tuesday to drop-in technology help for seniors during the IV Quad Makerspace. At the weekly IV Quad, one can also try the latest virtual reality systems and explore the world, use the sewing machine to mend clothing or complete one of the special monthly projects, create custom buttons and magnets, or use the 3D printer to design a personalized gift.

The monthly Tahoe Talks program features a roundtable discussion on a hot button topic, while Tahoe Treks features inspirational stories from locals about their journeys far and wide. Adults can join the discussion at the Inclined to Read book group or brush up their skills during February's Chess Camp.

Visit us at 845 Alder Avenue or at www.washoecountylibrary.us to apply for a library card, view a complete

listing of events, and experience all the Incline Village Library has to offer.

Story Times

Baby Story Time – for children ages 0 to 18 months. Tuesdays, 11:30am

P.J. Story Time and Stuffed Animal Sleepover – Family Story Time with a bedtime theme. Come in your pajamas and slippers, and bring your favorite stuffed animal for a library sleepover. Last Tuesdays of the month, 6:30pm (Feb, Mar, Apr)

Toddler Time – For children 18 months to 3 years. Thursdays, 11:15am

Ongoing Events

Inclined to Read Book Group – join the reading group and discussion. Last Tuesdays of each month, 10:30am (refreshments and coffee served!)

Teen Tuesdays! – A hangout spot just for teens with food, games, and activities. Every Tuesday, 4pm

Paws2Read – Reading program for children of all ages. Friendly dogs lend a loving, non-judgmental ear to beginner readers. Second Thursdays, 4pm

IV Quad Makerspace – The IV Quad features equipment that the public can use free of charge to create, learn new technology, and practice artistic expression as well as drop-in technology help. Equipment: sewing machine, virtual reality, button maker, 3D printer, Chromebook lab, & more. Every Thursday, 3-5pm

Movie Night – Bring out the family for a family friendly movie and free popcorn. Second Fridays, 6pm

Special Events

Tahoe Talks: Income Inequality
Tuesday, Feb 11, 6:30pm

Molodi - A performance ensemble that takes body percussion to the extreme

blending collegiate stepping, tap, gumboots, beatbox, poetry, and hip-hop dance with guerilla theatre and robust personalities that bring to life a high-energy, rhythmic experience. Wednesday, Mar 11, 4:30pm

Mammals of the Lake Tahoe Basin - Join us for a free trail talk to learn about the engineering methods of beavers and the ecology of many mammals in Lake Tahoe! Wednesday, Mar 25, 6:30pm

Prom Shop – A boutique style shopping experience for guys and gals. All attire and accessories can be “bought” at no cost. (We are currently looking for male and female prom attire. Donations must be of modern style, clean, no rips, tears, or holes.) Tuesdays, Apr 21 & 28, and Wednesdays, Apr 22 & 29, 3-6pm

Farmers’ Market Speaker Series – this speaker series will bring a wide array of topics focusing on backyard farming,

high sierra gardening, high altitude baking, and more. Thursdays, May 14, June 11, July 9, and Aug 13, 5:15pm

Summer Reading Program – sign up, read, earn points, and win prizes all throughout the summer! Sign ups begin June 1. Program runs through July 31

DIY Repair Clinic - Have something that’s been lying around the house broken? Don’t want to see it in the landfill? We can help! A group of local experts will share their knowledge and help the community repair, disassemble and assess their broken items. All ages welcome! Thursday, June 11, 3-6pm



DISPUTE WITH A GOVERNMENT AGENCY, BOARD, COMMISSION, OR DIVISION?

We'll navigate your way through the:

- HEARINGS
- REGULATIONS
- RULES
- PROCEDURES

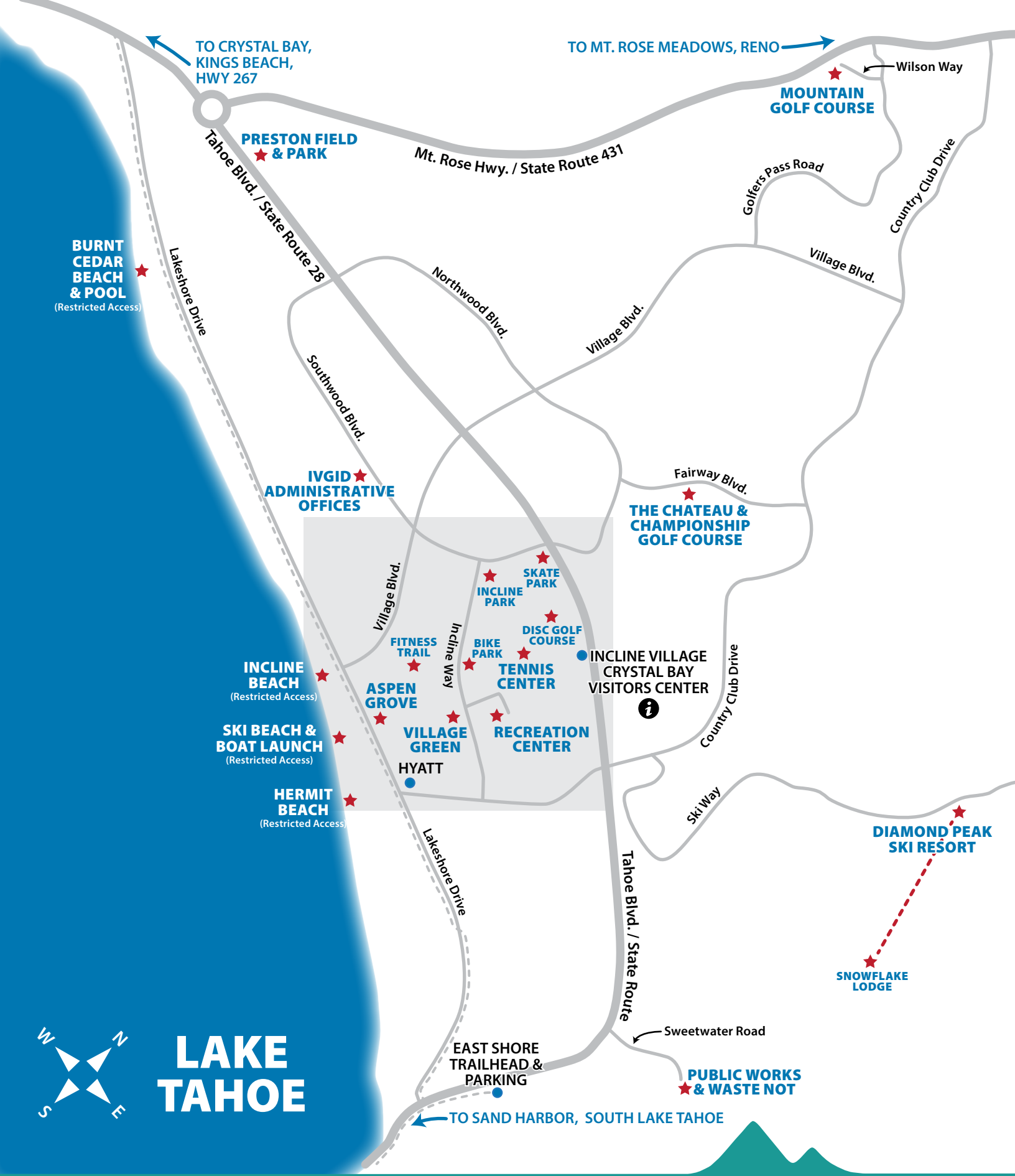
HUTCHISON & STEFFEN
ATTORNEYS

A FULL-SERVICE, AV-RATED LAW FIRM

HUTCHLEGAL.COM

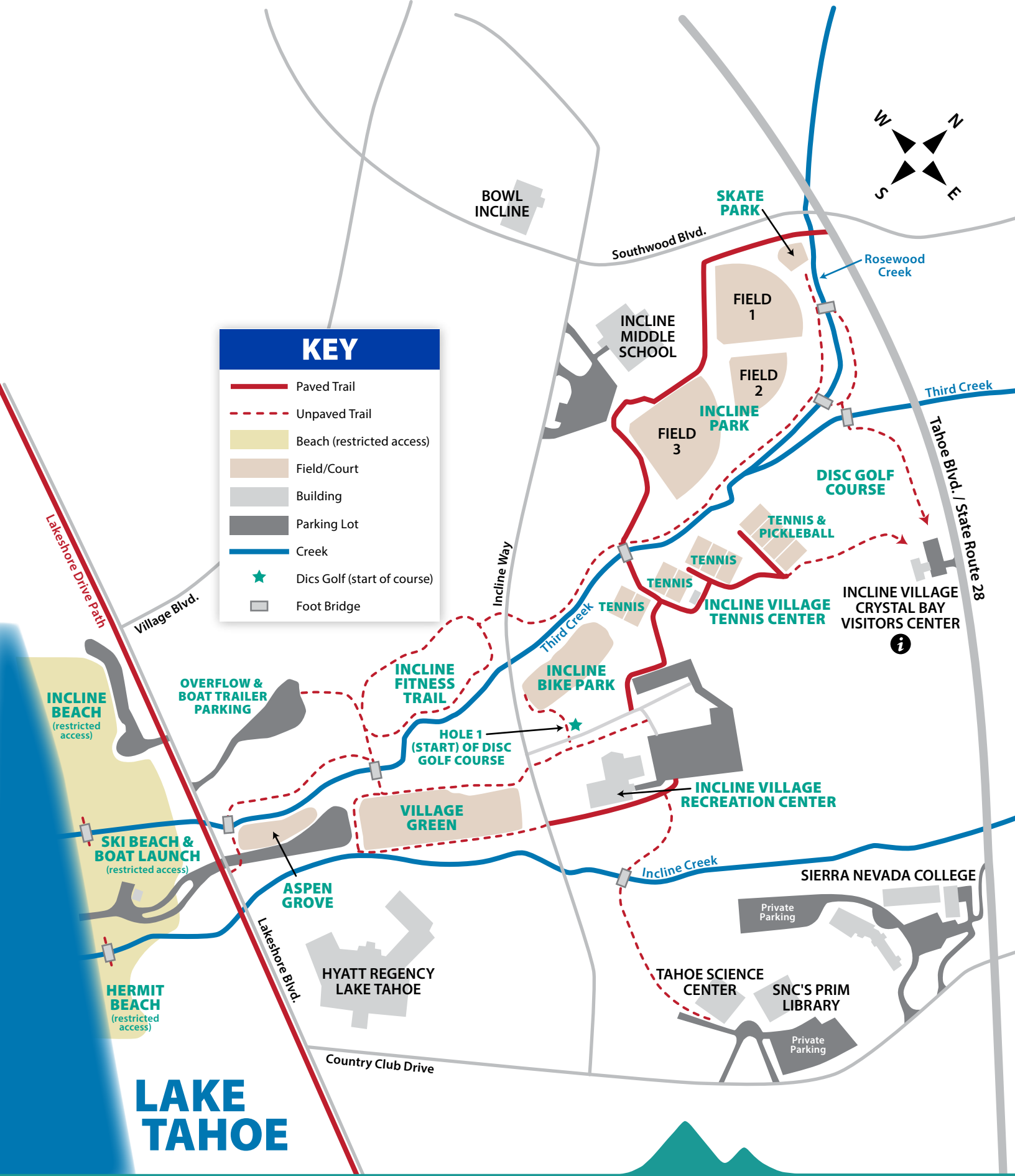
500 DAMONTE RANCH PKWY.
STE. 980
RENO, NEVADA 89521
775.853.8746

PECCOLE PROFESSIONAL PARK
10080 WEST ALTA DR., STE. 200
LAS VEGAS, NEVADA 89145
702.385.2500



Access to IVGID Beaches (Ski Beach, Incline Beach, Hermit Beach and Burnt Cedar) is restricted to IVGID Picture Pass holders, their guests, and Punch Card holders with beach access.

LEARN MORE ABOUT IVGID PASSES AT INCLINERECREATION.COM



Access to IVGID Beaches (Ski Beach, Incline Beach, Hermit Beach and Burnt Cedar) is restricted to IVGID Picture Pass holders, their guests, and Punch Card holders with beach access.

LEARN MORE ABOUT IVGID PASSES AT INCLINERECREATION.COM

2020 WINTER/SPRING CALENDAR

Visit YourTahoePlace.com/Events or DiamondPeak.com/Events for details. Some events and programs may be weather dependent, have holiday closures, and are subject to change.

ONGOING

- Golf Shop open (Mon-Fri)
- Jiu Jitsu (Mon/Thurs/Fri)
- 55+ Snowshoe Hikes & Lunch (Tues)
- Shotokan Karate (Tues & Thurs)
- HHW & E-Waste Disposal (Tues & Thurs)
- Tiny Timbers Gym Time (Tues & Fri)
- 55+ Ski Clinics (Wed/ no clinic 2/19)
- Conversation Cafe (Thurs)
- Adult Ballroom Dance (Fri)
- Indoor Pickleball (Thur/Sat/Sun)

- 2/14 | Child Ski Center Theme Days thru 2/23
- 2/17 | Youth Swim Lesson Registration Winter Session IV thru 2/21
- 2/18 | Incliners Catered Dinner
- 2/19 | Easel & Wine at the Golf Shop
- 2/20 | IV/CB Veterans Club Meeting
- 2/24 | Avy Savvy Workshop
- 2/25 | Fitness Challenge begins
- 2/29 | POW mixer & panel at Diamond Peak Loft Bar

FEBRUARY 2020

- 2/3 | IVGID Community Appreciation Week at Diamond Peak thru 2/9
- 2/7 | Moonlight Snowshoe Hike
- 2/8 | STOKE Mountain Tour
- 2/10 | Avy Savvy Workshop

MARCH 2020

- 3/2 | Avy Savvy Workshop
- 3/3 | Incliners Potluck Dinner
- 3/6 | Moonlight Snowshoe Hike
- 3/7 | STOKE Mountain Tour
- 3/8 | Retro Ski Day & DP Season Passholder Party

- 3/8 | Village Ski Loft Demo Day
- 3/16 | Youth Swim Lesson Registration Winter Session V thru 3/20
- 3/17 | Incliners Catered Dinner
- 3/20 | UnBday Day at Diamond Peak
- 3/22 | Diamond Peak Dummy Downhill
- 3/25 | Easel & Wine at the Golf Shop
- 3/26 | IV/CB Veterans Club Meeting
- 3/28 | Luggi Foeger Uphill/Downhill Festival thru 3/29

APRIL 2020

- 4/3 | Diamond Cut Video Awards
- 4/4 | Underwater Egg Hunt
- 4/11 | Eggstravaganza Hunt
- 4/12 | Easter Egg/Clif Bar Hunt at Diamond Peak
- 4/13 | Jr Golf Camp Registration opens
- 4/15 | Easel & Wine at the Golf Shop
- 4/16 | Summer Day Camp Registration opens
- 4/30 | Diamond Peak Early Bird Season Pass Sale Deadline



Tim Callicrate
Chairman

PO Box 5663
Incline Village,
Nevada 89450

775.336.9925
callicrate_trustee@
ivgid.org

Term expires
2022



Matthew Dent
Vice Chairman

774 Mays Blvd.
#10-573,
Incline Village,
Nevada 89451

775.298.1005
dent_trustee@
ivgid.org

Term expires
2020



Kendra Wong
Secretary

774 Mays Blvd.
#10-294,
Incline Village,
Nevada 89451

916.251.9664
wong_trustee@
ivgid.org

Term expires
2022



Sara Schmitz
Treasurer

932 Lakeshore
Blvd.,
Incline Village,
Nevada 89451

925.858.4384
schmitz_trustee@
ivgid.org

Term expires
2020



Peter Morris
Trustee

PO Box 3029
Incline Village,
Nevada 89450

415.613.5664
morris_trustee@
ivgid.org

Term expires
2020

YOUR GUIDES TO TAHOE REAL ESTATE



JANE
RUBSAMÉN

775 843 0312
NV S.0066076



MARY
KLEINGARTNER

206 604 1200
NV S.0173864



KERRY
DONOVAN

775 750 2190
NV BS.0052696



TANYA
SOULE

775 690 2341
NV S.0170786



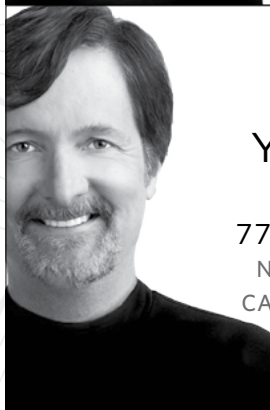
DONNA
TONKING

775 722 6726
NV S.0016096



MEGAN
PARR WARREN

775 303 2672
BS.0143530



MIKE
YOUNG

775 771 2391
NV BS.0029150
CA DRE 0784148



RUTHANN
LUCAS

775 548 6588
NV S.0187599



DEBBIE
HANSEN

775 772 2743
NV BS.0143538

THE RIGHT CONNECTION MAKES ALL THE DIFFERENCE

Chase International is an independent real estate firm specializing in unique and distinctive properties around the Lake Tahoe region. With more than 300 highly-qualified professional Realtors® and a team of luxury specialists in nine offices, we are committed to the success of our clients. Chase International has the highest caliber agents, connections and experience to serve your needs. CHASEINTERNATIONAL.COM

CHASE
INTERNATIONAL
LUXURY LEADER

TAKE YOUR CAREER TO THE NEXT LEVEL, CALL JENNY JOHNSON 775 691 4382



**INCLINE
VILLAGE**

GENERAL IMPROVEMENT DISTRICT

893 Southwood Blvd.
Incline Village, NV 89451

EXCEPTIONAL CARE BEGINS HERE

Offering
**Individualized,
Patient-Centered
Care**



Advanced
**Fellowship-Trained
Doctors**



One of the Only
Hospitals in the
Region Performing
**Direct Anterior
Hip Replacement**



**State-of-the-Art
Imaging and
Rehabilitation
Services**

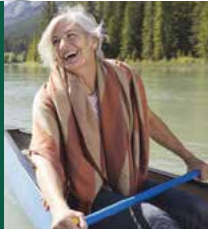


**Sports
Medicine
Doctors**
for Community
Schools and
Associations



**Patient
Destination**
for Injury
Prevention
Education

Using the Most Advanced
Technology and Latest
Minimally Invasive
Techniques for
Shorter Stays



**Total Joint
Replacement**
With Custom-Designed
Implants



**State-of-the-Art
Pain Control**



**TAHOE FOREST
ORTHOPEDICS &
SPORTS MEDICINE**

Exceptional Care Begins Here

A Service of Tahoe Forest Health System

**Make an
Appointment Today!
(530) 213-0225**

www.tahoeorthopedicsandsports.com 