

Incline Village General Improvement District Vol 8 Num 1

IVGID

Quarterly
APRIL 2022



**INCLINE
VILLAGE**

GENERAL IMPROVEMENT DISTRICT
ONE DISTRICT - ONE TEAM

www.yourtahoeplace.com



Elevate
your life.



Koch Elevator has several **residential products**, making it easy to purchase the best products that will meet your needs:

- HOME ELEVATORS
- DUMBWAITERS
- STAIR CHAIRS
- WHEELCHAIR LIFTS (INSIDE OR OUTSIDE)

**Local Family-Owned
Since 2001**

Cell: 775.247.8820

*Authorized dealers for
Inclinator of America, Savaria,
Thyssenkrupp Access, Waupaca,
Matot, Canton and Harmar.*

Off: 775.323-8822
nick@kochelevator.com

**KOCH
ELEVATOR**

924 Incline Way, Suite C, Incline Village, NV
561 Sunshine Lane, Reno, NV

CA LIC 927006 NV LIC 054884



INCLINE VILLAGE PARKS & RECREATION

980 Incline Way • 775-832-1310

The Incline Village Recreation Center offers a holistic approach to fitness, health and wellness, including a range of specialty services you won't find at your ordinary gym or recreation center. Purchase a membership or daily pass to use the 25-yard indoor pool, cardiovascular/strength room and gymnasium or attend a variety of group and water fitness classes.

Visit InclineRecreation.com for rates plus activities, sports leagues and community events organized by the Parks & Recreation Department.



INCLINE VILLAGE TENNIS & PICKLEBALL CENTER

964 Incline Way • 775-832-1235

The Incline Village Tennis & Pickleball Center is located in a picturesque alpine setting along a year-round creek. Our club-like facilities are open to the public with daily court fees or seasonal memberships. The center features tennis courts, pickleball courts, and a pro shop with demo rackets and paddles. A variety of lessons and programs are offered during the summer. Find out more at InclineTennis.com and InclinePickleball.com.

(Pro Shop open May-Oct)



INCLINE VILLAGE GOLF COURSES

Championship Course • 955 Fairway Blvd
775-832-1146 (May-Oct)

A classic 18-hole public course featuring a Robert Trent Jones Sr. design and lake views. This par-72 course was listed "Best in State" 2012 - 2015 by Golf Digest and top ranked on the 2022 Golf Pass Golfers' Choice lists - #17 overall, #2 for conditions and #3 for layout in the U.S.

Mountain Course • 690 Wilson Way
775-832-1150 (May-Oct)

Our 18-hole, par-58 course is fun, affordable, and quick to play with special 9-hole and twilight rates. Bring the family to enjoy the outdoors together.

Book tee times for both courses at GolfIncline.com.



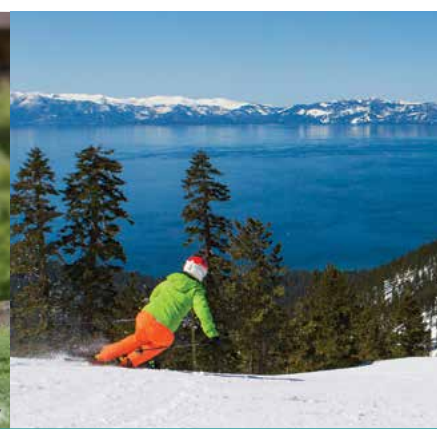
Doug Miranda Photography

INCLINE VILLAGE WEDDINGS & EVENTS

955 Fairway Blvd • 775-832-1240

Create an unforgettable experience for your Lake Tahoe wedding, meeting, celebration or golf event. Our facilities include The Chateau at Incline Village, Aspen Grove, The Championship and Mountain Golf Courses.

The Chateau features a 5,200 sq. ft. ballroom that can be divided for large or small meetings and events. Aspen Grove is the perfect outdoor venue for up to 120 people. View rates and fill out an inquiry form at InclineFacilities.com.



DIAMOND PEAK SKI RESORT (DEC-APR)

1210 Ski Way • 775-832-1177

Purchase season passes for next season in the spring for the best deal. Rates increase May 1st. Visit DiamondPeak.com for pricing and details.

Enjoy acres of wide open spaces and fresh air, perfectly groomed trails, tree skiing and 1,840 feet of vertical. Easy access from parking lot to lifts, ski schools for all ages and the most breathtaking views of Lake Tahoe.

IVGID PICTURE PASS HOLDERS RECEIVE DISCOUNTS AT ALL THESE VENUES
(877) GO-VIEWS • 893 Southwood Blvd, Incline Village, NV 89451
YOURTAHOEPLACE.COM



BOARD OF TRUSTEES

Chairman

Tim Callicrate

callicrate_trustee@ivgid.org

Vice Chairman

Matthew Dent

dent_trustee@ivgid.org

Secretary

Sara Schmitz

schmitz_trustee@ivgid.org

Treasurer

Michaela Tonking

tonking_trustee@ivgid.org

Trustee

Kendra Wong

wong_trustee@ivgid.org

EDITORIAL STAFF

MANAGING EDITOR

Paul Raymore

CONTRIBUTORS

Shelia Leijon

Darren Howard

Jaclyn Ream

Adia Van Peborgh

Jimmy Cheng

Beverly Keil

Kate Nelson

Grahame Ross

Maria Williams

COPY EDITOR

Kari Ferguson

CONTACT US

893 Southwood Blvd.

Incline Village, NV 89451

775.832.1100

info@ivgid.org

PUBLISHING

Each Incline Village/Crystal Bay parcel owner receives one subscription to a domestic address.

ADVERTISING SALES

CCMedia | Reno

775.327.4200

peggy@cc.media | www.cc.media

COVER PHOTO

Photo by Jake Pollock

WHAT'S INSIDE

06	Welcome Message from Steven Phillips
08	Diamond Peak Ski Resort
10	Recap of Specialty Ski Clinics
12	Diamond Peak Spring Events Recap
14	Diamond Peak Video Competition Awards & Volunteer Ski Patrol Awards
16	Q&A With Jimmy Cheng
18	Incline Village Recreation Center
20	Parks & Recreation Youth Summer Camps
23	Incline Village Personal Trainers
24	Aquatics Updates
28	Senior Programs
32	Youth & Adult Sports
34	Beaches & Watercraft Information
36	Tennis & Pickleball
38	Incline Village Golf Courses
42	Public Works Update
43	Leave Only Footprints: What Are Nevada Sovereign Lands?
44	Staff Spotlight
46	Incline Village Recreation Facilities
48	IVGID's Board of Trustees
49	Incline Village/Crystal Bay Neighborhood Map
50	Heart of Incline Village/Crystal Bay

IVGID FACILITIES & COMMUNITY INFO

Aspen Grove Community Center	960 Lakeshore Blvd.	775.832.1240
Burnt Cedar Beach	665 Lakeshore Blvd.	775.832.1232
Championship Golf Course	955 Fairway Blvd.	775.832.1146
Diamond Peak Ski Resort	1210 Ski Way	775.832.1177
Incline Beach	967 Lakeshore Blvd.	775.832.1233
Incline Elementary School	915 Northwood Blvd.	775.832.4250
Incline High School	499 Village Blvd.	775.832.4260
Incline Middle School	931 Southwood Blvd.	775.832.4220
Incline Park	939 Southwood Blvd.	775.832.1310
Incline Skate Park	Tahoe Blvd. & Southwood	775.832.1310
IVGID Administration	893 Southwood Blvd.	775.832.1100
Lake Tahoe School	995 Tahoe Blvd.	775.831.5828
Mountain Golf Course	690 Wilson Way	775.832.1150
Preston Field	700 Tahoe Blvd.	775.832.1310
Public Works	1220 Sweetwater Rd.	775.832.1203
Recreation Center	980 Incline Way	775.832.1310
Sierra Nevada University	999 Tahoe Blvd.	775.831.1314
Ski Beach	967 Lakeshore Blvd.	775.832.1156
Tennis & Pickleball Center	964 Incline Way	775.832.1235
The Chateau at Incline Village™	955 Fairway Blvd.	775.832.1240
The Grille at the Chateau	955 Fairway Blvd.	775.832.1178
Village Green	960 Lakeshore Blvd.	775.832.1310

THANKS FOR MAKING 2021 OUR BEST YEAR YET
\$204 BILLION GLOBAL SALES VOLUME IN 2021

↑ A 36% INCREASE
YEAR-OVER-YEAR

WE HAVE **1,000** OFFICES
IN 79
COUNTRIES & TERRITORIES

46M VISITS TO SOTHEBYSREALTY.COM
↑ 25% INCREASE YEAR-OVER-YEAR
THE MOST VISITS IN ITS HISTORY



TOP LUXURY
BROKERAGE



2021 WEBBY AWARD
PEOPLE'S VOICE
WINNER - REAL ESTATE

WE HAVE OVER
25,000 AGENTS
.....
50 OF THE TOP **250**
TOP AGENTS IN AMERICA

↑ **79%** INCREASE IN
GLOBAL REFERRALS

21% INCREASE YOY IN
REFERRALS AVERAGE
SALES PRICE

#1 MOST PROFILED
LUXURY REAL ESTATE
BRAND IN THE NEWS

47,600 PRESS PLACEMENTS

Source: Meltwater, January 1, 2021 - December 31, 2021

1M SOCIAL MEDIA FOLLOWERS **90M** VIDEOS PLAYED IN 2021

LOCAL EXPERTISE POWERED BY OF THE WORLD'S MOST TRUSTED
AND RECOGNIZED LUXURY REAL ESTATE BRAND.



Terry Hunt Costacos
775.848.3346
NV BS 30017 | CA 01756588



Edee Campbell
775.232.5262
NV BS.144750



Yvette Shipman
775.298.1599
NV S.66464 | CA 01099340



Donna Tonking
775.722.6726
NV S.0016096



Dawn Bursell
775.303.9554
NV 0183480



Judy Loosli
775.378.9353
NV BS.145326



Jayce Coziar
775.530.7272
NV S.0188611 | CA 02054527



**Gretchen Lancaster
Sproehnle**
775.413.0112
CA 02041718 | NV S.0185892



Denise Bremer
775.342.4660
NV S.0173035 | CA 02120073



Terry Barbery
775.220.0686
NV S.0066337 | CA 02092890



Khal Pluckhan
775.298.1196
NV S.0182170



Lauren Garrison
775.742.5493
NV S.0177955



Well Hello Spring! You've come early!

The woody, moist smells of spring are upon us as we emerge from the darker days of winter. The beginning of Daylight Savings Time coincides with our move to warmer days and balmy nights. The Parks staff is celebrating spring by preparing our venues for our community members to enjoy.

Preparing our outdoor spaces for spring and summer is made easier with a little help from our friends. Incline Village boasts beautiful beaches and parks, and litter does not belong here! Luckily, many concerned community members spend personal time actively picking up litter alongside the dedicated Parks staff. These volunteers and IVGID's staff pride themselves in maintaining a pristine environment for you to enjoy.

NOTE: In February, 93 man hours were spent picking up litter and dog waste. There are dog waste bags at many locations and they are checked/restocked daily. Much has been written about dog waste and water quality, so we are extremely grateful for the owners who do utilize the dog waste stations. There is a special group of volunteers committed to cleaning up this noxious stuff, and we thank them for their help.

Another group of volunteers get a huge "Thank You" from the Parks Crew – the famous Goose Patrol! For the first time in a long while, Parks was able to hold a Goose Patrol orientation, welcoming 10 new volunteers and their dogs to the Patrol. Five additional orientations are scheduled for the spring and fall.

NOTE: Geese see our 4-legged furry friends as predators. The presence of the dogs on the beach deters geese from coming ashore. A goose can produce up to 2.5 pounds of goose-poop a day. You can help by not feeding the geese. We greatly appreciate the Patrol's efforts in helping keep geese and their waste off our beaches.

This season may start early, but hopefully not end early in a haze of smoke. The Caldor fire and other other fires that filled the basin with smoke in 2021 are grim reminders that "Only You Can Prevent Forest Fires." We will do our part by increasing defensible space and opening up more of the forests to make them great hosts for outdoor recreation. With fire prevention in mind, we will remain proactive and cooperative with the North Lake Tahoe Fire Prevention District recommendations regarding barbecues and open flames. At the beaches, the Beach Hosts and Beach Ambassadors will be reminding our customers of any restrictions that may apply.

Speaking of Ambassadors... Last summer we embarked on a partnership pilot program between Parks, Beach and Recreation Staff to create the IVGID Ambassador program. The trial program engaged select IVGID employees to assist Parks staff in keeping our beaches, parks and recreation venues secure. The program has been a big success and we are doubling down on it with more Ambassadors and greater visibility. This collaboration between Parks, Rec and Beach staff truly embodies the District motto of "One District; One Team."

The year round Parks Team is pleased to welcome back several returning seasonal employees as well as J1 workers. In these times where job vacancies are more the rule than the exception, we are honored to have these talented, steady workers return. The opportunity to exchange and share cultural knowledge and experiences is a win for all of us.

As we move into the longer, magical days of summer in Tahoe, be thankful to be here, and remember to be kind to one another. We are thrilled to do all we can to help you all get out and enjoy the freedom of our healthy, healing spaces.

Enjoy!

Steven Phillips
Steven Phillips,
Superintendent of Parks

The #1 Real Estate Company in Reno-Sparks is Now in Incline Village



Please Come Visit Us
930 Tahoe Blvd, Suite 902 (in the Raley's Center)
Incline Village, Nevada
(775) 831-6600



Mary Jurkonis
Broker/Manager
775-772-1514
mjurkonis@dicksonrealty.com
NV Lic # BS.145621

DICKSON

REALTY

dicksonrealty.com





2022-23 SEASON PASSES ON SALE

Diamond Peak season passes for the 2022-23 season are currently on sale at the best prices of the year. Season passes come with plenty of perks like no blackout dates during the season, on-mountain discounts, discounts on lift tickets for friends, bonus tickets to partner resorts and more. And if you plan to ski multiple times (and don't want to wait in the ticket line), a season pass is the way to go.

Early-bird pricing goes through April 30, 2022, so act fast to secure the best deal!

Purchase early-bird season passes
online at DiamondPeak.com

Special IVGID Picture Pass Holder Pricing

Did you know that IVGID Picture Pass holders receive special discounted pricing on Diamond Peak season passes? Yes, we know the daily tickets are a great value to begin with, which might make the investment in a season pass seem like a stretch. But if you plan to ski/ride on weekends or holidays, the chance to skip the ticket lines and go straight to the lifts will be worth the investment! Plus, if you add in all the freebies you get at other mountains (bonus days!) and other perks, and compare it to the value price that IVGID Picture Pass holders pay, you'll see it's the best deal in town.

Peak Pledge

Purchase early with confidence, as Diamond Peak offers our Peak Pledge easy refund policy - 2022-23 Season Pass holders are eligible for a full refund (minus a \$25 processing fee per pass) on unused passes if requested by January 15, 2023. No insurance or doctor's note needed. Just contact Guest Services by January 15 if you have not used your pass and would like

a refund. Any refunds after this date will only be permitted with a doctor's note, and will be subject to proration.

Bonus Perks

Diamond Peak Season Pass holders get discounts on the mountain during the ski season when you show your season pass.

- Diamond Peak Rental & Repair Shop: 20% off equipment tuning
- Diamond Peak Base Lodge & Wild Bill's at Snowflake Lodge: 10% off food and nonalcoholic beverages
- Discounts on Diamond Peak Last Tracks event tickets (subject to availability)

Show your 2022-23 Diamond Peak Season Pass to receive free bonus lift tickets at partner resorts during the 2022-23 ski season. As of press time we have partnerships in place with 10 great ski resorts across the West Coast, with more coming throughout the summer.



Tahoe's Best Value

Don't just take our word for it though, ask your friends and other locals who choose to support their community-owned resort and make Diamond Peak their home mountain. Here are

just some of the reasons our pass holders choose to buy a Diamond Peak season pass (taken from our 2021-22 Diamond Peak Guest Satisfaction Survey):

"Easy to park and get on the slopes. Family-friendly. The beginner hill has lake views. Above average food options. Fair lift ticket/season pass prices/policies. Spectacular scenery!"

"Not crowded usually, friendly staff and local skiers and riders, good terrain for everyone. Affordable season pass for IVGID picture pass."

"Very professionally run operation; friendly and knowledgeable staff; great views, slopes for all skill levels; Snowflake lodge is awesome; IVGID season pass is the best value for money."

"After such an amazing experience last season, we bought season passes."

"We have been season pass holders for 6+ years, ever since our friends first told us about Diamond Peak."



THE WAIT IS OVER.

We have dining, lounge, and deep-seating furniture in stock and ready for the summer season. Select from a wide variety of collections. Visit our indoor and outdoor showrooms to shop.



**MOUNTAIN
HOME
CENTER**

Main Showroom 11403 Brockway Road, Truckee, CA
530.587.6681 | MountainHomeCenter.com

Kingsley Bate | Lloyd Flanders | O.W. Lee | Patio Renaissance | Polywood | Seaside Casual | Telescope | Tropitone



RECAP OF SPECIALTY SKI CLINICS

Diamond Peak played host to a number of fun ski clinics put on by the Incline Village Parks & Recreation team this winter including 55+ ski clinics, Skeesters women's clinics, the Village Terrain Park Youth Snowboard Series, and the Sunrise Skin events for uphill users. We hope to bring these and more specialty clinics back to the slopes of Diamond Peak next winter.



PRAXIS

handcrafted skis

Lake Tahoe

U.S.A

WWW.PRAXISSKIS.COM

Annual Custom Pre Order Sale April - May



Custom Builds Starting At **\$599**

Factory: 848 Tanager St Incline Village, NV

Phone: 775-413-9061

Email: info@praxiskis.com

DIAMOND PEAK SPRING EVENTS RECAP

The hills were alive with the sounds of Ullr, uphill racing, dummies crashing, and the Diamond Peak family having a great time on the slopes. We hope you were able to join us for some of our favorite spring events this season.







DIAMOND CUT VIDEO COMPETITION AWARDS

Each winter, this annual video edit contest highlights the incredible local talent we have right here at Diamond Peak with an awards ceremony and screening of the top video submissions received throughout the season. Awards will be given to the top submissions in each category including: All Mountain, Terrain Park, Grom (15 years old & under), and Mini-Grom (6 years old & under). The community will also have the opportunity to vote for their favorite videos for the Viewer’s Choice Award at the event on April 22. Visit the website for more details about the awards ceremony.



DIAMOND PEAK VOLUNTEER SKI PATROL AWARDS

If you’ve ever taken a run at Diamond Peak Ski Resort, chances are you’ve seen them in their bright red jackets, white cross emblazoned on the back... Patrollers.

You can usually find them hanging out in one of the Patrol bases around the mountain - all of which have cool nicknames like “Eagle’s Nest” and “Penthouse” - or out on the slopes assisting guests and serving as first-responders to any on-mountain injuries or emergency situations.

But did you know that there are actually two types of patrollers on the hill at Diamond Peak (and many other ski resorts around the country)?

What we call “Pro Patrollers” are Diamond Peak employees, whereas Diamond Peak’s “Volunteer Patrollers” are volunteers who augment the Pro Patrol staff, providing additional support in all aspects of Patrol operations.

Volunteer Patrollers are all members of the National Ski Patrol (NSP), a federally-chartered 501(c)(3) nonprofit

membership association dedicated to serving the outdoor recreation industry by providing education and accreditation to emergency care and safety service providers.

Here at Diamond Peak, we are incredibly fortunate to have a small-but-dedicated team of 11 Volunteer Patrollers who have repeatedly been recognized for their service, training and professionalism over the years. Many of these individuals have put in decades of service here at Diamond Peak, including one - James “Jimmy” Cheng - who is currently at 49 years of service at Diamond Peak!

According to national averages, the average tenure of a volunteer patroller is about five years; however, the Diamond Peak Volunteer Patrol has an average patroller tenure of 16.6 years of service. All of this tenure, tradition and training has resulted in incredible support to the overall Diamond Peak Patrol department, and has also won the Diamond Peak Volunteer Patrol team numerous awards over the years. Notable awards and achievements include:



Awarded "Outstanding Small Patrol" 15 times since the 1999-2000 winter season - three of those at the national level, eight at the regional level, and four at the division level.

Numerous awards for "Outstanding Alpine Patroller," "Outstanding Professional Patroller," "Outstanding Instructor," and "Outstanding Patrol Director," (amongst others) over the years.

Significance and Qualifications for the Outstanding Patrol Awards - Outstanding Small Alpine Patrol

This award is presented each year to the outstanding small alpine patrol of 40 or fewer members. The award recipient is selected from among nominations for outstanding contributions to the National Ski Patrol System and their Local Community. It is presented to an NSP patrol that has performed in any outstanding manner in the NSP, the snow sports industry, outdoor activities, or rescue, and when it is not possible to single out specific individuals.

Q&A with James "Jimmy" Cheng

If it seems like you've seen James "Jimmy" Cheng on the slopes of Diamond Peak forever, you're not far off. January 2022 marked 49 years of service at Diamond Peak Ski Resort (aka Ski Incline back in the day) for this veteran patroller. Jimmy was officially inducted into the Diamond Peak Pro Patrol on January 1, 1973, and transitioned to a role on the Volunteer Patrol after serving as Assistant Patrol Director through the 1977-78 winter.

We caught up with Jimmy via email to learn a little more about what motivates Diamond Peak's own Patrol Iron Man to keep serving this community and our resort. (Note: interview has been edited due to space constraints; read the full interview at www.diamondpeak.com/news/details/diamond-peaks-volunteer-patrol-awards)

IVGID Quarterly: Why did you first decide to join the Ski Incline Ski patrol?

Jimmy Cheng: Truth is, the Ski Incline Patrol found me. Like my contemporaries, I had my sights set on the bigger resorts. At best I was an

Continued on page 16

Incline Acupuncture & Integrative Medicine



Pain Relief
Weight Loss

Facial Rejuvenation
and so much more



Get back to doing what
you love!



907 Tahoe Blvd.,
STE 5
(775) 799-5479



Pamela Murphy, DOM
www.pammurphy.com



advanced intermediate skier when I began, and I failed to qualify for the Alpine Meadows Ski Patrol. I had applied for jobs around the Tahoe Basin and finally got on the Lift Crew at Ski Incline. In 1972, I took up residence in Incline and was working to improve my skiing. The Assistant Patrol Director, Claudia Geotz learned of my interest and casually invited me to join the fledgling Volunteer Patrol. Under her tutelage I grew in strength and ability. Every accomplishment was cheered and every defeat was built upon. The Patrol became my family.

IQ: What attracted you to the job?

JC: We all have an internal driving force; some call it fate or destiny. Mine always seemed to be in the mountains and skiing was my passion. Ms. Helen Hogan, my high school mentor and counselor, was a Volunteer Patroller and my inspiration. I always found it rewarding to help those in need, especially in situations where my actions had an immediate impact. Before launching into a professional career (Patrollers were not paid well) I wanted to follow my passion while being of service. Patrolling was and is still the best fit.

IQ: After you dropped off the Pro Patrol, what motivated you to stay involved as a NSP member?

JC: Through my own personal trials and tribulations, I felt it important to give back and help train those willing to serve.

IQ: What is your favorite part about being on the Diamond Peak Patrol team?

JC: The best part of being on the DP team is the camaraderie and the lifelong relationships that develop. I stay in contact with two of my closest Patrol brothers from the '70s and countless others from over the years. There is a certain bond that gets built when you strive to make safety a priority and serve in stressful emergency situations. You see the best side of people and humanity.

IQ: If someone is interested in joining the NSP, what advice would you give them?

JC: Don't join for the glory, instead travel the path of humility and service.

Voted "BEST FAMILY SHOP" in AMERICA! SKIING BUSINESS BONNIER



5 minutes from the Reno/Tahoe Airport Open 7 days a Week

SKIS / SNOWBORDS / RENTALS

APPAREL / SEASON LEASES / SHOP SERVICES

(775) 826-9096 475 E. MOANA LANE RENO, NV BOBOS.COM

YOU, ONLY BETTER.

Multi-Specialty Orthopedics · Sports Medicine · Spine Services · Regenerative Medicine · Total Joint Care

Our team of orthopedic specialists work with you to get you back to what you love as quickly as possible.



**SKI &
SNOWBOARD**
OFFICIAL PARTNER

925 Tahoe Blvd., Suite 105
Incline Village, NV

775.580.7600



**Tahoe Orthopedics
& Sports Medicine**

BARTONORTHOPEDICSANDWELLNESS.COM



Recreation Center Hours

(subject to change, please see inclinerecreation.com for current hours)

Monday - Friday: 6am – 8pm
 Saturday & Sunday: 7am – 5pm
 Holiday hours vary, check online at inclinerecreation.com

ABOUT THE INCLINE VILLAGE RECREATION CENTER

The Incline Village Recreation Center is among Lake Tahoe’s finest fitness and recreation centers: a 37,000 square foot, first-class complex offering activities for all ages. Check out the complete selection of programs, activities and equipment for you and your family to enjoy throughout the year.

The Incline Village Recreation Center is excited to announce the renovation of the upstairs restrooms, and we’ve also added a LifeFitness Synergy Multi Station to the Cardio Room that includes a low row, lat pulldown, adjustable cable pulley, dip, TRX station and more! It is beautiful and versatile.

Recreation Center Memberships & Rates

The Incline Village Recreation Center offers memberships at affordable rates, with discounts offered for IVGID Picture Pass holders. You can pay annually or monthly to receive an additional discount. Rates are available for singles, couples, families, seniors and students (ages 6-23). Please see inclinerecreation.com for rates and special offers.

Corporate Membership Program:

Keep your company’s greatest assets (your employees) happy and healthy with a corporate membership. Research proves a healthy employee is a more productive employee. Check out corporate rates online at inclinerecreation.com, stop by the Parks & Recreation Counter, or call 775.832.1300.

Cardiovascular Room

We offer 30 industry recognized cardiovascular machines including: LifeFitness Powermill stepper, elliptical cross-trainers and bikes, Precor elliptical cross-trainers, treadmills and recumbent bikes, Matrix treadmills, ellipticals and stepper, SciFit upper body ergometer, a Versaclimber and a Concept II Rower. Most cardiovascular fitness equipment has a personal television or is connected to the Broadcast Vision Group Cardio Theater System.

Strength Area

This space includes individual Cybex Eagle and Matrix Strength Circuit machines, a LifeFitness Dual Pulley system and Synrgy Strength system with multiple stations, Free Motion Squat machine, dumbbells up to 100

pounds, several fixed barbells, three flat bench stations and a variety of small equipment for resistance, balance, core, flexibility and agility training. Fitness equipment is maintained and serviced regularly.

Group and Water Fitness Classes

42 weekly group and water fitness classes are offered including: Cardio Cycle, Yoga, Zumba, Cardio/Strength, HIIT, Strength Conditioning, Flexibility/Balance/Core, TRX Blast, 55+ Fitness and Yoga, plus Liquid Cardio and Combo (deep & shallow water workout).

Lap Swim and Gymnasium use

Call 775.831.1300 or pick-up a pool and/or Gym schedule at the Rec Center.

Snack Bar/Pro Shop

Located in the main lobby, the Snack Bar and Pro Shop are your stops for disc golf sets, yoga mats, seasonal logo clothing, headphones, swim wear, goggles, ear plugs, socks, energy bars, nuts, sports drinks, water, and snacks.

Kid Zone

This service is currently unavailable. Please check our website for any updates.

Totally Active (Ages 6-17)

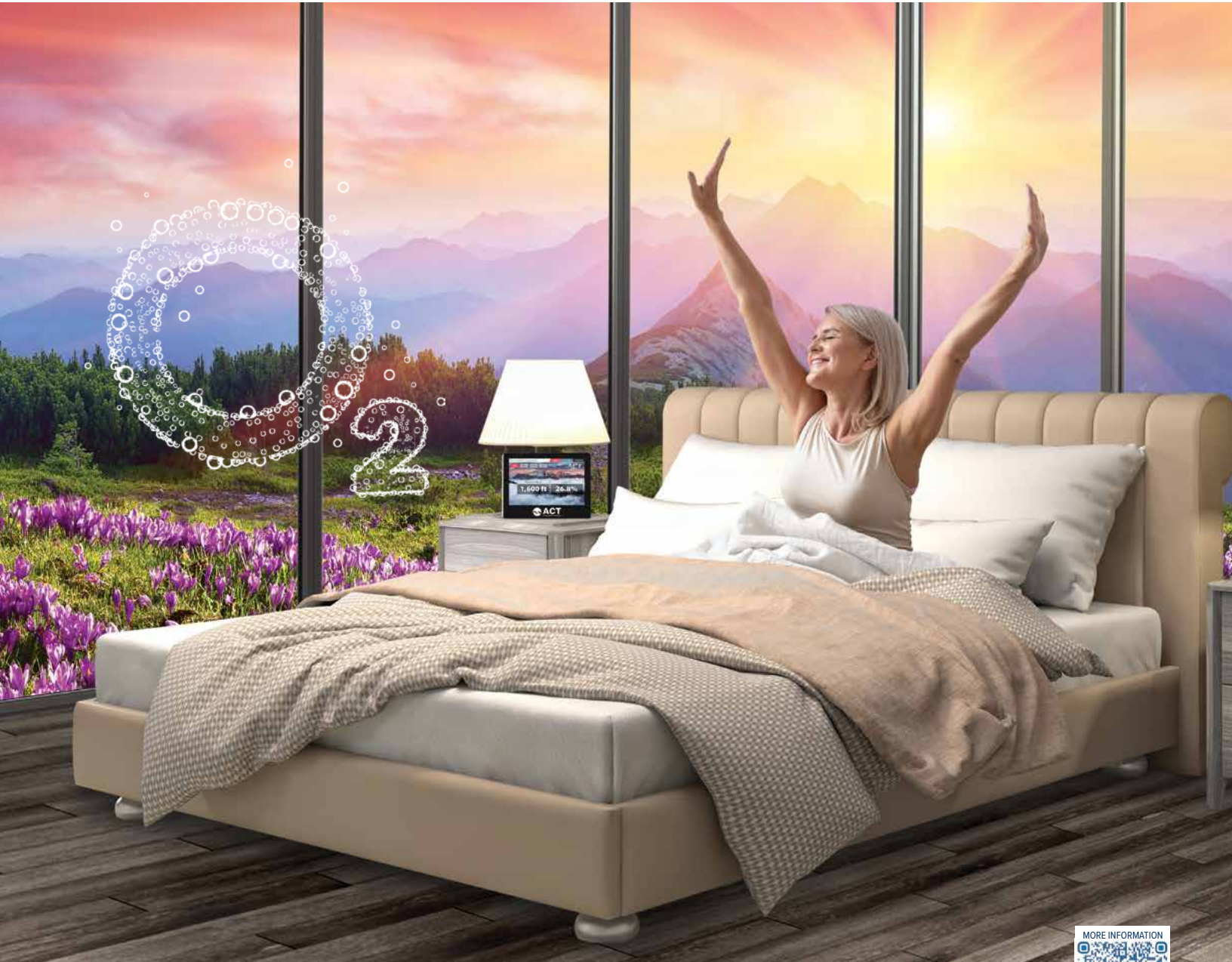
The Totally Active Program is modified and limited at this time. Call ahead for gymnasium and pool schedules. Youth (ages 6-13) must be supervised by a parent or adult age 18 years or older. Totally active participants can use the gymnasium to practice a sport or workout, and a pool lane for lap or free swim when available. Youth (ages 14-17), may be unsupervised for the above activities. To use fitness equipment in the cardio/strength workout area, users must be at least 12 years old, and trained by a staff member.

Daily Totally Active Fee: 12pm - 5pm; \$5/person

Ahhhhh... Oxygen!™

The safest, most effective oxygenation systems on the planet.

Altitude Control Technology's award-winning oxygenation system lowers your effective altitude by as much as 7,000 feet. Eliminate the headaches, insomnia, and fatigue associated with altitude and instead wake refreshed and ready to enjoy your mountain home. Let ACT upgrade your room's oxygen content. Call today!



Imagine how you'll feel tomorrow after sleeping in your oxygenated room tonight.™



ACT
ALTITUDE CONTROL TECHNOLOGY

For more information about what oxygenating your home can do for you, call:

(970) 528.1300 or visit ACT-O2.com

First year service included with code IVGID22

Interested in becoming an ACT Partner? Contact partners@altitudect.com

ACT is the world leader in altitude simulation. Clients include: Harvard Medical School · Mayo Clinic · University of Colorado School of Medicine · Federal Aviation Administration · U.S. Naval Air Systems Command · Olympic Training Centers in 14 countries · More than 50 medical schools and universities on five continents

KIDS SUMMER CAMP OPTIONS

Summer Camp Registration Dates

April 11 - 12: Live in-person registration at the Incline Village Recreation Center for IVGID Picture Pass holders.

April 13: Registration open by phone and in-person to IVGID Picture Pass Holders.

April 20: Registration opens online, in-person and via phone for all (Picture Pass holders and general public)

Tahoe Leadership Program

We are pleased to introduce the Tahoe Leadership Program designed to inspire teens and young adults to develop leadership and communication skills while building trust, improving teamwork and increasing self-confidence. Participants will experience five full days of self discovery and personal development utilizing the unique environment of North Lake Tahoe. Activities will be designed to allow participants to leave the program with increased confidence in navigating and managing peer relationships, leadership skills, social responsibility and goal setting.

Ages: 14 - 21

Days: Monday - Friday

Location: Incline Recreation Center, Incline Beaches (for participants with beach access only) and various destinations within the North Lake Tahoe Area

Fee: \$500

Dates/Times: June 27 - July 1, 9am - 5pm

Junior Lifeguard Camp

The Junior Lifeguard Program is offered to IVGID Picture Pass holders with beach access. This program provides instruction in beach safety, swimming, paddling and encourages teamwork, safety and leadership. Students will have the opportunity to swim, paddle and run, and will also have the opportunity to shadow a lifeguard on the beach.

Ages: 9 - 14

Days/Times: Monday - Thursday, 9am - 1pm

Location: Incline Beach

Fee: \$198 per week, \$360 for 2 week session, plus a one-time uniform fee

Sessions Run: July 11 - August 11

1-week sessions:

Session 1: July 11 - 14

Session 2: July 18 - 21

Session 3: August 1 - 4

Session 4: August 8 - 11

2-week sessions:

Session A: July 11 - 21

Session B: August 1 - 11

Program Requirements:

- Must be pre-registered.
- Must be able to swim 100 yards under 2 minutes, tread water for 2 minutes, float on back for 2 minutes and swim underwater for 15 yards.
- Must wear required uniform.

Mini Guard Camp

An introduction to aquatic safety through discovery and play both in and out of the water. This camp is offered to IVGID Picture Pass holders with beach access.

Ages: 5 - 8

Days/Times: Monday - Thursday, 9:30am - 12:30pm

Location: Burnt Cedar Beach

Fee: \$148 per week, plus a one-time uniform fee

Session 1: July 11 - 14

Session 2: July 18 - 21

Session 3: August 1 - 4

Session 4: August 8 - 11

Program Requirements:

- Must be pre-registered.
- Must be comfortable in chest deep water and swimming with a life jacket.
- Must wear required uniform.

Kelly Brothers
Painting
INC.

BOOK NOW
EXTERIOR
PAINTING & STAINING

KellyBrothersPainting.com 530.550.0806
Bonded & Insured CA LIC #822843 | NV LIC #68238



Summer Paddleboard Camp

Participants will engage in both land and water-based games and exercises that increase stand-up paddle boarding (SUP) knowledge and skills to improve overall fitness level. Learn the proper fundamentals of paddle boarding, prone paddling and surfing, all while emphasizing water safety awareness. Participants must be able to swim! SUP board, paddle, Personal Flotation Device (PFD) and leash all provided. This camp is for IVGID Picture Pass holders with beach access. Contact instructor Michael Smith at 775.230.1387 with questions.

Ages: 8 - 14

Days/Times: Monday - Friday, 9am - 12pm

Location: Ski Beach (participants must have beach access)

Fee: \$365 w/ IVGID Pass (maximum 16, minimum 8 per session)

Session 1: June 27 - July 1

Session 2: July 11 - 15

Session 3: July 18 - 22

Session 4: July 25 - 29

Session 5: August 1 - 5

Session 6: August 8 - 12

Summer Volleyball Camp

Led by Casey Jennings, boys and girls of all abilities are invited to have a great week of fundamentals, skills and games. Players in 5th grade to 12th grade are encouraged to learn the great game of volleyball or strengthen their game.

Ages: 5th - 12th grade students

Days/Times: Monday - Friday, 9am - 12pm

Location: Incline Village Rec Center

Fee: \$300 or \$285 w/ IVGID Pass

Session 1: June 27 - July 1

Session 2: August 1 - August 5

Youth Summer Soccer Camp

Expert coaching by Peter Salazar and summer fun by the lake. A top-class camp in beautiful Lake Tahoe, focusing on technical skills development for all levels, along with a fun and accepting atmosphere. Hablamos español.

Ages: 6 - 17

Location: Incline Park 1, 2, and 3

Fee: \$250 or \$200 w/ IVGID Pass

Session 1: June 27 - July 1, 8:30am - 12:30pm

Session 2: August 1 - August 5, 8:30am - 12:30pm

CUSTOM, ONE OF A KIND JEWELRY DESIGN IS OUR PASSION

LOCATED IN THE BEAUTIFUL RESORT AT SQUAW CREEK SHOPPING PROMENADE FOR OVER 24 YEARS



EXCLUSIVE JEWELER OF CLEAR CREEK TAHOE, EDGEWOOD TAHOE, RITZ LAKE TAHOE & OTHER FINE RESORTS.

PRIVATE JEWELER | CUSTOM DESIGN | APPRAISALS | JEWELRY REDESIGN

530.581.5321 WWW.DOUBLEDIAMONDJEWELRY.COM 400 SQUAW CREEK ROAD, OLYMPIC VALLEY, CA

YOUTH SUMMER CAMPS

TK Summer Basketball Camps

The youth basketball camp at the Incline Village Recreation Center is designed to teach the skills needed to become an all-around basketball player. Coached by Incline High School's Varsity Boy's Head Coach, Tim Kelly.

Ages: K - 8th grade students

Days/Times: Monday - Friday, 8am - 12pm

Fee: \$250, \$200 w/ IVGID Pass

Location: Session 1 & 2 @ LTS, Session 3 @ the Incline Recreation Center

Session 1: July 11 - July 15

Session 2: July 18 - July 22

Session 3: August 8 - August 12

Youth Baseball Camp

Join Incline High head coach Jeff Harrell, and special guest, former Cornell standout Mickey Brodsky, for a great week of skills, drills and game action. All 3rd - 8th grade boys and girls of all abilities are welcome.

Ages: 3rd - 8th graders

Days/Times: Monday - Friday, 3pm - 7pm

Fee: \$250, \$200 w/ IVGID Pass

Location: Incline Park fields

Sessions: July 25 - July 29



Summer Youth Skateboarding Camp with Village Skate School

Led by Cedar Gately with Village Skate School, and held at the Incline Skate Park, these youth summer skate camps are for skaters of all abilities. Whether you want to learn how to skate or you want to improve your skills, these camps are for you!

Ages: 5 - 13

Days/Times: Monday - Friday, 9:30am - 11:30am

Fee: \$250, \$200 w/ IVGID Pass

Location: Incline Village Skate Park

Session 1: June 27 - July 1

Session 4: July 25 - July 29

Session 2: July 11 - July 15

Session 5: August 1 - August 5

Session 3: July 19 - July 23

Session 6: August 8 - August 12

Session 7: August 15 - August 19



www.AspenLeafInteriors.com | 530.338.1088 | design@alifirm.com | CID#6680



ASPEN LEAF
INTERIORS
BY MARGIO DROGHA

Pet Network
HUMANE SOCIETY

Hooray
FOR
HOLLYWOOD

PRESENTED BY THE DAVE & CHERYL DUFFIELD FOUNDATION

**SATURDAY,
JUNE 11, 2022**

AT THE
**HYATT REGENCY
LAKE TAHOE**

TICKETS & SPONSORSHIPS AVAILABLE AT
WWW.PETNETWORK.ORG
FOR MORE INFORMATION CALL 775.832.4404 X108



INCLINE VILLAGE RECREATION CENTER PERSONAL TRAINERS



Robin Elley,
ESA (Exercise Science Academy) Personal Trainer, Pilates, YogaFit Levels 1,2,3, IFTA (Interactive Fitness Trainers of America) Water Fitness and Barre certified



Sandy Ravens,
Aerobics and Fitness Association of America, Interactive Fitness Trainers of America Aqua Fitness, Spinning and Zumba certified



Sue Jenkins,
ACE Certified Personal Trainer, London Central Fitness Instructor, IBBFA (International Ballet Barre Fitness Association) Barre Certification Level 1, Yogafit Level 1, Speedo Aqua Fitness, Step Reebok, TRX, Zumba, Strong by Zumba and 55+ Fitness certified



Kristen Miller,
Spin, SCW Group Fitness, TRX, Expert Rating Personal Training certified

Your Community. Your Hospital.

Open 7 days a week, 24 hours a day, **Incline Village Community Hospital** offers convenient access to high-quality healthcare in North Lake Tahoe.

- **24-Hour Emergency Care:** Board Certified Physicians, Registered Nurses, and Medical Technicians
- **Surgical Services**
- **Diagnostic Imaging Services:** X-Ray, CT Scan, and Ultrasound
- **Incline Health Center:** Family Medicine, Internal Medicine, Orthopedics, Behavioral Health, Pediatrics, Cardiology, Palliative Care, Ear, Nose & Throat Specialties, and Primary Care Clinic
- **Eye Care Center**
- **Laboratory Services**
- **Physical Therapy and Medical Fitness**
- **Health, Wellness, and Community Education Programs**
- **Hospice and Home Health Services**
- **Charitable Giving and Volunteer Opportunities:** IVCH Foundation and Hospital Auxiliary



880 Alder Ave, Incline Village, NV 89451 | (775) 833-4100 | www.inclinehospital.com



AQUATICS UPDATES

Group Swim Lessons

Swim lessons are offered for children 6 months to 12 years of age. Please refer to the swim lesson level descriptions online: www.inclinerecreation.com. If your child is between two levels, please register for the lower level (the

instructor can give them more advanced skills to work on if needed).

Registration can be done online, in person at the Recreation Center Counter or by calling 775.832.1310. To register online visit www.register.yourtahoeplace.com. If you have any questions or comments about swim lessons, please feel free to contact the Aquatics Office at aquaticschedule@ivgid.org.

All Burnt Cedar swim lesson participants and guardians must be valid IVGID Picture Pass holders with beach access.

Recreation Center Afternoon Lessons:

Swim lesson sessions (registration to take place with camp registration):

- Session 1: June 27 - 30
- Session 2: July 11 - 14
- Session 3: July 18 - 21
- Session 4: July 25 - 28
- Session 5: Aug. 1 - 4

Burnt Cedar Morning Lessons:

Swim lesson sessions (registration to take place with camp registration):

- Session 1: June 27 - 30
- Session 2: July 25 - 28
- Session 3: Aug. 15 - 18

Youth & Adult Private, Semi-Private Swim Lessons, Dive Lessons, all ages

Private lessons are available with Water Safety Instructors, as well as stroke clinics with our swim coaches. All private lessons are subject to availability of instructor staff. Lessons must be paid for in advance; payment must be made at the Recreation Center Counter.



HOLM
Interior & Exterior Work
We make your home better.

775.298.2727 | HolmConstructionTahoe.com

NV #81893
CA #941072

We're here for your ever-changing financing needs

- Purchase a new home
- Reduce monthly payments
- Consolidate debt
- Fund college expenses
- Home improvements and more!



SHANE BRANINBURG

NMLS #1691523 | LOAN OFFICER

775.229.5772

Serving NV & CA

shane.braninburg@apmortgage.com



CA DRE #01215943 | NV MB 2941/164 | NMLS #1569726/1850
Licensed by the Dept. of Business Oversight under the CRMLA



LAKE TAHOE, NEVADA | INCLINE VILLAGE



PANORAMIC LAKE VIEWS | SUPERIOR BUILD

Welcome home to 547 Sugarpine Drive, a low-elevation home with panoramic lake views from almost every room in Lake Tahoe. Spanning almost half an acre in Incline Village, meticulously manicured grounds greet you on this street-to-street lot. Wood-encased steel beams lift the high ceilings of this magnificently designed and fully furnished home with style. Private house manager/au pair quarters offer additional space with separate entry. Second master suite accommodates main level living and the elevator moves through each level. Home offices inspire working from home with lake views. Living and entertaining spaces flow throughout from the large open living room to the movie theater, family/game room with bar, game tables, and sauna. Radiant heated decks each covered with tall ceilings invite a BBQ and relaxation in the covered hot tub under the stars. Backyard oasis beckons with custom water features, fire pit and bocce ball/corn hole courts. Four car oversized tandem garage with workroom accommodates boat and multiple vehicles. Radiant heated driveway, six gas log fireplaces, generator, and two new Lochinvar boilers welcome you home during Tahoe winters.

6 bedrooms
6 1/2 bathrooms
Offered for \$13,000,000



TANYA SOULE
REALTOR®

LUXURY MARKETING SPECIALIST
INCLINE VILLAGE REAL ESTATE. ELEVATED

775 690 2341

tanya@LivingTahoe.com

NV S.170786

CHASE
INTERNATIONAL
LUXURY LEADER

VISIT LIVINGTAHOE.COM

experience video tours

walk 3D floor plans

browse 2D floor plans

view photos

explore aerial views

AQUATICS



Pre-Swim Team & Northern Nevada Aquatics Swim Team (NNA)

Come join Incline's premier swim team for both competitive and novice swimmers. Our USA Swimming certified coaches will evaluate appropriate levels and practice times for each participant. For those who are participating in USA Swimming, the opportunity to travel to USA Swim meets will be available. Swim team fees are due monthly. Please refer to the Swim Team level descriptions on the website. Ages 6+.

Splashes and Glasses

Swim, connect and indulge with other women on Thursday evenings. The program is focused on beginner, intermediate and advanced skills. Swim and then join the group for an optional après swim outing at various locations around town.

Fee: \$12, \$10 w/ IVGID Pass.

Swim Around Tahoe

Complete this program by swimming in the pool, the lake, or whatever facility you desire! Just record your yardage and we will track your progress. Upon completion of the 71-mile journey you will receive a T-shirt and your name on the "Finisher's Plaque" at the Incline Recreation Center pool. This is an ongoing program for all ages with annual registration.

Fee: \$35, \$28 w/ IVGID Pass.

American Red Cross Lifeguard Training Class

This course includes Lifeguarding, CPR/AED and First Aid certifications. All applicants must be able to pass a skills prerequisite swim test. Must attend all classes and complete all online course work to be eligible for the final exam.

Ages: 15+ years

Location: Recreation Center Pool

Fee: \$205, \$155 w/ IVGID Pass

Deadline to register: 7 days prior to class start date



Session 1: April 4 - 8, 12pm - 4pm

Session 2: May 28 - 30, 11am - 6pm

Session 3: June 4, 11, 18, 12pm-7pm

Session 4: June 23 - 25, time TBD

American Red Cross Water Safety Instructor Class

Learn to be a Water Safety Instructor and teach swim lessons. This class breaks down each stroke and trains you to teach swimming to all ages by incorporating creative teaching methods and covering basic water safety techniques.

Ages: 16+ years

Dates: June 5, June 12, June 18

Time: 12pm - 7pm

Location: Recreation Center Pool

Fee: \$225, \$170 w/ IVGID Pass

Registration opens: 7 days prior to class start date



LAKE TAHOE SCHOOL

Small School. Big Education.

PreK-8th Grade • Independent • Fully Accredited

Where disciplined minds, sound character, healthy bodies, and creative spirits thrive.



995 Tahoe Boulevard, Incline Village, NV • 775.831.5828 • www.laketahoeschool.org



**HE CAN
SEE YOU:
NOW.**

Aurosis Reddy, DO

**Primary Care in Carson City.
Same- & Next-Day Appointments Available.**

renown.org/carson

Renown[®]
HEALTH

SENIOR PROGRAMS

Senior Mountain/E-Biking

IVGID Senior programs is ready to host the spring/summer 55+ Mountain Bike/E-bike Program coming up soon! Starting in June, sign up and explore bike paths and off road trails throughout the Lake Tahoe Basin and Truckee. This program welcomes riders of all abilities from beginning levels to moderate intermediates.

Dates: TBD

Fee: \$14, \$11 w/ IVGID Pass

Locations: TBD

Conversation Café

Conversation Café is a drop-in forum hosted by the Senior Programs staff. Interact with people, share diverse views and a passion for engaging with others over interesting topics, local issues, and world news items. Candid discussions about selected topics elicit frank comments, and the dissemination of information, often with humorous anecdotes and interjections.

Location: Aspen Grove

Dates: Thursdays, except holidays, 10am - 11:15am

Fee: Free. Donations accepted for coffee and snacks.

55+ Hiking Series

Join IVGID Senior Programs every Tuesday for guided hikes to beautiful Lake Tahoe locations. Meet in the back of the Recreation Center parking lot. Bring water, lunch and sunscreen (camera and hiking poles optional). Wear appropriate shoes and clothing.

Dates: May 3 – October 25

Time: 8:30am – 3:30pm*

Fee: \$14, \$11 w/ IVGID Pass



Schedule & Details: Check inclinerecreation.com

** some hikes require more/less time.*

Summer Moonlight Hikes with Wine & Cheese Socials

These 1-mile-long paved-road hikes to the Crystal Bay lookout site, are sponsored in collaboration with the National Forest Service, and usually include a spectacular sunset and ensuing moonrise. Participants are encouraged to wear warm clothing and bring a flashlight. The outing includes transportation, wine, cheese and snacks provided by IVGID Senior Programs. Sign up and enjoy the views, friends, refreshments and fun!

If you would like to participate, but are unable to hike either or both ways, you may ride in the van to join the group at the top and enjoy the views and the fun! Meet at the Recreation Center At 4:45pm for a prompt departure.

Fee: \$25, \$20 w/ IVGID Pass

Dates: 5/16, 6/15, 7/13, 8/11, 9/9, 10/10



BASSETT
FLOORING | Tahoe-Truckee

We carry high-quality hardwood flooring and carpet ideal for your mountain home. Visit us and explore our amazing selection at the Pioneer Commerce Center in Truckee.

10800 Pioneer Trail, Unit 3, Truckee
Since 1979 | office@bassettflooring.com
530 582.7428 | CA LIC #345494



Beach Bocce Ball Sunset Socials

Join players at the Recreation Center Bocce Ball courts for organized friendly competition with wine, music, snacks and fun, and different theme decorations each week. Players can dress for the party! The first two themes will be Hawaiian and Mexican. These drop-in sessions are open to all adults and seniors (21+). After play, stay for the optional potluck. Bring a main dish, side dish, or a dessert to share, along with your favorite beverage and personal picnic supplies. Come join this fun, relaxed group and make some new friends!

Dates: Thursdays, June 2 - August 30

Time: 4pm - 5:30pm (BBQ 5:30pm - dusk)

Fee: \$14, \$11 w/ IVGID Pass (per week)

Senior Transportation

The Senior Transportation Program is a collaborative effort provided by IVGID Senior Programs, Washoe County, NDOT and RTC. Services include regular transportation opportunities for shopping, errands, outings, and medical or personal appointments. This door-to-door, reliable, affordable service provides local seniors a way to get around, run errands, make appointments, and take care of business. Reservations are required. Please call the Senior Transportation Hotline at 775.886.1020 and leave the requested information for local errands at least 24 business hours in advance for the Tuesday, Wednesday and Friday services. The fee for regular Tuesday, Wednesday or Friday weekly transportation is \$5.

“On Demand” transportation is available for other individual needs. \$40 per person includes a same-day round trip for errands, appointments, personal services, etc (additional fees apply after 3 hours). Airport transportation services (drop-off or pick up) are \$50 per person. Book “On Demand” transportation services at least 72 business hours in advance at 775.886.1020.



Serving Lake Tahoe Since 1981



Covering You and What You Value For Over 40 Years.

So thankful for the trust and dedication you have placed in us and the meaningful relationships we have formed.

Call Menath Insurance.

800-756-6507 | 775-831-3132

menath.com

Personal, Business & Health

Local Experts | National Reach



Transportation services may be subject to alteration or cancellation in extreme weather and are subject to driver and vehicle availability. Requested destinations are limited to Washoe County and adjacent communities (i.e. Carson City, Stateline, Truckee, and Kings Beach).

Incline Village/Crystal Bay Veterans Club

Veterans, supporters and community members are always welcome to join the Club and the monthly lunchtime meetings! General Membership meetings are held the last Thursday of the month, January through October, from 12-2pm at the Chateau, 955 Fairway Blvd, in Incline Village. Join this dynamic group and be involved with special events and unique opportunities to honor and support local veterans, military service agencies, and special veteran support operations in the community, state, country and world. Lunches are free for dues paying members \$30 Annual Membership and \$7 for non-members and guests.

Incliners

The Incliners is the longest-running IVGID senior program providing social and educational opportunities for more

than 500 seniors 49+. The club usually meets at The Chateau from 5:30 – 9pm on the third Tuesday of each month for a catered dinner followed by bingo, trivia, guest speakers, music, or dancing. Annual dues are \$25/per person.

Advanced reservations are required for catered dinners (no walk-ins are admitted). Price per member is \$30, non-members and guests are \$40. Reserve your space and pay online at www.incliners.org.

For additional information about how to join Incliners, make dinner reservations, or access our latest newsletter go to www.incliners.org.

Trips, Tours & Adventures!

A spring/summer lineup of Trips, Tours, & Adventures is just around the corner! Plan to get out of town for shopping, tours, wine tasting, and a host of other excursions. Look for flyers and updates in the Recreation Center or check in with the Recreation Counter staff for the latest information!

TAHOE FOREST HOSPICE

Gift & Thrift

893 Tahoe Blvd, Ste 1500, Incline Village, NV

On the corner of Tanager Street and Enterprise Street next to the underground parking lot.

Shop: Tues - Sat, 10am - 5pm (closed 1-1:45pm)

Donate: Tues - Sat, 10am-4pm (or until full)

We accept clean, cared for clothing, shoes, accessories, household goods, and current books. We are unable to accept furniture or large items.

Contact: (775) 298-7901

Volunteer: Interested in volunteering?

Call (530) 582-3518



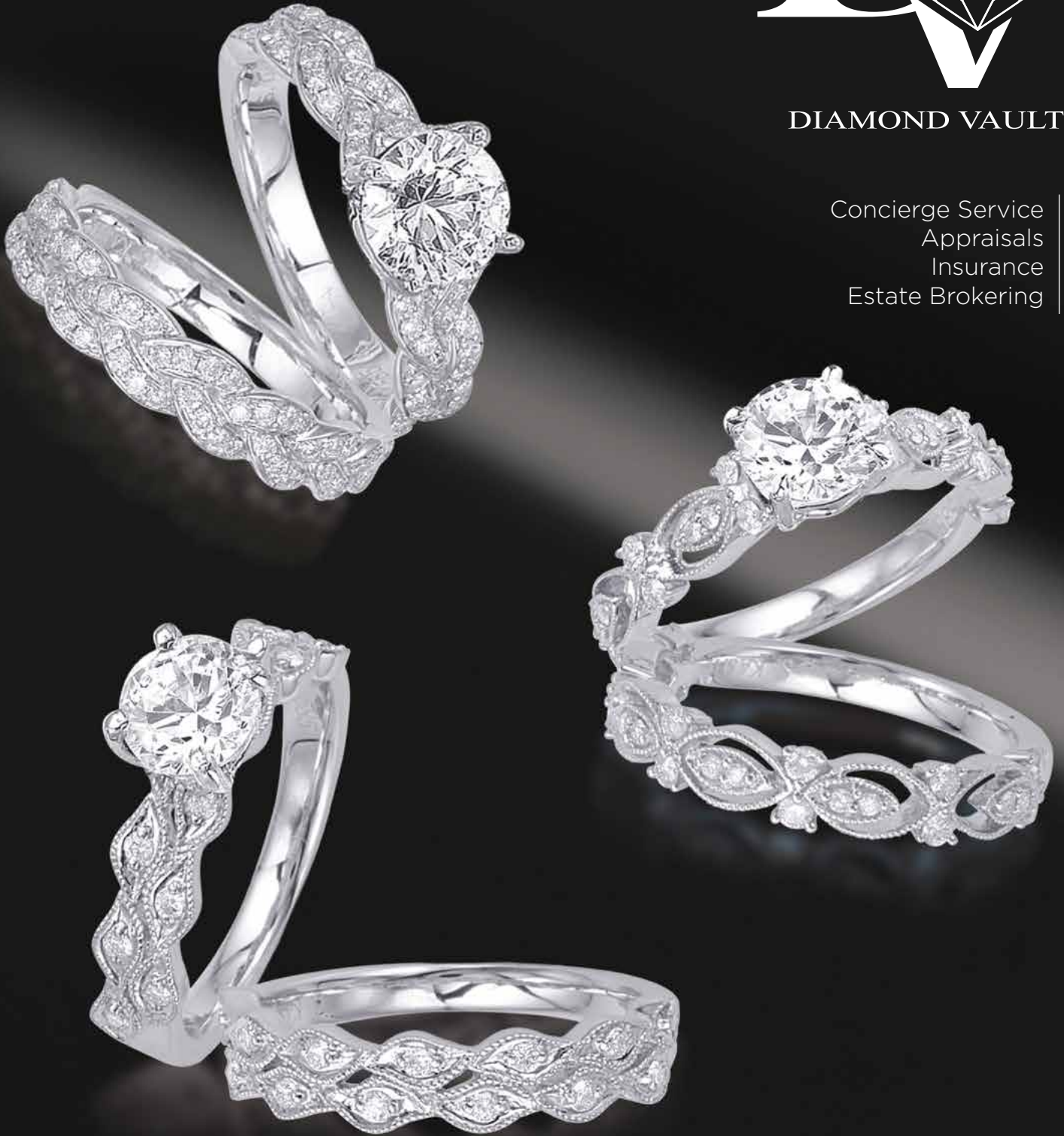
tfhd.com
Store: (775) 298-7901

Buy, Sell or Trade your Diamonds
With Northern Nevada's Only
Diamond and Fine Jewelry Broker.



DIAMOND VAULT

Concierge Service
Appraisals
Insurance
Estate Brokering



TWO LOCATIONS

4950 KIETZKE LANE, SUITE 301, RENO | 4849 COCHISE STREET, SUITE 103, CARSON CITY

DIAMONDVAULTRENO.COM



Coed Softball Leagues

Teams play a total of 8-10 league games. The top four teams from each division qualify for playoffs. Games will be played at Incline Park #1 field.

Ages: 18+

Days: Coed D (Wed.) & E (Thur.), early June through late August, 6pm - 10pm

Men's Soccer League

Looking for more soccer time? Join us for our debut Men's Soccer League! Teams play a total of 8-10 league games at the IP 3 field. The top teams from each division qualify for playoffs.

Ages: 18+

Days: Mondays, early June through late August, 6pm - 10pm

Mens Softball League

Teams play a total of 8-10 league games. The top four teams from each division qualify for playoffs. Games will be played at Incline Park field #1.

Ages: 18+

Days: Tuesdays, early June through late August, 6pm - 10pm

YOUTH & ADULT SPORTS LEAGUES

Spring/Summer Youth Sports

Girls Softball League (April - June)

Come play softball!

Ages: 1st - 8th grade

Days: Mondays, Wednesdays, Fridays, April 18 - June 3

Spring/Summer Adult Sports

Coed Soccer League

Come kick it with us in outdoor adult coed soccer! Teams play a total of 8-10 league games. The top four teams from each division qualify for playoffs.

Ages: 18+

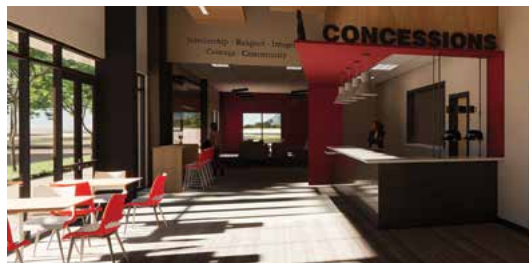
Days: Wednesdays, early June through late August, 6pm - 10pm



**NEW STUDENT ACTIVITY CENTER
COMING 2022**

**The #1 College Prep Private School in the Reno Area Constructing a
Premier 24,004 Square-Foot Facility to Serve Community**

Grades 3-12 | Applications Open Now for 2022-2023



LEARN MORE
about our programs, enrollment
and Campaign
sageridge.org/AIM

BUILDING YOUR DREAMS

CALIFORNIA & NEVADA

RUBICON BAY - TAHOE CITY - INCLINE VILLAGE



LARGE RENOVATIONS, ADDITIONS AND NEW HOMES

Reinventing and Rejuvenating your Old Tahoe to Mountain Modern Home





BEACHES & WATERCRAFT INFORMATION

The four IVGID-managed beaches - Ski Beach, Incline Beach, Burnt Cedar Beach, and Hermit Beach - are located on Lakeshore Drive between the Hyatt Regency Lake Tahoe Resort and State Route 28.

Incline Beach

967 Lakeshore Blvd.

Incline Beach has a nice sandy beach and swimming area if you need to jump in the water to cool off. There are several picnic areas, a playground, a non-motorized watercraft concession provided by Lake Tahoe Water Sports, and a full-service outdoor bar provided by Incline Spirits that offers a selection of drinks and cocktail service during the summer months.

Ski Beach

967 Lakeshore Blvd.

Ski Beach has a boat launching facility, picnic areas, two volleyball courts, a bocce ball court. A creek runs through Ski Beach with lush grassy areas and trees to provide leisurely shady walks. There are kayak/canoe/paddleboard storage rentals and an easily accessible boat ramp.

Hermit Beach

967 Lakeshore Blvd.

Hermit Beach is the name of the small beach on the east side of Incline Creek, next to the Hyatt Regency Lake Tahoe.

Burnt Cedar Beach

665 Lakeshore Blvd.

Burnt Cedar offers a newly renovated outdoor pool with waterslide and an adjacent toddler pool, a small sandy beach with a protected swimming cove, a large grassy point with benches, playground, non-motorized watercraft concession provided by Lake Tahoe Water Sports, and multiple barbecue and group picnic areas. The full-service outdoor bar provided by Incline Spirits offers a selection of drinks with cocktail servers offering beach-side service.

More Information

Pool hours are posted on our website and paper copies can be picked up at the Recreation Center or the Burnt Cedar Beach gate. Beach hours are from dawn until dusk, with beach gate hours posted on our website. Incline Village beaches are restricted-access - please refer to our website

inclinerecreation.com for rules and access restrictions. For an additional fee, boat ramp access at Ski Beach is available (see Watercraft Launch Passes on this page).

For more information regarding recreation privileges and our policies, please visit our website: inclinerecreation.com. For group picnic area reservations and other IVGID facility rental information, please call 775.832.1310.

2022 Beach Admission Rates

Adult (18+)	TBD*
Child (6-17)	TBD*
Children (0-5)	TBD*
Picture Pass Holder	FREE
Boat Launching	TBD*

Annual Watercraft Launch Pass

May 1 - April 30	TBD
------------------	-----

* Please see inclinerecreation.com for current Beach Admission Rates

Thanks for joining us!

In the spirit of creating a memorable experience for you and yours, please adhere to the following:



- Smoking or vaping of tobacco products is only allowed in designated areas on IVGID-managed beaches and other facilities. Please check with District staff for designated areas. Absolutely no smoking or vaping of marijuana products are allowed at all District-owned and operated facilities. For more information and to read the full resolution, see www.yourtahoeplace.com/news/incline-village-trustees-ban-smoking-at-all-district-facilities.
- Please practice respectful beach etiquette. Be present at the beach property to enjoy your reserved space. Our beaches get extremely crowded. Be mindful of the amount of space you need on the beach. Share the beach and be kind to your neighbors.
- Glass bottles and containers are not allowed at the beach.
- Your lovable pets are welcome at the Village Green. Pet play on **Ski Beach** is available seasonally from October 15 to April 15 only.
- Keep a close watch on your little ones!

Watercraft Launch Passes

Daily watercraft launch passes for boats and jet skis are available to valid IVGID Picture Pass and Recreation Punch Card holder with beach access at the Ski Beach. Annual Launch Passes are available to IVGID Picture Pass holders at the Parks & Recreation Department Counter or the Ski Beach gate. A current vessel registration is required with a launch pass application. Please call 775.832.1310 for more information.

Annual Watercraft Launch Pass

In order to purchase an annual pass (valid from May 1, 2022 - April 30, 2023) please go to the Parks & Recreation Department Counter or the Ski Beach gate. Bring your valid beach access IVGID Pass, current vessel registration in the Resident's name, current driver's license and complete an application.

For watercraft rules and regulations, please search for "Boat Launching & Watercraft Information" on www.InclineRecreation.com.

Off-Season Boating: During the off-season, 24-hour advanced reservations are required to launch a watercraft, when water levels and other conditions allow. Visit the Watercraft

& Boat Launching page on our website (inclinerecreation.com) for more information about off-season boating.

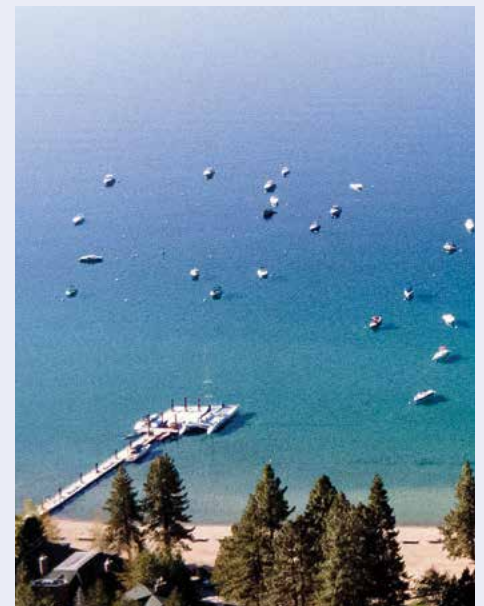
Tahoe Boat Inspections Move to Roadside Stations

The 2022 boating season officially begins May 1, 2022 and Tahoe boat inspections are streamlining the program.

- ALL full inspections and Tahoe In & Out sticker sales will take place at Roadside Inspection Stations ONLY.
- Remember to keep your blue Lake Tahoe inspection seal intact to streamline your launch at the ramp. 2022 Tahoe Only stickers can be purchased at any launch ramp for vessels with an intact Lake Tahoe inspection seal.
- Plan ahead before coming to ensure you are aware of all new requirements and inspection locations.
- Remember to clean, drain, and dry your boat and equipment to protect your boat and the waters you enjoy!

Hotline: 888.824.6267

www.TahoeBoatInspections.com.



**No Beach Parcels: If your parcel has been assessed as "No Beach," your IVGID Picture Pass or Recreation Punch Card will not grant you beach access but does retain all other IVGID privileges.*



Note: There are days the courts will be limited or unavailable due to tournaments and other events. Please take that into consideration when purchasing your membership pass. All membership passes include Pickleball play.

TENNIS & PICKLEBALL CENTER UPDATES

Located along a year-round babbling creek, the Incline Village Tennis & Pickleball Center offers tennis courts, pickleball courts, and a fully-stocked Pro Shop. The center is located adjacent to the Recreation Center at 964 Incline Way.

Clinics, socials, mixers, tournaments, and youth camps are offered throughout the summer months, welcoming locals and visitors alike. Our professional and friendly staff is available to arrange your next game, find you a perfect hitting partner, or answer any racket, stringing or tennis/pickleball gear questions that you may have. We look forward to hitting the courts with you this season!

Opening Date: Monday, May 9 (weather dependent)

Season-Long Tennis & Pickleball Membership Passes

Season-long Tennis and Pickleball Membership Passes are available. Special tennis rates are available for Juniors (ages 13-17), Adults (18-59), Adult Couples, Seniors (60-79), Senior Couples (both partners must be 60-79), and Families. Players ages 80+ are free.

Afternoon Tennis Membership Passes are limited to play Monday- Saturday after 12pm and Sundays for play anytime. Membership passes are available for purchase at the Tennis & Pickleball Center or Recreation Center. Call the Pro Shop at 775.832.1235 or visit InclineTennis.com for more information (before May 9, please call the Recreation Center at 775.832.1310).

SPRING OFFERINGS

Court Reservations:

Call 775.832.1235 or stop by the Tennis & Pickleball Center to reserve your time.

Private & Group Lessons

Private, semi-private, group and clinic lessons are available seven days a week. All adult teaching professions are USPTA certified. Please call the Pro Shop at 775.832.1235 for appointments, pricing, and information.

Daily Adult Tennis Clinics

Develop your game with our Pros.

Beginner Pickleball Clinic

Learn this fast-growing sport.

Adult Pick-Up Pickleball Play

Games for social & competitive players.

The Tennis & Pickleball Center also offers additional clinics as we move into summer. Please check our website InclineTennis.com for more information.

YOUTH TENNIS & PICKLEBALL PROGRAMS

Please check our website at InclineTennis.com for more details as they become available.

Ice Cream Social (Free)

Come out to the Tennis & Pickleball Center, enjoy some ice cream, and learn about our youth programs happening this summer! Please bring a facemask and follow social distancing protocols.

Junior Afternoon Tennis Clinics

A perfect opportunity to develop the aspiring tennis player! Check our website for session dates. Enrollment is available in monthly sessions.

Mini-Munchkins

Ages: 4 - 6 years

Munchkins

Ages: 6 - 7 years



Tennis & Pickleball Center



PICKLEBALL FACTS & MYTHS

By Beverly Keil, Incline Pickleball Newsletter Author

Pickleball is contagious, but in a good way. Have you tried it yet? If not, what are you waiting for?

“Introduction to Pickleball” clinics will be offered at the Incline Village Tennis & Pickleball Center all spring/summer/fall. But in the meantime, here are some myths and facts about the great game with the silly name:

Pickleball is a sport for people who are too old, or too slow to play tennis.

FALSE: The #1 ranked male player in the world is age 22, and the top female player is a teenager. Pickleball is not “tennis light.” Both sports are played on a court with a net. But pickleball uses a paddle, not a racket. The paddle has a short handle, and a solid surface. The ball is hard, with holes in it. The serve is underhanded. The pickleball court is small and the game is fast.

If you are good at tennis, you will be good at pickleball.

Not Necessarily: Fitness and coordination are assets in both sports. But that long backswing from tennis, and the popular lob shot don’t work well in pickleball. And the overhead power serve that wins points in tennis is illegal in pickleball. Tennis players can become good pickleball players, but they have to work at it.

Pickleball players just want to have fun.

Almost TRUE: Pickleball players do have fun. There is plenty of laughter on the courts. But pickleball isn’t just fun. It’s also great exercise. Playing improves your hand-eye coordination, and trains you to use your core muscles for balance.

Pickleball is a place to meet people.

TRUE: You can show up by yourself during drop-in hours and know you will rotate into different games with different partners against different opponents. It’s the ultimate mixer. Everyone is welcome, every time. Pickleball players genuinely like each other and enjoy the social aspects of the game as well as the physical competition.

Pickleball is co-ed. That makes it less competitive.

FALSE: Pickleball is one of just a few sports that men and women can play equally well because success isn’t about raw strength. It’s about reflexes, ball placement, and concentration. The court is small, and the action is fast. Men and women enjoy partnering with each other, competing against one another, and working out together.

Pickleball is a passing fad.

UNLIKELY: Pickleball has been around for over 50 years and has exploded in popularity during the last 10 years among all age groups. It’s a sport you can play for life. It’s inexpensive, requiring only a paddle and shoes. There are many competitive regional and national tournaments. And there is talk of pickleball becoming an Olympic sport. Many communities have built pickleball courts within the last 10 years or have repurposed underutilized tennis courts to meet the demand for pickleball venues. Incline Village initially created two pickleball courts and soon expanded to 12 courts.

If you would like to get involved in this great sport, contact the Tennis and Pickleball Center when we open in May for your “Introduction to Pickleball” lesson.

To receive periodic news about Incline Pickleball schedules and special events, sign up for our email news blasts by sending an email to inclinepickleball@gmail.com.



INCLINE VILLAGE GOLF

The return of spring brings us closer to the start of the 2022 golf season, and our golf maintenance and operations teams are extremely busy preparing for another fun summer on the Incline Village golf courses.

If you're looking to do some pre-season practice on your swing, I encourage everyone to try out our indoor golf simulator while it's still up in the Championship Golf Course Golf Shop, or to head out to the Driving Range once it opens for the season.

The golf staff under the direction of Senior Head Professional Kyle Thornburg are busy scheduling out the upcoming golf season with weekly events, clinics and some outside tournaments. Geneveive is busy ordering new and exciting products for the upcoming season as well as clearing out some older products. Come by the Golf Shop soon before all the sizes are gone! We are also restructuring the golf staff at the Mountain and Championship courses to help provide a better overall experience at both facilities.

This winter has also brought great news in the form of some recognition for the Championship Course. To summarize, the GolfPass Golfers Choice awards came out and the Championship Course won awards for #17 ranked course overall (out of 3,000+ public golf courses across the country), as well as #2 for course conditions and #3 for course layout nationwide. We were also ranked #3 overall in the state of Nevada! This is truly a testament to not only Jeff Clouthier and his staff, but to Kyle Thornburg and the entire golf staff,

as well as Chef Bill Vandenburg and his staff. The overall ranking comes from the following: Value, Conditions, Layout, Pace of Play, Staff Friendliness/Knowledge and Off-Course Amenities. As you can see by the criteria, it takes a total team effort for just one round of golf. Congratulations to everyone who makes the Championship course a special venue!

Lastly, some exciting things to be on the lookout for the upcoming golf season are:

- New golf carts
- All the new ladies red tees fully completed
- New Ladies Course ratings at Championship and Mountain courses
- Return to full service at both courses
- No restrictions for cart riders

Have a great spring and we look forward to seeing you back in Incline Village once the golf courses reopen!



Darren Howard
Darren Howard,
Director of Golf/Community Services

Check out our *NEW* expanded showroom in the Village Center!

HunterDouglas Gallery

PIROUETTE WINDOWSHADINGS

Call for a **FREE** in home consultation!

(775) 831 -2204

www.sierraverdegroupp.com

LOWER VILLAGE CENTER

797 Southwood Blvd.
Incline Village, NV

Home Design Center

IN CONCERT
SMOKEY
MUSIC & MEMORIES



FRIDAY, MAY 27 | 8 PM

Purchase tickets at the Atlantis Gift Shop
or online at atlantiscasino.com/smokey

Atlantis
CASINO RESORT SPA • RENO

atlantiscasino.com



CHAMPIONSHIP COURSE RECOGNIZED BY GOLFPASS VOTERS

The Incline Village Championship Golf Course recently received four prestigious rankings on the GolfPass “Golfers’ Choice 2022” lists. With over 320,000 golfers submitting feedback on their favorite courses around the United States,



ORLANDO
ENTERPRISES TAHOE, INC.
(775) 831-5567
(530) 546-5567
Building Quality Homes Since 1978
-Design Build-
-Competitive Pricing-
NV Lic # 0019856 - CA Lic # 876583
www.orlandoenterprises.com



the Incline Village Championship Course was ranked #17 in the overall “Top 50 U.S. Courses” list, #2 in the overall “Top 25 Courses for Best Conditions” list, #3 in the overall “Top 25 Golf Course Layouts” list, and #3 in the “Best Golf Courses in Nevada” list.

“What an honor it is to be included as one of the top 50 U.S. courses, and to be the top-ranked Lake Tahoe golf course on this list,” said Darren Howard, Director of Golf and Community Services for the Incline Village Championship Course. “I have played several of the top 50 courses and we are extremely excited to be included with these great courses. To finish 17th overall, 2nd in course conditions, and 3rd in top layouts is very rare and just proves that we have an incredible team here at the Incline Village Golf Courses that provide an incredible golf experience daily.”

The GolfPass Golfers’ Choice awards are based on real user reviews from golfers all over the world. To be eligible, golf courses were required to be publicly-accessible (including resort and semi-private courses), and to have more than 10 reviews submitted in 2021.

Amisk8er, a golfer on GolfPass, summed it up with their review about the Incline Village Championship Golf Course when they said, "I love playing golf in Tahoe, but this was the first time I got to play Incline, and I wasn't disappointed. Everything about this course from start to finish is top notch and worth the money. Upon first glance, it appears to be like any other tree-lined mountainous course, however as you play through you begin to feel the difference. Each hole has something to it, and once you're done you feel like you've been on a real adventure."

The Incline Village Championship Course is a high-elevation course, located in Incline Village, Nevada, a half mile from the shore of Lake Tahoe and featuring elevations from 6,300 to 6,500 feet (1,920 – 1,981 meters).

Jeff Clouthier, Grounds Superintendent at the Incline Village Golf Courses said, “It is very impressive and a testament to our team to be ranked #2 in course conditions, especially for a high-elevation golf course. Being in the mountains, the courses need to be able to withstand harsh winter conditions and bounce back from damage done from ice, snow and mold. Our team takes pride in maintaining these courses to offer the best conditions throughout the entire golf season.”

Read more about the Golfers’ Choice awards, leave a review or search for other great courses on GolfPass.com.



NEW LADIES COURSE RATINGS AT CHAMPIONSHIP & MOUNTAIN GOLF COURSE

The ladies tees at both the Mountain and Championship golf courses were re-rated late last fall and the course rating for ladies went up across the board. What does that mean?

Well, you will see your handicap index increase as well as your overall course handicap if you continue shooting the same scores as you previously did.

For example, previously the ladies red tees at the Championship Course had a course rating of 63.2 and a slope of 114, compared to the new course rating of 64.6 and slope of 130. The slope rating increased significantly, which will mean you will see a higher course handicap than you usually have.

All of the increases in course rating and slope are directly related to the amount of forced carries on the golf courses. These factors were not taken into account when the original ratings were done.

Golfers are always talking about handicaps and what they think they are, but most people are incorrect in their assumptions. Please read below on how handicaps work and how often you should actually shoot your handicap, I think most of you will be surprised.

According to the United States Golf Association (USGA): The purpose of the World Handicap System™ is to provide greater enjoyment for all who play the game by enabling players of any ability, from anywhere in the world, to play and compete with others on a fair basis.

HANDICAPS & HOW THEY WORK

What is a Handicap Index?

A Handicap Index provides you with a portable measure of your playing ability that's consistent with how golfers are measured worldwide. It can be used to track your progress and play a casual or competitive round with any other player. All players are encouraged to establish and maintain a Handicap Index.

How do I get one?

It's easy! Get in touch with any of the Golf Pros at the Incline Village Golf Courses and we can get you registered for a Handicap Index - all you have to do is go play golf and record your scores when you do. Scores from match play, stroke play, and team formats where you play your own ball are acceptable - as long as you play by the Rules of Golf and another person is present during your round.

Your Handicap Index is not your Course Handicap

Once you decide which tees you're going to play, it's time to convert your Handicap Index into a Course Handicap, which is the number of strokes you need to play to par. There are lots of great mobile apps out there which can do this conversion for you, or if you like to do a little math, the formula is: $\text{Course Handicap} = \text{Handicap Index} \times (\text{Slope Rating} / 113) + (\text{Course Rating} - \text{par})$

ASK A PRO with Darren Howard

Q: How often should you beat your handicap?

A: You should average about three shots higher than your handicap. For example, a player with a Course Handicap of 16 on a course with a USGA Course Rating of 71.2 should average about 90, not 87.

The USGA Handicap System is based on 96 percent of the best 10 differentials (corrected for Course and Slope Rating) of his/her last 20 rounds. More than half of your scores should be within three strokes of your handicap (87 to 93 in our example). Most golfers will beat their handicap (87 or better in our example) 20 percent of the time, and beat it by three strokes one out of every 20 rounds.

For this player to break 80 (beat his handicap by eight), the odds are 1,138 to 1 if his/her handicap is correct. Do that twice and it would take the average golfer over 700 years of golf to accomplish it "fairly." In other words, odds far beyond reasonableness. Bottom line - a proper handicap is your potential, not what your score should be each time you play.

PUBLIC WORKS UPDATE

Burnt Cedar Swimming Pool Improvements— Project # 3970BD2601

This project is a 2021 Capital Improvement and Board of Trustees Priority Project, which consists of reconstructing the two (2) existing pools (full size and toddler) that were built in 1968 at Burnt Cedar Beach. Designs of the pools were completed in early 2021. The design partners include TSK Architects, Aquatics Design Group, RCI, Inc., Design Workshop, Nelson-Wilcox Structural Engineers and MSA, Inc.

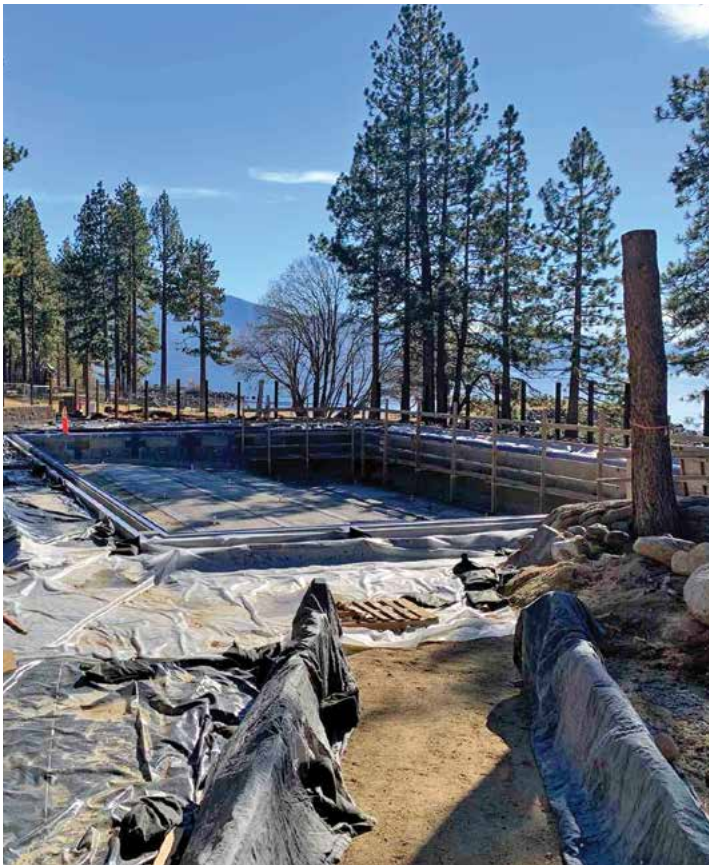
CORE West, Inc. was selected as the Construction Manager at Risk (CMAR) and started construction May 3, 2021. Construction proceeded at a quick pace from May through November. CORE secured the site for winter and only limited work continued within the mechanical room. CORE returned to the site in March to resume construction again. Planned activities include completion of the CMU walls, tuning up the pool deck subgrade, installing rebar, installing pool embed anchors, pouring the concrete deck, fencing, landscaping, and plastering the pool. As long as Mother Nature cooperates, the pool is set to open in early June.

The new full size pool will be wider, to accommodate an additional 6th swim lane. The orientation of the pool has been modified to showcase the site’s incredible Tahoe views. Kids are sure to spend hours enjoying the pool slide, and the updated toddler pool will be very popular with its new fun water feature. The renovations will provide a modern, quality facility for Incline Village that will also include a raised terrace for dining and a new pedestrian path connecting the west parking area to the sandy beach and picnic areas. We are excited for residents to come enjoy this upgraded facility in 2022.

IVGID Community Dog Park – Project # 4378LI2104

The Community Dog Park has been identified as a Board of Trustees Priority Project. Staff has submitted a Special Use Permit Application with the US Forest Service to utilize the 13-acre lot directly east of Incline High School. The use of the land would include parking, restroom facilities, large and small fenced dog park areas, and walking trails.

We are waiting patiently for the application to work its way through the Forest Service permitting process. Soon an advisory committee will be selected to determine the overall vision as well as prepare to evaluate other site opportunities in case the special use permit is not granted by the Forest Service.



- PAVING & PATCHING
- SEALCOATING
- CRACK SEALING
- STRIPING
- SIGNAGE
- COMMERCIAL & RESIDENTIAL

**Full Service Parking Lot &
Driveway Specialists**

FREE Estimates!



LAKESIDE
Paving & Sealing, Inc.
530.583.3600
LakesidePaving.com



Tahoe City, CA



CA Lic. #829462
NV Lic. #69490



WHAT ARE NEVADA SOVEREIGN LANDS?

by Grahame Ross, IT/GIS Supervisor for the Nevada Division of State Lands

The Nevada Division of State Lands manages three types of state-owned land:

1. Agency lands - Lands owned and managed by the State Land Office or Nevada Tahoe Resource Team,
2. Sovereign Lands - The bed and banks of those water bodies determined to be navigable at statehood, and
3. School Trust Lands - Schools managed to benefit the Nevada Permanent School Fund.

Today, we are going to focus on Sovereign Lands.

Upon statehood in 1864, title to the bed and banks of navigable water bodies passed from the federal government to the new state. Of all the bodies of water in Nevada, eight were determined to have been used for commerce and viewed as navigable upon statehood. These are: Lake Tahoe, the Truckee River, the Carson River, the Colorado River, Walker Lake, Washoe Lake, Winnemucca Lake, and the Virgin River.

Approximately one third of the surface area of Lake Tahoe is within the State of Nevada. The Lake is currently managed as a water storage reservoir, with the upper six feet of capacity (to elevation 6,229.1) utilized by downstream users for their water needs. Defined by an Attorney General’s opinion (1976-204) the extent of state jurisdiction extends to the ordinary high water mark as it existed at statehood, that being elevation 6,223 feet above sea level, Lake Tahoe Datum. Today, this elevation is commonly referred to as the low water line or “natural rim.”

In addition to authorizing activities on state land, NDSL is also responsible for permitting any structures lying between elevation 6,223 and 6,229.1. While this area of the managed lake bed is not in state ownership, because the water surface can reach up to elevation 6,229.1, the state has authority to issue permits for purposes of protecting the navigability of the Lake.



Left to Right: Melissa Goodman, CSR; Tracie Chambers, CSR; Heather Shook, CSR; Larry Peyton, Agent; Michael Peyton, Agent; Stephanie Howat, CSR; Sarah Shulman, CSR / Office Manager; Tracy Peters, Administrative Assistant

PEYTON INSURANCE AGENCY LLC

775.831.6233 | mpeyton@farmersagent.com

770 Northwood Boulevard #10

Incline Village, NV 89451

<https://agents.farmers.com/nv/incline-village/michael-peyton>

Auto | Home | Commercial | Workers’ Comp
Life & Health | Bonds | & Much More!

NV LIC #935773 | CA LIC #0D72961





MARIA WILLIAMS
 SCADA/Electrician/
 Instrumentation, Public Works

I'm excited about joining the IVGID Public Works team and look forward to meeting everyone in the District. A little bit about my background: I completed an electrical and instrumentation program about six years ago. I was hired by FedEx as their electrician and worked

there for a year. I wanted to challenge myself and do industrial electrical work, so I applied at a gold mine in Round Mountain, Nevada and got the job.

It was a wonderful experience, but it was too far from home; so after spending some time there, I moved and accepted a job at a Diatomaceous Earth (DE) plant in Lovelock, Nevada, working as their electrical instrumentation and controls technician. I worked on all their control systems and helped commission their new process plant in Sparks, Nevada.

After that, and prior to coming to IVGID, I worked for Enel Green Power, then Fulcrum Bioenergy. The process at Fulcrum was complex but very fascinating - they are turning trash into fuel.

Here at IVGID, I've been hired as a SCADA Technician (SCADA stands

for Supervisory Control and Data Acquisition), and I am looking forward to all of the projects ahead of me. Aside from work, I am a wife and mother of four - two boys and two girls. As a family, we love all things nature related including snowboarding, fishing, riding our RZR, and exploring. My husband and I have multiple hobbies including flipping and selling houses. We also have our own clothing line called Blue Collar Threads; I love supporting and empowering our blue collar group on my LinkedIn as an influencer. Balancing work and motherhood can be overwhelming, so I like to share my experience on that platform.

ADVANCED & *Compassionate*
CANCER CARE

Leading the Way in Rural Cancer Treatment

Our goal is to provide the best rural cancer treatment in the country, and to do it in the most honest, supportive and compassionate way we know how.

- Highly-Skilled Care
- Advanced Technology and Treatments
- Extensive Support Programs

Offering Varian TrueBeam® Radiation Therapy



GENE UPSHAW
 MEMORIAL
 TAHOE FOREST
 CANCER CENTER

10121 Pine Avenue
 Truckee, CA
 (530) 582-6450
tahocancercenter.com



NINE 47 TAHOE



REFINED LUXURY *meets* ENDLESS ADVENTURE



Lake Tahoe's newest luxury development

Introducing Nine 47 Tahoe, 40 mountain modern luxury condominiums located in Incline Village, with direct access to unparalleled year-round adventure in tax-friendly Nevada.

STACEY HANNA | 775 690 7078

NINE47TAHOE.COM

EXCLUSIVELY BROUGHT TO YOU BY CHASE INTERNATIONAL NV BS.145845



THE ROBERT & ROBIN HOLMAN FAMILY BIKE PARK

980 Incline Way
Incline Village, NV 89451
inclinerecreation.com

The Incline Village Parks & Recreation, the Incline Tahoe Foundation, and Incline Bike Project collaborated to develop and maintain the Robert & Robin Holman Family Community Bike Park. This park offers a pump track, beginner and intermediate flow lines, and was funded through generous donations by community members and in large part by a grant from the Holman Family Philanthropies Fund held at Parasol Tahoe Community Foundation.

The Incline Bike Park Project's mission is to provide a free-to-use bike park facility that welcomes all ages and skill levels to a safe, outdoor, healthy, family friendly community-gathering venue.

For information on Phase 2, check out www.facebook.com/InclineBikeProject/

EXPERIENCE YOUR TRUE TAHOE WITH A JOB IN INCLINE VILLAGE

Great Locations & Perks

Perks may include free or discounted access to our venues, plus discounts on food & beverage.

Parks & Recreation job opportunities:

- Lifeguard & Lead Lifeguard
- Swim Instructor & Swim Team Coach
- Parks Maintenance Staff
- Beach Hosts & Lead Beach Hosts
- Tennis Hosts
- Tennis/Pickleball Pros
- Fitness Facility Rover
- Child Care/Sr. Child Care Leader
- Asst. Parks & Recreation Clerk

Food & Beverage job opportunities:

- Dishwashers
- Prep Cooks & Cooks
- Snack Bar Attendants
- Servers

Golf Courses job opportunities:

- Golf Shop Staff
- Outside Services Staff
- Starter/Rangers
- Grounds Maintenance Staff

View the full list of available positions online at yourtahoepace.com/jobs. The Incline Village General Improvement District is an equal opportunity employer.



Photo by Chris Talbot

FITNESS TRAIL

The Incline Village Fitness Trail (previously known as the Exercourse) is an 18-station exercise course adjacent to the Village Green. The .8 mile course winds through the forest next to Incline Creek. The course contains accessible walking, running, snowshoeing, biking and exercise trails, and is used by many residents and visitors year-round. The Fitness Trail was updated in partnership with the Incline Tahoe Foundation and community funds.



DISC GOLF COURSE

The North Tahoe Lions Club Disc Golf Course includes 18 par 3 holes in a picturesque setting located within Incline Park adjacent to the Tennis Center, Recreation Center, Skateboard Park and the Ball Fields. This is a free multi-use area to be enjoyed by all ages. The Disc Golf Course was created through a partnership between the Incline Village Parks & Recreation Department and the Incline Tahoe Foundation with generous community donations. Parking is available at the Recreation Center at 980 Incline Way. Parking is not permitted at the Tennis Center. The 1st hole is located on the west side of the Recreation Center entrance road. Discs are available for purchase or rent at the Recreation Center.



SKATE PARK

Hwy 28 & Southwood Blvd., Incline Village, NV 89451
inclinerecreation.com

Incline Skate Park, centrally located on the corner of Tahoe Blvd (Hwy 28) and Southwood Blvd. in Incline Park, has something to offer everyone. There is an intermediate/advanced section of the park consisting of two 5-foot side-by-side bowls connected with a spine. In the middle of the park is a 3-foot tall fun box, and the entire right side of the small end is a 2.5-foot tall bowl for beginners. The street course is laid out on top, flowing in a circle with an 8-foot long flat rail, 6-foot long down rail, a set of 4 stairs, and a 10-foot long downward ramp leading into the bowls.



Tim Callicrate
Chairman

PO Box 5663
Incline Village, Nevada
89450

775.336.9925
callicrate_trustee@ivgid.org

Term expires 2022



Matthew Dent
Vice Chairman

774 Mays Blvd. #10-573
Incline Village, Nevada
89451

775.298.1005
dent_trustee@ivgid.org

Term expires 2024



Michaela Tonking
Treasurer

546 Lantern Ct.
Incline Village, Nevada
89451

775.225.0748
tonking_trustee@ivgid.org

Term expires 2024



Sara Schmitz
Secretary

932 Lakeshore Blvd.
Incline Village, Nevada
89451

925.858.4384
schmitz_trustee@ivgid.org

Term expires 2024



Kendra Wong
Trustee

774 Mays Blvd. #10-294
Incline Village, Nevada
89451

916.251.9664
wong_trustee@ivgid.org

Term expires 2022

ADVERTORIAL

In today's world, there is an increasing need for mental health care. All you have to do is look around to see many people struggling from loneliness, isolation, anger, and depression. When emotional and social problems are tackled early on in life, it is easier for an individual to have a healthy relationship with one's self and others throughout the rest of their life.

At LEAD with horses, they prepare young children to become healthy adults who know how to regulate their emotions and have strong relationships through equine assisted education and counseling. They use a unique combination of mental health professionals, equine therapists, and horses to create an approach that is effective and powerful in helping children.

One such child is a 10 year boy that recently participated in a group

program. When this boy arrived at LEAD with Horses, he was reserved and shy. He was in foster care and in need of confidence and trust in himself and others. He was fearful about being around the horses, lacked confidence in the arena, and asked for one of the team members to be with him at nearly all times.

Walter the donkey came straight up to the child in the first session and nudged his head into his chest. The boy laughed, calmed down and instantly bonded with Walter. The next couple of weeks deepened their friendship and helped the child gain the courage and confidence to work with a horse. He acknowledged feeling nervous, but asked another child to work with him.

Through this process he learned to identify emotions and voice his need for help. Every time he moved into the arena and began working with the animals, his demeanor softened, and he allowed himself to act like a kid, something that did

not come naturally outside of the arena. He laughed, played, and also made space for his fear, self-doubt, and enormous amount of love in his heart.

Toward the end of his sessions he was asked, "When do you feel the happiest?" he responded, "When I'm here at horse camp".

LEAD with horses is a non-profit organization, and depends on donations from generous people. There are many ways to help, including monetary donations, supplies, and volunteer time. With help from donors, the program can continue to assist many children in our community.

LIST OF NEEDS:

Horse Care

- Grass pellets
- Manure cart
- Barn vacuum

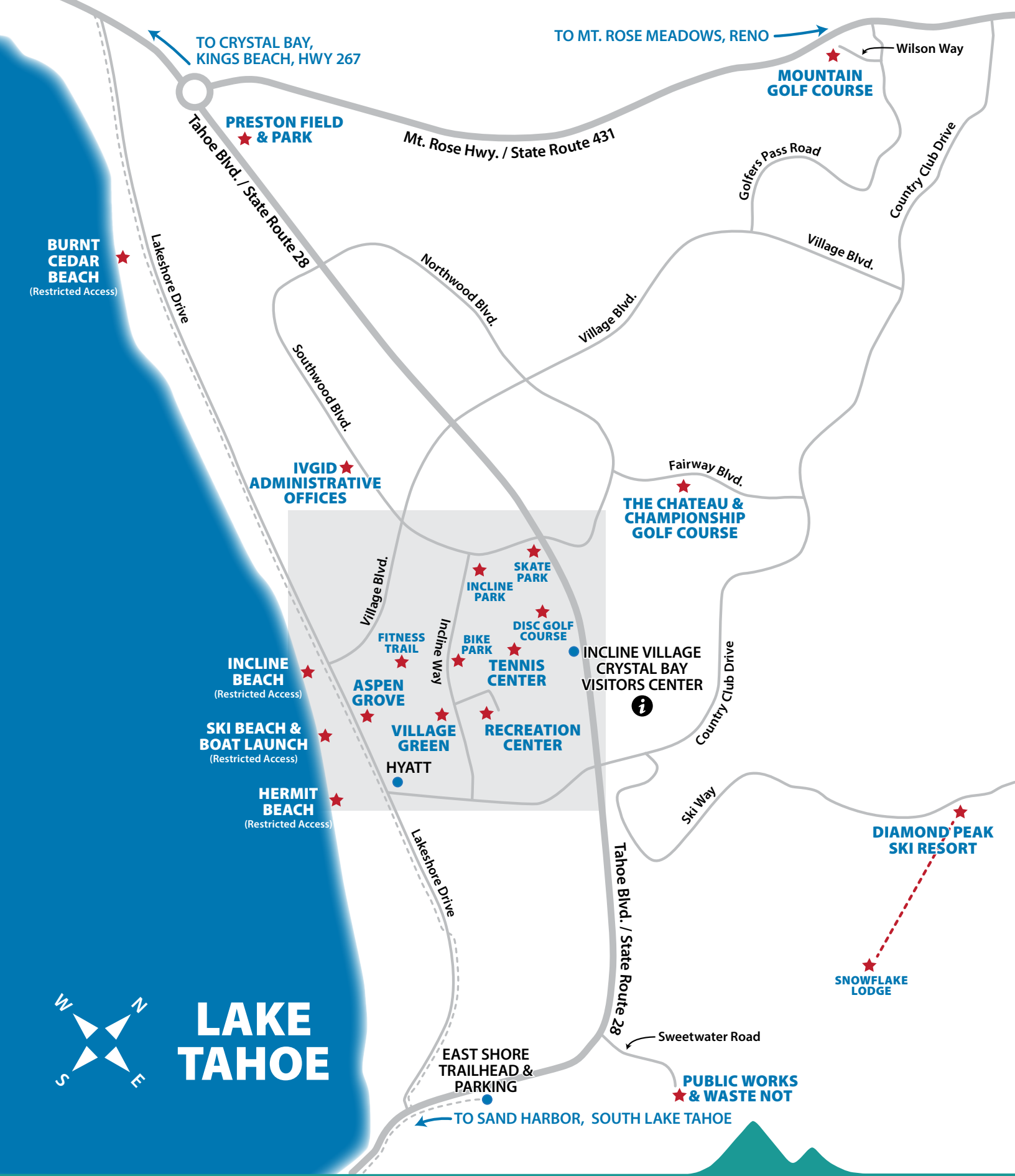
Office/Classroom

- Office Chair
- Printer paper
- Computer
- Drawing paper



leadwithhorses.org | 775.223.5181

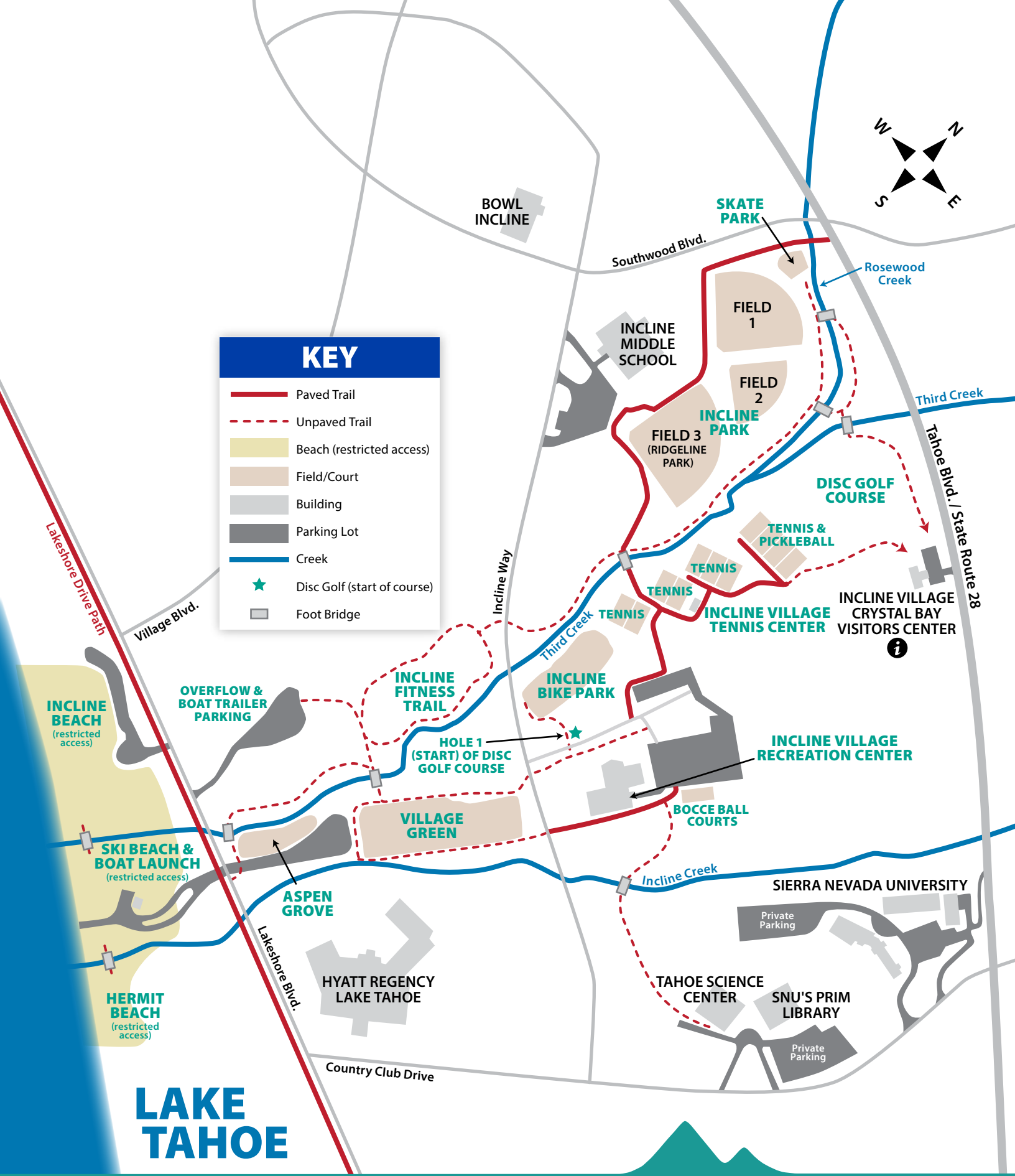




LAKE TAHOE

Access to IVGID Beaches (Ski Beach, Incline Beach, Hermit Beach and Burnt Cedar) is restricted to IVGID Picture Pass and Recreation Punch Card holders with beach access.

LEARN MORE ABOUT IVGID PASSES AT INCLINERECREATION.COM



LAKE TAHOE

Access to IVGID Beaches (Ski Beach, Incline Beach, Hermit Beach and Burnt Cedar) is restricted to IVGID Picture Pass and Recreation Punch Card holders with beach access.

LEARN MORE ABOUT IVGID PASSES AT INCLINERECREATION.COM

YOUR GUIDES TO TAHOE REAL ESTATE



**STACEY
HANNA**

775.690.7078
NV BS.0145845
CA 01991991



**SUZIE
MCSHERRY**

775.413.3106
NV S.0190396



**JANE
RUBSAMEN**

775.843.0312
NV S.0066076



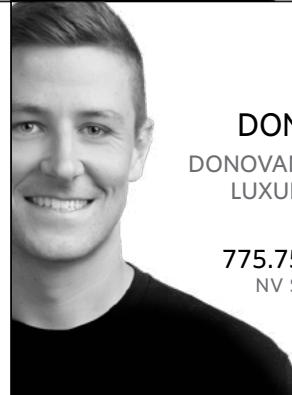
**KERRY
DONOVAN**
DONOVAN GROUP
LUXURY TEAM

775.750.2190
NV BS.0052696



**MEGAN
PARR WARREN**
DONOVAN GROUP
LUXURY TEAM

775.303.2672
NV BS.0143530



**KEVIN
DONOVAN**
DONOVAN GROUP
LUXURY TEAM

775.750.7339
NV S.0194609



**GABRIELA
MCKNEELY**
MCKNEELY
PINNACLE GROUP

775.636.3361
NV BS.0146156



**DAVE
MCKNEELY**
MCKNEELY
PINNACLE GROUP

650.219.6481
NV BS.0146231



**JENNIFER
BULLARD**

530.545.2187
NV S.0062427
CA 01440019

TAKE YOUR CAREER TO THE NEXT LEVEL,
CALL ELIZABETH QUINN
AND KRISTINA MATTSON
775 232 4530 | 530 613 5207

CHASE
INTERNATIONAL
LUXURY LEADER



**INCLINE
VILLAGE**

GENERAL IMPROVEMENT DISTRICT
893 Southwood Blvd.
Incline Village, NV 89451

*We've got a leg up
on orthopedic
technology.*

Introducing **VELYS™**
**Robotic-Assisted
Knee Replacement**

**Now available locally at
Tahoe Forest Hospital.**

TFHD.com/orthopedics | (530) 451-0615



**TAHOE FOREST
ORTHOPEDICS &
SPORTS MEDICINE**



VELYS™

Robotic-Assisted Solution